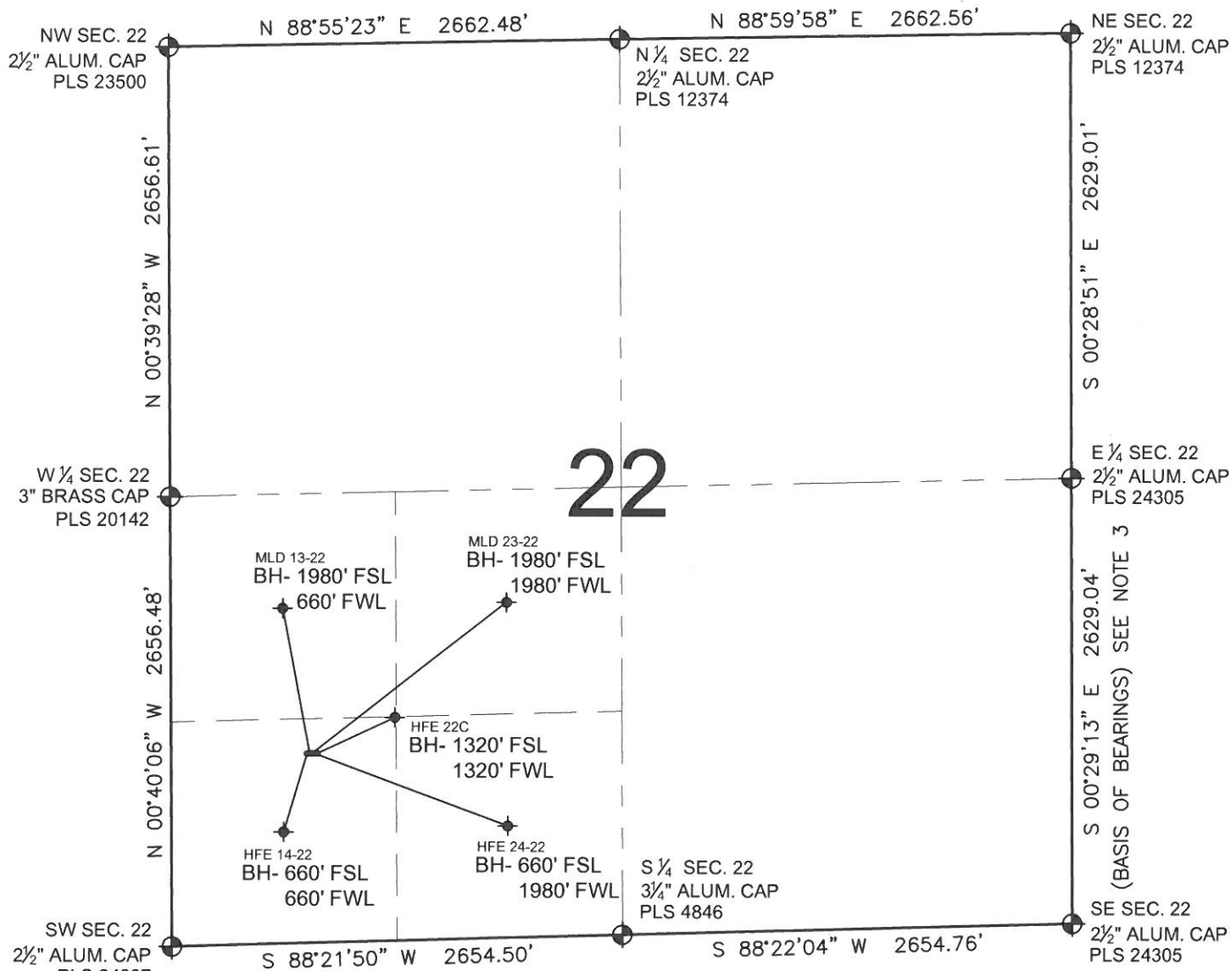


PAD DRAWING: HFE 5 PAD

SECTION 22, TOWNSHIP 4 NORTH, RANGE 68 WEST, 6TH P.M.



LEGEND

- = EXISTING MONUMENT
- ◆ = BOTTOM HOLE
- BH= BOTTOM HOLE
- = PROPOSED WELL
- ◆ = EXISTING WELL

NOTES:

- THIS FIELD SURVEY CONFORMS TO THE MINIMUM STANDARDS SET BY THE C.O.G.C.C., RULE NO. 215
- HORIZONTAL POSITIONS AND ORTHOMETRIC ELEVATIONS SHOWN AT THE WELL HEAD, ARE BASED ON GPS-RTK POSITIONS DERIVED FROM MINIMUM 2-HOUR STATIC OBSERVATIONS CORRECTED BY THE NATIONAL GEODETIC SURVEY ONLINE POSITIONING USER SERVICE, O.P.U.S. DATUM: HORIZONTAL = NAD83/2007, VERTICAL = NAVD88
- THE BASIS OF BEARINGS ARE STATE PLANE COORDINATE SYSTEM GRID BEARINGS SHOWN HEREON BETWEEN THE DESCRIBED THE MONUMENTS SHOWN HEREON.
- GRID DISTANCES ARE SHOWN, AS MEASURED IN THE FIELD, WITH TIES TO WELLS MEASURED PERPENDICULAR TO SECTION LINES.

NOTES:

HFE 14-22 TO BE AT 1120' FSL, 800' FWL.
BOTTOM HOLE AT 660' FSL & 660' FWL.
MLD 13-22 TO BE AT 1120' FSL, 815' FWL.
BOTTOM HOLE AT 1980' FSL & 660' FWL.
MLD 23-22 TO BE AT 1120' FSL, 830' FWL.
BOTTOM HOLE AT 1980' FSL & 1980' FWL.
HFE 24-22 TO BE AT 1120' FSL, 845' FWL.
BOTTOM HOLE AT 660' FSL & 1980' FWL.
HFE 22C TO BE AT 1120' FSL, 860' FWL.
BOTTOM HOLE AT 1320' FSL & 1320' FWL.

PREPARED BY:

PFS

Petroleum Field Services, LLC
1801 W. 13th Ave.
Denver, CO 80204

SUNDANCE ENERGY

FIELD DATE:
03-28-12

PAD NAME:
HFE 5 PAD

DRAWING DATE:
03-29-12

SURFACE LOCATION:

WELD COUNTY, COLORADO

BY:
TRW

SW 1/4 SW 1/4, SEC. 22, T4N, R68W, 6TH P.M.



0 500 1000

SCALE: 1"=1000'