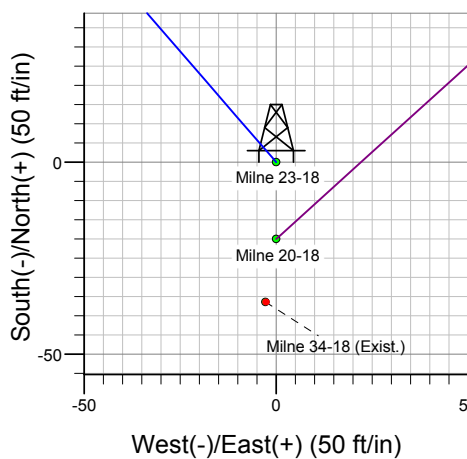
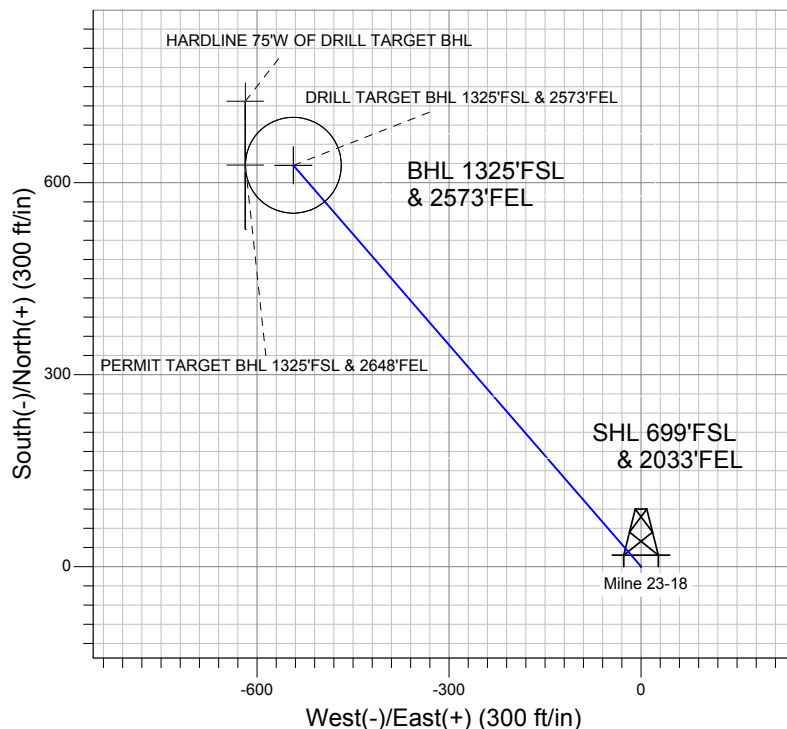
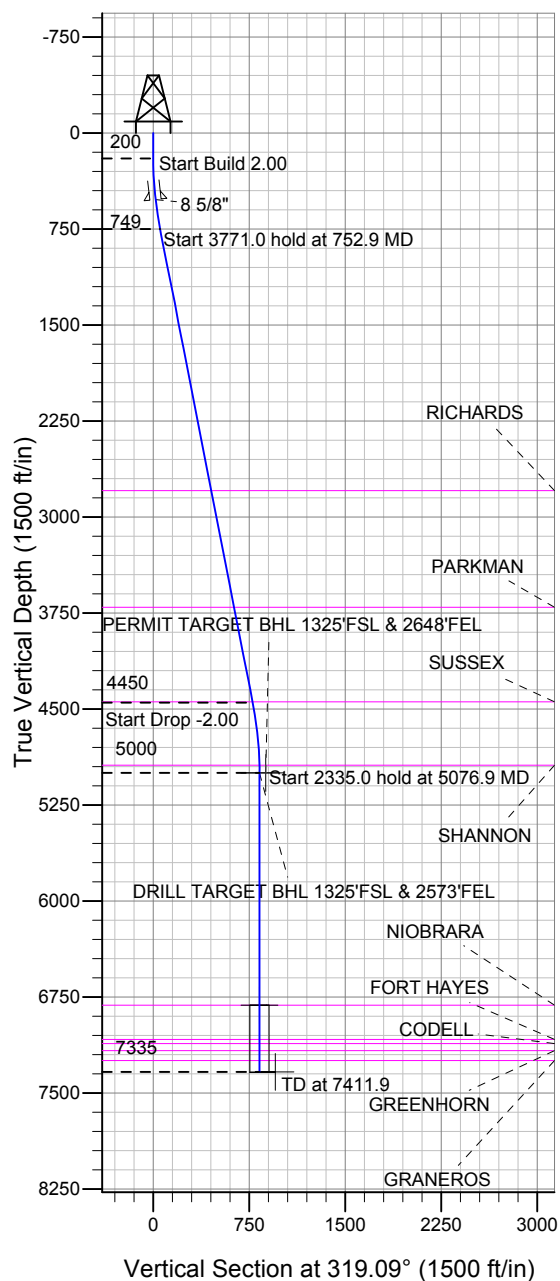


### Well Name: Milne 23-18

Surface Location: Milne 23-18 Pad Sec.18-T6N-R65W  
North American Datum 1983, US State Plane 1983Colorado Northern Zone  
Ground Elevation: 4755.0

+N/-S	+E/-W	Northing	Easting	Latitude	Longitude	Slot
0.0	0.0	1419759.05	3221379.24	40.482913	-104.704147	
		Original Well Elev	WELL @ 4767.0ft (Original Well Elev)			

## BAYSWATER EXPLORATION & PRODUCTION



Milne 23-18 Pad Sec.18-T6N-R65W  
Milne 23-18  
Plan #1 (3-5-12)  
13:03, March 08 2012



Azimuths to True North  
Magnetic North: 8.74°  
Magnetic Field  
Strength: 53105.7snT  
Dip Angle: 67.10°  
Date: 3/5/2012  
Model: IGRF2010

### WELLBORE TARGET DETAILS (LAT/LONG)

Name	TVD	+N/-S	+E/-W	Latitude	Longitude	Shape
DRILL TARGET BHL 1325'FSL & 2573'FEL	5000.0	627.0	-543.4	40.484634	-104.706100	Point
PERMIT TARGET BHL 1325'FSL & 2648'FEL	5000.0	627.0	-618.4	40.484634	-104.706370	Point
TARGET CIRCLE 1325'FSL & 2573'FEL	6815.0	627.0	-543.4	40.484634	-104.706100	Circle (Radius: 75.0)
HARDLINE 75°W OF DRILL TARGET BHL	7335.0	727.0	618.4	40.484908	-104.706370	Polygon

### SECTION DETAILS

Sec	MD	Inc	Azi	TVD	+N/-S	+E/-W	DLeg	TFace	VSec	Target
1	0.0	0.00	0.00	0.0	0.0	0.0	0.00	0.00	0.0	
2	200.0	0.00	0.00	200.0	0.0	0.0	0.00	0.00	0.0	
3	752.9	11.06	319.09	749.5	40.2	-34.8	2.00	319.09	53.2	
4	4524.0	11.06	319.09	4450.5	586.8	-508.6	0.00	0.00	776.5	
5	5076.9	0.00	0.00	5000.0	627.0	-543.4	2.00	180.00	829.7	DRILL TARGET BHL 1325'FSL & 2573'FEL
6	7411.9	0.00	0.00	7335.0	627.0	-543.4	0.00	0.00	829.7	



# **BAYSWATER EXPLORATION & PRODUCTION**

**SEC.18-T6N-R65W**

**Milne 23-18 Pad Sec.18-T6N-R65W**

**Milne 23-18**

**Wellbore #1**

**Plan: Plan #1 (3-5-12)**

## **Standard Planning Report**

**08 March, 2012**

<b>Database:</b>	Landmark	<b>Local Co-ordinate Reference:</b>	Well Milne 23-18
<b>Company:</b>	BAYSWATER EXPLORATION & PRODUCTION	<b>TVD Reference:</b>	WELL @ 4767.0ft (Original Well Elev)
<b>Project:</b>	SEC.18-T6N-R65W	<b>MD Reference:</b>	WELL @ 4767.0ft (Original Well Elev)
<b>Site:</b>	Milne 23-18 Pad Sec.18-T6N-R65W	<b>North Reference:</b>	True
<b>Well:</b>	Milne 23-18	<b>Survey Calculation Method:</b>	Minimum Curvature
<b>Wellbore:</b>	Wellbore #1		
<b>Design:</b>	Plan #1 (3-5-12)		

<b>Project</b>	SEC.18-T6N-R65W, Weld County, CO		
<b>Map System:</b>	US State Plane 1983	<b>System Datum:</b>	Mean Sea Level
<b>Geo Datum:</b>	North American Datum 1983		Using Well Reference Point
<b>Map Zone:</b>	Colorado Northern Zone		Using geodetic scale factor

<b>Site</b>	Milne 23-18 Pad Sec.18-T6N-R65W		
<b>Site Position:</b>		<b>Northing:</b>	1,419,759.07 ft
<b>From:</b>	Lat/Long	<b>Easting:</b>	3,221,379.24 ft
<b>Position Uncertainty:</b>	0.0 ft	<b>Slot Radius:</b>	"
		<b>Latitude:</b>	40.482913
		<b>Longitude:</b>	-104.704147
		<b>Grid Convergence:</b>	0.51 °

<b>Well</b>	Milne 23-18		
<b>Well Position</b>	<b>+N/-S</b>	0.0 ft	<b>Northing:</b> 1,419,759.05 ft
	<b>+E/-W</b>	0.0 ft	<b>Easting:</b> 3,221,379.24 ft
<b>Position Uncertainty</b>	0.0 ft	<b>Wellhead Elevation:</b>	ft
		<b>Latitude:</b>	40.482913
		<b>Longitude:</b>	-104.704147
		<b>Ground Level:</b>	4,755.0 ft

<b>Wellbore</b>	Wellbore #1				
<b>Magnetics</b>	<b>Model Name</b>	<b>Sample Date</b>	<b>Declination (°)</b>	<b>Dip Angle (°)</b>	<b>Field Strength (nT)</b>
	IGRF2010	3/5/2012	8.74	67.10	53,106

<b>Design</b>	Plan #1 (3-5-12)			
<b>Audit Notes:</b>				
<b>Version:</b>	<b>Phase:</b>	PROTOTYPE	<b>Tie On Depth:</b>	0.0
<b>Vertical Section:</b>	<b>Depth From (TVD) (ft)</b>	<b>+N/-S (ft)</b>	<b>+E/-W (ft)</b>	<b>Direction (°)</b>
	0.0	0.0	0.0	319.09

<b>Plan Sections</b>										
Measured Depth (ft)	Inclination (°)	Azimuth (°)	Vertical Depth (ft)	+N/-S (ft)	+E/-W (ft)	Dogleg Rate (°/100ft)	Build Rate (°/100ft)	Turn Rate (°/100ft)	TFO (°)	Target
0.0	0.00	0.00	0.0	0.0	0.0	0.00	0.00	0.00	0.00	
200.0	0.00	0.00	200.0	0.0	0.0	0.00	0.00	0.00	0.00	
752.9	11.06	319.09	749.5	40.2	-34.8	2.00	2.00	0.00	319.09	
4,523.9	11.06	319.09	4,450.5	586.8	-508.6	0.00	0.00	0.00	0.00	
5,076.9	0.00	0.00	5,000.0	627.0	-543.4	2.00	-2.00	0.00	180.00	DRILL TARGET B-
7,411.9	0.00	0.00	7,335.0	627.0	-543.4	0.00	0.00	0.00	0.00	

<b>Database:</b>	Landmark	<b>Local Co-ordinate Reference:</b>	Well Milne 23-18
<b>Company:</b>	BAYSWATER EXPLORATION & PRODUCTION	<b>TVD Reference:</b>	WELL @ 4767.0ft (Original Well Elev)
<b>Project:</b>	SEC.18-T6N-R65W	<b>MD Reference:</b>	WELL @ 4767.0ft (Original Well Elev)
<b>Site:</b>	Milne 23-18 Pad Sec.18-T6N-R65W	<b>North Reference:</b>	True
<b>Well:</b>	Milne 23-18	<b>Survey Calculation Method:</b>	Minimum Curvature
<b>Wellbore:</b>	Wellbore #1		
<b>Design:</b>	Plan #1 (3-5-12)		

#### Planned Survey

Measured Depth (ft)	Inclination (°)	Azimuth (°)	Vertical Depth (ft)	+N/-S (ft)	+E/-W (ft)	Vertical Section (ft)	Dogleg Rate (°/100ft)	Build Rate (°/100ft)	Turn Rate (°/100ft)
0.0	0.00	0.00	0.0	0.0	0.0	0.0	0.00	0.00	0.00
40.0	0.00	0.00	40.0	0.0	0.0	0.0	0.00	0.00	0.00
80.0	0.00	0.00	80.0	0.0	0.0	0.0	0.00	0.00	0.00
120.0	0.00	0.00	120.0	0.0	0.0	0.0	0.00	0.00	0.00
160.0	0.00	0.00	160.0	0.0	0.0	0.0	0.00	0.00	0.00
200.0	0.00	0.00	200.0	0.0	0.0	0.0	0.00	0.00	0.00
240.0	0.80	319.09	240.0	0.2	-0.2	0.3	2.00	2.00	0.00
280.0	1.60	319.09	280.0	0.8	-0.7	1.1	2.00	2.00	0.00
320.0	2.40	319.09	320.0	1.9	-1.6	2.5	2.00	2.00	0.00
360.0	3.20	319.09	359.9	3.4	-2.9	4.5	2.00	2.00	0.00
400.0	4.00	319.09	399.8	5.3	-4.6	7.0	2.00	2.00	0.00
440.0	4.80	319.09	439.7	7.6	-6.6	10.0	2.00	2.00	0.00
480.0	5.60	319.09	479.6	10.3	-9.0	13.7	2.00	2.00	0.00
520.0	6.40	319.09	519.3	13.5	-11.7	17.9	2.00	2.00	0.00
520.7	6.41	319.09	520.0	13.5	-11.7	17.9	2.00	2.00	0.00
8 5/8"									
560.0	7.20	319.09	559.1	17.1	-14.8	22.6	2.00	2.00	0.00
600.0	8.00	319.09	598.7	21.1	-18.3	27.9	2.00	2.00	0.00
640.0	8.80	319.09	638.3	25.5	-22.1	33.7	2.00	2.00	0.00
680.0	9.60	319.09	677.8	30.3	-26.3	40.1	2.00	2.00	0.00
720.0	10.40	319.09	717.1	35.6	-30.8	47.1	2.00	2.00	0.00
752.9	11.06	319.09	749.5	40.2	-34.8	53.2	2.00	2.00	0.00
760.0	11.06	319.09	756.4	41.2	-35.7	54.6	0.00	0.00	0.00
800.0	11.06	319.09	795.7	47.0	-40.8	62.2	0.00	0.00	0.00
840.0	11.06	319.09	835.0	52.8	-45.8	69.9	0.00	0.00	0.00
880.0	11.06	319.09	874.2	58.6	-50.8	77.6	0.00	0.00	0.00
920.0	11.06	319.09	913.5	64.4	-55.8	85.2	0.00	0.00	0.00
960.0	11.06	319.09	952.7	70.2	-60.9	92.9	0.00	0.00	0.00
1,000.0	11.06	319.09	992.0	76.0	-65.9	100.6	0.00	0.00	0.00
1,040.0	11.06	319.09	1,031.2	81.8	-70.9	108.3	0.00	0.00	0.00
1,080.0	11.06	319.09	1,070.5	87.6	-75.9	115.9	0.00	0.00	0.00
1,120.0	11.06	319.09	1,109.8	93.4	-81.0	123.6	0.00	0.00	0.00
1,160.0	11.06	319.09	1,149.0	99.2	-86.0	131.3	0.00	0.00	0.00
1,200.0	11.06	319.09	1,188.3	105.0	-91.0	138.9	0.00	0.00	0.00
1,240.0	11.06	319.09	1,227.5	110.8	-96.0	146.6	0.00	0.00	0.00
1,280.0	11.06	319.09	1,266.8	116.6	-101.1	154.3	0.00	0.00	0.00
1,320.0	11.06	319.09	1,306.0	122.4	-106.1	162.0	0.00	0.00	0.00
1,360.0	11.06	319.09	1,345.3	128.2	-111.1	169.6	0.00	0.00	0.00
1,400.0	11.06	319.09	1,384.6	134.0	-116.1	177.3	0.00	0.00	0.00
1,440.0	11.06	319.09	1,423.8	139.8	-121.1	185.0	0.00	0.00	0.00
1,480.0	11.06	319.09	1,463.1	145.6	-126.2	192.7	0.00	0.00	0.00
1,520.0	11.06	319.09	1,502.3	151.4	-131.2	200.3	0.00	0.00	0.00
1,560.0	11.06	319.09	1,541.6	157.2	-136.2	208.0	0.00	0.00	0.00
1,600.0	11.06	319.09	1,580.8	163.0	-141.2	215.7	0.00	0.00	0.00
1,640.0	11.06	319.09	1,620.1	168.8	-146.3	223.3	0.00	0.00	0.00
1,680.0	11.06	319.09	1,659.4	174.6	-151.3	231.0	0.00	0.00	0.00
1,720.0	11.06	319.09	1,698.6	180.4	-156.3	238.7	0.00	0.00	0.00
1,760.0	11.06	319.09	1,737.9	186.2	-161.3	246.4	0.00	0.00	0.00
1,800.0	11.06	319.09	1,777.1	192.0	-166.4	254.0	0.00	0.00	0.00
1,840.0	11.06	319.09	1,816.4	197.8	-171.4	261.7	0.00	0.00	0.00
1,880.0	11.06	319.09	1,855.6	203.6	-176.4	269.4	0.00	0.00	0.00
1,920.0	11.06	319.09	1,894.9	209.4	-181.4	277.1	0.00	0.00	0.00
1,960.0	11.06	319.09	1,934.2	215.2	-186.5	284.7	0.00	0.00	0.00

<b>Database:</b>	Landmark	<b>Local Co-ordinate Reference:</b>	Well Milne 23-18
<b>Company:</b>	BAYSWATER EXPLORATION & PRODUCTION	<b>TVD Reference:</b>	WELL @ 4767.0ft (Original Well Elev)
<b>Project:</b>	SEC.18-T6N-R65W	<b>MD Reference:</b>	WELL @ 4767.0ft (Original Well Elev)
<b>Site:</b>	Milne 23-18 Pad Sec.18-T6N-R65W	<b>North Reference:</b>	True
<b>Well:</b>	Milne 23-18	<b>Survey Calculation Method:</b>	Minimum Curvature
<b>Wellbore:</b>	Wellbore #1		
<b>Design:</b>	Plan #1 (3-5-12)		

Planned Survey									
Measured Depth (ft)	Inclination (°)	Azimuth (°)	Vertical Depth (ft)	+N/-S (ft)	+E/-W (ft)	Vertical Section (ft)	Dogleg Rate (°/100ft)	Build Rate (°/100ft)	Turn Rate (°/100ft)
2,000.0	11.06	319.09	1,973.4	221.0	-191.5	292.4	0.00	0.00	0.00
2,040.0	11.06	319.09	2,012.7	226.8	-196.5	300.1	0.00	0.00	0.00
2,080.0	11.06	319.09	2,051.9	232.6	-201.5	307.7	0.00	0.00	0.00
2,120.0	11.06	319.09	2,091.2	238.4	-206.6	315.4	0.00	0.00	0.00
2,160.0	11.06	319.09	2,130.4	244.2	-211.6	323.1	0.00	0.00	0.00
2,200.0	11.06	319.09	2,169.7	250.0	-216.6	330.8	0.00	0.00	0.00
2,240.0	11.06	319.09	2,209.0	255.7	-221.6	338.4	0.00	0.00	0.00
2,280.0	11.06	319.09	2,248.2	261.5	-226.7	346.1	0.00	0.00	0.00
2,320.0	11.06	319.09	2,287.5	267.3	-231.7	353.8	0.00	0.00	0.00
2,360.0	11.06	319.09	2,326.7	273.1	-236.7	361.4	0.00	0.00	0.00
2,400.0	11.06	319.09	2,366.0	278.9	-241.7	369.1	0.00	0.00	0.00
2,440.0	11.06	319.09	2,405.2	284.7	-246.8	376.8	0.00	0.00	0.00
2,480.0	11.06	319.09	2,444.5	290.5	-251.8	384.5	0.00	0.00	0.00
2,520.0	11.06	319.09	2,483.8	296.3	-256.8	392.1	0.00	0.00	0.00
2,560.0	11.06	319.09	2,523.0	302.1	-261.8	399.8	0.00	0.00	0.00
2,600.0	11.06	319.09	2,562.3	307.9	-266.9	407.5	0.00	0.00	0.00
2,640.0	11.06	319.09	2,601.5	313.7	-271.9	415.2	0.00	0.00	0.00
2,680.0	11.06	319.09	2,640.8	319.5	-276.9	422.8	0.00	0.00	0.00
2,720.0	11.06	319.09	2,680.0	325.3	-281.9	430.5	0.00	0.00	0.00
2,760.0	11.06	319.09	2,719.3	331.1	-287.0	438.2	0.00	0.00	0.00
2,800.0	11.06	319.09	2,758.6	336.9	-292.0	445.8	0.00	0.00	0.00
2,837.1	11.06	319.09	2,795.0	342.3	-296.7	453.0	0.00	0.00	0.00
<b>RICHARDS</b>									
2,840.0	11.06	319.09	2,797.8	342.7	-297.0	453.5	0.00	0.00	0.00
2,880.0	11.06	319.09	2,837.1	348.5	-302.0	461.2	0.00	0.00	0.00
2,920.0	11.06	319.09	2,876.3	354.3	-307.1	468.9	0.00	0.00	0.00
2,960.0	11.06	319.09	2,915.6	360.1	-312.1	476.5	0.00	0.00	0.00
3,000.0	11.06	319.09	2,954.8	365.9	-317.1	484.2	0.00	0.00	0.00
3,040.0	11.06	319.09	2,994.1	371.7	-322.1	491.9	0.00	0.00	0.00
3,080.0	11.06	319.09	3,033.4	377.5	-327.2	499.6	0.00	0.00	0.00
3,120.0	11.06	319.09	3,072.6	383.3	-332.2	507.2	0.00	0.00	0.00
3,160.0	11.06	319.09	3,111.9	389.1	-337.2	514.9	0.00	0.00	0.00
3,200.0	11.06	319.09	3,151.1	394.9	-342.2	522.6	0.00	0.00	0.00
3,240.0	11.06	319.09	3,190.4	400.7	-347.3	530.2	0.00	0.00	0.00
3,280.0	11.06	319.09	3,229.7	406.5	-352.3	537.9	0.00	0.00	0.00
3,320.0	11.06	319.09	3,268.9	412.3	-357.3	545.6	0.00	0.00	0.00
3,360.0	11.06	319.09	3,308.2	418.1	-362.3	553.3	0.00	0.00	0.00
3,400.0	11.06	319.09	3,347.4	423.9	-367.4	560.9	0.00	0.00	0.00
3,440.0	11.06	319.09	3,386.7	429.7	-372.4	568.6	0.00	0.00	0.00
3,480.0	11.06	319.09	3,425.9	435.5	-377.4	576.3	0.00	0.00	0.00
3,520.0	11.06	319.09	3,465.2	441.3	-382.4	583.9	0.00	0.00	0.00
3,560.0	11.06	319.09	3,504.5	447.1	-387.5	591.6	0.00	0.00	0.00
3,600.0	11.06	319.09	3,543.7	452.9	-392.5	599.3	0.00	0.00	0.00
3,640.0	11.06	319.09	3,583.0	458.7	-397.5	607.0	0.00	0.00	0.00
3,680.0	11.06	319.09	3,622.2	464.5	-402.5	614.6	0.00	0.00	0.00
3,720.0	11.06	319.09	3,661.5	470.3	-407.6	622.3	0.00	0.00	0.00
3,760.0	11.06	319.09	3,700.7	476.1	-412.6	630.0	0.00	0.00	0.00
3,764.3	11.06	319.09	3,705.0	476.7	-413.1	630.8	0.00	0.00	0.00
<b>PARKMAN</b>									
3,800.0	11.06	319.09	3,740.0	481.9	-417.6	637.7	0.00	0.00	0.00
3,840.0	11.06	319.09	3,779.3	487.7	-422.6	645.3	0.00	0.00	0.00
3,880.0	11.06	319.09	3,818.5	493.5	-427.7	653.0	0.00	0.00	0.00
3,920.0	11.06	319.09	3,857.8	499.3	-432.7	660.7	0.00	0.00	0.00

<b>Database:</b>	Landmark	<b>Local Co-ordinate Reference:</b>	Well Milne 23-18
<b>Company:</b>	BAYSWATER EXPLORATION & PRODUCTION	<b>TVD Reference:</b>	WELL @ 4767.0ft (Original Well Elev)
<b>Project:</b>	SEC.18-T6N-R65W	<b>MD Reference:</b>	WELL @ 4767.0ft (Original Well Elev)
<b>Site:</b>	Milne 23-18 Pad Sec.18-T6N-R65W	<b>North Reference:</b>	True
<b>Well:</b>	Milne 23-18	<b>Survey Calculation Method:</b>	Minimum Curvature
<b>Wellbore:</b>	Wellbore #1		
<b>Design:</b>	Plan #1 (3-5-12)		

#### Planned Survey

Measured Depth (ft)	Inclination (°)	Azimuth (°)	Vertical Depth (ft)	+N/-S (ft)	+E/-W (ft)	Vertical Section (ft)	Dogleg Rate (°/100ft)	Build Rate (°/100ft)	Turn Rate (°/100ft)
3,960.0	11.06	319.09	3,897.0	505.1	-437.7	668.3	0.00	0.00	0.00
4,000.0	11.06	319.09	3,936.3	510.9	-442.7	676.0	0.00	0.00	0.00
4,040.0	11.06	319.09	3,975.5	516.7	-447.8	683.7	0.00	0.00	0.00
4,080.0	11.06	319.09	4,014.8	522.5	-452.8	691.4	0.00	0.00	0.00
4,120.0	11.06	319.09	4,054.1	528.3	-457.8	699.0	0.00	0.00	0.00
4,160.0	11.06	319.09	4,093.3	534.1	-462.8	706.7	0.00	0.00	0.00
4,200.0	11.06	319.09	4,132.6	539.8	-467.9	714.4	0.00	0.00	0.00
4,240.0	11.06	319.09	4,171.8	545.6	-472.9	722.1	0.00	0.00	0.00
4,280.0	11.06	319.09	4,211.1	551.4	-477.9	729.7	0.00	0.00	0.00
4,320.0	11.06	319.09	4,250.3	557.2	-482.9	737.4	0.00	0.00	0.00
4,360.0	11.06	319.09	4,289.6	563.0	-488.0	745.1	0.00	0.00	0.00
4,400.0	11.06	319.09	4,328.9	568.8	-493.0	752.7	0.00	0.00	0.00
4,440.0	11.06	319.09	4,368.1	574.6	-498.0	760.4	0.00	0.00	0.00
4,480.0	11.06	319.09	4,407.4	580.4	-503.0	768.1	0.00	0.00	0.00
4,518.3	11.06	319.09	4,445.0	586.0	-507.9	775.4	0.00	0.00	0.00
<b>SUSSEX</b>									
4,520.0	11.06	319.09	4,446.6	586.2	-508.1	775.8	0.00	0.00	0.00
4,523.9	11.06	319.09	4,450.5	586.8	-508.6	776.5	0.00	0.00	0.00
4,560.0	10.34	319.09	4,485.9	591.9	-512.9	783.2	2.00	-2.00	0.00
4,600.0	9.54	319.09	4,525.3	597.1	-517.5	790.1	2.00	-2.00	0.00
4,640.0	8.74	319.09	4,564.8	601.9	-521.6	796.5	2.00	-2.00	0.00
4,680.0	7.94	319.09	4,604.4	606.3	-525.4	802.3	2.00	-2.00	0.00
4,720.0	7.14	319.09	4,644.0	610.2	-528.9	807.5	2.00	-2.00	0.00
4,760.0	6.34	319.09	4,683.8	613.8	-531.9	812.2	2.00	-2.00	0.00
4,800.0	5.54	319.09	4,723.6	616.9	-534.6	816.3	2.00	-2.00	0.00
4,840.0	4.74	319.09	4,763.4	619.6	-537.0	819.9	2.00	-2.00	0.00
4,880.0	3.94	319.09	4,803.3	621.9	-539.0	822.9	2.00	-2.00	0.00
4,920.0	3.14	319.09	4,843.2	623.8	-540.6	825.4	2.00	-2.00	0.00
4,960.0	2.34	319.09	4,883.2	625.2	-541.8	827.3	2.00	-2.00	0.00
5,000.0	1.54	319.09	4,923.1	626.2	-542.7	828.7	2.00	-2.00	0.00
5,016.9	1.20	319.09	4,940.0	626.5	-543.0	829.1	2.00	-2.00	0.00
<b>SHANNON</b>									
5,040.0	0.74	319.09	4,963.1	626.8	-543.2	829.5	2.00	-2.00	0.00
5,076.9	0.00	0.00	5,000.0	627.0	-543.4	829.7	2.00	-2.00	110.96
<b>DRILL TARGET BHL 1325'FSL &amp; 2573'FEL - PERMIT TARGET BHL 1325'FSL &amp; 2648'FEL</b>									
5,080.0	0.00	0.00	5,003.1	627.0	-543.4	829.7	0.00	0.00	0.00
5,120.0	0.00	0.00	5,043.1	627.0	-543.4	829.7	0.00	0.00	0.00
5,160.0	0.00	0.00	5,083.1	627.0	-543.4	829.7	0.00	0.00	0.00
5,200.0	0.00	0.00	5,123.1	627.0	-543.4	829.7	0.00	0.00	0.00
5,240.0	0.00	0.00	5,163.1	627.0	-543.4	829.7	0.00	0.00	0.00
5,280.0	0.00	0.00	5,203.1	627.0	-543.4	829.7	0.00	0.00	0.00
5,320.0	0.00	0.00	5,243.1	627.0	-543.4	829.7	0.00	0.00	0.00
5,360.0	0.00	0.00	5,283.1	627.0	-543.4	829.7	0.00	0.00	0.00
5,400.0	0.00	0.00	5,323.1	627.0	-543.4	829.7	0.00	0.00	0.00
5,440.0	0.00	0.00	5,363.1	627.0	-543.4	829.7	0.00	0.00	0.00
5,480.0	0.00	0.00	5,403.1	627.0	-543.4	829.7	0.00	0.00	0.00
5,520.0	0.00	0.00	5,443.1	627.0	-543.4	829.7	0.00	0.00	0.00
5,560.0	0.00	0.00	5,483.1	627.0	-543.4	829.7	0.00	0.00	0.00
5,600.0	0.00	0.00	5,523.1	627.0	-543.4	829.7	0.00	0.00	0.00
5,640.0	0.00	0.00	5,563.1	627.0	-543.4	829.7	0.00	0.00	0.00
5,680.0	0.00	0.00	5,603.1	627.0	-543.4	829.7	0.00	0.00	0.00
5,720.0	0.00	0.00	5,643.1	627.0	-543.4	829.7	0.00	0.00	0.00
5,760.0	0.00	0.00	5,683.1	627.0	-543.4	829.7	0.00	0.00	0.00

<b>Database:</b>	Landmark	<b>Local Co-ordinate Reference:</b>	Well Milne 23-18
<b>Company:</b>	BAYSWATER EXPLORATION & PRODUCTION	<b>TVD Reference:</b>	WELL @ 4767.0ft (Original Well Elev)
<b>Project:</b>	SEC.18-T6N-R65W	<b>MD Reference:</b>	WELL @ 4767.0ft (Original Well Elev)
<b>Site:</b>	Milne 23-18 Pad Sec.18-T6N-R65W	<b>North Reference:</b>	True
<b>Well:</b>	Milne 23-18	<b>Survey Calculation Method:</b>	Minimum Curvature
<b>Wellbore:</b>	Wellbore #1		
<b>Design:</b>	Plan #1 (3-5-12)		

Planned Survey										
Measured Depth (ft)	Inclination (°)	Azimuth (°)	Vertical Depth (ft)	+N/-S (ft)	+E/-W (ft)	Vertical Section (ft)	Dogleg Rate (°/100ft)	Build Rate (°/100ft)	Turn Rate (°/100ft)	
5,800.0	0.00	0.00	5,723.1	627.0	-543.4	829.7	0.00	0.00	0.00	
5,840.0	0.00	0.00	5,763.1	627.0	-543.4	829.7	0.00	0.00	0.00	
5,880.0	0.00	0.00	5,803.1	627.0	-543.4	829.7	0.00	0.00	0.00	
5,920.0	0.00	0.00	5,843.1	627.0	-543.4	829.7	0.00	0.00	0.00	
5,960.0	0.00	0.00	5,883.1	627.0	-543.4	829.7	0.00	0.00	0.00	
6,000.0	0.00	0.00	5,923.1	627.0	-543.4	829.7	0.00	0.00	0.00	
6,040.0	0.00	0.00	5,963.1	627.0	-543.4	829.7	0.00	0.00	0.00	
6,080.0	0.00	0.00	6,003.1	627.0	-543.4	829.7	0.00	0.00	0.00	
6,120.0	0.00	0.00	6,043.1	627.0	-543.4	829.7	0.00	0.00	0.00	
6,160.0	0.00	0.00	6,083.1	627.0	-543.4	829.7	0.00	0.00	0.00	
6,200.0	0.00	0.00	6,123.1	627.0	-543.4	829.7	0.00	0.00	0.00	
6,240.0	0.00	0.00	6,163.1	627.0	-543.4	829.7	0.00	0.00	0.00	
6,280.0	0.00	0.00	6,203.1	627.0	-543.4	829.7	0.00	0.00	0.00	
6,320.0	0.00	0.00	6,243.1	627.0	-543.4	829.7	0.00	0.00	0.00	
6,360.0	0.00	0.00	6,283.1	627.0	-543.4	829.7	0.00	0.00	0.00	
6,400.0	0.00	0.00	6,323.1	627.0	-543.4	829.7	0.00	0.00	0.00	
6,440.0	0.00	0.00	6,363.1	627.0	-543.4	829.7	0.00	0.00	0.00	
6,480.0	0.00	0.00	6,403.1	627.0	-543.4	829.7	0.00	0.00	0.00	
6,520.0	0.00	0.00	6,443.1	627.0	-543.4	829.7	0.00	0.00	0.00	
6,560.0	0.00	0.00	6,483.1	627.0	-543.4	829.7	0.00	0.00	0.00	
6,600.0	0.00	0.00	6,523.1	627.0	-543.4	829.7	0.00	0.00	0.00	
6,640.0	0.00	0.00	6,563.1	627.0	-543.4	829.7	0.00	0.00	0.00	
6,680.0	0.00	0.00	6,603.1	627.0	-543.4	829.7	0.00	0.00	0.00	
6,720.0	0.00	0.00	6,643.1	627.0	-543.4	829.7	0.00	0.00	0.00	
6,760.0	0.00	0.00	6,683.1	627.0	-543.4	829.7	0.00	0.00	0.00	
6,800.0	0.00	0.00	6,723.1	627.0	-543.4	829.7	0.00	0.00	0.00	
6,840.0	0.00	0.00	6,763.1	627.0	-543.4	829.7	0.00	0.00	0.00	
6,880.0	0.00	0.00	6,803.1	627.0	-543.4	829.7	0.00	0.00	0.00	
6,891.9	0.00	0.00	6,815.0	627.0	-543.4	829.7	0.00	0.00	0.00	
NIOBRARA - TARGET CIRCLE 1325'FSL & 2573'FEL										
6,920.0	0.00	0.00	6,843.1	627.0	-543.4	829.7	0.00	0.00	0.00	
6,960.0	0.00	0.00	6,883.1	627.0	-543.4	829.7	0.00	0.00	0.00	
7,000.0	0.00	0.00	6,923.1	627.0	-543.4	829.7	0.00	0.00	0.00	
7,040.0	0.00	0.00	6,963.1	627.0	-543.4	829.7	0.00	0.00	0.00	
7,080.0	0.00	0.00	7,003.1	627.0	-543.4	829.7	0.00	0.00	0.00	
7,120.0	0.00	0.00	7,043.1	627.0	-543.4	829.7	0.00	0.00	0.00	
7,157.9	0.00	0.00	7,081.0	627.0	-543.4	829.7	0.00	0.00	0.00	
FORT HAYES										
7,160.0	0.00	0.00	7,083.1	627.0	-543.4	829.7	0.00	0.00	0.00	
7,191.9	0.00	0.00	7,115.0	627.0	-543.4	829.7	0.00	0.00	0.00	
CODELL										
7,200.0	0.00	0.00	7,123.1	627.0	-543.4	829.7	0.00	0.00	0.00	
7,240.0	0.00	0.00	7,163.1	627.0	-543.4	829.7	0.00	0.00	0.00	
7,245.9	0.00	0.00	7,169.0	627.0	-543.4	829.7	0.00	0.00	0.00	
GREENHORN										
7,280.0	0.00	0.00	7,203.1	627.0	-543.4	829.7	0.00	0.00	0.00	
7,320.0	0.00	0.00	7,243.1	627.0	-543.4	829.7	0.00	0.00	0.00	
7,323.9	0.00	0.00	7,247.0	627.0	-543.4	829.7	0.00	0.00	0.00	
GRANEROS										
7,360.0	0.00	0.00	7,283.1	627.0	-543.4	829.7	0.00	0.00	0.00	
7,400.0	0.00	0.00	7,323.1	627.0	-543.4	829.7	0.00	0.00	0.00	
7,411.9	0.00	0.00	7,335.0	627.0	-543.4	829.7	0.00	0.00	0.00	

Formations					
Measured Depth (ft)	Vertical Depth (ft)	Name	Lithology	Dip (°)	Dip Direction (°)
2,837.1	2,795.0	RICHARDS		0.00	
3,764.3	3,705.0	PARKMAN		0.00	
4,518.3	4,445.0	SUSSEX		0.00	
5,016.9	4,940.0	SHANNON		0.00	
6,891.9	6,815.0	NIOBRARA		0.00	
7,157.9	7,081.0	FORT HAYES		0.00	
7,191.9	7,115.0	CODELL		0.00	
7,245.9	7,169.0	GREENHORN		0.00	
7,323.9	7,247.0	GRANEROS		0.00	





# **BAYSWATER EXPLORATION & PRODUCTION**

**SEC.18-T6N-R65W**

**Milne 23-18 Pad Sec.18-T6N-R65W**

**Milne 23-18**

**Wellbore #1**

**Plan #1 (3-5-12)**

## **Anticollision Report**

**08 March, 2012**

<b>Company:</b>	BAYSWATER EXPLORATION & PRODUCTION	<b>Local Co-ordinate Reference:</b>	Well Milne 23-18
<b>Project:</b>	SEC.18-T6N-R65W	<b>TVD Reference:</b>	WELL @ 4767.0ft (Original Well Elev)
<b>Reference Site:</b>	Milne 23-18 Pad Sec.18-T6N-R65W	<b>MD Reference:</b>	WELL @ 4767.0ft (Original Well Elev)
<b>Site Error:</b>	0.0ft	<b>North Reference:</b>	True
<b>Reference Well:</b>	Milne 23-18	<b>Survey Calculation Method:</b>	Minimum Curvature
<b>Well Error:</b>	0.0ft	<b>Output errors are at</b>	2.00 sigma
<b>Reference Wellbore</b>	Wellbore #1	<b>Database:</b>	Landmark
<b>Reference Design:</b>	Plan #1 (3-5-12)	<b>Offset TVD Reference:</b>	Offset Datum

<b>Reference</b>	Plan #1 (3-5-12)		
<b>Filter type:</b>	NO GLOBAL FILTER: Using user defined selection & filtering criteria		
<b>Interpolation Method:</b>	MD Interval 100.0ft	<b>Error Model:</b>	ISCWSA
<b>Depth Range:</b>	Unlimited	<b>Scan Method:</b>	Closest Approach 3D
<b>Results Limited by:</b>	Maximum center-center distance of 10,000.0ft	<b>Error Surface:</b>	Elliptical Conic
<b>Warning Levels Evaluated at:</b>	2.00 Sigma		

<b>Survey Tool Program</b>	<b>Date</b> 3/7/2012			
<b>From (ft)</b>	<b>To (ft)</b>	<b>Survey (Wellbore)</b>	<b>Tool Name</b>	<b>Description</b>
0.0	7,411.9	Plan #1 (3-5-12) (Wellbore #1)	MWD	MWD - Standard

<b>Summary</b>						
<b>Site Name</b>	<b>Reference Measured Depth (ft)</b>	<b>Offset Measured Depth (ft)</b>	<b>Distance Between Centres (ft)</b>	<b>Separation Between Ellipses (ft)</b>	<b>Warning</b>	
<b>Offset Well - Wellbore - Design</b>						
Milne 23-18 Pad Sec.18-T6N-R65W						
Milne 20-18 - Wellbore #1 - Plan #1 (3-5-12)	200.0	200.0	20.0	19.4	29.710	CC, ES
Milne 20-18 - Wellbore #1 - Plan #1 (3-5-12)	500.0	499.9	32.8	30.8	16.051	SF

Offset Design Milne 23-18 Pad Sec.18-T6N-R65W - Milne 20-18 - Wellbore #1 - Plan #1 (3-5-12)												Offset Site Error: 0.0 ft	
Survey Program: 0-MWD												Offset Well Error: 0.0 ft	
Reference		Offset		Semi Major Axis			Distance						
Measured Depth	Vertical Depth	Measured Depth	Vertical Depth	Reference	Offset	Highside Toolface	Offset Wellbore Centre		Between Centres	Between Ellipses	Minimum Separation	Separation Factor	Warning
(ft)	(ft)	(ft)	(ft)	(ft)	(ft)	(°)	+N/-S (ft)	+E/-W (ft)	(ft)	(ft)	(ft)		
0.0	0.0	0.0	0.0	0.0	0.0	180.00	-20.0	0.0	20.0				
100.0	100.0	100.0	100.0	0.1	0.1	180.00	-20.0	0.0	20.0	19.8	0.22	89.130	
200.0	200.0	200.0	200.0	0.3	0.3	180.00	-20.0	0.0	20.0	19.4	0.67	29.710	CC, ES
300.0	300.0	300.0	300.0	0.6	0.6	-142.13	-20.0	0.0	21.4	20.3	1.13	18.977	
400.0	399.8	399.8	399.8	0.8	0.8	-149.26	-20.0	0.0	25.7	24.1	1.59	16.209	
500.0	499.5	499.9	499.9	1.0	1.0	-159.64	-18.9	1.3	32.8	30.8	2.05	16.051	SF
600.0	598.7	599.4	599.2	1.3	1.2	-171.72	-15.4	5.1	43.3	40.8	2.50	17.298	
700.0	697.5	697.9	697.4	1.7	1.5	177.66	-9.6	11.5	58.4	55.4	2.98	19.586	
800.0	795.7	795.2	794.0	2.0	1.7	169.36	-1.8	20.2	78.1	74.6	3.49	22.384	
900.0	893.8	891.6	889.2	2.4	2.0	162.70	8.2	31.2	100.0	96.0	4.04	24.745	
1,000.0	992.0	986.9	982.8	2.8	2.4	157.06	20.2	44.4	123.9	119.3	4.65	26.657	
1,100.0	1,090.1	1,080.9	1,074.5	3.2	2.7	152.17	34.0	59.7	150.0	144.7	5.30	28.285	
1,200.0	1,188.3	1,176.3	1,167.2	3.7	3.1	148.18	49.2	76.4	177.7	171.7	6.00	29.642	
1,300.0	1,286.4	1,271.7	1,259.9	4.1	3.6	145.26	64.3	93.2	206.0	199.3	6.69	30.783	
1,400.0	1,384.6	1,367.2	1,352.7	4.5	4.0	143.05	79.5	109.9	234.7	227.3	7.39	31.737	
1,500.0	1,482.7	1,462.7	1,445.4	4.9	4.5	141.31	94.6	126.6	263.6	255.5	8.10	32.530	
1,600.0	1,580.8	1,558.1	1,538.2	5.3	4.9	139.92	109.8	143.4	292.7	283.9	8.81	33.222	
1,700.0	1,679.0	1,653.6	1,630.9	5.8	5.4	138.78	125.0	160.1	321.9	312.4	9.52	33.812	
1,800.0	1,777.1	1,749.0	1,723.7	6.2	5.9	137.83	140.1	176.8	351.2	341.0	10.23	34.325	
1,900.0	1,875.3	1,844.5	1,816.4	6.6	6.3	137.02	155.3	193.6	380.6	369.6	10.94	34.773	
2,000.0	1,973.4	1,939.9	1,909.2	7.0	6.8	136.33	170.4	210.3	410.0	398.4	11.66	35.168	
2,100.0	2,071.6	2,035.4	2,001.9	7.4	7.3	135.73	185.6	227.0	439.5	427.2	12.37	35.519	
2,200.0	2,169.7	2,130.9	2,094.7	7.9	7.7	135.21	200.7	243.8	469.1	456.0	13.09	35.833	
2,300.0	2,267.8	2,226.3	2,187.4	8.3	8.2	134.75	215.9	260.5	498.6	484.8	13.81	36.115	

CC - Min centre to center distance or convergent point, SF - min separation factor, ES - min ellipse separation

<b>Company:</b>	BAYSWATER EXPLORATION & PRODUCTION	<b>Local Co-ordinate Reference:</b>	Well Milne 23-18
<b>Project:</b>	SEC.18-T6N-R65W	<b>TVD Reference:</b>	WELL @ 4767.0ft (Original Well Elev)
<b>Reference Site:</b>	Milne 23-18 Pad Sec.18-T6N-R65W	<b>MD Reference:</b>	WELL @ 4767.0ft (Original Well Elev)
<b>Site Error:</b>	0.0ft	<b>North Reference:</b>	True
<b>Reference Well:</b>	Milne 23-18	<b>Survey Calculation Method:</b>	Minimum Curvature
<b>Well Error:</b>	0.0ft	<b>Output errors are at</b>	2.00 sigma
<b>Reference Wellbore</b>	Wellbore #1	<b>Database:</b>	Landmark
<b>Reference Design:</b>	Plan #1 (3-5-12)	<b>Offset TVD Reference:</b>	Offset Datum

Offset Design Milne 23-18 Pad Sec.18-T6N-R65W - Milne 20-18 - Wellbore #1 - Plan #1 (3-5-12)													Offset Site Error:	0.0 ft
Survey Program: 0-MWD													Offset Well Error:	0.0 ft
Measured Depth (ft)	Vertical Depth (ft)	Measured Depth (ft)	Vertical Depth (ft)	Reference	Offset	Semi Major Axis	Highside Toolface (°)	Offset Wellbore Centre +N/-S (ft)	Offset Wellbore Centre +E/-W (ft)	Between Centres (ft)	Between Ellipses (ft)	Minimum Separation (ft)	Separation Factor	Warning
2,400.0	2,366.0	2,321.8	2,280.2	8.7	8.7	134.34		231.1	277.2	528.2	513.7	14.52	36.369	
2,500.0	2,464.1	2,417.2	2,372.9	9.1	9.1	133.98		246.2	294.0	557.8	542.6	15.24	36.600	
2,600.0	2,562.3	2,512.7	2,465.7	9.6	9.6	133.65		261.4	310.7	587.5	571.5	15.96	36.810	
2,700.0	2,660.4	2,608.1	2,558.4	10.0	10.1	133.35		276.5	327.5	617.1	600.4	16.68	37.003	
2,800.0	2,758.6	2,703.6	2,651.2	10.4	10.6	133.08		291.7	344.2	646.8	629.4	17.40	37.179	
2,900.0	2,856.7	2,799.1	2,743.9	10.8	11.0	132.83		306.8	360.9	676.4	658.3	18.11	37.342	
3,000.0	2,954.9	2,894.5	2,836.7	11.3	11.5	132.61		322.0	377.7	706.1	687.3	18.83	37.492	
3,100.0	3,053.0	2,990.0	2,929.4	11.7	12.0	132.40		337.2	394.4	735.8	716.3	19.55	37.631	
3,200.0	3,151.1	3,085.4	3,022.2	12.1	12.5	132.21		352.3	411.1	765.5	745.3	20.27	37.761	
3,300.0	3,249.3	3,180.9	3,114.9	12.6	12.9	132.03		367.5	427.9	795.2	774.2	20.99	37.881	
3,400.0	3,347.4	3,276.3	3,207.7	13.0	13.4	131.87		382.6	444.6	824.9	803.2	21.71	37.994	
3,500.0	3,445.6	3,371.8	3,300.4	13.4	13.9	131.71		397.8	461.3	854.7	832.2	22.43	38.099	
3,600.0	3,543.7	3,467.3	3,393.1	13.8	14.4	131.57		412.9	478.1	884.4	861.2	23.15	38.197	
3,700.0	3,641.9	3,562.7	3,485.9	14.3	14.8	131.44		428.1	494.8	914.1	890.3	23.87	38.290	
3,800.0	3,740.0	3,658.2	3,578.6	14.7	15.3	131.31		443.3	511.5	943.9	919.3	24.59	38.377	
3,900.0	3,838.1	3,753.6	3,671.4	15.1	15.8	131.20		458.4	528.3	973.6	948.3	25.31	38.459	
4,000.0	3,936.3	3,849.1	3,764.1	15.5	16.3	131.09		473.6	545.0	1,003.3	977.3	26.04	38.537	
4,100.0	4,034.4	3,944.5	3,856.9	16.0	16.7	130.98		488.7	561.8	1,033.1	1,006.3	26.76	38.610	
4,200.0	4,132.6	4,040.0	3,949.6	16.4	17.2	130.88		503.9	578.5	1,062.8	1,035.4	27.48	38.680	
4,300.0	4,230.7	4,135.5	4,042.4	16.8	17.7	130.79		519.0	595.2	1,092.6	1,064.4	28.20	38.746	
4,400.0	4,328.9	4,230.9	4,135.1	17.2	18.2	130.70		534.2	612.0	1,122.3	1,093.4	28.92	38.808	
4,500.0	4,427.0	4,326.4	4,227.9	17.7	18.7	130.62		549.3	628.7	1,152.1	1,122.5	29.64	38.867	
4,600.0	4,525.3	4,422.0	4,320.8	18.0	19.1	130.55		564.5	645.5	1,181.2	1,150.8	30.40	38.853	
4,700.0	4,624.2	4,560.5	4,456.1	18.3	19.7	131.01		584.4	667.4	1,206.6	1,175.4	31.17	38.714	
4,800.0	4,723.6	4,703.0	4,596.6	18.6	20.1	131.13		600.2	684.8	1,226.2	1,194.4	31.82	38.534	
4,900.0	4,823.2	4,847.9	4,740.6	18.8	20.4	131.21		611.5	697.3	1,239.9	1,207.5	32.37	38.305	
5,000.0	4,923.1	4,994.5	4,886.8	18.9	20.7	131.25		617.9	704.3	1,247.6	1,214.8	32.82	38.017	
5,100.0	5,023.1	5,130.9	5,023.1	19.0	20.9	90.35		619.4	706.0	1,249.4	1,216.3	33.15	37.693	
5,200.0	5,123.1	5,230.9	5,123.1	19.2	21.0	90.35		619.4	706.0	1,249.4	1,216.0	33.42	37.384	
5,300.0	5,223.1	5,330.9	5,223.1	19.3	21.1	90.35		619.4	706.0	1,249.4	1,215.7	33.70	37.072	
5,400.0	5,323.1	5,430.9	5,323.1	19.4	21.2	90.35		619.4	706.0	1,249.4	1,215.4	33.99	36.762	
5,500.0	5,423.1	5,530.9	5,423.1	19.5	21.3	90.35		619.4	706.0	1,249.4	1,215.2	34.28	36.452	
5,600.0	5,523.1	5,630.9	5,523.1	19.7	21.4	90.35		619.4	706.0	1,249.4	1,214.9	34.57	36.144	
5,700.0	5,623.1	5,730.9	5,623.1	19.8	21.6	90.35		619.4	706.0	1,249.4	1,214.6	34.86	35.838	
5,800.0	5,723.1	5,830.9	5,723.1	19.9	21.7	90.35		619.4	706.0	1,249.4	1,214.3	35.16	35.534	
5,900.0	5,823.1	5,930.9	5,823.1	20.1	21.8	90.35		619.4	706.0	1,249.4	1,214.0	35.46	35.232	
6,000.0	5,923.1	6,030.9	5,923.1	20.2	21.9	90.35		619.4	706.0	1,249.4	1,213.7	35.77	34.932	
6,100.0	6,023.1	6,130.9	6,023.1	20.4	22.1	90.35		619.4	706.0	1,249.4	1,213.4	36.08	34.634	
6,200.0	6,123.1	6,230.9	6,123.1	20.5	22.2	90.35		619.4	706.0	1,249.4	1,213.0	36.39	34.338	
6,300.0	6,223.1	6,330.9	6,223.1	20.7	22.3	90.35		619.4	706.0	1,249.4	1,212.7	36.70	34.044	
6,400.0	6,323.1	6,430.9	6,323.1	20.8	22.5	90.35		619.4	706.0	1,249.4	1,212.4	37.02	33.753	
6,500.0	6,423.1	6,530.9	6,423.1	20.9	22.6	90.35		619.4	706.0	1,249.4	1,212.1	37.34	33.465	
6,600.0	6,523.1	6,630.9	6,523.1	21.1	22.7	90.35		619.4	706.0	1,249.4	1,211.8	37.66	33.179	
6,700.0	6,623.1	6,730.9	6,623.1	21.2	22.9	90.35		619.4	706.0	1,249.4	1,211.4	37.98	32.896	
6,800.0	6,723.1	6,830.9	6,723.1	21.4	23.0	90.35		619.4	706.0	1,249.4	1,211.1	38.31	32.615	
6,900.0	6,823.1	6,930.9	6,823.1	21.5	23.2	90.35		619.4	706.0	1,249.4	1,210.8	38.64	32.337	
7,000.0	6,923.1	7,030.9	6,923.1	21.7	23.3	90.35		619.4	706.0	1,249.4	1,210.5	38.97	32.062	
7,100.0	7,023.1	7,130.9	7,023.1	21.9	23.4	90.35		619.4	706.0	1,249.4	1,210.1	39.30	31.789	
7,200.0	7,123.1	7,230.9	7,123.1	22.0	23.6	90.35		619.4	706.0	1,249.4	1,209.8	39.64	31.519	
7,300.0	7,223.1	7,330.9	7,223.1	22.2	23.7	90.35		619.4	706.0	1,249.4	1,209.4	39.98	31.252	
7,365.6	7,288.7	7,396.5	7,288.7	22.3	23.8	90.35		619.4	706.0	1,249.4	1,209.2	40.20	31.079	

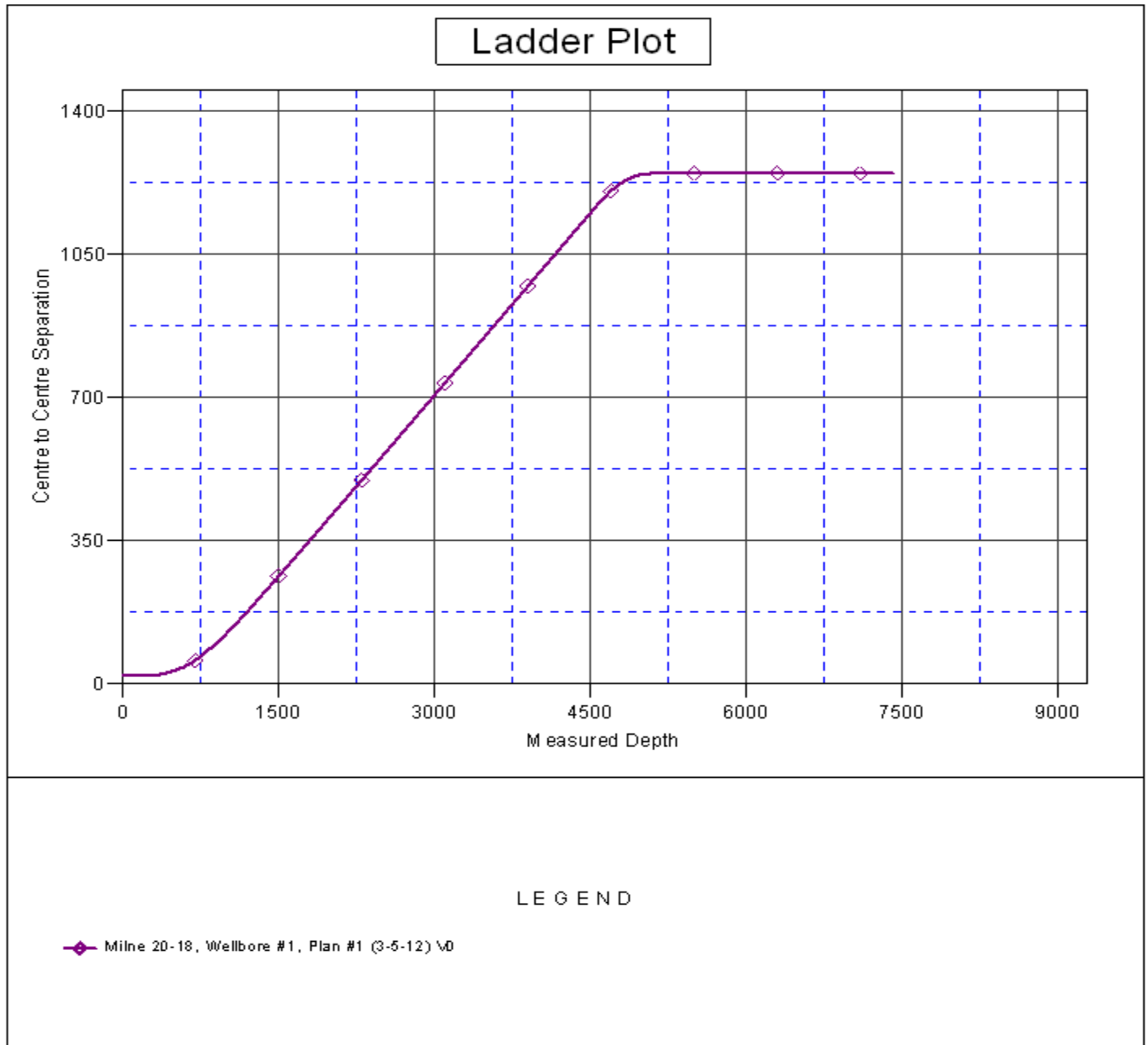
CC - Min centre to center distance or convergent point, SF - min separation factor, ES - min ellipse separation

<b>Company:</b>	BAYSWATER EXPLORATION & PRODUCTION	<b>Local Co-ordinate Reference:</b>	Well Milne 23-18
<b>Project:</b>	SEC.18-T6N-R65W	<b>TVD Reference:</b>	WELL @ 4767.0ft (Original Well Elev)
<b>Reference Site:</b>	Milne 23-18 Pad Sec.18-T6N-R65W	<b>MD Reference:</b>	WELL @ 4767.0ft (Original Well Elev)
<b>Site Error:</b>	0.0ft	<b>North Reference:</b>	True
<b>Reference Well:</b>	Milne 23-18	<b>Survey Calculation Method:</b>	Minimum Curvature
<b>Well Error:</b>	0.0ft	<b>Output errors are at</b>	2.00 sigma
<b>Reference Wellbore</b>	Wellbore #1	<b>Database:</b>	Landmark
<b>Reference Design:</b>	Plan #1 (3-5-12)	<b>Offset TVD Reference:</b>	Offset Datum

<b>Offset Design</b> Milne 23-18 Pad Sec.18-T6N-R65W - Milne 20-18 - Wellbore #1 - Plan #1 (3-5-12)												<b>Offset Site Error:</b>	0.0 ft
Survey Program: 0-MWD												<b>Offset Well Error:</b>	0.0 ft
Reference	Offset	Semi Major Axis		Distance									
Measured Depth (ft)	Vertical Depth (ft)	Measured Depth (ft)	Vertical Depth (ft)	Reference (ft)	Offset (ft)	Highside Toolface (°)	Offset Wellbore Centre +N/-S (ft)	+E/-W (ft)	Between Centres (ft)	Between Ellipses (ft)	Minimum Separation (ft)	Separation Factor	Warning
7,400.0	7,323.1	7,427.7	7,320.0	22.3	23.9	90.35	619.4	706.0	1,249.4	1,209.1	40.31	30.992	
7,411.9	7,335.0	7,427.7	7,320.0	22.3	23.9	90.35	619.4	706.0	1,249.5	1,209.2	40.33	30.979	

<b>Company:</b>	BAYSWATER EXPLORATION & PRODUCTION	<b>Local Co-ordinate Reference:</b>	Well Milne 23-18
<b>Project:</b>	SEC.18-T6N-R65W	<b>TVD Reference:</b>	WELL @ 4767.0ft (Original Well Elev)
<b>Reference Site:</b>	Milne 23-18 Pad Sec.18-T6N-R65W	<b>MD Reference:</b>	WELL @ 4767.0ft (Original Well Elev)
<b>Site Error:</b>	0.0ft	<b>North Reference:</b>	True
<b>Reference Well:</b>	Milne 23-18	<b>Survey Calculation Method:</b>	Minimum Curvature
<b>Well Error:</b>	0.0ft	<b>Output errors are at</b>	2.00 sigma
<b>Reference Wellbore</b>	Wellbore #1	<b>Database:</b>	Landmark
<b>Reference Design:</b>	Plan #1 (3-5-12)	<b>Offset TVD Reference:</b>	Offset Datum

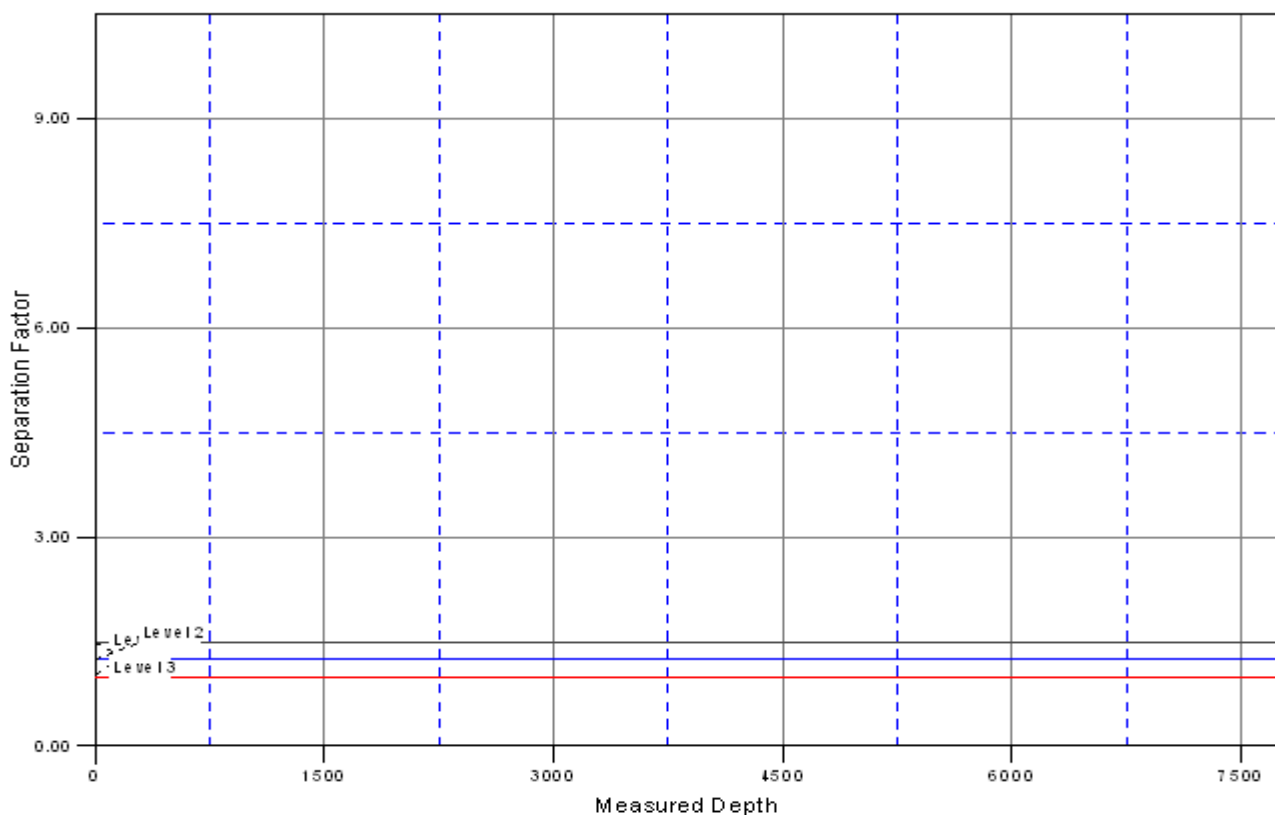
Reference Depths are relative to WELL @ 4767.0ft (Original Well Elev) Coordinates are relative to: Milne 23-18  
 Offset Depths are relative to Offset Datum  
 Central Meridian is -105.500000 °  
 Coordinate System is US State Plane 1983, Colorado Northern Zone  
 Grid Convergence at Surface is: 0.51°



<b>Company:</b>	BAYSWATER EXPLORATION & PRODUCTION	<b>Local Co-ordinate Reference:</b>	Well Milne 23-18
<b>Project:</b>	SEC.18-T6N-R65W	<b>TVD Reference:</b>	WELL @ 4767.0ft (Original Well Elev)
<b>Reference Site:</b>	Milne 23-18 Pad Sec.18-T6N-R65W	<b>MD Reference:</b>	WELL @ 4767.0ft (Original Well Elev)
<b>Site Error:</b>	0.0ft	<b>North Reference:</b>	True
<b>Reference Well:</b>	Milne 23-18	<b>Survey Calculation Method:</b>	Minimum Curvature
<b>Well Error:</b>	0.0ft	<b>Output errors are at</b>	2.00 sigma
<b>Reference Wellbore</b>	Wellbore #1	<b>Database:</b>	Landmark
<b>Reference Design:</b>	Plan #1 (3-5-12)	<b>Offset TVD Reference:</b>	Offset Datum

Reference Depths are relative to WELL @ 4767.0ft (Original Well Elev) Coordinates are relative to: Milne 23-18  
 Offset Depths are relative to Offset Datum  
 Central Meridian is -105.500000 °  
 Coordinate System is US State Plane 1983, Colorado Northern Zone  
 Grid Convergence at Surface is: 0.51°

### Separation Factor Plot



### LEGEND

◆ Milne 20-18, Wellbore #1, Plan #1 (3-5-12) \0