

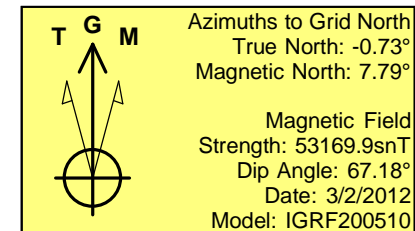
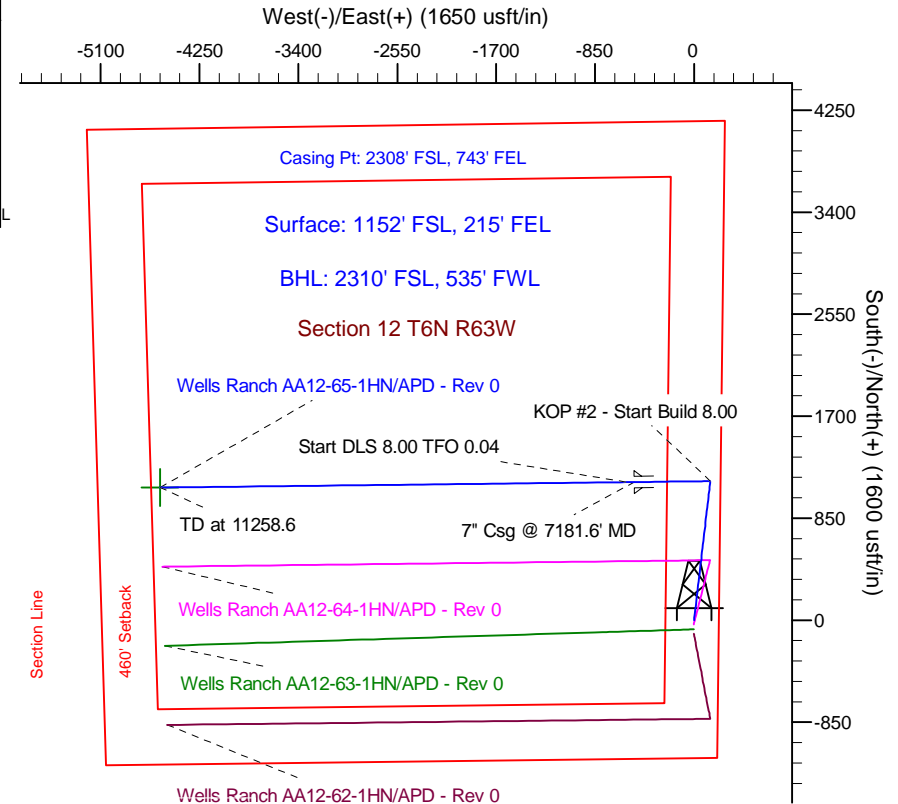
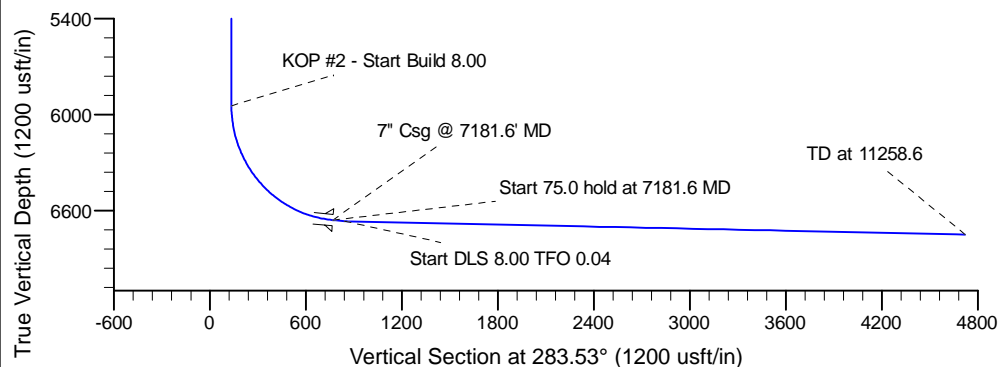
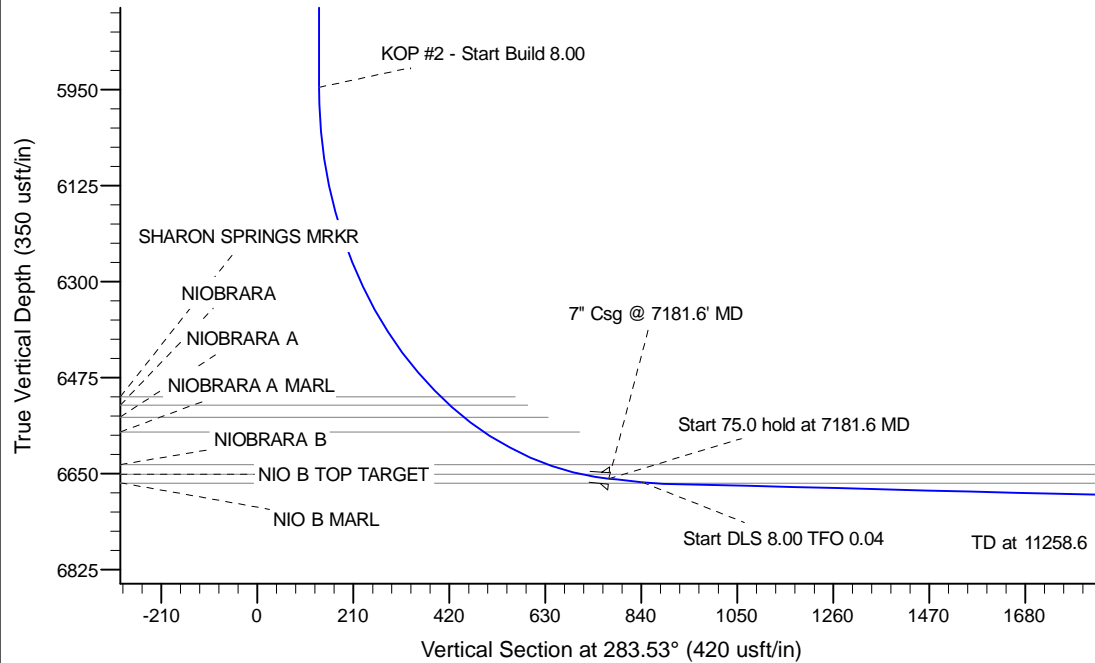
Project: Wattenberg Field  
 Site: AA (Sec.12-T06N-R63W) Weld County, CO  
 Well: Wells Ranch AA12-65-1HN  
 Wellbore: Original Drilling  
 Design: APD - Rev 0

# Northern Region Drilling

Geodetic System: US State Plane 1983  
 Datum: North American Datum 1983  
 Ellipsoid: GRS 1980  
 Zone: Colorado Northern Zone  
 System Datum: Mean Sea Level

## SECTION DETAILS

Sec	MD	Inc	Azi	TVD	+N/-S	+E/-W	Dleg	TFace	VSec	Target
1	0.0	0.00	0.00	0.0	0.0	0.0	0.00	0.00	0.0	
2	1000.0	0.00	0.00	1000.0	0.0	0.0	0.00	0.00	0.0	
3	1723.7	18.09	6.89	1711.7	112.5	13.6	2.50	6.89	13.1	
4	4749.9	18.09	6.89	4588.3	1045.5	126.4	0.00	0.00	121.8	
5	5473.6	0.00	0.00	5300.0	1158.0	140.0	2.50	180.00	134.9	
6	6119.1	0.00	0.00	5945.5	1158.0	140.0	0.00	0.00	134.9	
7	7181.6	85.00	269.35	6659.0	1150.6	-513.7	8.00	269.35	768.7	
8	7256.6	85.00	269.35	6665.5	1149.7	-588.4	0.00	0.00	841.1	
9	7304.4	88.82	269.35	6668.1	1149.2	-636.2	8.00	0.04	887.4	
10	11258.6	88.82	269.35	6749.3	1104.5	-4589.2	0.00	0.00	4720.3	Wells Ranch AA12-65-1HN BHL 2310'FSL, 535'FWL



WELL DETAILS: Wells Ranch AA12-65-1HN			
Ground Level: 4858.0			
Northing	Easting	Latitude	Longitude
1425875.14	3312594.96	40.496990	-104.375980
Plan: APD - Rev 0 (Wells Ranch AA12-65-1HN/Original Drilling)			
Created By: Carrie Willers		Date: 10:10, March 05 2012	
OK to submit with 2A as per Noble Drilling			
3/5/2012 16:04			