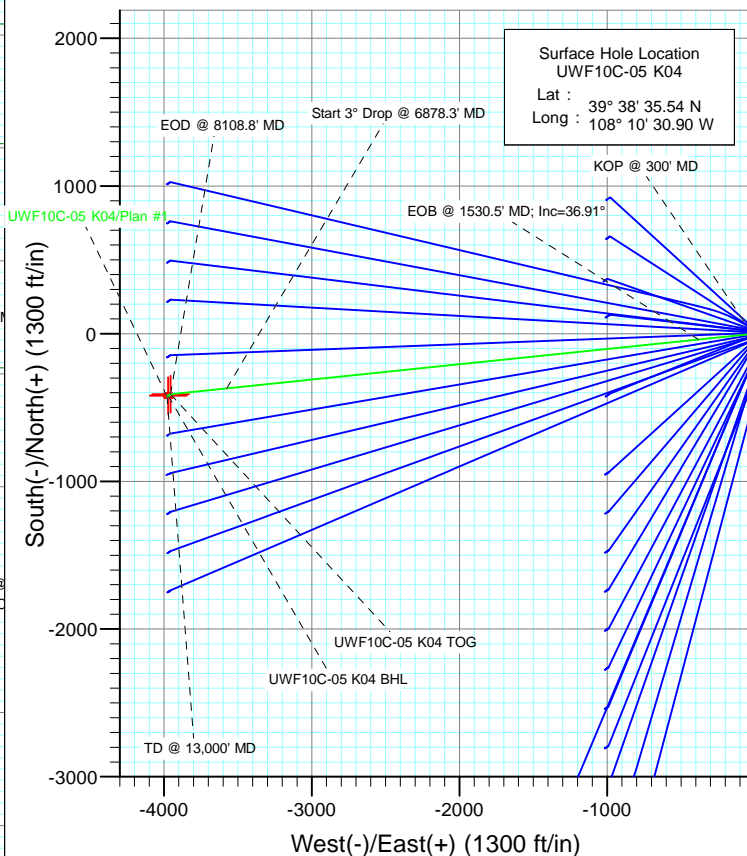


SECTION DETAILS										
Sec	MD	Inc	Azi	TVD	+N/-S	+E/-W	Dleg	TFace	VSect	Target
1	0.0	0.00	0.00	0.0	0.0	0.0	0.00	0.00	0.0	
2	300.0	0.00	0.00	300.0	0.0	0.0	0.00	0.00	0.0	
3	1530.5	36.91	264.09	1447.1	-39.4	-380.8	3.00	264.09	382.9	
4	6878.3	36.91	264.09	5722.9	-370.2	-3575.8	0.00	0.00	3594.9	
5	8108.8	0.00	0.00	6870.0	-409.6	-3956.6	3.00	180.00	3977.7	UWF10C-05 K04 TOG
6	9844.0	0.39	236.29	8605.2	-412.9	-3961.5	0.02	236.29	3983.0	
7	11602.9	0.39	236.29	10364.0	-419.6	-3971.6	0.00	0.00	3993.7	UWF10C-05 K04 BHL
8	13000.0	0.39	236.29	11761.1	-424.9	-3979.5	0.00	0.00	4002.1	



Azimuths to True North  
Magnetic North: 10.34°  
  
Magnetic Field  
Strength: 52205.4nT  
Dip Angle: 65.80°  
Date: 4/12/2012  
Model: IGRF2010

#### FORMATION TOP DETAILS

TVDPath	MDPath	Formation
958.0	971.8	A_GROOVE_TVD
1110.0	1136.5	B_GROOVE_TVD
1150.0	1180.9	B_GROOVE_BASE_TVD
1903.0	2100.7	GARDEN_GULCH_TVD
2963.0	3426.5	WASATCH_FM_TVD
4948.0	5909.1	WASATCH_G_TVD
6870.0	8108.8	WILLIAMS_FORK_TVD
10364.0	11602.9	ROLLINS_TVD
10611.0	11849.9	COZZETTE_TVD
10785.0	12023.9	CORCORAN_TVD
11081.0	12319.9	UPPER_SEGO_TVD

Plan #1  
UWF10C-05 K04  
KB @ 8226.0ft (Original Well Elev)  
North American Datum 1983  
Well UWF10C-05 K04, True North

Type	Target	Azimuth	Origin	N/S	E/W	From
TD	No Target (Freehand)	263.91	Type Slot	0.0	0.0	TVD
Name		TVD	+N/-S	+E/-W	Latitude	Longitude
UWF10C-05 K04 TOG		6870.0	-409.6	-3956.6	39° 38' 31.49 N	108° 11' 21.48 W
UWF10C-05 K04 BHL		10364.0	-419.6	-3971.6	39° 38' 31.39 N	108° 11' 21.67 W

## Planning Report

<b>Database:</b>	USA EDM 5000 Multi Users DB	<b>Local Co-ordinate Reference:</b>	Well UWF10C-05 K04
<b>Company:</b>	EnCana Oil & Gas (USA) Inc	<b>TVD Reference:</b>	KB @ 8226.0ft (Original Well Elev)
<b>Project:</b>	North Piceance	<b>MD Reference:</b>	KB @ 8226.0ft (Original Well Elev)
<b>Site:</b>	K04 Pad	<b>North Reference:</b>	True
<b>Well:</b>	UWF10C-05 K04	<b>Survey Calculation Method:</b>	Minimum Curvature
<b>Wellbore:</b>	DD		
<b>Design:</b>	Plan #1		

<b>Project</b>	North Piceance		
<b>Map System:</b>	US State Plane 1983	<b>System Datum:</b>	Mean Sea Level
<b>Geo Datum:</b>	North American Datum 1983		
<b>Map Zone:</b>	Colorado Central Zone		

Site		K04 Pad			
Site Position:		Northing:	1,636,938.27 ft	Latitude:	39° 33' 11.18 N
From:	Lat/Long	Easting:	2,263,572.45 ft	Longitude:	108° 6' 43.51 W
Position Uncertainty:	0.0 ft	Slot Radius:	13.200 in	Grid Convergence:	-1.65 °

Well	UWF10C-05 K04					
Well Position	+N/-S	0.0 ft	Northing:	1,670,261.45 ft	Latitude:	39° 38' 35.54 N
	+E/-W	0.0 ft	Easting:	2,246,735.55 ft	Longitude:	108° 10' 30.90 W
Position Uncertainty		0.0 ft	Wellhead Elevation:	ft	Ground Level:	8,193.0 ft

<b>Wellbore</b>	DD				
<b>Magnetics</b>	<b>Model Name</b>	<b>Sample Date</b>	<b>Declination (°)</b>	<b>Dip Angle (°)</b>	<b>Field Strength (nT)</b>
	IGRF2010	4/12/2012	10.34	65.80	52,205

<b>Design</b>	Plan #1				
<b>Audit Notes:</b>					
<b>Version:</b>	<b>Phase:</b>	PLAN	<b>Tie On Depth:</b>	0.0	
<b>Vertical Section:</b>	<b>Depth From (TVD) (ft)</b>	<b>+N/-S (ft)</b>	<b>+E/-W (ft)</b>	<b>Direction (°)</b>	
	0.0	0.0	0.0	263.91	

<b>Plan Sections</b>										
Measured Depth (ft)	Inclination (°)	Azimuth (°)	Vertical Depth (ft)	+N/-S (ft)	+E/-W (ft)	Dogleg Rate (°/100ft)	Build Rate (°/100ft)	Turn Rate (°/100ft)	TFO (°)	Target
0.0	0.00	0.00	0.0	0.0	0.0	0.00	0.00	0.00	0.00	
300.0	0.00	0.00	300.0	0.0	0.0	0.00	0.00	0.00	0.00	
1,530.5	36.91	264.09	1,447.1	-39.4	-380.8	3.00	3.00	0.00	264.09	
6,878.3	36.91	264.09	5,722.9	-370.2	-3,575.8	0.00	0.00	0.00	0.00	
8,108.8	0.00	0.00	6,870.0	-409.6	-3,956.6	3.00	-3.00	0.00	180.00	UWF10C-05 K04 TOC
9,844.0	0.39	236.29	8,605.2	-412.9	-3,961.5	0.02	0.02	-7.13	236.29	
11,602.9	0.39	236.29	10,364.0	-419.6	-3,971.6	0.00	0.00	0.00	0.00	UWF10C-05 K04 BHL
13,000.0	0.39	236.29	11,761.1	-424.9	-3,979.5	0.00	0.00	0.00	0.00	

# Planning Report

<b>Database:</b>	USA EDM 5000 Multi Users DB	<b>Local Co-ordinate Reference:</b>	Well UWF10C-05 K04
<b>Company:</b>	EnCana Oil & Gas (USA) Inc	<b>TVD Reference:</b>	KB @ 8226.0ft (Original Well Elev)
<b>Project:</b>	North Piceance	<b>MD Reference:</b>	KB @ 8226.0ft (Original Well Elev)
<b>Site:</b>	K04 Pad	<b>North Reference:</b>	True
<b>Well:</b>	UWF10C-05 K04	<b>Survey Calculation Method:</b>	Minimum Curvature
<b>Wellbore:</b>	DD		
<b>Design:</b>	Plan #1		

Planned Survey									
Measured Depth (ft)	Inclination (°)	Azimuth (°)	Vertical Depth (ft)	+N/-S (ft)	+E/-W (ft)	Vertical Section (ft)	Dogleg Rate (°/100ft)	Build Rate (°/100ft)	Comments / Formations
0.0	0.00	0.00	0.0	0.0	0.0	0.0	0.00	0.00	
100.0	0.00	0.00	100.0	0.0	0.0	0.0	0.00	0.00	
200.0	0.00	0.00	200.0	0.0	0.0	0.0	0.00	0.00	
300.0	0.00	0.00	300.0	0.0	0.0	0.0	0.00	0.00	KOP @ 300' MD
400.0	3.00	264.09	400.0	-0.3	-2.6	2.6	3.00	3.00	
500.0	6.00	264.09	499.6	-1.1	-10.4	10.5	3.00	3.00	
600.0	9.00	264.09	598.8	-2.4	-23.4	23.5	3.00	3.00	
700.0	12.00	264.09	697.1	-4.3	-41.5	41.7	3.00	3.00	
800.0	15.00	264.09	794.3	-6.7	-64.7	65.1	3.00	3.00	
900.0	18.00	264.09	890.2	-9.6	-93.0	93.5	3.00	3.00	
971.8	20.15	264.09	958.0	-12.0	-116.3	116.9	3.00	3.00	A_GROOVE_TVD
1,000.0	21.00	264.09	984.4	-13.1	-126.2	126.9	3.00	3.00	
1,100.0	24.00	264.09	1,076.8	-17.0	-164.2	165.1	3.00	3.00	
1,136.5	25.09	264.09	1,110.0	-18.6	-179.3	180.3	3.00	3.00	B_GROOVE_TVD
1,180.9	26.43	264.09	1,150.0	-20.6	-198.5	199.6	3.00	3.00	B_GROOVE_BASE_TVD
1,200.0	27.00	264.09	1,167.1	-21.4	-207.1	208.2	3.00	3.00	
1,300.0	30.00	264.09	1,254.9	-26.3	-254.5	255.9	3.00	3.00	
1,400.0	33.00	264.09	1,340.2	-31.7	-306.5	308.1	3.00	3.00	
1,500.0	36.00	264.09	1,422.6	-37.6	-362.8	364.7	3.00	3.00	
1,530.5	36.91	264.09	1,447.1	-39.4	-380.8	382.9	3.00	3.00	EOB @ 1530.5' MD; Inc=36.91°
1,600.0	36.91	264.09	1,502.7	-43.7	-422.4	424.6	0.00	0.00	
1,700.0	36.91	264.09	1,582.6	-49.9	-482.1	484.7	0.00	0.00	
1,800.0	36.91	264.09	1,662.6	-56.1	-541.8	544.7	0.00	0.00	
1,900.0	36.91	264.09	1,742.5	-62.3	-601.6	604.8	0.00	0.00	
2,000.0	36.91	264.09	1,822.5	-68.5	-661.3	664.9	0.00	0.00	
2,100.0	36.91	264.09	1,902.5	-74.6	-721.1	724.9	0.00	0.00	
2,100.7	36.91	264.09	1,903.0	-74.7	-721.5	725.3	0.00	0.00	GARDEN_GULCH_TVD
2,200.0	36.91	264.09	1,982.4	-80.8	-780.8	785.0	0.00	0.00	
2,300.0	36.91	264.09	2,062.4	-87.0	-840.6	845.0	0.00	0.00	
2,400.0	36.91	264.09	2,142.3	-93.2	-900.3	905.1	0.00	0.00	
2,500.0	36.91	264.09	2,222.3	-99.4	-960.0	965.2	0.00	0.00	
2,600.0	36.91	264.09	2,302.2	-105.6	-1,019.8	1,025.2	0.00	0.00	
2,700.0	36.91	264.09	2,382.2	-111.8	-1,079.5	1,085.3	0.00	0.00	
2,800.0	36.91	264.09	2,462.1	-117.9	-1,139.3	1,145.4	0.00	0.00	
2,900.0	36.91	264.09	2,542.1	-124.1	-1,199.0	1,205.4	0.00	0.00	
3,000.0	36.91	264.09	2,622.0	-130.3	-1,258.8	1,265.5	0.00	0.00	
3,100.0	36.91	264.09	2,702.0	-136.5	-1,318.5	1,325.5	0.00	0.00	
3,200.0	36.91	264.09	2,781.9	-142.7	-1,378.2	1,385.6	0.00	0.00	
3,300.0	36.91	264.09	2,861.9	-148.9	-1,438.0	1,445.7	0.00	0.00	
3,400.0	36.91	264.09	2,941.8	-155.0	-1,497.7	1,505.7	0.00	0.00	
3,426.5	36.91	264.09	2,963.0	-156.7	-1,513.5	1,521.6	0.00	0.00	WASATCH_FM_TVD
3,500.0	36.91	264.09	3,021.8	-161.2	-1,557.5	1,565.8	0.00	0.00	
3,600.0	36.91	264.09	3,101.8	-167.4	-1,617.2	1,625.8	0.00	0.00	
3,700.0	36.91	264.09	3,181.7	-173.6	-1,677.0	1,685.9	0.00	0.00	
3,800.0	36.91	264.09	3,261.7	-179.8	-1,736.7	1,746.0	0.00	0.00	
3,900.0	36.91	264.09	3,341.6	-186.0	-1,796.4	1,806.0	0.00	0.00	
4,000.0	36.91	264.09	3,421.6	-192.2	-1,856.2	1,866.1	0.00	0.00	
4,100.0	36.91	264.09	3,501.5	-198.3	-1,915.9	1,926.2	0.00	0.00	
4,200.0	36.91	264.09	3,581.5	-204.5	-1,975.7	1,986.2	0.00	0.00	
4,300.0	36.91	264.09	3,661.4	-210.7	-2,035.4	2,046.3	0.00	0.00	
4,400.0	36.91	264.09	3,741.4	-216.9	-2,095.2	2,106.3	0.00	0.00	
4,500.0	36.91	264.09	3,821.3	-223.1	-2,154.9	2,166.4	0.00	0.00	

# Planning Report

<b>Database:</b>	USA EDM 5000 Multi Users DB	<b>Local Co-ordinate Reference:</b>	Well UWF10C-05 K04
<b>Company:</b>	EnCana Oil & Gas (USA) Inc	<b>TVD Reference:</b>	KB @ 8226.0ft (Original Well Elev)
<b>Project:</b>	North Piceance	<b>MD Reference:</b>	KB @ 8226.0ft (Original Well Elev)
<b>Site:</b>	K04 Pad	<b>North Reference:</b>	True
<b>Well:</b>	UWF10C-05 K04	<b>Survey Calculation Method:</b>	Minimum Curvature
<b>Wellbore:</b>	DD		
<b>Design:</b>	Plan #1		

Planned Survey									
Measured Depth (ft)	Inclination (°)	Azimuth (°)	Vertical Depth (ft)	+N/-S (ft)	+E/-W (ft)	Vertical Section (ft)	Dogleg Rate (°/100ft)	Build Rate (°/100ft)	Comments / Formations
4,600.0	36.91	264.09	3,901.3	-229.3	-2,214.6	2,226.5	0.00	0.00	
4,700.0	36.91	264.09	3,981.2	-235.5	-2,274.4	2,286.5	0.00	0.00	
4,800.0	36.91	264.09	4,061.2	-241.6	-2,334.1	2,346.6	0.00	0.00	
4,900.0	36.91	264.09	4,141.2	-247.8	-2,393.9	2,406.6	0.00	0.00	
5,000.0	36.91	264.09	4,221.1	-254.0	-2,453.6	2,466.7	0.00	0.00	
5,100.0	36.91	264.09	4,301.1	-260.2	-2,513.4	2,526.8	0.00	0.00	
5,200.0	36.91	264.09	4,381.0	-266.4	-2,573.1	2,586.8	0.00	0.00	
5,300.0	36.91	264.09	4,461.0	-272.6	-2,632.8	2,646.9	0.00	0.00	
5,400.0	36.91	264.09	4,540.9	-278.7	-2,692.6	2,707.0	0.00	0.00	
5,500.0	36.91	264.09	4,620.9	-284.9	-2,752.3	2,767.0	0.00	0.00	
5,600.0	36.91	264.09	4,700.8	-291.1	-2,812.1	2,827.1	0.00	0.00	
5,700.0	36.91	264.09	4,780.8	-297.3	-2,871.8	2,887.1	0.00	0.00	
5,800.0	36.91	264.09	4,860.7	-303.5	-2,931.5	2,947.2	0.00	0.00	
5,900.0	36.91	264.09	4,940.7	-309.7	-2,991.3	3,007.3	0.00	0.00	
5,909.1	36.91	264.09	4,948.0	-310.2	-2,996.8	3,012.8	0.00	0.00	WASATCH_G_TVD
6,000.0	36.91	264.09	5,020.6	-315.9	-3,051.0	3,067.3	0.00	0.00	
6,100.0	36.91	264.09	5,100.6	-322.0	-3,110.8	3,127.4	0.00	0.00	
6,200.0	36.91	264.09	5,180.5	-328.2	-3,170.5	3,187.4	0.00	0.00	
6,300.0	36.91	264.09	5,260.5	-334.4	-3,230.3	3,247.5	0.00	0.00	
6,400.0	36.91	264.09	5,340.5	-340.6	-3,290.0	3,307.6	0.00	0.00	
6,500.0	36.91	264.09	5,420.4	-346.8	-3,349.7	3,367.6	0.00	0.00	
6,600.0	36.91	264.09	5,500.4	-353.0	-3,409.5	3,427.7	0.00	0.00	
6,700.0	36.91	264.09	5,580.3	-359.1	-3,469.2	3,487.8	0.00	0.00	
6,800.0	36.91	264.09	5,660.3	-365.3	-3,529.0	3,547.8	0.00	0.00	
6,878.3	36.91	264.09	5,722.9	-370.2	-3,575.8	3,594.9	0.00	0.00	Start 3° Drop @ 6878.3' MD
6,900.0	36.26	264.09	5,740.3	-371.5	-3,588.6	3,607.8	3.00	-3.00	
7,000.0	33.26	264.09	5,822.4	-377.4	-3,645.3	3,664.8	3.00	-3.00	
7,100.0	30.26	264.09	5,907.5	-382.8	-3,697.7	3,717.4	3.00	-3.00	
7,200.0	27.26	264.09	5,995.1	-387.8	-3,745.5	3,765.5	3.00	-3.00	
7,300.0	24.26	264.09	6,085.1	-392.2	-3,788.8	3,809.0	3.00	-3.00	
7,400.0	21.26	264.09	6,177.3	-396.2	-3,827.3	3,847.7	3.00	-3.00	
7,500.0	18.26	264.09	6,271.4	-399.7	-3,860.9	3,881.5	3.00	-3.00	
7,600.0	15.26	264.09	6,367.2	-402.7	-3,889.6	3,910.3	3.00	-3.00	
7,700.0	12.26	264.09	6,464.3	-405.1	-3,913.2	3,934.1	3.00	-3.00	
7,800.0	9.26	264.09	6,562.5	-407.0	-3,931.8	3,952.8	3.00	-3.00	
7,900.0	6.26	264.09	6,661.6	-408.4	-3,945.3	3,966.3	3.00	-3.00	
8,000.0	3.26	264.09	6,761.2	-409.3	-3,953.5	3,974.6	3.00	-3.00	
8,100.0	0.26	264.09	6,861.2	-409.6	-3,956.6	3,977.7	3.00	-3.00	
8,108.8	0.00	0.00	6,870.0	-409.6	-3,956.6	3,977.7	3.00	-3.00	EOD @ 8108.8' MD - WILLIAMS_FORK_TVD -
8,200.0	0.02	236.29	6,961.2	-409.6	-3,956.6	3,977.7	0.02	0.02	
8,300.0	0.04	236.29	7,061.2	-409.6	-3,956.7	3,977.8	0.02	0.02	
8,400.0	0.07	236.29	7,161.2	-409.7	-3,956.7	3,977.9	0.02	0.02	
8,500.0	0.09	236.29	7,261.2	-409.8	-3,956.9	3,978.0	0.02	0.02	
8,600.0	0.11	236.29	7,361.2	-409.9	-3,957.0	3,978.1	0.02	0.02	
8,700.0	0.13	236.29	7,461.2	-410.0	-3,957.2	3,978.3	0.02	0.02	
8,800.0	0.16	236.29	7,561.2	-410.1	-3,957.4	3,978.6	0.02	0.02	
8,900.0	0.18	236.29	7,661.2	-410.3	-3,957.6	3,978.8	0.02	0.02	
9,000.0	0.20	236.29	7,761.2	-410.5	-3,957.9	3,979.1	0.02	0.02	
9,100.0	0.22	236.29	7,861.2	-410.7	-3,958.2	3,979.4	0.02	0.02	
9,200.0	0.25	236.29	7,961.2	-410.9	-3,958.6	3,979.8	0.02	0.02	
9,300.0	0.27	236.29	8,061.2	-411.2	-3,958.9	3,980.2	0.02	0.02	
9,400.0	0.29	236.29	8,161.2	-411.4	-3,959.3	3,980.6	0.02	0.02	

# Planning Report

<b>Database:</b>	USA EDM 5000 Multi Users DB	<b>Local Co-ordinate Reference:</b>	Well UWF10C-05 K04
<b>Company:</b>	EnCana Oil & Gas (USA) Inc	<b>TVD Reference:</b>	KB @ 8226.0ft (Original Well Elev)
<b>Project:</b>	North Piceance	<b>MD Reference:</b>	KB @ 8226.0ft (Original Well Elev)
<b>Site:</b>	K04 Pad	<b>North Reference:</b>	True
<b>Well:</b>	UWF10C-05 K04	<b>Survey Calculation Method:</b>	Minimum Curvature
<b>Wellbore:</b>	DD		
<b>Design:</b>	Plan #1		

Planned Survey									
Measured Depth (ft)	Inclination (°)	Azimuth (°)	Vertical Depth (ft)	+N/-S (ft)	+E/-W (ft)	Vertical Section (ft)	Dogleg Rate (°/100ft)	Build Rate (°/100ft)	Comments / Formations
9,500.0	0.31	236.29	8,261.2	-411.7	-3,959.8	3,981.1	0.02	0.02	
9,600.0	0.34	236.29	8,361.2	-412.0	-3,960.2	3,981.6	0.02	0.02	
9,700.0	0.36	236.29	8,461.2	-412.4	-3,960.8	3,982.2	0.02	0.02	
9,800.0	0.38	236.29	8,561.2	-412.7	-3,961.3	3,982.7	0.02	0.02	
9,844.0	0.39	236.29	8,605.2	-412.9	-3,961.5	3,983.0	0.02	0.02	
9,900.0	0.39	236.29	8,661.2	-413.1	-3,961.9	3,983.3	0.00	0.00	
10,000.0	0.39	236.29	8,761.2	-413.5	-3,962.4	3,983.9	0.00	0.00	
10,100.0	0.39	236.29	8,861.2	-413.9	-3,963.0	3,984.5	0.00	0.00	
10,200.0	0.39	236.29	8,961.2	-414.3	-3,963.6	3,985.1	0.00	0.00	
10,300.0	0.39	236.29	9,061.2	-414.6	-3,964.1	3,985.8	0.00	0.00	
10,400.0	0.39	236.29	9,161.2	-415.0	-3,964.7	3,986.4	0.00	0.00	
10,500.0	0.39	236.29	9,261.2	-415.4	-3,965.3	3,987.0	0.00	0.00	
10,600.0	0.39	236.29	9,361.2	-415.8	-3,965.8	3,987.6	0.00	0.00	
10,700.0	0.39	236.29	9,461.2	-416.2	-3,966.4	3,988.2	0.00	0.00	
10,800.0	0.39	236.29	9,561.2	-416.5	-3,967.0	3,988.8	0.00	0.00	
10,900.0	0.39	236.29	9,661.2	-416.9	-3,967.6	3,989.4	0.00	0.00	
11,000.0	0.39	236.29	9,761.1	-417.3	-3,968.1	3,990.0	0.00	0.00	
11,100.0	0.39	236.29	9,861.1	-417.7	-3,968.7	3,990.6	0.00	0.00	
11,200.0	0.39	236.29	9,961.1	-418.1	-3,969.3	3,991.2	0.00	0.00	
11,300.0	0.39	236.29	10,061.1	-418.4	-3,969.8	3,991.8	0.00	0.00	
11,400.0	0.39	236.29	10,161.1	-418.8	-3,970.4	3,992.4	0.00	0.00	
11,500.0	0.39	236.29	10,261.1	-419.2	-3,971.0	3,993.0	0.00	0.00	
11,600.0	0.39	236.29	10,361.1	-419.6	-3,971.5	3,993.6	0.00	0.00	
11,602.9	0.39	236.29	10,364.0	-419.6	-3,971.6	3,993.7	0.00	0.00	ROLLINS_TVD - UWF10C-05 K04 BHL
11,700.0	0.39	236.29	10,461.1	-420.0	-3,972.1	3,994.2	0.00	0.00	
11,800.0	0.39	236.29	10,561.1	-420.3	-3,972.7	3,994.9	0.00	0.00	
11,849.9	0.39	236.29	10,611.0	-420.5	-3,973.0	3,995.2	0.00	0.00	COZZETTE_TVD
11,900.0	0.39	236.29	10,661.1	-420.7	-3,973.3	3,995.5	0.00	0.00	
12,000.0	0.39	236.29	10,761.1	-421.1	-3,973.8	3,996.1	0.00	0.00	
12,023.9	0.39	236.29	10,785.0	-421.2	-3,974.0	3,996.2	0.00	0.00	CORCORAN_TVD
12,100.0	0.39	236.29	10,861.1	-421.5	-3,974.4	3,996.7	0.00	0.00	
12,200.0	0.39	236.29	10,961.1	-421.9	-3,975.0	3,997.3	0.00	0.00	
12,300.0	0.39	236.29	11,061.1	-422.2	-3,975.5	3,997.9	0.00	0.00	
12,319.9	0.39	236.29	11,081.0	-422.3	-3,975.6	3,998.0	0.00	0.00	UPPER_SEGO_TVD
12,400.0	0.39	236.29	11,161.1	-422.6	-3,976.1	3,998.5	0.00	0.00	
12,500.0	0.39	236.29	11,261.1	-423.0	-3,976.7	3,999.1	0.00	0.00	
12,600.0	0.39	236.29	11,361.1	-423.4	-3,977.2	3,999.7	0.00	0.00	
12,700.0	0.39	236.29	11,461.1	-423.8	-3,977.8	4,000.3	0.00	0.00	
12,800.0	0.39	236.29	11,561.1	-424.1	-3,978.4	4,000.9	0.00	0.00	
12,900.0	0.39	236.29	11,661.1	-424.5	-3,978.9	4,001.5	0.00	0.00	
13,000.0	0.39	236.29	11,761.1	-424.9	-3,979.5	4,002.1	0.00	0.00	TD @ 13,000' MD

## Planning Report

<b>Database:</b>	USA EDM 5000 Multi Users DB	<b>Local Co-ordinate Reference:</b>	Well UWF10C-05 K04
<b>Company:</b>	EnCana Oil & Gas (USA) Inc	<b>TVD Reference:</b>	KB @ 8226.0ft (Original Well Elev)
<b>Project:</b>	North Piceance	<b>MD Reference:</b>	KB @ 8226.0ft (Original Well Elev)
<b>Site:</b>	K04 Pad	<b>North Reference:</b>	True
<b>Well:</b>	UWF10C-05 K04	<b>Survey Calculation Method:</b>	Minimum Curvature
<b>Wellbore:</b>	DD		
<b>Design:</b>	Plan #1		

Targets									
Target Name									
- hit/miss target	Dip Angle	Dip Dir.	TVD	+N/-S	+E/-W	Northing	Easting	Latitude	Longitude
- Shape	(°)	(°)	(ft)	(ft)	(ft)	(ft)	(ft)		
UWF10C-05 K04 BHL	0.00	0.00	10,364.0	-419.6	-3,971.6	1,669,958.99	2,242,753.36	39° 38' 31.39 N	108° 11' 21.67 W
- plan hits target center									
- Rectangle (sides W30.0 H50.0 D0.0)									
UWF10C-05 K04 TOG	0.00	0.00	6,870.0	-409.6	-3,956.6	1,669,968.53	2,242,768.61	39° 38' 31.49 N	108° 11' 21.48 W
- plan hits target center									
- Point									

Formations						
Measured Depth	Vertical Depth	Name	Lithology	Dip	Dip Direction	
(ft)	(ft)			(°)	(°)	
971.8	958.0	A_GROOVE_TVD				
1,136.5	1,110.0	B_GROOVE_TVD				
1,180.9	1,150.0	B_GROOVE_BASE_TVD				
2,100.7	1,903.0	GARDEN_GULCH_TVD				
3,426.5	2,963.0	WASATCH_FM_TVD				
5,909.1	4,948.0	WASATCH_G_TVD				
8,108.8	6,870.0	WILLIAMS_FORK_TVD				
11,602.9	10,364.0	ROLLINS_TVD				
11,849.9	10,611.0	COZZETTE_TVD				
12,023.9	10,785.0	CORCORAN_TVD				
12,319.9	11,081.0	UPPER_SEGO_TVD				

Plan Annotations				
Measured Depth	Vertical Depth	Local Coordinates		Comment
(ft)	(ft)	+N/-S (ft)	+E/-W (ft)	
300.0	300.0	0.0	0.0	KOP @ 300' MD
1,530.5	1,447.1	-39.4	-380.8	EOB @ 1530.5' MD; Inc=36.91°
6,878.3	5,722.9	-370.2	-3,575.8	Start 3° Drop @ 6878.3' MD
8,108.8	6,870.0	-409.6	-3,956.6	EOD @ 8108.8' MD
13,000.0	11,761.1	-424.9	-3,979.5	TD @ 13,000' MD