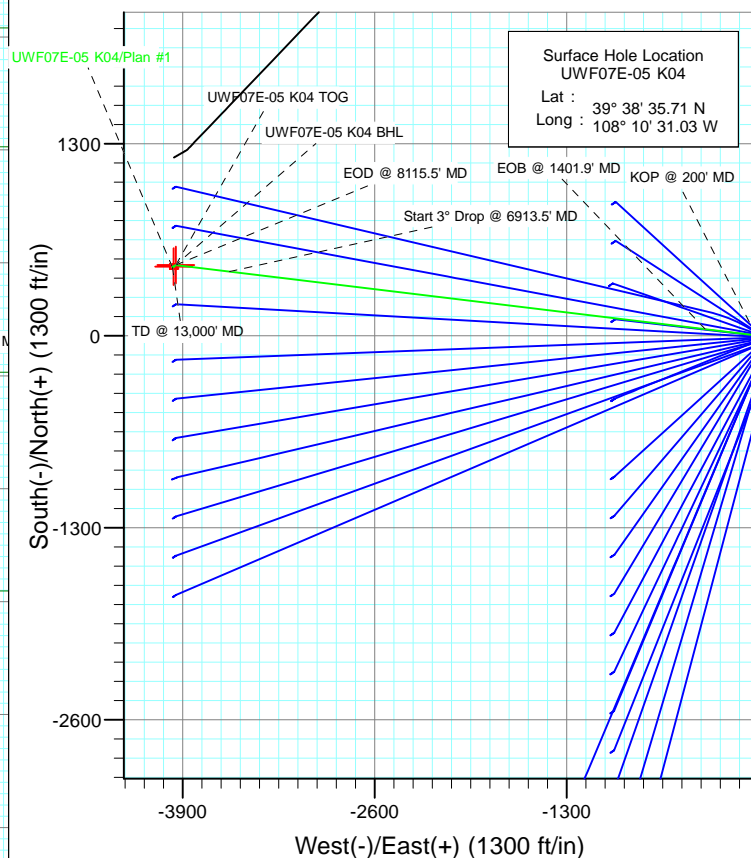


#### SECTION DETAILS

Sec	MD	Inc	Azi	TVD	+N/-S	+E/-W	Dleg	TFace	VSec	Target
1	0.0	0.00	0.00	0.0	0.0	0.0	0.00	0.00	0.0	
2	200.0	0.00	0.00	200.0	0.0	0.0	0.00	0.00	0.0	
3	1401.9	36.06	276.90	1324.1	44.0	-363.2	3.00	276.90	365.9	
4	6913.5	36.06	276.90	5779.9	433.8	-3583.8	0.00	0.00	3609.9	UWF07E-05 K04 TOG
5	8115.4	0.00	0.00	6904.0	477.8	-3947.0	3.00	180.00	3975.8	
6	9853.4	0.39	236.34	8642.0	474.5	-3952.0	0.02	236.34	3980.3	UWF07E-05 K04 BHL
7	11609.5	0.39	236.34	10398.0	467.8	-3962.0	0.00	0.00	3989.5	
8	13000.0	0.39	236.34	11788.5	462.5	-3970.0	0.00	0.00	3996.8	



Azimuths to True North  
Magnetic North: 10.34°

Magnetic Field  
Strength: 52205.4snT  
Dip Angle: 65.80°  
Date: 4/12/2012  
Model: IGRF2010

#### FORMATION TOP DETAILS

TVDPath	MDPath	Formation
972.0	994.7	A_GROOVE_TVD
1122.0	1162.2	B_GROOVE_TVD
1162.0	1208.2	B_GROOVE_BASE_TVD
1921.0	2140.2	GARDEN_GULCH_TVD
2973.0	3441.5	WASATCH_FM_TVD
4968.0	5909.2	WASATCH_G_TVD
6904.0	8115.4	WILLIAMS_FORK_TVD
10398.0	11609.5	ROLLINS_TVD
10644.0	11855.5	COZZETTE_TVD
10817.0	12028.5	CORCORAN_TVD
11116.0	12327.5	UPPER_SEGO_TVD

Plan #1  
UWF07E-05 K04  
KB @ 8226.0ft (Original Well Elev)  
North American Datum 1983  
Well UWF07E-05 K04, True North

Type	Target	Azimuth	Origin	N/S	E/W	From
TD	No Target (Freehand)	276.64	Slot	0.0	0.0	TVD
Name		TVD	+N/-S	+E/-W	Latitude	Longitude
UWF07E-05 K04 TOG		6904.0	477.8	-3947.0	39° 38' 40.43 N	108° 11' 21.49 W
UWF07E-05 K04 BHL		10398.0	467.8	-3962.0	39° 38' 40.33 N	108° 11' 21.68 W

## Planning Report

<b>Database:</b>	USA EDM 5000 Multi Users DB	<b>Local Co-ordinate Reference:</b>	Well UWF07E-05 K04
<b>Company:</b>	EnCana Oil & Gas (USA) Inc	<b>TVD Reference:</b>	KB @ 8226.0ft (Original Well Elev)
<b>Project:</b>	North Piceance	<b>MD Reference:</b>	KB @ 8226.0ft (Original Well Elev)
<b>Site:</b>	K04 Pad	<b>North Reference:</b>	True
<b>Well:</b>	UWF07E-05 K04	<b>Survey Calculation Method:</b>	Minimum Curvature
<b>Wellbore:</b>	DD		
<b>Design:</b>	Plan #1		

<b>Project</b>	North Piceance		
<b>Map System:</b>	US State Plane 1983	<b>System Datum:</b>	Mean Sea Level
<b>Geo Datum:</b>	North American Datum 1983		
<b>Map Zone:</b>	Colorado Central Zone		

Site		K04 Pad			
Site Position:		Northing:	1,636,938.27 ft	Latitude:	39° 33' 11.18 N
From:	Lat/Long	Easting:	2,263,572.45 ft	Longitude:	108° 6' 43.51 W
Position Uncertainty:	0.0 ft	Slot Radius:	13.200 in	Grid Convergence:	-1.65 °

Well	UWF07E-05 K04					
Well Position	+N/-S	0.0 ft	Northing:	1,670,278.95 ft	Latitude:	39° 38' 35.71 N
	+E/-W	0.0 ft	Easting:	2,246,725.89 ft	Longitude:	108° 10' 31.03 W
Position Uncertainty		0.0 ft	Wellhead Elevation:	ft	Ground Level:	8,193.0 ft

<b>Wellbore</b>	DD				
<b>Magnetics</b>	<b>Model Name</b>	<b>Sample Date</b>	<b>Declination (°)</b>	<b>Dip Angle (°)</b>	<b>Field Strength (nT)</b>
	IGRF2010	4/12/2012	10.34	65.80	52,205

<b>Design</b>	Plan #1			
<b>Audit Notes:</b>				
<b>Version:</b>	<b>Phase:</b>	PLAN	<b>Tie On Depth:</b>	0.0
<b>Vertical Section:</b>	<b>Depth From (TVD) (ft)</b>	<b>+N/-S (ft)</b>	<b>+E/-W (ft)</b>	<b>Direction (°)</b>
	0.0	0.0	0.0	276.64

<b>Plan Sections</b>										
Measured Depth (ft)	Inclination (°)	Azimuth (°)	Vertical Depth (ft)	+N/-S (ft)	+E/-W (ft)	Dogleg Rate (°/100ft)	Build Rate (°/100ft)	Turn Rate (°/100ft)	TFO (°)	Target
0.0	0.00	0.00	0.0	0.0	0.0	0.00	0.00	0.00	0.00	
200.0	0.00	0.00	200.0	0.0	0.0	0.00	0.00	0.00	0.00	
1,401.9	36.06	276.90	1,324.1	44.0	-363.2	3.00	3.00	0.00	276.90	
6,913.5	36.06	276.90	5,779.9	433.8	-3,583.8	0.00	0.00	0.00	0.00	
8,115.4	0.00	0.00	6,904.0	477.8	-3,947.0	3.00	-3.00	0.00	180.00	UWF07E-05 K04 TOC
9,853.4	0.39	236.34	8,642.0	474.5	-3,952.0	0.02	0.02	-7.12	236.34	
11,609.5	0.39	236.34	10,398.0	467.8	-3,962.0	0.00	0.00	0.00	0.00	UWF07E-05 K04 BHL
13,000.0	0.39	236.34	11,788.5	462.5	-3,970.0	0.00	0.00	0.00	0.00	

# Planning Report

<b>Database:</b>	USA EDM 5000 Multi Users DB	<b>Local Co-ordinate Reference:</b>	Well UWF07E-05 K04
<b>Company:</b>	EnCana Oil & Gas (USA) Inc	<b>TVD Reference:</b>	KB @ 8226.0ft (Original Well Elev)
<b>Project:</b>	North Piceance	<b>MD Reference:</b>	KB @ 8226.0ft (Original Well Elev)
<b>Site:</b>	K04 Pad	<b>North Reference:</b>	True
<b>Well:</b>	UWF07E-05 K04	<b>Survey Calculation Method:</b>	Minimum Curvature
<b>Wellbore:</b>	DD		
<b>Design:</b>	Plan #1		

## Planned Survey

Measured Depth (ft)	Inclination (°)	Azimuth (°)	Vertical Depth (ft)	+N/-S (ft)	+E/-W (ft)	Vertical Section (ft)	Dogleg Rate (°/100ft)	Build Rate (°/100ft)	Comments / Formations
0.0	0.00	0.00	0.0	0.0	0.0	0.0	0.00	0.00	
100.0	0.00	0.00	100.0	0.0	0.0	0.0	0.00	0.00	
200.0	0.00	0.00	200.0	0.0	0.0	0.0	0.00	0.00	KOP @ 200' MD
300.0	3.00	276.90	300.0	0.3	-2.6	2.6	3.00	3.00	
400.0	6.00	276.90	399.6	1.3	-10.4	10.5	3.00	3.00	
500.0	9.00	276.90	498.8	2.8	-23.3	23.5	3.00	3.00	
600.0	12.00	276.90	597.1	5.0	-41.4	41.7	3.00	3.00	
700.0	15.00	276.90	694.3	7.8	-64.6	65.1	3.00	3.00	
800.0	18.00	276.90	790.2	11.2	-92.8	93.5	3.00	3.00	
900.0	21.00	276.90	884.4	15.2	-125.9	126.9	3.00	3.00	
994.7	23.84	276.90	972.0	19.6	-161.8	163.0	3.00	3.00	A_GROOVE_TVD
1,000.0	24.00	276.90	976.8	19.8	-163.9	165.1	3.00	3.00	
1,100.0	27.00	276.90	1,067.1	25.0	-206.7	208.2	3.00	3.00	
1,162.2	28.87	276.90	1,122.0	28.5	-235.6	237.3	3.00	3.00	B_GROOVE_TVD
1,200.0	30.00	276.90	1,154.9	30.7	-254.0	255.9	3.00	3.00	
1,208.2	30.25	276.90	1,162.0	31.2	-258.1	260.0	3.00	3.00	B_GROOVE_BASE_TVD
1,300.0	33.00	276.90	1,240.2	37.0	-305.9	308.1	3.00	3.00	
1,400.0	36.00	276.90	1,322.6	43.8	-362.1	364.7	3.00	3.00	
1,401.9	36.06	276.90	1,324.1	44.0	-363.2	365.9	3.00	3.00	EOB @ 1401.9' MD
1,500.0	36.06	276.90	1,403.4	50.9	-420.5	423.6	0.00	0.00	
1,600.0	36.06	276.90	1,484.3	58.0	-479.0	482.5	0.00	0.00	
1,700.0	36.06	276.90	1,565.1	65.1	-537.4	541.3	0.00	0.00	
1,800.0	36.06	276.90	1,646.0	72.1	-595.8	600.2	0.00	0.00	
1,900.0	36.06	276.90	1,726.8	79.2	-654.3	659.0	0.00	0.00	
2,000.0	36.06	276.90	1,807.6	86.3	-712.7	717.9	0.00	0.00	
2,100.0	36.06	276.90	1,888.5	93.3	-771.1	776.8	0.00	0.00	
2,140.2	36.06	276.90	1,921.0	96.2	-794.6	800.4	0.00	0.00	GARDEN_GULCH_TVD
2,200.0	36.06	276.90	1,969.3	100.4	-829.6	835.6	0.00	0.00	
2,300.0	36.06	276.90	2,050.2	107.5	-888.0	894.5	0.00	0.00	
2,400.0	36.06	276.90	2,131.0	114.6	-946.4	953.3	0.00	0.00	
2,500.0	36.06	276.90	2,211.9	121.6	-1,004.9	1,012.2	0.00	0.00	
2,600.0	36.06	276.90	2,292.7	128.7	-1,063.3	1,071.0	0.00	0.00	
2,700.0	36.06	276.90	2,373.5	135.8	-1,121.7	1,129.9	0.00	0.00	
2,800.0	36.06	276.90	2,454.4	142.9	-1,180.2	1,188.8	0.00	0.00	
2,900.0	36.06	276.90	2,535.2	149.9	-1,238.6	1,247.6	0.00	0.00	
3,000.0	36.06	276.90	2,616.1	157.0	-1,297.0	1,306.5	0.00	0.00	
3,100.0	36.06	276.90	2,696.9	164.1	-1,355.5	1,365.3	0.00	0.00	
3,200.0	36.06	276.90	2,777.8	171.2	-1,413.9	1,424.2	0.00	0.00	
3,300.0	36.06	276.90	2,858.6	178.2	-1,472.3	1,483.1	0.00	0.00	
3,400.0	36.06	276.90	2,939.5	185.3	-1,530.8	1,541.9	0.00	0.00	
3,441.5	36.06	276.90	2,973.0	188.2	-1,555.0	1,566.3	0.00	0.00	WASATCH_FM_TVD
3,500.0	36.06	276.90	3,020.3	192.4	-1,589.2	1,600.8	0.00	0.00	
3,600.0	36.06	276.90	3,101.1	199.5	-1,647.6	1,659.6	0.00	0.00	
3,700.0	36.06	276.90	3,182.0	206.5	-1,706.1	1,718.5	0.00	0.00	
3,800.0	36.06	276.90	3,262.8	213.6	-1,764.5	1,777.3	0.00	0.00	
3,900.0	36.06	276.90	3,343.7	220.7	-1,822.9	1,836.2	0.00	0.00	
4,000.0	36.06	276.90	3,424.5	227.7	-1,881.4	1,895.1	0.00	0.00	
4,100.0	36.06	276.90	3,505.4	234.8	-1,939.8	1,953.9	0.00	0.00	
4,200.0	36.06	276.90	3,586.2	241.9	-1,998.2	2,012.8	0.00	0.00	
4,300.0	36.06	276.90	3,667.0	249.0	-2,056.6	2,071.6	0.00	0.00	
4,400.0	36.06	276.90	3,747.9	256.0	-2,115.1	2,130.5	0.00	0.00	
4,500.0	36.06	276.90	3,828.7	263.1	-2,173.5	2,189.4	0.00	0.00	

# Planning Report

<b>Database:</b>	USA EDM 5000 Multi Users DB	<b>Local Co-ordinate Reference:</b>	Well UWF07E-05 K04
<b>Company:</b>	EnCana Oil & Gas (USA) Inc	<b>TVD Reference:</b>	KB @ 8226.0ft (Original Well Elev)
<b>Project:</b>	North Piceance	<b>MD Reference:</b>	KB @ 8226.0ft (Original Well Elev)
<b>Site:</b>	K04 Pad	<b>North Reference:</b>	True
<b>Well:</b>	UWF07E-05 K04	<b>Survey Calculation Method:</b>	Minimum Curvature
<b>Wellbore:</b>	DD		
<b>Design:</b>	Plan #1		

Planned Survey									
Measured Depth (ft)	Inclination (°)	Azimuth (°)	Vertical Depth (ft)	+N/-S (ft)	+E/-W (ft)	Vertical Section (ft)	Dogleg Rate (°/100ft)	Build Rate (°/100ft)	Comments / Formations
4,600.0	36.06	276.90	3,909.6	270.2	-2,231.9	2,248.2	0.00	0.00	
4,700.0	36.06	276.90	3,990.4	277.3	-2,290.4	2,307.1	0.00	0.00	
4,800.0	36.06	276.90	4,071.3	284.3	-2,348.8	2,365.9	0.00	0.00	
4,900.0	36.06	276.90	4,152.1	291.4	-2,407.2	2,424.8	0.00	0.00	
5,000.0	36.06	276.90	4,232.9	298.5	-2,465.7	2,483.7	0.00	0.00	
5,100.0	36.06	276.90	4,313.8	305.6	-2,524.1	2,542.5	0.00	0.00	
5,200.0	36.06	276.90	4,394.6	312.6	-2,582.5	2,601.4	0.00	0.00	
5,300.0	36.06	276.90	4,475.5	319.7	-2,641.0	2,660.2	0.00	0.00	
5,400.0	36.06	276.90	4,556.3	326.8	-2,699.4	2,719.1	0.00	0.00	
5,500.0	36.06	276.90	4,637.2	333.8	-2,757.8	2,777.9	0.00	0.00	
5,600.0	36.06	276.90	4,718.0	340.9	-2,816.3	2,836.8	0.00	0.00	
5,700.0	36.06	276.90	4,798.8	348.0	-2,874.7	2,895.7	0.00	0.00	
5,800.0	36.06	276.90	4,879.7	355.1	-2,933.1	2,954.5	0.00	0.00	
5,900.0	36.06	276.90	4,960.5	362.1	-2,991.6	3,013.4	0.00	0.00	
5,909.2	36.06	276.90	4,968.0	362.8	-2,997.0	3,018.8	0.00	0.00	WASATCH_G_TVD
6,000.0	36.06	276.90	5,041.4	369.2	-3,050.0	3,072.2	0.00	0.00	
6,100.0	36.06	276.90	5,122.2	376.3	-3,108.4	3,131.1	0.00	0.00	
6,200.0	36.06	276.90	5,203.1	383.4	-3,166.9	3,190.0	0.00	0.00	
6,300.0	36.06	276.90	5,283.9	390.4	-3,225.3	3,248.8	0.00	0.00	
6,400.0	36.06	276.90	5,364.7	397.5	-3,283.7	3,307.7	0.00	0.00	
6,500.0	36.06	276.90	5,445.6	404.6	-3,342.2	3,366.5	0.00	0.00	
6,600.0	36.06	276.90	5,526.4	411.7	-3,400.6	3,425.4	0.00	0.00	
6,700.0	36.06	276.90	5,607.3	418.7	-3,459.0	3,484.2	0.00	0.00	
6,800.0	36.06	276.90	5,688.1	425.8	-3,517.5	3,543.1	0.00	0.00	
6,900.0	36.06	276.90	5,769.0	432.9	-3,575.9	3,602.0	0.00	0.00	
6,913.5	36.06	276.90	5,779.9	433.8	-3,583.8	3,609.9	0.00	0.00	Start 3° Drop @ 6913.5' MD
7,000.0	33.46	276.90	5,850.9	439.8	-3,632.7	3,659.2	3.00	-3.00	
7,100.0	30.46	276.90	5,935.8	446.1	-3,685.3	3,712.1	3.00	-3.00	
7,200.0	27.46	276.90	6,023.2	451.9	-3,733.3	3,760.6	3.00	-3.00	
7,300.0	24.46	276.90	6,113.1	457.2	-3,776.8	3,804.3	3.00	-3.00	
7,400.0	21.46	276.90	6,205.2	461.9	-3,815.5	3,843.3	3.00	-3.00	
7,500.0	18.46	276.90	6,299.2	466.0	-3,849.4	3,877.5	3.00	-3.00	
7,600.0	15.46	276.90	6,394.8	469.5	-3,878.4	3,906.7	3.00	-3.00	
7,700.0	12.46	276.90	6,491.9	472.4	-3,902.3	3,930.8	3.00	-3.00	
7,800.0	9.46	276.90	6,590.0	474.7	-3,921.2	3,949.8	3.00	-3.00	
7,900.0	6.46	276.90	6,689.1	476.3	-3,935.0	3,963.6	3.00	-3.00	
8,000.0	3.46	276.90	6,788.7	477.4	-3,943.5	3,972.3	3.00	-3.00	
8,100.0	0.46	276.90	6,888.6	477.8	-3,946.9	3,975.7	3.00	-3.00	
8,115.4	0.00	0.00	6,904.0	477.8	-3,947.0	3,975.8	3.00	-3.00	EOD @ 8115.5' MD - WILLIAMS_FORK_TVD -
8,200.0	0.02	236.34	6,988.6	477.8	-3,947.0	3,975.8	0.02	0.02	
8,300.0	0.04	236.34	7,088.6	477.8	-3,947.1	3,975.8	0.02	0.02	
8,400.0	0.06	236.34	7,188.6	477.7	-3,947.1	3,975.9	0.02	0.02	
8,500.0	0.09	236.34	7,288.6	477.6	-3,947.2	3,976.0	0.02	0.02	
8,600.0	0.11	236.34	7,388.6	477.5	-3,947.4	3,976.1	0.02	0.02	
8,700.0	0.13	236.34	7,488.6	477.4	-3,947.6	3,976.3	0.02	0.02	
8,800.0	0.16	236.34	7,588.6	477.3	-3,947.8	3,976.5	0.02	0.02	
8,900.0	0.18	236.34	7,688.6	477.1	-3,948.0	3,976.7	0.02	0.02	
9,000.0	0.20	236.34	7,788.6	476.9	-3,948.3	3,977.0	0.02	0.02	
9,100.0	0.22	236.34	7,888.6	476.7	-3,948.6	3,977.2	0.02	0.02	
9,200.0	0.25	236.34	7,988.6	476.5	-3,948.9	3,977.6	0.02	0.02	
9,300.0	0.27	236.34	8,088.6	476.3	-3,949.3	3,977.9	0.02	0.02	
9,400.0	0.29	236.34	8,188.6	476.0	-3,949.7	3,978.3	0.02	0.02	

# Planning Report

<b>Database:</b>	USA EDM 5000 Multi Users DB	<b>Local Co-ordinate Reference:</b>	Well UWF07E-05 K04
<b>Company:</b>	EnCana Oil & Gas (USA) Inc	<b>TVD Reference:</b>	KB @ 8226.0ft (Original Well Elev)
<b>Project:</b>	North Piceance	<b>MD Reference:</b>	KB @ 8226.0ft (Original Well Elev)
<b>Site:</b>	K04 Pad	<b>North Reference:</b>	True
<b>Well:</b>	UWF07E-05 K04	<b>Survey Calculation Method:</b>	Minimum Curvature
<b>Wellbore:</b>	DD		
<b>Design:</b>	Plan #1		

Planned Survey									
Measured Depth (ft)	Inclination (°)	Azimuth (°)	Vertical Depth (ft)	+N/-S (ft)	+E/-W (ft)	Vertical Section (ft)	Dogleg Rate (°/100ft)	Build Rate (°/100ft)	Comments / Formations
9,500.0	0.31	236.34	8,288.6	475.7	-3,950.2	3,978.7	0.02	0.02	
9,600.0	0.34	236.34	8,388.6	475.4	-3,950.6	3,979.1	0.02	0.02	
9,700.0	0.36	236.34	8,488.6	475.0	-3,951.1	3,979.6	0.02	0.02	
9,800.0	0.38	236.34	8,588.6	474.7	-3,951.7	3,980.1	0.02	0.02	
9,853.4	0.39	236.34	8,642.0	474.5	-3,952.0	3,980.3	0.02	0.02	
9,900.0	0.39	236.34	8,688.6	474.3	-3,952.2	3,980.6	0.00	0.00	
10,000.0	0.39	236.34	8,788.6	473.9	-3,952.8	3,981.1	0.00	0.00	
10,100.0	0.39	236.34	8,888.6	473.5	-3,953.4	3,981.6	0.00	0.00	
10,200.0	0.39	236.34	8,988.6	473.2	-3,954.0	3,982.2	0.00	0.00	
10,300.0	0.39	236.34	9,088.6	472.8	-3,954.5	3,982.7	0.00	0.00	
10,400.0	0.39	236.34	9,188.6	472.4	-3,955.1	3,983.2	0.00	0.00	
10,500.0	0.39	236.34	9,288.6	472.0	-3,955.7	3,983.7	0.00	0.00	
10,600.0	0.39	236.34	9,388.6	471.6	-3,956.3	3,984.3	0.00	0.00	
10,700.0	0.39	236.34	9,488.6	471.3	-3,956.8	3,984.8	0.00	0.00	
10,800.0	0.39	236.34	9,588.6	470.9	-3,957.4	3,985.3	0.00	0.00	
10,900.0	0.39	236.34	9,688.6	470.5	-3,958.0	3,985.8	0.00	0.00	
11,000.0	0.39	236.34	9,788.6	470.1	-3,958.5	3,986.3	0.00	0.00	
11,100.0	0.39	236.34	9,888.6	469.7	-3,959.1	3,986.9	0.00	0.00	
11,200.0	0.39	236.34	9,988.6	469.3	-3,959.7	3,987.4	0.00	0.00	
11,300.0	0.39	236.34	10,088.5	469.0	-3,960.3	3,987.9	0.00	0.00	
11,400.0	0.39	236.34	10,188.5	468.6	-3,960.8	3,988.4	0.00	0.00	
11,500.0	0.39	236.34	10,288.5	468.2	-3,961.4	3,989.0	0.00	0.00	
11,600.0	0.39	236.34	10,388.5	467.8	-3,962.0	3,989.5	0.00	0.00	
11,609.5	0.39	236.34	10,398.0	467.8	-3,962.0	3,989.5	0.00	0.00	ROLLINS_TVD - UWF07E-05 K04 BHL
11,700.0	0.39	236.34	10,488.5	467.4	-3,962.6	3,990.0	0.00	0.00	
11,800.0	0.39	236.34	10,588.5	467.1	-3,963.1	3,990.5	0.00	0.00	
11,855.5	0.39	236.34	10,644.0	466.8	-3,963.4	3,990.8	0.00	0.00	COZZETTE_TVD
11,900.0	0.39	236.34	10,688.5	466.7	-3,963.7	3,991.1	0.00	0.00	
12,000.0	0.39	236.34	10,788.5	466.3	-3,964.3	3,991.6	0.00	0.00	
12,028.5	0.39	236.34	10,817.0	466.2	-3,964.4	3,991.7	0.00	0.00	CORCORAN_TVD
12,100.0	0.39	236.34	10,888.5	465.9	-3,964.8	3,992.1	0.00	0.00	
12,200.0	0.39	236.34	10,988.5	465.5	-3,965.4	3,992.6	0.00	0.00	
12,300.0	0.39	236.34	11,088.5	465.2	-3,966.0	3,993.2	0.00	0.00	
12,327.5	0.39	236.34	11,116.0	465.0	-3,966.1	3,993.3	0.00	0.00	UPPER_SEGO_TVD
12,400.0	0.39	236.34	11,188.5	464.8	-3,966.6	3,993.7	0.00	0.00	
12,500.0	0.39	236.34	11,288.5	464.4	-3,967.1	3,994.2	0.00	0.00	
12,600.0	0.39	236.34	11,388.5	464.0	-3,967.7	3,994.7	0.00	0.00	
12,700.0	0.39	236.34	11,488.5	463.6	-3,968.3	3,995.3	0.00	0.00	
12,800.0	0.39	236.34	11,588.5	463.2	-3,968.9	3,995.8	0.00	0.00	
12,900.0	0.39	236.34	11,688.5	462.9	-3,969.4	3,996.3	0.00	0.00	
13,000.0	0.39	236.34	11,788.5	462.5	-3,970.0	3,996.8	0.00	0.00	TD @ 13,000' MD

## Planning Report

<b>Database:</b>	USA EDM 5000 Multi Users DB	<b>Local Co-ordinate Reference:</b>	Well UWF07E-05 K04
<b>Company:</b>	EnCana Oil & Gas (USA) Inc	<b>TVD Reference:</b>	KB @ 8226.0ft (Original Well Elev)
<b>Project:</b>	North Piceance	<b>MD Reference:</b>	KB @ 8226.0ft (Original Well Elev)
<b>Site:</b>	K04 Pad	<b>North Reference:</b>	True
<b>Well:</b>	UWF07E-05 K04	<b>Survey Calculation Method:</b>	Minimum Curvature
<b>Wellbore:</b>	DD		
<b>Design:</b>	Plan #1		

Targets									
Target Name									
- hit/miss target	Dip Angle	Dip Dir.	TVD	+N/-S	+E/-W	Northing	Easting	Latitude	Longitude
- Shape	(°)	(°)	(ft)	(ft)	(ft)	(ft)	(ft)		
UWF07E-05 K04 BHL	0.00	0.00	10,398.0	467.8	-3,962.0	1,670,863.19	2,242,779.35	39° 38' 40.33 N	108° 11' 21.68 W
- plan hits target center									
- Rectangle (sides W30.0 H50.0 D0.0)									
UWF07E-05 K04 TOG	0.00	0.00	6,904.0	477.8	-3,947.0	1,670,872.76	2,242,794.67	39° 38' 40.43 N	108° 11' 21.49 W
- plan hits target center									
- Point									

Formations						
Measured Depth	Vertical Depth	Name	Lithology	Dip	Dip Direction	
(ft)	(ft)			(°)	(°)	
994.7	972.0	A_GROOVE_TVD				
1,162.2	1,122.0	B_GROOVE_TVD				
1,208.2	1,162.0	B_GROOVE_BASE_TVD				
2,140.2	1,921.0	GARDEN_GULCH_TVD				
3,441.5	2,973.0	WASATCH_FM_TVD				
5,909.2	4,968.0	WASATCH_G_TVD				
8,115.4	6,904.0	WILLIAMS_FORK_TVD				
11,609.5	10,398.0	ROLLINS_TVD				
11,855.5	10,644.0	COZZETTE_TVD				
12,028.5	10,817.0	CORCORAN_TVD				
12,327.5	11,116.0	UPPER_SEGO_TVD				

Plan Annotations				
Measured Depth	Vertical Depth	Local Coordinates		Comment
(ft)	(ft)	+N/-S (ft)	+E/-W (ft)	
200.0	200.0	0.0	0.0	KOP @ 200' MD
1,401.9	1,324.1	44.0	-363.2	EOB @ 1401.9' MD
6,913.5	5,779.9	433.8	-3,583.8	Start 3° Drop @ 6913.5' MD
8,115.4	6,904.0	477.8	-3,947.0	EOD @ 8115.5' MD
13,000.0	11,788.5	462.5	-3,970.0	TD @ 13,000' MD