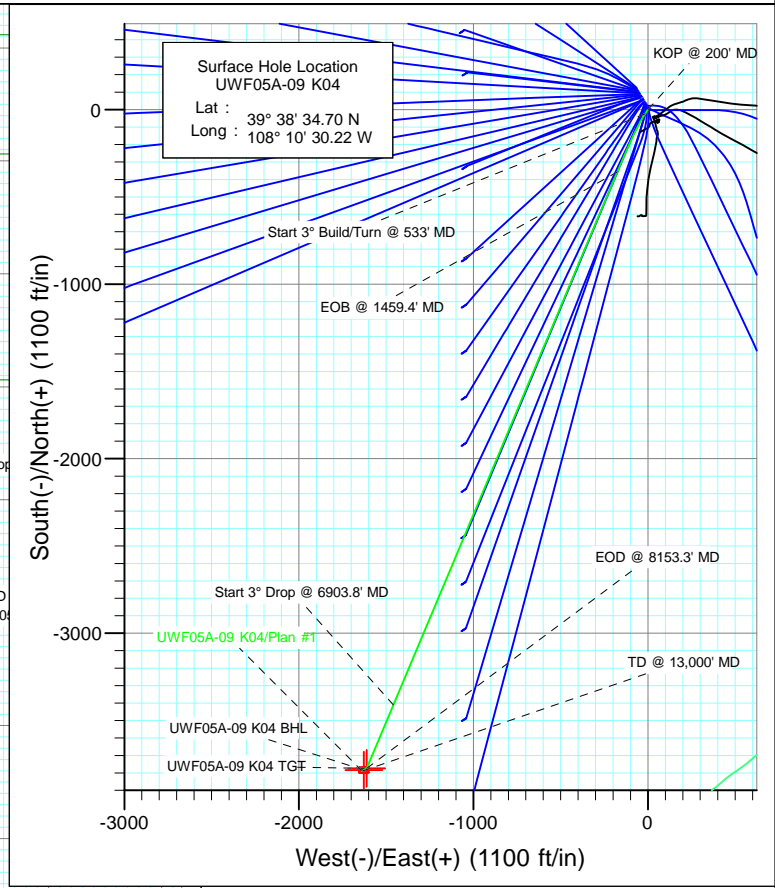


SECTION DETAILS

Sec	MD	Inc	Azi	TVD	+N-/S	+E-/W	Dleg	TFace	V Sect	Target
1	0.0	0.00	0.00	0.0	0.0	0.0	0.00	0.00	0.0	
2	200.0	0.00	0.00	200.0	0.0	0.0	0.00	0.00	0.0	
3	533.3	10.00	215.00	531.6	-23.8	-16.6	3.00	215.00	28.4	
4	1459.4	37.49	202.79	1371.6	-355.9	-175.0	3.00	-16.03	396.1	
5	6903.8	37.49	202.79	5691.7	-3410.6	-1458.3	0.00	0.00	3709.3	
6	8153.3	0.00	0.00	6854.0	-3774.2	-1611.1	3.00	180.00	4103.7	UWF05A-09 K04 TGT
7	9949.8	0.43	239.66	8650.5	-3777.6	-1617.0	0.02	239.66	4109.1	
8	11657.4	0.43	239.66	10358.0	-3784.2	-1628.1	0.00	0.00	4119.5	UWF05A-09 K04 BHL
9	13000.0	0.43	239.66	11700.6	-3789.3	-1636.9	0.00	0.00	4127.7	



T M

Azimuths to True North
 Magnetic North: 10.34°

Magnetic Field
 Strength: 52205.3snT
 Dip Angle: 65.80°
 Date: 4/12/2012
 Model: IGRF2010

FORMATION TOP DETAILS

TVDPath	MDPath	Formation
932.0	950.9	A_GROOVE_TVD
1094.0	1129.7	B_GROOVE_TVD
1134.0	1175.6	B_GROOVE_BASE_TVD
1882.0	2102.6	GARDEN_GULCH_TVD
2938.0	3433.5	WASATCH_FM_TVD
4939.0	5955.2	WASATCH_G_TVD
6854.0	8153.3	WILLIAMS_FORK_TVD
10358.0	11657.4	ROLLINS_TVD
10645.0	11944.4	COZZETTE_TVD
10817.0	12116.4	CORCORAN_TVD
11107.0	12406.4	UPPER_SEGO_TVD

Plan #1
 UWF05A-09 K04
 KB @ 8226.0ft (Original Well Elev)
 North American Datum 1983
 Well UWF05A-09 K04, True North

Type Target	Target	Azimuth	Origin Type	N/S	E/W	From TVD
	UWF05A-09 K04 BHL	203.28	Slot	0.0	0.0	0.0
Name	TVD	+N-/S	+E-/W	Latitude	Longitude	
UWF05A-09 K04 TGT	6854.0	-3774.2	-1611.1	39° 37' 57.40 N	108° 10' 50.81 W	
UWF05A-09 K04 BHL	10358.0	-3784.2	-1628.1	39° 37' 57.30 N	108° 10' 51.03 W	

Planning Report

Database:	USA EDM 5000 Multi Users DB	Local Co-ordinate Reference:	Well UWF05A-09 K04
Company:	EnCana Oil & Gas (USA) Inc	TVD Reference:	KB @ 8226.0ft (Original Well Elev)
Project:	North Piceance	MD Reference:	KB @ 8226.0ft (Original Well Elev)
Site:	K04 Pad	North Reference:	True
Well:	UWF05A-09 K04	Survey Calculation Method:	Minimum Curvature
Wellbore:	DD		
Design:	Plan #1		

Project	North Piceance		
Map System:	US State Plane 1983	System Datum:	Mean Sea Level
Geo Datum:	North American Datum 1983		
Map Zone:	Colorado Central Zone		

Site	K04 Pad				
Site Position:		Northing:	1,636,938.27 ft	Latitude:	39° 33' 11.18 N
From:	Lat/Long	Easting:	2,263,572.45 ft	Longitude:	108° 6' 43.51 W
Position Uncertainty:	0.0 ft	Slot Radius:	13.200 in	Grid Convergence:	-1.65 °

Well	UWF05A-09 K04					
Well Position	+N/-S	0.0 ft	Northing:	1,670,174.94 ft	Latitude:	39° 38' 34.70 N
	+E/-W	0.0 ft	Easting:	2,246,786.22 ft	Longitude:	108° 10' 30.22 W
Position Uncertainty		0.0 ft	Wellhead Elevation:	ft	Ground Level:	8,193.0 ft

Wellbore	DD				
Magnetics	Model Name	Sample Date	Declination	Dip Angle	Field Strength
	IGRF2010	4/12/2012	(°)	(°)	(nT)
			10.34	65.80	52,205

Design	Plan #1			
Audit Notes:				
Version:	Phase:	PLAN	Tie On Depth:	0.0
Vertical Section:	Depth From (TVD)	+N/-S	+E/-W	Direction
	(ft)	(ft)	(ft)	(°)
	0.0	0.0	0.0	203.28

Plan Sections										
Measured Depth (ft)	Inclination (°)	Azimuth (°)	Vertical Depth (ft)	+N/-S (ft)	+E/-W (ft)	Dogleg Rate (°/100ft)	Build Rate (°/100ft)	Turn Rate (°/100ft)	TFO (°)	Target
0.0	0.00	0.00	0.0	0.0	0.0	0.00	0.00	0.00	0.00	
200.0	0.00	0.00	200.0	0.0	0.0	0.00	0.00	0.00	0.00	
533.3	10.00	215.00	531.6	-23.8	-16.6	3.00	3.00	0.00	215.00	
1,459.4	37.49	202.79	1,371.6	-355.9	-175.0	3.00	2.97	-1.32	-16.03	
6,903.8	37.49	202.79	5,691.7	-3,410.6	-1,458.3	0.00	0.00	0.00	0.00	
8,153.3	0.00	0.00	6,854.0	-3,774.2	-1,611.1	3.00	-3.00	0.00	180.00	UWF05A-09 K04 TG1
9,949.8	0.43	239.66	8,650.5	-3,777.6	-1,617.0	0.02	0.02	-6.70	239.66	
11,657.4	0.43	239.66	10,358.0	-3,784.2	-1,628.1	0.00	0.00	0.00	0.00	UWF05A-09 K04 BHL
13,000.0	0.43	239.66	11,700.6	-3,789.3	-1,636.9	0.00	0.00	0.00	0.00	

Planning Report

Database:	USA EDM 5000 Multi Users DB	Local Co-ordinate Reference:	Well UWF05A-09 K04
Company:	EnCana Oil & Gas (USA) Inc	TVD Reference:	KB @ 8226.0ft (Original Well Elev)
Project:	North Piceance	MD Reference:	KB @ 8226.0ft (Original Well Elev)
Site:	K04 Pad	North Reference:	True
Well:	UWF05A-09 K04	Survey Calculation Method:	Minimum Curvature
Wellbore:	DD		
Design:	Plan #1		

Planned Survey									
Measured Depth (ft)	Inclination (°)	Azimuth (°)	Vertical Depth (ft)	+N/-S (ft)	+E/-W (ft)	Vertical Section (ft)	Dogleg Rate (°/100ft)	Build Rate (°/100ft)	Comments / Formations
0.0	0.00	0.00	0.0	0.0	0.0	0.0	0.00	0.00	
100.0	0.00	0.00	100.0	0.0	0.0	0.0	0.00	0.00	
200.0	0.00	0.00	200.0	0.0	0.0	0.0	0.00	0.00	KOP @ 200' MD
300.0	3.00	215.00	300.0	-2.1	-1.5	2.6	3.00	3.00	
400.0	6.00	215.00	399.6	-8.6	-6.0	10.2	3.00	3.00	
500.0	9.00	215.00	498.8	-19.3	-13.5	23.0	3.00	3.00	
533.3	10.00	215.00	531.6	-23.8	-16.6	28.4	3.00	3.00	Start 3° Build/Turn @ 533' MD
600.0	11.93	212.33	597.1	-34.3	-23.6	40.9	3.00	2.90	
700.0	14.87	209.62	694.4	-54.2	-35.5	63.9	3.00	2.93	
800.0	17.82	207.79	790.3	-78.9	-49.0	91.9	3.00	2.96	
900.0	20.79	206.46	884.7	-108.4	-64.1	124.9	3.00	2.97	
950.9	22.31	205.92	932.0	-125.1	-72.3	143.5	3.00	2.97	A_GROOVE_TVD
1,000.0	23.77	205.46	977.2	-142.5	-80.6	162.7	3.00	2.98	
1,100.0	26.75	204.67	1,067.6	-181.1	-98.7	205.4	3.00	2.98	
1,129.7	27.63	204.46	1,094.0	-193.4	-104.3	218.9	3.00	2.98	B_GROOVE_TVD
1,175.1	28.99	204.17	1,134.0	-213.1	-113.2	240.5	3.00	2.98	B_GROOVE_BASE_TVD
1,200.0	29.73	204.02	1,155.7	-224.2	-118.2	252.7	3.00	2.99	
1,300.0	32.72	203.48	1,241.2	-271.7	-139.0	304.5	3.00	2.99	
1,400.0	35.71	203.03	1,323.9	-323.3	-161.2	360.7	3.00	2.99	
1,459.4	37.49	202.79	1,371.6	-355.9	-175.0	396.1	3.00	2.99	EOB @ 1459.4' MD
1,500.0	37.49	202.79	1,403.8	-378.7	-184.6	420.9	0.00	0.00	
1,600.0	37.49	202.79	1,483.1	-434.8	-208.2	481.7	0.00	0.00	
1,700.0	37.49	202.79	1,562.5	-491.0	-231.7	542.6	0.00	0.00	
1,800.0	37.49	202.79	1,641.8	-547.1	-255.3	603.4	0.00	0.00	
1,900.0	37.49	202.79	1,721.2	-603.2	-278.9	664.3	0.00	0.00	
2,000.0	37.49	202.79	1,800.5	-659.3	-302.4	725.1	0.00	0.00	
2,100.0	37.49	202.79	1,879.9	-715.4	-326.0	786.0	0.00	0.00	
2,102.6	37.49	202.79	1,882.0	-716.9	-326.6	787.6	0.00	0.00	GARDEN_GULCH_TVD
2,200.0	37.49	202.79	1,959.2	-771.5	-349.6	846.8	0.00	0.00	
2,300.0	37.49	202.79	2,038.6	-827.6	-373.2	907.7	0.00	0.00	
2,400.0	37.49	202.79	2,117.9	-883.7	-396.7	968.5	0.00	0.00	
2,500.0	37.49	202.79	2,197.3	-939.8	-420.3	1,029.4	0.00	0.00	
2,600.0	37.49	202.79	2,276.6	-995.9	-443.9	1,090.3	0.00	0.00	
2,700.0	37.49	202.79	2,356.0	-1,052.0	-467.4	1,151.1	0.00	0.00	
2,800.0	37.49	202.79	2,435.3	-1,108.1	-491.0	1,212.0	0.00	0.00	
2,900.0	37.49	202.79	2,514.7	-1,164.2	-514.6	1,272.8	0.00	0.00	
3,000.0	37.49	202.79	2,594.1	-1,220.3	-538.2	1,333.7	0.00	0.00	
3,100.0	37.49	202.79	2,673.4	-1,276.4	-561.7	1,394.5	0.00	0.00	
3,200.0	37.49	202.79	2,752.8	-1,332.5	-585.3	1,455.4	0.00	0.00	
3,300.0	37.49	202.79	2,832.1	-1,388.7	-608.9	1,516.2	0.00	0.00	
3,400.0	37.49	202.79	2,911.5	-1,444.8	-632.4	1,577.1	0.00	0.00	
3,433.5	37.49	202.79	2,938.0	-1,463.5	-640.3	1,597.5	0.00	0.00	WASATCH_FM_TVD
3,500.0	37.49	202.79	2,990.8	-1,500.9	-656.0	1,637.9	0.00	0.00	
3,600.0	37.49	202.79	3,070.2	-1,557.0	-679.6	1,698.8	0.00	0.00	
3,700.0	37.49	202.79	3,149.5	-1,613.1	-703.2	1,759.7	0.00	0.00	
3,800.0	37.49	202.79	3,228.9	-1,669.2	-726.7	1,820.5	0.00	0.00	
3,900.0	37.49	202.79	3,308.2	-1,725.3	-750.3	1,881.4	0.00	0.00	
4,000.0	37.49	202.79	3,387.6	-1,781.4	-773.9	1,942.2	0.00	0.00	
4,100.0	37.49	202.79	3,466.9	-1,837.5	-797.4	2,003.1	0.00	0.00	
4,200.0	37.49	202.79	3,546.3	-1,893.6	-821.0	2,063.9	0.00	0.00	
4,300.0	37.49	202.79	3,625.6	-1,949.7	-844.6	2,124.8	0.00	0.00	
4,400.0	37.49	202.79	3,705.0	-2,005.8	-868.2	2,185.6	0.00	0.00	

Planning Report

Database:	USA EDM 5000 Multi Users DB	Local Co-ordinate Reference:	Well UWF05A-09 K04
Company:	EnCana Oil & Gas (USA) Inc	TVD Reference:	KB @ 8226.0ft (Original Well Elev)
Project:	North Piceance	MD Reference:	KB @ 8226.0ft (Original Well Elev)
Site:	K04 Pad	North Reference:	True
Well:	UWF05A-09 K04	Survey Calculation Method:	Minimum Curvature
Wellbore:	DD		
Design:	Plan #1		

Planned Survey									
Measured Depth (ft)	Inclination (°)	Azimuth (°)	Vertical Depth (ft)	+N/-S (ft)	+E/-W (ft)	Vertical Section (ft)	Dogleg Rate (°/100ft)	Build Rate (°/100ft)	Comments / Formations
4,500.0	37.49	202.79	3,784.3	-2,061.9	-891.7	2,246.5	0.00	0.00	
4,600.0	37.49	202.79	3,863.7	-2,118.0	-915.3	2,307.3	0.00	0.00	
4,700.0	37.49	202.79	3,943.0	-2,174.1	-938.9	2,368.2	0.00	0.00	
4,800.0	37.49	202.79	4,022.4	-2,230.2	-962.5	2,429.1	0.00	0.00	
4,900.0	37.49	202.79	4,101.7	-2,286.4	-986.0	2,489.9	0.00	0.00	
5,000.0	37.49	202.79	4,181.1	-2,342.5	-1,009.6	2,550.8	0.00	0.00	
5,100.0	37.49	202.79	4,260.4	-2,398.6	-1,033.2	2,611.6	0.00	0.00	
5,200.0	37.49	202.79	4,339.8	-2,454.7	-1,056.7	2,672.5	0.00	0.00	
5,300.0	37.49	202.79	4,419.1	-2,510.8	-1,080.3	2,733.3	0.00	0.00	
5,400.0	37.49	202.79	4,498.5	-2,566.9	-1,103.9	2,794.2	0.00	0.00	
5,500.0	37.49	202.79	4,577.8	-2,623.0	-1,127.5	2,855.0	0.00	0.00	
5,600.0	37.49	202.79	4,657.2	-2,679.1	-1,151.0	2,915.9	0.00	0.00	
5,700.0	37.49	202.79	4,736.5	-2,735.2	-1,174.6	2,976.7	0.00	0.00	
5,800.0	37.49	202.79	4,815.9	-2,791.3	-1,198.2	3,037.6	0.00	0.00	
5,900.0	37.49	202.79	4,895.2	-2,847.4	-1,221.7	3,098.5	0.00	0.00	
5,955.2	37.49	202.79	4,939.0	-2,878.4	-1,234.7	3,132.0	0.00	0.00	WASATCH_G_TVD
6,000.0	37.49	202.79	4,974.6	-2,903.5	-1,245.3	3,159.3	0.00	0.00	
6,100.0	37.49	202.79	5,053.9	-2,959.6	-1,268.9	3,220.2	0.00	0.00	
6,200.0	37.49	202.79	5,133.3	-3,015.7	-1,292.5	3,281.0	0.00	0.00	
6,300.0	37.49	202.79	5,212.6	-3,071.8	-1,316.0	3,341.9	0.00	0.00	
6,400.0	37.49	202.79	5,292.0	-3,127.9	-1,339.6	3,402.7	0.00	0.00	
6,500.0	37.49	202.79	5,371.3	-3,184.1	-1,363.2	3,463.6	0.00	0.00	
6,600.0	37.49	202.79	5,450.7	-3,240.2	-1,386.7	3,524.4	0.00	0.00	
6,700.0	37.49	202.79	5,530.0	-3,296.3	-1,410.3	3,585.3	0.00	0.00	
6,800.0	37.49	202.79	5,609.4	-3,352.4	-1,433.9	3,646.1	0.00	0.00	
6,900.0	37.49	202.79	5,688.7	-3,408.5	-1,457.5	3,707.0	0.00	0.00	
6,903.8	37.49	202.79	5,691.7	-3,410.6	-1,458.3	3,709.3	0.00	0.00	Start 3° Drop @ 6903.8' MD
7,000.0	34.60	202.79	5,769.5	-3,462.8	-1,480.3	3,765.9	3.00	-3.00	
7,100.0	31.60	202.79	5,853.3	-3,513.1	-1,501.4	3,820.5	3.00	-3.00	
7,200.0	28.60	202.79	5,939.8	-3,559.4	-1,520.8	3,870.6	3.00	-3.00	
7,300.0	25.60	202.79	6,028.8	-3,601.4	-1,538.5	3,916.2	3.00	-3.00	
7,400.0	22.60	202.79	6,120.1	-3,639.0	-1,554.3	3,957.0	3.00	-3.00	
7,500.0	19.60	202.79	6,213.3	-3,672.2	-1,568.2	3,993.0	3.00	-3.00	
7,600.0	16.60	202.79	6,308.4	-3,700.8	-1,580.3	4,024.1	3.00	-3.00	
7,700.0	13.60	202.79	6,404.9	-3,724.8	-1,590.4	4,050.1	3.00	-3.00	
7,800.0	10.60	202.79	6,502.7	-3,744.2	-1,598.5	4,071.1	3.00	-3.00	
7,900.0	7.60	202.79	6,601.4	-3,758.7	-1,604.6	4,086.9	3.00	-3.00	
8,000.0	4.60	202.79	6,700.8	-3,768.5	-1,608.7	4,097.5	3.00	-3.00	
8,100.0	1.60	202.79	6,800.7	-3,773.5	-1,610.8	4,102.9	3.00	-3.00	
8,153.3	0.00	0.00	6,854.0	-3,774.2	-1,611.1	4,103.7	3.00	-3.00	EOD @ 8153.3' MD - WILLIAMS_FORK_TVD -
8,200.0	0.01	239.66	6,900.7	-3,774.2	-1,611.1	4,103.7	0.02	0.02	
8,300.0	0.04	239.66	7,000.7	-3,774.2	-1,611.1	4,103.7	0.02	0.02	
8,400.0	0.06	239.66	7,100.7	-3,774.3	-1,611.2	4,103.8	0.02	0.02	
8,500.0	0.08	239.66	7,200.7	-3,774.3	-1,611.3	4,103.9	0.02	0.02	
8,600.0	0.11	239.66	7,300.7	-3,774.4	-1,611.5	4,104.0	0.02	0.02	
8,700.0	0.13	239.66	7,400.7	-3,774.5	-1,611.6	4,104.2	0.02	0.02	
8,800.0	0.16	239.66	7,500.7	-3,774.6	-1,611.9	4,104.4	0.02	0.02	
8,900.0	0.18	239.66	7,600.7	-3,774.8	-1,612.1	4,104.6	0.02	0.02	
9,000.0	0.20	239.66	7,700.7	-3,775.0	-1,612.4	4,104.9	0.02	0.02	
9,100.0	0.23	239.66	7,800.7	-3,775.2	-1,612.7	4,105.2	0.02	0.02	
9,200.0	0.25	239.66	7,900.7	-3,775.4	-1,613.1	4,105.5	0.02	0.02	
9,300.0	0.28	239.66	8,000.7	-3,775.6	-1,613.5	4,105.9	0.02	0.02	

Planning Report

Database:	USA EDM 5000 Multi Users DB	Local Co-ordinate Reference:	Well UWF05A-09 K04
Company:	EnCana Oil & Gas (USA) Inc	TVD Reference:	KB @ 8226.0ft (Original Well Elev)
Project:	North Piceance	MD Reference:	KB @ 8226.0ft (Original Well Elev)
Site:	K04 Pad	North Reference:	True
Well:	UWF05A-09 K04	Survey Calculation Method:	Minimum Curvature
Wellbore:	DD		
Design:	Plan #1		

Planned Survey									
Measured Depth (ft)	Inclination (°)	Azimuth (°)	Vertical Depth (ft)	+N/-S (ft)	+E/-W (ft)	Vertical Section (ft)	Dogleg Rate (°/100ft)	Build Rate (°/100ft)	Comments / Formations
9,400.0	0.30	239.66	8,100.7	-3,775.9	-1,613.9	4,106.3	0.02	0.02	
9,500.0	0.32	239.66	8,200.7	-3,776.1	-1,614.4	4,106.7	0.02	0.02	
9,600.0	0.35	239.66	8,300.7	-3,776.4	-1,614.9	4,107.2	0.02	0.02	
9,700.0	0.37	239.66	8,400.7	-3,776.7	-1,615.4	4,107.7	0.02	0.02	
9,800.0	0.40	239.66	8,500.7	-3,777.1	-1,616.0	4,108.3	0.02	0.02	
9,900.0	0.42	239.66	8,600.7	-3,777.4	-1,616.6	4,108.8	0.02	0.02	
9,949.8	0.43	239.66	8,650.5	-3,777.6	-1,617.0	4,109.1	0.02	0.02	
10,000.0	0.43	239.66	8,700.7	-3,777.8	-1,617.3	4,109.4	0.00	0.00	
10,100.0	0.43	239.66	8,800.7	-3,778.2	-1,617.9	4,110.1	0.00	0.00	
10,200.0	0.43	239.66	8,900.7	-3,778.6	-1,618.6	4,110.7	0.00	0.00	
10,300.0	0.43	239.66	9,000.6	-3,779.0	-1,619.3	4,111.3	0.00	0.00	
10,400.0	0.43	239.66	9,100.6	-3,779.4	-1,619.9	4,111.9	0.00	0.00	
10,500.0	0.43	239.66	9,200.6	-3,779.7	-1,620.6	4,112.5	0.00	0.00	
10,600.0	0.43	239.66	9,300.6	-3,780.1	-1,621.2	4,113.1	0.00	0.00	
10,700.0	0.43	239.66	9,400.6	-3,780.5	-1,621.9	4,113.7	0.00	0.00	
10,800.0	0.43	239.66	9,500.6	-3,780.9	-1,622.5	4,114.3	0.00	0.00	
10,900.0	0.43	239.66	9,600.6	-3,781.3	-1,623.2	4,114.9	0.00	0.00	
11,000.0	0.43	239.66	9,700.6	-3,781.6	-1,623.8	4,115.5	0.00	0.00	
11,100.0	0.43	239.66	9,800.6	-3,782.0	-1,624.5	4,116.1	0.00	0.00	
11,200.0	0.43	239.66	9,900.6	-3,782.4	-1,625.1	4,116.8	0.00	0.00	
11,300.0	0.43	239.66	10,000.6	-3,782.8	-1,625.8	4,117.4	0.00	0.00	
11,400.0	0.43	239.66	10,100.6	-3,783.2	-1,626.4	4,118.0	0.00	0.00	
11,500.0	0.43	239.66	10,200.6	-3,783.6	-1,627.1	4,118.6	0.00	0.00	
11,600.0	0.43	239.66	10,300.6	-3,783.9	-1,627.7	4,119.2	0.00	0.00	
11,657.4	0.43	239.66	10,358.0	-3,784.2	-1,628.1	4,119.5	0.00	0.00	ROLLINS_TVD - UWF05A-09 K04 BHL
11,700.0	0.43	239.66	10,400.6	-3,784.3	-1,628.4	4,119.8	0.00	0.00	
11,800.0	0.43	239.66	10,500.6	-3,784.7	-1,629.0	4,120.4	0.00	0.00	
11,900.0	0.43	239.66	10,600.6	-3,785.1	-1,629.7	4,121.0	0.00	0.00	
11,944.4	0.43	239.66	10,645.0	-3,785.3	-1,630.0	4,121.3	0.00	0.00	COZZETTE_TVD
12,000.0	0.43	239.66	10,700.6	-3,785.5	-1,630.4	4,121.6	0.00	0.00	
12,100.0	0.43	239.66	10,800.6	-3,785.8	-1,631.0	4,122.2	0.00	0.00	
12,116.4	0.43	239.66	10,817.0	-3,785.9	-1,631.1	4,122.3	0.00	0.00	CORCORAN_TVD
12,200.0	0.43	239.66	10,900.6	-3,786.2	-1,631.7	4,122.8	0.00	0.00	
12,300.0	0.43	239.66	11,000.6	-3,786.6	-1,632.3	4,123.5	0.00	0.00	
12,400.0	0.43	239.66	11,100.6	-3,787.0	-1,633.0	4,124.1	0.00	0.00	
12,406.4	0.43	239.66	11,107.0	-3,787.0	-1,633.0	4,124.1	0.00	0.00	UPPER_SEGO_TVD
12,500.0	0.43	239.66	11,200.6	-3,787.4	-1,633.6	4,124.7	0.00	0.00	
12,600.0	0.43	239.66	11,300.6	-3,787.8	-1,634.3	4,125.3	0.00	0.00	
12,700.0	0.43	239.66	11,400.6	-3,788.1	-1,634.9	4,125.9	0.00	0.00	
12,800.0	0.43	239.66	11,500.6	-3,788.5	-1,635.6	4,126.5	0.00	0.00	
12,900.0	0.43	239.66	11,600.6	-3,788.9	-1,636.2	4,127.1	0.00	0.00	
13,000.0	0.43	239.66	11,700.6	-3,789.3	-1,636.9	4,127.7	0.00	0.00	TD @ 13,000' MD

Planning Report

Database:	USA EDM 5000 Multi Users DB	Local Co-ordinate Reference:	Well UWF05A-09 K04
Company:	EnCana Oil & Gas (USA) Inc	TVD Reference:	KB @ 8226.0ft (Original Well Elev)
Project:	North Piceance	MD Reference:	KB @ 8226.0ft (Original Well Elev)
Site:	K04 Pad	North Reference:	True
Well:	UWF05A-09 K04	Survey Calculation Method:	Minimum Curvature
Wellbore:	DD		
Design:	Plan #1		

Targets									
Target Name	Dip Angle	Dip Dir.	TVD	+N/-S	+E/-W	Northing	Easting	Latitude	Longitude
- hit/miss target	(°)	(°)	(ft)	(ft)	(ft)	(ft)	(ft)		
- Shape									
UWF05A-09 K04 TGT - plan hits target center - Point	0.00	358.31	6,854.0	-3,774.2	-1,611.1	1,666,449.81	2,245,064.70	39° 37' 57.40 N	108° 10' 50.81 W
UWF05A-09 K04 BHL - plan hits target center - Rectangle (sides W30.0 H50.0 D0.0)	0.00	358.31	10,358.0	-3,784.2	-1,628.1	1,666,440.35	2,245,047.40	39° 37' 57.30 N	108° 10' 51.03 W

Formations						
Measured Depth	Vertical Depth	Name	Lithology	Dip	Dip Direction	
(ft)	(ft)			(°)	(°)	
950.9	932.0	A_GROOVE_TVD				
1,129.7	1,094.0	B_GROOVE_TVD				
1,175.1	1,134.0	B_GROOVE_BASE_TVD				
2,102.6	1,882.0	GARDEN_GULCH_TVD				
3,433.5	2,938.0	WASATCH_FM_TVD				
5,955.2	4,939.0	WASATCH_G_TVD				
8,153.3	6,854.0	WILLIAMS_FORK_TVD				
11,657.4	10,358.0	ROLLINS_TVD				
11,944.4	10,645.0	COZZETTE_TVD				
12,116.4	10,817.0	CORCORAN_TVD				
12,406.4	11,107.0	UPPER_SEGO_TVD				

Plan Annotations					
Measured Depth	Vertical Depth	Local Coordinates		Comment	
(ft)	(ft)	+N/-S	+E/-W		
		(ft)	(ft)		
200.0	200.0	0.0	0.0	KOP @ 200' MD	
533.3	531.6	-23.8	-16.6	Start 3° Build/Turn @ 533' MD	
1,459.4	1,371.6	-355.9	-175.0	EOB @ 1459.4' MD	
6,903.8	5,691.7	-3,410.6	-1,458.3	Start 3° Drop @ 6903.8' MD	
8,153.3	6,854.0	-3,774.2	-1,611.1	EOD @ 8153.3' MD	
13,000.0	11,700.6	-3,789.3	-1,636.9	TD @ 13,000' MD	