

S 1/4 Cor. Sec. 32
1970 Brass Cap, 0.2' High
E-W Fenceline
Lat: 39.651225°
Long: 108.192233°

T5S, R96W, 6th P.M.

SE Cor. Sec. 33
1953 Brass Cap
0.2' High, Pile
of Stones, Fence
Lat: 39.651322°
Long: 108.164147°

SW Cor. Sec. 33
1970 Brass Cap, 0.2' High
Steel Post, Fenceline
Lat: 39.651258°
Long: 108.182847°

Sec. 33

S89°35'21"W - 2638.68' (Meas.)

C.C. 1917 Brass Cap
0.5' High, Pile of Stones, Fence
Lat: 39.651322°
Long: 108.164839°

S89°37'21"W
2643.75' (Meas.)
True Position L2

S89°40'56"W - 2629.55' (Meas.)

PROPERTY LINE

LOT 3

T4S

S 1/4 Cor. Sec. 33
1970 Brass Cap
0.3' High, Fence Cor.
Lat: 39.651286°
Long: 108.173514°

LOT 2

LOT 1

NOTE:
SEE SHEET 6A FOR EXISTING IMPROVEMENTS
WITHIN 400' OF THE PROPOSED WELL
DISTURBANCE.

Encana OIL & GAS (USA) INC.
Well location, N. PARACHUTE UWF05A-09 K04 596 (SURFACE LOCATION), located as shown in the NE 1/4 SW 1/4 of Section 4, T5S, R96W, 6th P.M., Garfield County, Colorado.

BASIS OF ELEVATION

BENCH MARK (H79) LOCATED IN THE NE 1/4 OF SECTION 35, T4S, R98W, 6th P.M. TAKEN FROM THE BULL FORK QUADRANGLE, COLORADO, 7.5 MINUTE SERIES (TOPO GRAPHICAL MAP) PUBLISHED BY THE UNITED STATES DEPARTMENT OF THE INTERIOR, GEOLOGICAL SURVEY. SAID ELEVATION IS MARKED AS BEING 8535 FEET.

BASIS OF BEARINGS

BASIS OF BEARINGS IS A G.P.S. OBSERVATION.

Sheet 1g of 9

LINE TABLE		
LINE	DIRECTION	LENGTH
L1	N89°35'21"E	195.03'
L2	S89°37'21"W	200.90'



CERTIFICATE

THIS IS TO CERTIFY THAT THE ABOVE PLAT WAS PREPARED AND LOCATION AS SHOWN WAS STAKED ON THE GROUND FROM FIELD NOTES OF ACTUAL SURVEYS MADE BY ME OR UNDER MY SUPERVISION AND THAT THE SAME ARE TRUE AND CORRECT TO THE BEST OF MY KNOWLEDGE AND BELIEF.

John J. Hester
17492
REGISTERED LAND SURVEYOR
REGISTRATION NO. 17492
STATE OF COLORADO
04-20-12

UINTAH ENGINEERING & LAND SURVEYING
85 SOUTH 200 EAST - VERNAL, UTAH 84078
(435) 789-0917

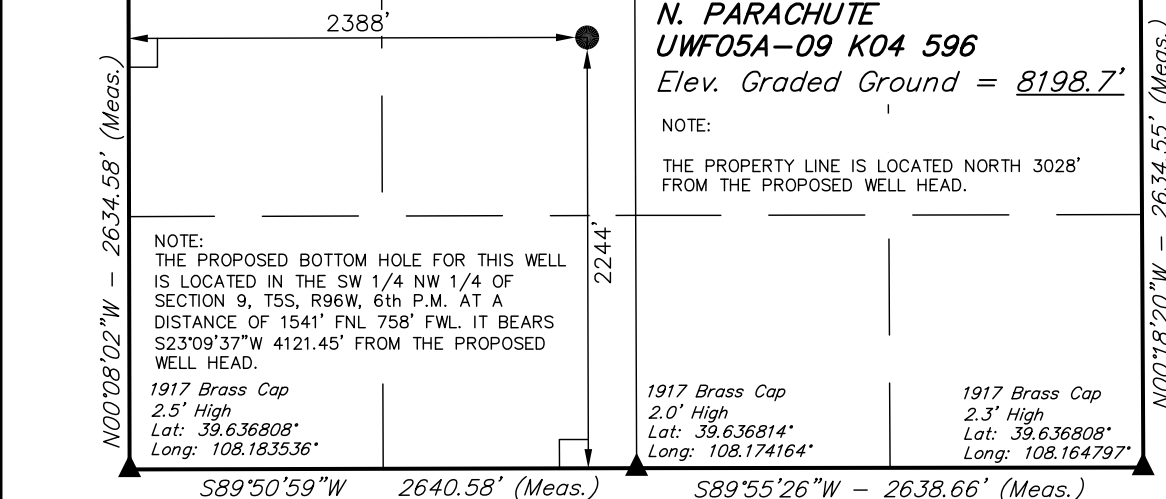
LEGEND:

- └─┘ = 90° SYMBOL
- = PROPOSED WELL HEAD.
- ▲ = SECTION CORNERS LOCATED.
- △ = SECTION CORNERS RE-ESTABLISHED. (Not Set on Ground.)

PDOP = 1.2

NAD 83 (SURFACE LOCATION)	
LATITUDE = 39°38'34.70"	(39.642972)
LONGITUDE = 108°10'30.22"	(108.175061)
NAD 27 (SURFACE LOCATION)	
LATITUDE = 39°38'34.79"	(39.642997)
LONGITUDE = 108°10'27.93"	(108.174425)

SCALE 1" = 1000'	DATE SURVEYED: 04-11-12	DATE DRAWN: 04-17-12
PARTY B.B. C.C. M.D.	REFERENCES G.L.O. PLAT	
WEATHER COLD	FILE Encana OIL & GAS (USA) INC.	



N. PARACHUTE
UWF05A-09 K04 596
Elev. Graded Ground = 8198.7'

NOTE:
THE PROPERTY LINE IS LOCATED NORTH 3028'
FROM THE PROPOSED WELL HEAD.

NOTE:
THE PROPOSED BOTTOM HOLE FOR THIS WELL IS LOCATED IN THE SW 1/4 NW 1/4 OF SECTION 9, T5S, R96W, 6th P.M. AT A DISTANCE OF 1541' FNL 758' FWL. IT BEARS S23°09'37"W 4121.45' FROM THE PROPOSED WELL HEAD.

1917 Brass Cap
2.5' High
Lat: 39.636808°
Long: 108.183536°

1917 Brass Cap
2.0' High
Lat: 39.636814°
Long: 108.174164°

1917 Brass Cap
2.3' High
Lat: 39.636808°
Long: 108.164797°

S89°50'59"W 2640.58' (Meas.) S89°55'26"W - 2638.66' (Meas.)

Encana OIL & GAS (USA) INC.

Well location, N. PARACHUTE UWF05A-09 K04 596 (TARGET BOTTOM HOLE), located as shown in the SW 1/4 NW 1/4 of Section 9, T5S, R96W, 6th P.M., Garfield County, Colorado.

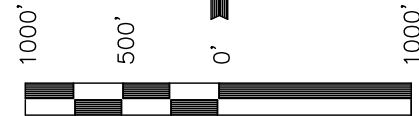
BASIS OF ELEVATION

BENCH MARK (H79) LOCATED IN THE NE 1/4 OF SECTION 35, T4S, R98W, 6th P.M. TAKEN FROM THE BULL FORK QUADRANGLE, COLORADO, 7.5 MINUTE SERIES (TOPO GRAPHICAL MAP) PUBLISHED BY THE UNITED STATES DEPARTMENT OF THE INTERIOR, GEOLOGICAL SURVEY. SAID ELEVATION IS MARKED AS BEING 8535 FEET.

BASIS OF BEARINGS

BASIS OF BEARINGS IS A G.P.S. OBSERVATION.

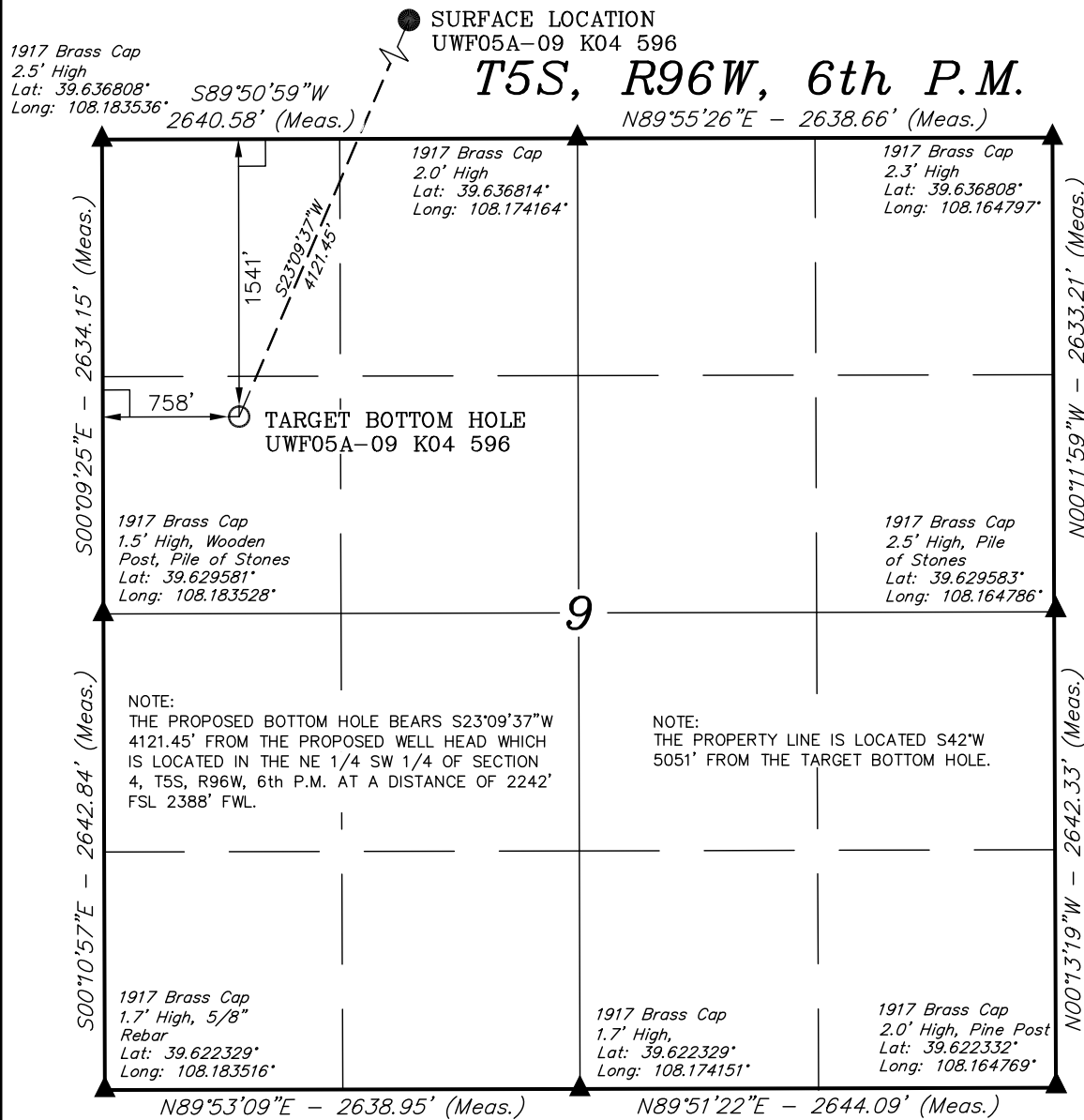
Sheet 1h of 9



CERTIFICATE

THIS IS TO CERTIFY THAT THE ABOVE PLAT WAS PREPARED AND LOCATION AS SHOWN WAS STAKED ON THE GROUND FROM FIELD NOTES OF ACTUAL SURVEYS MADE BY ME OR UNDER MY SUPERVISION AND THAT THE SAME ARE TRUE AND CORRECT TO THE BEST OF MY KNOWLEDGE AND BELIEF.

[Signature]
 REGISTERED LAND SURVEYOR
 REGISTRATION NO. 17492
 STATE OF COLORADO
 04-20-12



LEGEND:

- = 90° SYMBOL
- = PROPOSED WELL HEAD.
- = SECTION CORNERS LOCATED.
- = SECTION CORNERS RE-ESTABLISHED. (Not Set on Ground.)

NAD 83 (TARGET BOTTOM HOLE)	
LATITUDE	= 39°37'57.30" (39.632583)
LONGITUDE	= 108°10'51.03" (108.180842)
NAD 27 (TARGET BOTTOM HOLE)	
LATITUDE	= 39°37'57.39" (39.632608)
LONGITUDE	= 108°10'48.74" (108.180206)

UINTAH ENGINEERING & LAND SURVEYING
 85 SOUTH 200 EAST - VERNAL, UTAH 84078
 (435) 789-0917

SCALE 1" = 1000'	DATE SURVEYED: 04-11-12	DATE DRAWN: 04-17-12
PARTY B.B. C.C. M.D.	REFERENCES G.L.O. PLAT	
WEATHER COLD	FILE Encana OIL & GAS (USA) INC.	