

S 1/4 Cor. Sec. 32
1970 Brass Cap, 0.2' High
E-W Fenceline
Lat: 39.651225°
Long: 108.192233°

T5S, R96W, 6th P.M.

SE Cor. Sec. 33
1953 Brass Cap
0.2' High, Pile
of Stones, Fence
Lat: 39.651322°
Long: 108.164147°

SW Cor. Sec. 33
1970 Brass Cap, 0.2' High
Steel Post, Fenceline
Lat: 39.651258°
Long: 108.182847°

Sec. 33

S89°35'21"W - 2638.68' (Meas.)

C.C. 1917 Brass Cap
0.5' High, Pile of Stones, Fence
Lat: 39.651322°
Long: 108.164839°

COC065556

S89°40'56"W - 2629.55' (Meas.)

**PROPERTY
LINE**

C.C. 1917 Brass Cap
Lat: 39.651256°
Long: 108.183561°

LOT 4

LOT 3

LOT 2

LOT 1

T4S

T5S

S 1/4 Cor. Sec. 33
1970 Brass Cap
0.3' High, Fence Cor.
Lat: 39.651286°
Long: 108.173514°

NOTE:
SEE SHEET 6A FOR EXISTING IMPROVEMENTS
WITHIN 400' OF THE PROPOSED WELL
DISTURBANCE.

1917 Brass Cap
2.0' High
Lat: 39.644039°
Long: 108.183539°

1917 Brass Cap
1.0' High, Pile
of Stones
Lat: 39.644039°
Long: 108.164828°

**N. PARACHUTE
UWF04A-09 K04 596**

Elev. Graded Ground = 8198.9'

NOTE:
THE PROPOSED BOTTOM HOLE FOR THIS WELL
IS LOCATED IN THE NW 1/4 NW 1/4 OF
SECTION 9, T5S, R96W, 6th P.M. AT A
DISTANCE OF 205' FNL 1328' FWL. IT BEARS
S22°43'58"W 2686.13' FROM THE PROPOSED
WELL HEAD.

NOTE:

THE PROPERTY LINE IS LOCATED NORTH 3002'
FROM THE PROPOSED WELL HEAD.

1917 Brass Cap
2.5' High
Lat: 39.636808°
Long: 108.183536°

1917 Brass Cap
2.0' High
Lat: 39.636814°
Long: 108.174164°

1917 Brass Cap
2.3' High
Lat: 39.636808°
Long: 108.164797°

S89°50'59"W 2640.58' (Meas.) S89°55'26"W - 2638.66' (Meas.)

LEGEND:

└─┘ = 90° SYMBOL

● = PROPOSED WELL HEAD.

▲ = SECTION CORNERS LOCATED.

△ = SECTION CORNERS
RE-ESTABLISHED.
(Not Set on Ground.)

PDOP = 1.3

NAD 83 (SURFACE LOCATION)
LATITUDE = 39°38'34.95" (39.643042)
LONGITUDE = 108°10'30.42" (108.175117)
NAD 27 (SURFACE LOCATION)
LATITUDE = 39°38'35.04" (39.643067)
LONGITUDE = 108°10'28.13" (108.174481)

Encana OIL & GAS (USA) INC.

Well location, N. PARACHUTE UWF04A-09 K04 596
(SURFACE LOCATION), located as shown in the NE
1/4 SW 1/4 of Section 4, T5S, R96W, 6th P.M.,
Garfield County, Colorado.

BASIS OF ELEVATION

BENCH MARK (H79) LOCATED IN THE NE 1/4 OF SECTION
35, T4S, R98W, 6th P.M. TAKEN FROM THE BULL FORK
QUADRANGLE, COLORADO, 7.5 MINUTE SERIES (TOPO
GRAPHICAL MAP) PUBLISHED BY THE UNITED STATES
DEPARTMENT OF THE INTERIOR, GEOLOGICAL SURVEY.
SAID ELEVATION IS MARKED AS BEING 8535 FEET.

BASIS OF BEARINGS

BASIS OF BEARINGS IS A G.P.S. OBSERVATION.

LINE TABLE		
LINE	DIRECTION	LENGTH
L1	N89°35'21"E	195.03'
L2	S89°37'21"W	200.90'



Sheet 1s of 9



CERTIFICATE

THIS IS TO CERTIFY THAT THE ABOVE PLAT WAS PREPARED AND
LOCATION AS SHOWN WAS STAKED ON THE GROUND FROM FIELD
NOTES OF ACTUAL SURVEYS MADE BY ME OR UNDER MY
SUPERVISION AND THAT THE SAME ARE TRUE AND CORRECT TO
THE BEST OF MY KNOWLEDGE AND BELIEF.

REGISTERED LAND SURVEYOR
REGISTRATION NO. 17492
STATE OF COLORADO
04-20-12

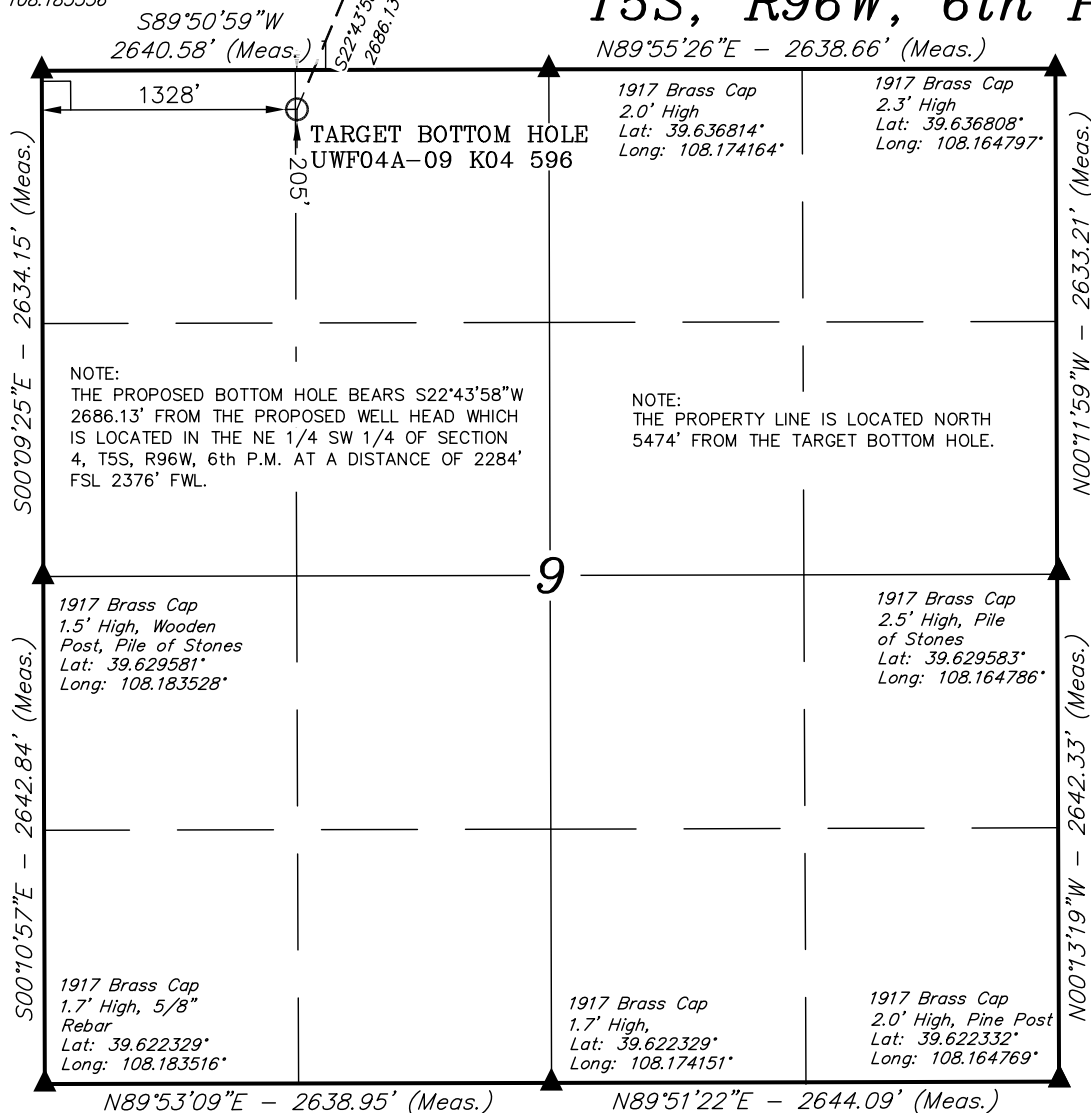
UINTAH ENGINEERING & LAND SURVEYING
85 SOUTH 200 EAST - VERNAL, UTAH 84078
(435) 789-0917

SCALE 1" = 1000'	DATE SURVEYED: 04-11-12	DATE DRAWN: 04-17-12
PARTY B.B. C.C. M.D.	REFERENCES G.L.O. PLAT	
WEATHER COLD	FILE Encana OIL & GAS (USA) INC.	

1917 Brass Cap
2.5' High
Lat: 39.636808°
Long: 108.183536°

SURFACE LOCATION
UWF04A-09 K04 596

T5S, R96W, 6th P.M.



LEGEND:

- └─┘ = 90° SYMBOL
- = PROPOSED WELL HEAD.
- ▲ = SECTION CORNERS LOCATED.
- △ = SECTION CORNERS RE-ESTABLISHED. (Not Set on Ground.)

NAD 83 (TARGET BOTTOM HOLE)	
LATITUDE	= 39°38'10.50" (39.636250)
LONGITUDE	= 108°10'43.75" (108.178819)
NAD 27 (TARGET BOTTOM HOLE)	
LATITUDE	= 39°38'10.59" (39.636275)
LONGITUDE	= 108°10'41.46" (108.178183)

Encana OIL & GAS (USA) INC.

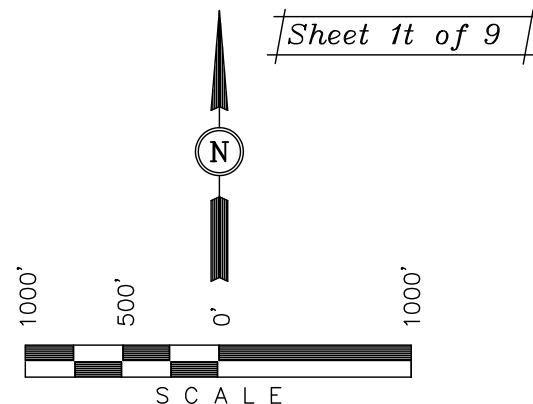
Well location, N. PARACHUTE UWF04A-09 K04 596 (TARGET BOTTOM HOLE), located as shown in the NE 1/4 NW 1/4 of Section 9, T5S, R96W, 6th P.M., Garfield County, Colorado.

BASIS OF ELEVATION

BENCH MARK (H79) LOCATED IN THE NE 1/4 OF SECTION 35, T4S, R98W, 6th P.M. TAKEN FROM THE BULL FORK QUADRANGLE, COLORADO, 7.5 MINUTE SERIES (TOPO GRAPHICAL MAP) PUBLISHED BY THE UNITED STATES DEPARTMENT OF THE INTERIOR, GEOLOGICAL SURVEY. SAID ELEVATION IS MARKED AS BEING 8535 FEET.

BASIS OF BEARINGS

BASIS OF BEARINGS IS A G.P.S. OBSERVATION.



CERTIFICATE

THIS IS TO CERTIFY THAT THE ABOVE PLAT WAS PREPARED AND LOCATION AS SHOWN WAS STAKED ON THE GROUND FROM FIELD NOTES OF ACTUAL SURVEYS MADE BY ME OR UNDER MY SUPERVISION AND THAT THE SAME ARE TRUE AND CORRECT TO THE BEST OF MY KNOWLEDGE AND BELIEF.

REGISTERED LAND SURVEYOR
REGISTRATION NO. 17492
STATE OF COLORADO
04-20-12

UINTAH ENGINEERING & LAND SURVEYING
85 SOUTH 200 EAST - VERNAL, UTAH 84078
(435) 789-0917

SCALE 1" = 1000'	DATE SURVEYED: 04-11-12	DATE DRAWN: 04-17-12
PARTY B.B. C.C. M.D.	REFERENCES G.L.O. PLAT	
WEATHER COLD	FILE Encana OIL & GAS (USA) INC.	