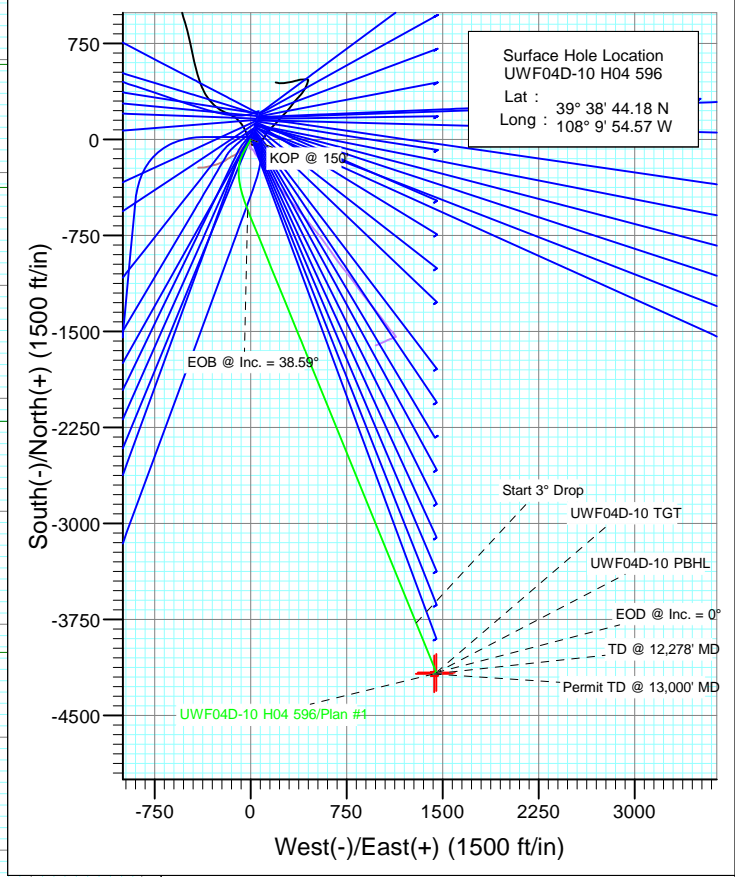


SECTION DETAILS

Sec	MD	Inc	Azi	TVD	+N/-S	+E/-W	Dleg	TFace	Vsect	Target
1	0.0	0.00	0.00	0.0	0.0	0.0	0.00	0.00	0.0	
2	150.0	0.00	0.00	150.0	0.0	0.0	0.00	0.00	0.0	
3	816.7	20.00	210.00	803.2	-99.7	-57.6	3.00	210.00	75.7	
4	1819.6	38.59	157.81	1686.8	-548.3	-24.4	3.00	-79.42	510.9	
5	7410.5	38.59	157.81	6056.7	-3777.5	1292.8	0.00	0.00	3992.6	
6	8697.0	0.00	0.00	7248.0	-4163.7	1450.3	3.00	180.00	4409.0	UWF04D-10 TGT
7	10505.6	0.42	239.51	9056.6	-4167.1	1444.5	0.02	239.51	4410.3	
8	12278.0	0.42	239.51	10829.0	-4173.7	1433.3	0.00	0.00	4413.0	UWF04D-10 PBHL
9	13000.0	0.42	239.51	11550.9	-4176.4	1428.7	0.00	0.00	4414.0	



T M

Azimuths to True North
 Magnetic North: 10.34°

Magnetic Field
 Strength: 52205.8snT
 Dip Angle: 65.81°
 Date: 4/18/2012
 Model: IGRF2010

FORMATION TOP DETAILS

TVDPath	MDPath	Formation
1051.0	1082.4	A GROOVE
1215.0	1262.4	B GROOVE
1255.0	1307.0	B GROOVE BASE
2043.0	2275.4	GARDEN GULCH
3133.0	3669.9	WASATCH FM
5203.0	6318.3	WASATCH G
7248.0	8697.0	WILLIAMS FORK
10829.0	12278.0	ROLLINS
11063.0	12512.0	COZZETTE
11240.0	12689.0	CORCORAN
11534.0	12983.1	UPPER SEGO

Type TD	Target No Target (Freehand)	Azimuth 161.12	Origin Slot	N/S 0.0	E/W 0.0	From TVD 0.0
Name	TVD	+N/-S	+E/-W	Latitude	Longitude	
UWF04D-10 TGT	7248.0	-4163.7	1450.3	39° 38' 3.03 N	108° 9' 36.03 W	
UWF04D-10 PBHL	10829.0	-4173.7	1433.3	39° 38' 2.93 N	108° 9' 36.25 W	

Cathedral Energy Services

Planning Report

Database: USA EDM 5000 Multi Users DB	Local Co-ordinate Reference: Well UWF04D-10 H04 596
Company: EnCana Oil & Gas (USA) Inc	TVD Reference: KBE @ 8293.0ft (Original Well Elev)
Project: North Piceance	MD Reference: KBE @ 8293.0ft (Original Well Elev)
Site: H04 Pad	North Reference: True
Well: UWF04D-10 H04 596	Survey Calculation Method: Minimum Curvature
Wellbore: DD	
Design: Plan #1	

Project North Piceance		
Map System: US State Plane 1983	System Datum: Mean Sea Level	
Geo Datum: North American Datum 1983		
Map Zone: Colorado Central Zone		

Site H04 Pad					
Site Position:		Northing:	1,671,070.85 ft	Latitude:	39° 38' 44.37 N
From:	Lat/Long	Easting:	2,249,607.93 ft	Longitude:	108° 9' 54.50 W
Position Uncertainty:	0.0 ft	Slot Radius:	13.200 in	Grid Convergence:	-1.68 °

Well UWF04D-10 H04 596					
Well Position	+N/-S	0.0 ft	Northing:	1,671,051.78 ft	Latitude: 39° 38' 44.18 N
	+E/-W	0.0 ft	Easting:	2,249,601.89 ft	Longitude: 108° 9' 54.57 W
Position Uncertainty		0.0 ft	Wellhead Elevation:	ft	Ground Level: 8,260.0 ft

Wellbore DD					
Magnetics	Model Name	Sample Date	Declination	Dip Angle	Field Strength
	IGRF2010	4/18/2012	(°) 10.34	(°) 65.81	(nT) 52,206

Design Plan #1				
Audit Notes:				
Version:	Phase:	PLAN	Tie On Depth:	0.0
Vertical Section:	Depth From (TVD)	+N/-S	+E/-W	Direction
	(ft)	(ft)	(ft)	(°)
	0.0	0.0	0.0	161.12

Plan Sections										
Measured Depth (ft)	Inclination (°)	Azimuth (°)	Vertical Depth (ft)	+N/-S (ft)	+E/-W (ft)	Dogleg Rate (°/100ft)	Build Rate (°/100ft)	Turn Rate (°/100ft)	TFO (°)	Target
0.0	0.00	0.00	0.0	0.0	0.0	0.00	0.00	0.00	0.00	
150.0	0.00	0.00	150.0	0.0	0.0	0.00	0.00	0.00	0.00	
816.7	20.00	210.00	803.2	-99.7	-57.6	3.00	3.00	0.00	210.00	
1,819.6	38.59	157.81	1,686.8	-548.3	-24.4	3.00	1.85	-5.20	-79.42	
7,410.5	38.59	157.81	6,056.7	-3,777.5	1,292.8	0.00	0.00	0.00	0.00	
8,697.0	0.00	0.00	7,248.0	-4,163.7	1,450.3	3.00	-3.00	0.00	180.00	UWF04D-10 TGT
10,505.6	0.42	239.51	9,056.6	-4,167.1	1,444.5	0.02	0.02	-6.66	239.51	
12,278.0	0.42	239.51	10,829.0	-4,173.7	1,433.3	0.00	0.00	0.00	0.00	UWF04D-10 PBHL
13,000.0	0.42	239.51	11,550.9	-4,176.4	1,428.7	0.00	0.00	0.00	0.00	

Cathedral Energy Services

Planning Report

Database:	USA EDM 5000 Multi Users DB	Local Co-ordinate Reference:	Well UWF04D-10 H04 596
Company:	EnCana Oil & Gas (USA) Inc	TVD Reference:	KBE @ 8293.0ft (Original Well Elev)
Project:	North Piceance	MD Reference:	KBE @ 8293.0ft (Original Well Elev)
Site:	H04 Pad	North Reference:	True
Well:	UWF04D-10 H04 596	Survey Calculation Method:	Minimum Curvature
Wellbore:	DD		
Design:	Plan #1		

Planned Survey

Measured Depth (ft)	Inclination (°)	Azimuth (°)	Vertical Depth (ft)	+N/-S (ft)	+E/-W (ft)	Vertical Section (ft)	Dogleg Rate (°/100ft)	Build Rate (°/100ft)	Comments / Formations
0.0	0.00	0.00	0.0	0.0	0.0	0.0	0.00	0.00	
100.0	0.00	0.00	100.0	0.0	0.0	0.0	0.00	0.00	
150.0	0.00	0.00	150.0	0.0	0.0	0.0	0.00	0.00	KOP @ 150'
200.0	1.50	210.00	200.0	-0.6	-0.3	0.4	3.00	3.00	
300.0	4.50	210.00	299.8	-5.1	-2.9	3.9	3.00	3.00	
400.0	7.50	210.00	399.3	-14.2	-8.2	10.7	3.00	3.00	
500.0	10.50	210.00	498.0	-27.7	-16.0	21.0	3.00	3.00	
600.0	13.50	210.00	595.8	-45.7	-26.4	34.7	3.00	3.00	
700.0	16.50	210.00	692.4	-68.1	-39.3	51.7	3.00	3.00	
800.0	19.50	210.00	787.5	-94.9	-54.8	72.0	3.00	3.00	
816.7	20.00	210.00	803.2	-99.7	-57.6	75.7	3.00	3.00	
900.0	20.60	203.00	881.4	-125.6	-70.4	96.0	3.00	0.72	
1,000.0	21.67	195.21	974.7	-159.6	-82.2	124.4	3.00	1.07	
1,082.4	22.79	189.39	1,051.0	-190.1	-88.8	151.1	3.00	1.37	A GROOVE
1,100.0	23.06	188.23	1,067.2	-196.8	-89.8	157.1	3.00	1.52	
1,200.0	24.73	182.06	1,158.6	-237.1	-93.4	194.1	3.00	1.67	
1,262.4	25.88	178.61	1,215.0	-263.8	-93.5	219.3	3.00	1.85	B GROOVE
1,300.0	26.61	176.67	1,248.7	-280.4	-92.8	235.2	3.00	1.95	
1,307.0	26.75	176.32	1,255.0	-283.5	-92.6	238.3	3.00	1.99	B GROOVE BASE
1,400.0	28.68	171.98	1,337.3	-326.5	-88.2	280.4	3.00	2.07	
1,500.0	30.88	167.88	1,424.1	-375.4	-79.4	329.5	3.00	2.21	
1,600.0	33.20	164.29	1,508.9	-426.8	-66.6	382.3	3.00	2.32	
1,700.0	35.61	161.13	1,591.4	-480.8	-49.8	438.8	3.00	2.41	
1,800.0	38.10	158.32	1,671.4	-537.0	-29.0	498.7	3.00	2.48	
1,819.6	38.59	157.81	1,686.8	-548.3	-24.4	510.8	3.00	2.52	EOB @ Inc. = 38.59°
1,900.0	38.59	157.81	1,749.6	-594.7	-5.5	560.9	0.00	0.00	
2,000.0	38.59	157.81	1,827.8	-652.5	18.1	623.2	0.00	0.00	
2,100.0	38.59	157.81	1,905.9	-710.2	41.6	685.5	0.00	0.00	
2,200.0	38.59	157.81	1,984.1	-768.0	65.2	747.7	0.00	0.00	
2,275.4	38.59	157.81	2,043.0	-811.5	82.9	794.7	0.00	0.00	GARDEN GULCH
2,300.0	38.59	157.81	2,062.3	-825.7	88.7	810.0	0.00	0.00	
2,400.0	38.59	157.81	2,140.4	-883.5	112.3	872.3	0.00	0.00	
2,500.0	38.59	157.81	2,218.6	-941.3	135.9	934.6	0.00	0.00	
2,600.0	38.59	157.81	2,296.7	-999.0	159.4	996.8	0.00	0.00	
2,700.0	38.59	157.81	2,374.9	-1,056.8	183.0	1,059.1	0.00	0.00	
2,800.0	38.59	157.81	2,453.1	-1,114.5	206.5	1,121.4	0.00	0.00	
2,900.0	38.59	157.81	2,531.2	-1,172.3	230.1	1,183.7	0.00	0.00	
3,000.0	38.59	157.81	2,609.4	-1,230.0	253.7	1,245.9	0.00	0.00	
3,100.0	38.59	157.81	2,687.5	-1,287.8	277.2	1,308.2	0.00	0.00	
3,200.0	38.59	157.81	2,765.7	-1,345.6	300.8	1,370.5	0.00	0.00	
3,300.0	38.59	157.81	2,843.9	-1,403.3	324.3	1,432.8	0.00	0.00	
3,400.0	38.59	157.81	2,922.0	-1,461.1	347.9	1,495.0	0.00	0.00	
3,500.0	38.59	157.81	3,000.2	-1,518.8	371.5	1,557.3	0.00	0.00	
3,600.0	38.59	157.81	3,078.3	-1,576.6	395.0	1,619.6	0.00	0.00	
3,669.9	38.59	157.81	3,133.0	-1,617.0	411.5	1,663.1	0.00	0.00	WASATCH FM
3,700.0	38.59	157.81	3,156.5	-1,634.3	418.6	1,681.9	0.00	0.00	
3,800.0	38.59	157.81	3,234.7	-1,692.1	442.1	1,744.1	0.00	0.00	
3,900.0	38.59	157.81	3,312.8	-1,749.9	465.7	1,806.4	0.00	0.00	
4,000.0	38.59	157.81	3,391.0	-1,807.6	489.3	1,868.7	0.00	0.00	
4,100.0	38.59	157.81	3,469.1	-1,865.4	512.8	1,930.9	0.00	0.00	
4,200.0	38.59	157.81	3,547.3	-1,923.1	536.4	1,993.2	0.00	0.00	
4,300.0	38.59	157.81	3,625.5	-1,980.9	559.9	2,055.5	0.00	0.00	

Cathedral Energy Services

Planning Report

Database:	USA EDM 5000 Multi Users DB	Local Co-ordinate Reference:	Well UWF04D-10 H04 596
Company:	EnCana Oil & Gas (USA) Inc	TVD Reference:	KBE @ 8293.0ft (Original Well Elev)
Project:	North Piceance	MD Reference:	KBE @ 8293.0ft (Original Well Elev)
Site:	H04 Pad	North Reference:	True
Well:	UWF04D-10 H04 596	Survey Calculation Method:	Minimum Curvature
Wellbore:	DD		
Design:	Plan #1		

Planned Survey									
Measured Depth (ft)	Inclination (°)	Azimuth (°)	Vertical Depth (ft)	+N/-S (ft)	+E/-W (ft)	Vertical Section (ft)	Dogleg Rate (°/100ft)	Build Rate (°/100ft)	Comments / Formations
4,400.0	38.59	157.81	3,703.6	-2,038.7	583.5	2,117.8	0.00	0.00	
4,500.0	38.59	157.81	3,781.8	-2,096.4	607.0	2,180.0	0.00	0.00	
4,600.0	38.59	157.81	3,859.9	-2,154.2	630.6	2,242.3	0.00	0.00	
4,700.0	38.59	157.81	3,938.1	-2,211.9	654.2	2,304.6	0.00	0.00	
4,800.0	38.59	157.81	4,016.3	-2,269.7	677.7	2,366.9	0.00	0.00	
4,900.0	38.59	157.81	4,094.4	-2,327.4	701.3	2,429.1	0.00	0.00	
5,000.0	38.59	157.81	4,172.6	-2,385.2	724.8	2,491.4	0.00	0.00	
5,100.0	38.59	157.81	4,250.7	-2,443.0	748.4	2,553.7	0.00	0.00	
5,200.0	38.59	157.81	4,328.9	-2,500.7	772.0	2,616.0	0.00	0.00	
5,300.0	38.59	157.81	4,407.1	-2,558.5	795.5	2,678.2	0.00	0.00	
5,400.0	38.59	157.81	4,485.2	-2,616.2	819.1	2,740.5	0.00	0.00	
5,500.0	38.59	157.81	4,563.4	-2,674.0	842.6	2,802.8	0.00	0.00	
5,600.0	38.59	157.81	4,641.5	-2,731.7	866.2	2,865.1	0.00	0.00	
5,700.0	38.59	157.81	4,719.7	-2,789.5	889.8	2,927.3	0.00	0.00	
5,800.0	38.59	157.81	4,797.9	-2,847.3	913.3	2,989.6	0.00	0.00	
5,900.0	38.59	157.81	4,876.0	-2,905.0	936.9	3,051.9	0.00	0.00	
6,000.0	38.59	157.81	4,954.2	-2,962.8	960.4	3,114.2	0.00	0.00	
6,100.0	38.59	157.81	5,032.3	-3,020.5	984.0	3,176.4	0.00	0.00	
6,200.0	38.59	157.81	5,110.5	-3,078.3	1,007.6	3,238.7	0.00	0.00	
6,300.0	38.59	157.81	5,188.7	-3,136.0	1,031.1	3,301.0	0.00	0.00	
6,318.3	38.59	157.81	5,203.0	-3,146.6	1,035.4	3,312.4	0.00	0.00	WASATCH G
6,400.0	38.59	157.81	5,266.8	-3,193.8	1,054.7	3,363.3	0.00	0.00	
6,500.0	38.59	157.81	5,345.0	-3,251.6	1,078.2	3,425.5	0.00	0.00	
6,600.0	38.59	157.81	5,423.1	-3,309.3	1,101.8	3,487.8	0.00	0.00	
6,700.0	38.59	157.81	5,501.3	-3,367.1	1,125.4	3,550.1	0.00	0.00	
6,800.0	38.59	157.81	5,579.5	-3,424.8	1,148.9	3,612.4	0.00	0.00	
6,900.0	38.59	157.81	5,657.6	-3,482.6	1,172.5	3,674.6	0.00	0.00	
7,000.0	38.59	157.81	5,735.8	-3,540.4	1,196.0	3,736.9	0.00	0.00	
7,100.0	38.59	157.81	5,813.9	-3,598.1	1,219.6	3,799.2	0.00	0.00	
7,200.0	38.59	157.81	5,892.1	-3,655.9	1,243.2	3,861.4	0.00	0.00	
7,300.0	38.59	157.81	5,970.3	-3,713.6	1,266.7	3,923.7	0.00	0.00	
7,400.0	38.59	157.81	6,048.4	-3,771.4	1,290.3	3,986.0	0.00	0.00	
7,410.5	38.59	157.81	6,056.6	-3,777.4	1,292.7	3,992.5	0.00	0.00	Start 3° Drop
7,500.0	35.91	157.81	6,127.9	-3,827.6	1,313.2	4,046.6	3.00	-3.00	
7,600.0	32.91	157.81	6,210.4	-3,879.9	1,334.5	4,103.0	3.00	-3.00	
7,700.0	29.91	157.81	6,295.7	-3,928.2	1,354.2	4,155.0	3.00	-3.00	
7,800.0	26.91	157.81	6,383.6	-3,972.2	1,372.2	4,202.5	3.00	-3.00	
7,900.0	23.91	157.81	6,474.0	-4,011.9	1,388.4	4,245.4	3.00	-3.00	
8,000.0	20.91	157.81	6,566.4	-4,047.2	1,402.8	4,283.4	3.00	-3.00	
8,100.0	17.91	157.81	6,660.7	-4,078.0	1,415.3	4,316.6	3.00	-3.00	
8,200.0	14.91	157.81	6,756.6	-4,104.2	1,426.0	4,344.8	3.00	-3.00	
8,300.0	11.91	157.81	6,853.9	-4,125.6	1,434.8	4,367.9	3.00	-3.00	
8,400.0	8.91	157.81	6,952.2	-4,142.4	1,441.6	4,386.0	3.00	-3.00	
8,500.0	5.91	157.81	7,051.4	-4,154.3	1,446.5	4,398.9	3.00	-3.00	
8,600.0	2.91	157.81	7,151.1	-4,161.4	1,449.4	4,406.5	3.00	-3.00	
8,697.0	0.00	0.00	7,248.0	-4,163.7	1,450.3	4,409.0	3.00	-3.00	EOD @ Inc. = 0° - WILLIAMS FORK
8,700.0	0.00	239.51	7,251.0	-4,163.7	1,450.3	4,409.0	0.02	0.02	
8,800.0	0.02	239.51	7,351.0	-4,163.7	1,450.3	4,409.0	0.02	0.02	
8,900.0	0.05	239.51	7,451.0	-4,163.7	1,450.2	4,409.0	0.02	0.02	
9,000.0	0.07	239.51	7,551.0	-4,163.8	1,450.1	4,409.0	0.02	0.02	
9,100.0	0.09	239.51	7,651.0	-4,163.9	1,450.0	4,409.0	0.02	0.02	
9,200.0	0.12	239.51	7,751.0	-4,164.0	1,449.9	4,409.1	0.02	0.02	

Cathedral Energy Services

Planning Report

Database:	USA EDM 5000 Multi Users DB	Local Co-ordinate Reference:	Well UWF04D-10 H04 596
Company:	EnCana Oil & Gas (USA) Inc	TVD Reference:	KBE @ 8293.0ft (Original Well Elev)
Project:	North Piceance	MD Reference:	KBE @ 8293.0ft (Original Well Elev)
Site:	H04 Pad	North Reference:	True
Well:	UWF04D-10 H04 596	Survey Calculation Method:	Minimum Curvature
Wellbore:	DD		
Design:	Plan #1		

Planned Survey									
Measured Depth (ft)	Inclination (°)	Azimuth (°)	Vertical Depth (ft)	+N/-S (ft)	+E/-W (ft)	Vertical Section (ft)	Dogleg Rate (°/100ft)	Build Rate (°/100ft)	Comments / Formations
9,300.0	0.14	239.51	7,851.0	-4,164.1	1,449.7	4,409.1	0.02	0.02	
9,400.0	0.16	239.51	7,951.0	-4,164.2	1,449.4	4,409.2	0.02	0.02	
9,500.0	0.19	239.51	8,051.0	-4,164.4	1,449.2	4,409.2	0.02	0.02	
9,600.0	0.21	239.51	8,151.0	-4,164.5	1,448.9	4,409.3	0.02	0.02	
9,700.0	0.23	239.51	8,251.0	-4,164.7	1,448.5	4,409.4	0.02	0.02	
9,800.0	0.26	239.51	8,351.0	-4,165.0	1,448.2	4,409.5	0.02	0.02	
9,900.0	0.28	239.51	8,451.0	-4,165.2	1,447.8	4,409.6	0.02	0.02	
10,000.0	0.30	239.51	8,551.0	-4,165.5	1,447.3	4,409.7	0.02	0.02	
10,100.0	0.33	239.51	8,651.0	-4,165.7	1,446.8	4,409.8	0.02	0.02	
10,200.0	0.35	239.51	8,751.0	-4,166.0	1,446.3	4,409.9	0.02	0.02	
10,300.0	0.37	239.51	8,851.0	-4,166.4	1,445.8	4,410.0	0.02	0.02	
10,400.0	0.40	239.51	8,951.0	-4,166.7	1,445.2	4,410.2	0.02	0.02	
10,505.6	0.42	239.51	9,056.6	-4,167.1	1,444.5	4,410.3	0.02	0.02	
10,600.0	0.42	239.51	9,151.0	-4,167.4	1,443.9	4,410.5	0.00	0.00	
10,700.0	0.42	239.51	9,251.0	-4,167.8	1,443.3	4,410.6	0.00	0.00	
10,800.0	0.42	239.51	9,351.0	-4,168.2	1,442.7	4,410.8	0.00	0.00	
10,900.0	0.42	239.51	9,451.0	-4,168.6	1,442.0	4,410.9	0.00	0.00	
11,000.0	0.42	239.51	9,551.0	-4,168.9	1,441.4	4,411.1	0.00	0.00	
11,100.0	0.42	239.51	9,651.0	-4,169.3	1,440.8	4,411.2	0.00	0.00	
11,200.0	0.42	239.51	9,751.0	-4,169.7	1,440.1	4,411.4	0.00	0.00	
11,300.0	0.42	239.51	9,851.0	-4,170.1	1,439.5	4,411.5	0.00	0.00	
11,400.0	0.42	239.51	9,951.0	-4,170.4	1,438.9	4,411.7	0.00	0.00	
11,500.0	0.42	239.51	10,051.0	-4,170.8	1,438.2	4,411.8	0.00	0.00	
11,600.0	0.42	239.51	10,151.0	-4,171.2	1,437.6	4,412.0	0.00	0.00	
11,700.0	0.42	239.51	10,251.0	-4,171.6	1,436.9	4,412.1	0.00	0.00	
11,800.0	0.42	239.51	10,351.0	-4,171.9	1,436.3	4,412.2	0.00	0.00	
11,900.0	0.42	239.51	10,451.0	-4,172.3	1,435.7	4,412.4	0.00	0.00	
12,000.0	0.42	239.51	10,551.0	-4,172.7	1,435.0	4,412.5	0.00	0.00	
12,100.0	0.42	239.51	10,651.0	-4,173.1	1,434.4	4,412.7	0.00	0.00	
12,200.0	0.42	239.51	10,751.0	-4,173.4	1,433.8	4,412.8	0.00	0.00	
12,278.0	0.42	239.51	10,829.0	-4,173.7	1,433.3	4,413.0	0.00	0.00	TD @ 12,278' MD - ROLLINS
12,300.0	0.42	239.51	10,851.0	-4,173.8	1,433.1	4,413.0	0.00	0.00	
12,400.0	0.42	239.51	10,951.0	-4,174.2	1,432.5	4,413.1	0.00	0.00	
12,500.0	0.42	239.51	11,051.0	-4,174.6	1,431.9	4,413.3	0.00	0.00	
12,512.0	0.42	239.51	11,063.0	-4,174.6	1,431.8	4,413.3	0.00	0.00	COZZETTE
12,600.0	0.42	239.51	11,151.0	-4,174.9	1,431.2	4,413.4	0.00	0.00	
12,689.0	0.42	239.51	11,240.0	-4,175.3	1,430.7	4,413.6	0.00	0.00	CORCORAN
12,700.0	0.42	239.51	11,251.0	-4,175.3	1,430.6	4,413.6	0.00	0.00	
12,800.0	0.42	239.51	11,351.0	-4,175.7	1,430.0	4,413.7	0.00	0.00	
12,900.0	0.42	239.51	11,450.9	-4,176.1	1,429.3	4,413.9	0.00	0.00	
12,983.1	0.42	239.51	11,534.0	-4,176.4	1,428.8	4,414.0	0.00	0.00	UPPER SEGO
13,000.0	0.42	239.51	11,550.9	-4,176.4	1,428.7	4,414.0	0.00	0.00	Permit TD @ 13,000' MD

Cathedral Energy Services

Planning Report

Database: USA EDM 5000 Multi Users DB	Local Co-ordinate Reference: Well UWF04D-10 H04 596
Company: EnCana Oil & Gas (USA) Inc	TVD Reference: KBE @ 8293.0ft (Original Well Elev)
Project: North Piceance	MD Reference: KBE @ 8293.0ft (Original Well Elev)
Site: H04 Pad	North Reference: True
Well: UWF04D-10 H04 596	Survey Calculation Method: Minimum Curvature
Wellbore: DD	
Design: Plan #1	

Targets									
Target Name	Dip Angle	Dip Dir.	TVD	+N/-S	+E/-W	Northing	Easting	Latitude	Longitude
- hit/miss target	(°)	(°)	(ft)	(ft)	(ft)	(ft)	(ft)		
- Shape									
UWF04D-10 PBHL - plan hits target center - Rectangle (sides W30.0 H50.0 D0.0)	0.00	0.00	10,829.0	-4,173.7	1,433.3	1,666,837.81	2,250,912.12	39° 38' 2.93 N	108° 9' 36.25 W
UWF04D-10 TGT - plan hits target center - Point	0.00	0.00	7,248.0	-4,163.7	1,450.3	1,666,847.34	2,250,929.43	39° 38' 3.03 N	108° 9' 36.03 W

Formations						
Measured Depth	Vertical Depth	Name	Lithology	Dip	Dip Direction	
(ft)	(ft)			(°)	(°)	
1,082.4	1,051.0	A GROOVE				
1,262.4	1,215.0	B GROOVE				
1,307.0	1,255.0	B GROOVE BASE				
2,275.4	2,043.0	GARDEN GULCH				
3,669.9	3,133.0	WASATCH FM				
6,318.3	5,203.0	WASATCH G				
8,697.0	7,248.0	WILLIAMS FORK				
12,278.0	10,829.0	ROLLINS				
12,512.0	11,063.0	COZZETTE				
12,689.0	11,240.0	CORCORAN				
12,983.1	11,534.0	UPPER SEGO				

Plan Annotations					
Measured Depth	Vertical Depth	Local Coordinates		Comment	
(ft)	(ft)	+N/-S	+E/-W		
		(ft)	(ft)		
150.0	150.0	0.0	0.0	KOP @ 150'	
1,819.6	1,686.8	-548.3	-24.4	EOB @ Inc. = 38.59°	
7,410.5	6,056.6	-3,777.4	1,292.7	Start 3° Drop	
8,697.0	7,248.0	-4,163.7	1,450.3	EOD @ Inc. = 0°	
12,278.0	10,829.0	-4,173.7	1,433.3	TD @ 12,278' MD	
13,000.0	11,550.9	-4,176.4	1,428.7	Permit TD @ 13,000' MD	