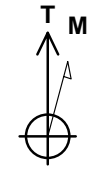
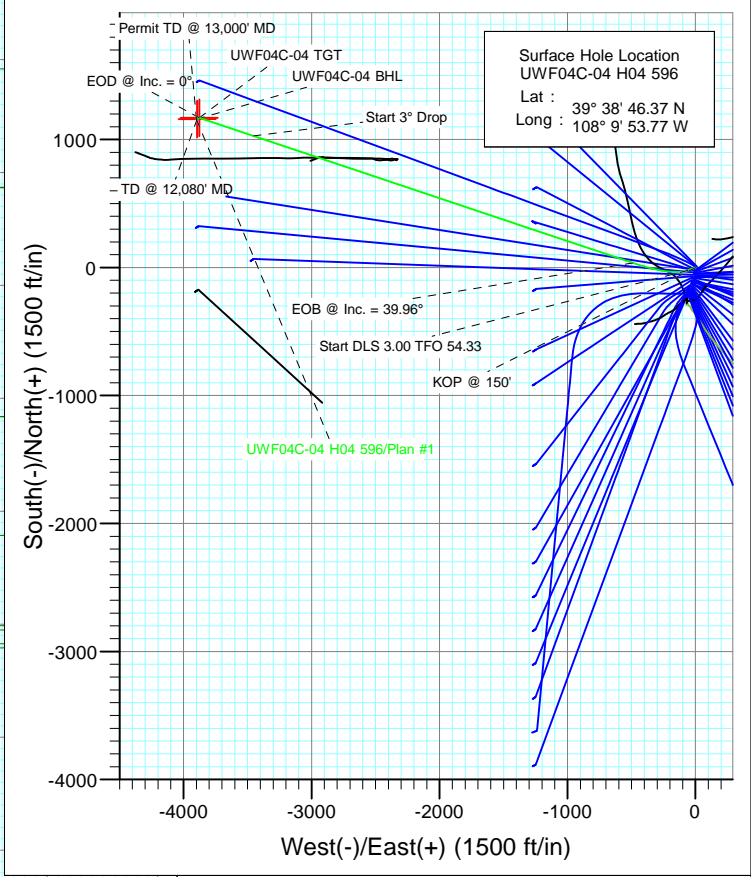


SECTION DETAILS

Sec	MD	Inc	Azi	TVD	+N/-S	+E/-W	Dleg	TFace	VSect	Target
1	0.0	0.00	0.00	0.0	0.0	0.0	0.00	0.00	0.0	
2	150.0	0.00	0.00	150.0	0.0	0.0	0.00	0.00	0.0	
3	650.0	15.00	250.00	644.3	-22.3	-61.2	3.00	250.00	52.3	
4	1633.1	39.96	288.51	1515.2	35.8	-489.6	3.00	54.33	479.6	
5	6499.8	39.96	288.51	5245.3	1028.3	-3453.7	0.00	0.00	3603.6	
6	7832.0	0.00	0.00	6472.0	1169.9	-3876.7	3.00	180.00	4049.3	
7	8532.0	0.00	0.00	7172.0	1169.9	-3876.7	0.00	0.00	4049.3	UWF04C-04 TGT
8	10335.8	0.43	239.45	8975.8	1166.5	-3882.5	0.02	239.45	4053.9	
9	12080.0	0.43	239.45	10720.0	1159.9	-3893.7	0.00	0.00	4062.8	UWF04C-04 BHL
10	13000.0	0.43	239.45	11640.0	1156.4	-3899.6	0.00	0.00	4067.5	



Azimuths to True North  
 Magnetic North: 10.34°  
 Magnetic Field  
 Strength: 52206.2snT  
 Dip Angle: 65.81°  
 Date: 4/18/2012  
 Model: IGRF2010

FORMATION TOP DETAILS

No formation data is available

Type TD	Target No Target (Freehand)	Azimuth 286.52	Origin Type Slot	N/S 0.0	E/W 0.0	From TVD 0.0
Name	TVD	+N/-S	+E/-W	Latitude	Longitude	
UWF04C-04 TGT	7172.0	1169.9	-3876.7	39° 38' 57.93 N	108° 10' 43.33 W	
UWF04C-04 BHL	10720.0	1159.9	-3893.7	39° 38' 57.83 N	108° 10' 43.55 W	

# Cathedral Energy Services

## Planning Report

<b>Database:</b> USA EDM 5000 Multi Users DB	<b>Local Co-ordinate Reference:</b> Well UWF04C-04 H04 596
<b>Company:</b> EnCana Oil & Gas (USA) Inc	<b>TVD Reference:</b> KBE @ 8293.0ft (Original Well Elev)
<b>Project:</b> North Piceance	<b>MD Reference:</b> KBE @ 8293.0ft (Original Well Elev)
<b>Site:</b> H04 Pad	<b>North Reference:</b> True
<b>Well:</b> UWF04C-04 H04 596	<b>Survey Calculation Method:</b> Minimum Curvature
<b>Wellbore:</b> DD	
<b>Design:</b> Plan #1	

<b>Project</b> North Piceance		
<b>Map System:</b> US State Plane 1983	<b>System Datum:</b> Mean Sea Level	
<b>Geo Datum:</b> North American Datum 1983		
<b>Map Zone:</b> Colorado Central Zone		

<b>Site</b> H04 Pad					
<b>Site Position:</b>		<b>Northing:</b>	1,671,070.85 ft	<b>Latitude:</b>	39° 38' 44.37 N
<b>From:</b>	Lat/Long	<b>Easting:</b>	2,249,607.93 ft	<b>Longitude:</b>	108° 9' 54.50 W
<b>Position Uncertainty:</b>	0.0 ft	<b>Slot Radius:</b>	13.200 in	<b>Grid Convergence:</b>	-1.68 °

<b>Well</b> UWF04C-04 H04 596					
<b>Well Position</b>	<b>+N/-S</b>	0.0 ft	<b>Northing:</b>	1,671,271.44 ft	<b>Latitude:</b> 39° 38' 46.37 N
	<b>+E/-W</b>	0.0 ft	<b>Easting:</b>	2,249,670.94 ft	<b>Longitude:</b> 108° 9' 53.77 W
<b>Position Uncertainty</b>		0.0 ft	<b>Wellhead Elevation:</b>	ft	<b>Ground Level:</b> 8,260.0 ft

<b>Wellbore</b> DD					
<b>Magnetics</b>	<b>Model Name</b>	<b>Sample Date</b>	<b>Declination</b>	<b>Dip Angle</b>	<b>Field Strength</b>
	IGRF2010	4/18/2012	(°)	(°)	(nT)
			10.34	65.81	52,206

<b>Design</b> Plan #1				
<b>Audit Notes:</b>				
<b>Version:</b>	<b>Phase:</b>	PLAN	<b>Tie On Depth:</b>	0.0
<b>Vertical Section:</b>	<b>Depth From (TVD)</b>	<b>+N/-S</b>	<b>+E/-W</b>	<b>Direction</b>
	(ft)	(ft)	(ft)	(°)
	0.0	0.0	0.0	286.52

<b>Plan Sections</b>										
Measured Depth (ft)	Inclination (°)	Azimuth (°)	Vertical Depth (ft)	+N/-S (ft)	+E/-W (ft)	Dogleg Rate (°/100ft)	Build Rate (°/100ft)	Turn Rate (°/100ft)	TFO (°)	Target
0.0	0.00	0.00	0.0	0.0	0.0	0.00	0.00	0.00	0.00	
150.0	0.00	0.00	150.0	0.0	0.0	0.00	0.00	0.00	0.00	
650.0	15.00	250.00	644.3	-22.3	-61.2	3.00	3.00	0.00	250.00	
1,633.1	39.96	288.51	1,515.2	35.8	-489.6	3.00	2.54	3.92	54.33	
6,499.8	39.96	288.51	5,245.3	1,028.3	-3,453.7	0.00	0.00	0.00	0.00	
7,832.0	0.00	0.00	6,472.0	1,169.9	-3,876.7	3.00	-3.00	0.00	180.00	
8,532.0	0.00	0.00	7,172.0	1,169.9	-3,876.7	0.00	0.00	0.00	0.00	UWF04C-04 TGT
10,335.8	0.43	239.45	8,975.8	1,166.5	-3,882.5	0.02	0.02	-6.68	239.45	
12,080.0	0.43	239.45	10,720.0	1,159.9	-3,893.7	0.00	0.00	0.00	0.00	UWF04C-04 BHL
13,000.0	0.43	239.45	11,640.0	1,156.4	-3,899.6	0.00	0.00	0.00	0.00	

# Cathedral Energy Services

## Planning Report

<b>Database:</b>	USA EDM 5000 Multi Users DB	<b>Local Co-ordinate Reference:</b>	Well UWF04C-04 H04 596
<b>Company:</b>	EnCana Oil & Gas (USA) Inc	<b>TVD Reference:</b>	KBE @ 8293.0ft (Original Well Elev)
<b>Project:</b>	North Piceance	<b>MD Reference:</b>	KBE @ 8293.0ft (Original Well Elev)
<b>Site:</b>	H04 Pad	<b>North Reference:</b>	True
<b>Well:</b>	UWF04C-04 H04 596	<b>Survey Calculation Method:</b>	Minimum Curvature
<b>Wellbore:</b>	DD		
<b>Design:</b>	Plan #1		

### Planned Survey

Measured Depth (ft)	Inclination (°)	Azimuth (°)	Vertical Depth (ft)	+N/-S (ft)	+E/-W (ft)	Vertical Section (ft)	Dogleg Rate (°/100ft)	Build Rate (°/100ft)	Comments / Formations
0.0	0.00	0.00	0.0	0.0	0.0	0.0	0.00	0.00	
100.0	0.00	0.00	100.0	0.0	0.0	0.0	0.00	0.00	
150.0	0.00	0.00	150.0	0.0	0.0	0.0	0.00	0.00	KOP @ 150'
200.0	1.50	250.00	200.0	-0.2	-0.6	0.5	3.00	3.00	
300.0	4.50	250.00	299.8	-2.0	-5.5	4.7	3.00	3.00	
400.0	7.50	250.00	399.3	-5.6	-15.4	13.1	3.00	3.00	
500.0	10.50	250.00	498.0	-10.9	-30.1	25.7	3.00	3.00	
600.0	13.50	250.00	595.8	-18.0	-49.6	42.4	3.00	3.00	
650.0	15.00	250.00	644.3	-22.3	-61.2	52.3	3.00	3.00	Start DLS 3.00 TFO 54.33
700.0	15.92	254.45	692.5	-26.3	-73.8	63.3	3.00	1.84	
800.0	17.99	261.91	788.2	-32.2	-102.3	89.0	3.00	2.07	
900.0	20.29	267.81	882.6	-35.0	-135.0	119.4	3.00	2.30	
1,000.0	22.74	272.52	975.7	-34.8	-171.6	154.6	3.00	2.46	
1,100.0	25.31	276.33	1,067.0	-31.6	-212.2	194.4	3.00	2.57	
1,200.0	27.96	279.48	1,156.4	-25.4	-256.6	238.8	3.00	2.65	
1,300.0	30.67	282.12	1,243.6	-16.2	-304.6	287.5	3.00	2.71	
1,400.0	33.42	284.36	1,328.3	-4.0	-356.2	340.4	3.00	2.75	
1,500.0	36.21	286.30	1,410.4	11.1	-411.3	397.5	3.00	2.79	
1,600.0	39.03	288.00	1,489.6	29.2	-469.6	458.5	3.00	2.82	
1,633.1	39.96	288.51	1,515.2	35.8	-489.6	479.6	3.00	2.83	EOB @ Inc. = 39.96°
1,700.0	39.96	288.51	1,566.5	49.4	-530.3	522.5	0.00	0.00	
1,800.0	39.96	288.51	1,643.1	69.8	-591.2	586.7	0.00	0.00	
1,900.0	39.96	288.51	1,719.7	90.2	-652.1	650.9	0.00	0.00	
2,000.0	39.96	288.51	1,796.4	110.6	-713.1	715.1	0.00	0.00	
2,100.0	39.96	288.51	1,873.0	131.0	-774.0	779.3	0.00	0.00	
2,200.0	39.96	288.51	1,949.7	151.4	-834.9	843.5	0.00	0.00	
2,300.0	39.96	288.51	2,026.3	171.8	-895.8	907.6	0.00	0.00	
2,400.0	39.96	288.51	2,103.0	192.2	-956.7	971.8	0.00	0.00	
2,500.0	39.96	288.51	2,179.6	212.6	-1,017.6	1,036.0	0.00	0.00	
2,600.0	39.96	288.51	2,256.3	233.0	-1,078.5	1,100.2	0.00	0.00	
2,700.0	39.96	288.51	2,332.9	253.3	-1,139.4	1,164.4	0.00	0.00	
2,800.0	39.96	288.51	2,409.5	273.7	-1,200.3	1,228.6	0.00	0.00	
2,900.0	39.96	288.51	2,486.2	294.1	-1,261.2	1,292.8	0.00	0.00	
3,000.0	39.96	288.51	2,562.8	314.5	-1,322.1	1,357.0	0.00	0.00	
3,100.0	39.96	288.51	2,639.5	334.9	-1,383.0	1,421.2	0.00	0.00	
3,200.0	39.96	288.51	2,716.1	355.3	-1,443.9	1,485.4	0.00	0.00	
3,300.0	39.96	288.51	2,792.8	375.7	-1,504.8	1,549.6	0.00	0.00	
3,400.0	39.96	288.51	2,869.4	396.1	-1,565.7	1,613.7	0.00	0.00	
3,500.0	39.96	288.51	2,946.1	416.5	-1,626.7	1,677.9	0.00	0.00	
3,600.0	39.96	288.51	3,022.7	436.9	-1,687.6	1,742.1	0.00	0.00	
3,700.0	39.96	288.51	3,099.4	457.3	-1,748.5	1,806.3	0.00	0.00	
3,800.0	39.96	288.51	3,176.0	477.7	-1,809.4	1,870.5	0.00	0.00	
3,900.0	39.96	288.51	3,252.6	498.1	-1,870.3	1,934.7	0.00	0.00	
4,000.0	39.96	288.51	3,329.3	518.5	-1,931.2	1,998.9	0.00	0.00	
4,100.0	39.96	288.51	3,405.9	538.9	-1,992.1	2,063.1	0.00	0.00	
4,200.0	39.96	288.51	3,482.6	559.3	-2,053.0	2,127.3	0.00	0.00	
4,300.0	39.96	288.51	3,559.2	579.6	-2,113.9	2,191.5	0.00	0.00	
4,400.0	39.96	288.51	3,635.9	600.0	-2,174.8	2,255.7	0.00	0.00	
4,500.0	39.96	288.51	3,712.5	620.4	-2,235.7	2,319.8	0.00	0.00	
4,600.0	39.96	288.51	3,789.2	640.8	-2,296.6	2,384.0	0.00	0.00	
4,700.0	39.96	288.51	3,865.8	661.2	-2,357.5	2,448.2	0.00	0.00	
4,800.0	39.96	288.51	3,942.5	681.6	-2,418.4	2,512.4	0.00	0.00	

# Cathedral Energy Services

## Planning Report

<b>Database:</b>	USA EDM 5000 Multi Users DB	<b>Local Co-ordinate Reference:</b>	Well UWF04C-04 H04 596
<b>Company:</b>	EnCana Oil & Gas (USA) Inc	<b>TVD Reference:</b>	KBE @ 8293.0ft (Original Well Elev)
<b>Project:</b>	North Piceance	<b>MD Reference:</b>	KBE @ 8293.0ft (Original Well Elev)
<b>Site:</b>	H04 Pad	<b>North Reference:</b>	True
<b>Well:</b>	UWF04C-04 H04 596	<b>Survey Calculation Method:</b>	Minimum Curvature
<b>Wellbore:</b>	DD		
<b>Design:</b>	Plan #1		

Planned Survey									
Measured Depth (ft)	Inclination (°)	Azimuth (°)	Vertical Depth (ft)	+N/-S (ft)	+E/-W (ft)	Vertical Section (ft)	Dogleg Rate (°/100ft)	Build Rate (°/100ft)	Comments / Formations
4,900.0	39.96	288.51	4,019.1	702.0	-2,479.3	2,576.6	0.00	0.00	
5,000.0	39.96	288.51	4,095.7	722.4	-2,540.2	2,640.8	0.00	0.00	
5,100.0	39.96	288.51	4,172.4	742.8	-2,601.2	2,705.0	0.00	0.00	
5,200.0	39.96	288.51	4,249.0	763.2	-2,662.1	2,769.2	0.00	0.00	
5,300.0	39.96	288.51	4,325.7	783.6	-2,723.0	2,833.4	0.00	0.00	
5,400.0	39.96	288.51	4,402.3	804.0	-2,783.9	2,897.6	0.00	0.00	
5,500.0	39.96	288.51	4,479.0	824.4	-2,844.8	2,961.8	0.00	0.00	
5,600.0	39.96	288.51	4,555.6	844.8	-2,905.7	3,025.9	0.00	0.00	
5,700.0	39.96	288.51	4,632.3	865.2	-2,966.6	3,090.1	0.00	0.00	
5,800.0	39.96	288.51	4,708.9	885.6	-3,027.5	3,154.3	0.00	0.00	
5,900.0	39.96	288.51	4,785.6	905.9	-3,088.4	3,218.5	0.00	0.00	
6,000.0	39.96	288.51	4,862.2	926.3	-3,149.3	3,282.7	0.00	0.00	
6,100.0	39.96	288.51	4,938.8	946.7	-3,210.2	3,346.9	0.00	0.00	
6,200.0	39.96	288.51	5,015.5	967.1	-3,271.1	3,411.1	0.00	0.00	
6,300.0	39.96	288.51	5,092.1	987.5	-3,332.0	3,475.3	0.00	0.00	
6,400.0	39.96	288.51	5,168.8	1,007.9	-3,392.9	3,539.5	0.00	0.00	
6,499.8	39.96	288.51	5,245.3	1,028.3	-3,453.7	3,603.6	0.00	0.00	Start 3° Drop
6,600.0	36.96	288.51	5,323.7	1,048.1	-3,512.8	3,665.8	3.00	-3.00	
6,700.0	33.96	288.51	5,405.2	1,066.5	-3,567.8	3,723.8	3.00	-3.00	
6,800.0	30.96	288.51	5,489.5	1,083.5	-3,618.7	3,777.4	3.00	-3.00	
6,900.0	27.96	288.51	5,576.6	1,099.1	-3,665.3	3,826.6	3.00	-3.00	
7,000.0	24.96	288.51	5,666.1	1,113.3	-3,707.6	3,871.1	3.00	-3.00	
7,100.0	21.96	288.51	5,757.8	1,125.9	-3,745.3	3,910.9	3.00	-3.00	
7,200.0	18.96	288.51	5,851.5	1,137.0	-3,778.5	3,945.8	3.00	-3.00	
7,300.0	15.96	288.51	5,946.9	1,146.5	-3,806.9	3,975.8	3.00	-3.00	
7,400.0	12.96	288.51	6,043.7	1,154.5	-3,830.6	4,000.7	3.00	-3.00	
7,500.0	9.96	288.51	6,141.7	1,160.8	-3,849.4	4,020.6	3.00	-3.00	
7,600.0	6.96	288.51	6,240.6	1,165.4	-3,863.4	4,035.3	3.00	-3.00	
7,700.0	3.96	288.51	6,340.2	1,168.5	-3,872.4	4,044.8	3.00	-3.00	
7,800.0	0.96	288.51	6,440.1	1,169.8	-3,876.4	4,049.1	3.00	-3.00	
7,832.0	0.00	0.00	6,472.0	1,169.9	-3,876.7	4,049.3	3.00	-3.00	EOD @ Inc. = 0°
7,900.0	0.00	0.00	6,540.0	1,169.9	-3,876.7	4,049.3	0.00	0.00	
8,000.0	0.00	0.00	6,640.0	1,169.9	-3,876.7	4,049.3	0.00	0.00	
8,100.0	0.00	0.00	6,740.0	1,169.9	-3,876.7	4,049.3	0.00	0.00	
8,200.0	0.00	0.00	6,840.0	1,169.9	-3,876.7	4,049.3	0.00	0.00	
8,300.0	0.00	0.00	6,940.0	1,169.9	-3,876.7	4,049.3	0.00	0.00	
8,400.0	0.00	0.00	7,040.0	1,169.9	-3,876.7	4,049.3	0.00	0.00	
8,500.0	0.00	0.00	7,140.0	1,169.9	-3,876.7	4,049.3	0.00	0.00	
8,532.0	0.00	0.00	7,172.0	1,169.9	-3,876.7	4,049.3	0.00	0.00	
8,600.0	0.02	239.45	7,240.0	1,169.9	-3,876.7	4,049.3	0.02	0.02	
8,700.0	0.04	239.45	7,340.0	1,169.9	-3,876.8	4,049.4	0.02	0.02	
8,800.0	0.06	239.45	7,440.0	1,169.8	-3,876.8	4,049.4	0.02	0.02	
8,900.0	0.09	239.45	7,540.0	1,169.8	-3,876.9	4,049.5	0.02	0.02	
9,000.0	0.11	239.45	7,640.0	1,169.7	-3,877.1	4,049.6	0.02	0.02	
9,100.0	0.13	239.45	7,740.0	1,169.6	-3,877.3	4,049.8	0.02	0.02	
9,200.0	0.16	239.45	7,840.0	1,169.4	-3,877.5	4,050.0	0.02	0.02	
9,300.0	0.18	239.45	7,940.0	1,169.3	-3,877.8	4,050.2	0.02	0.02	
9,400.0	0.21	239.45	8,040.0	1,169.1	-3,878.0	4,050.4	0.02	0.02	
9,500.0	0.23	239.45	8,140.0	1,168.9	-3,878.4	4,050.7	0.02	0.02	
9,600.0	0.25	239.45	8,240.0	1,168.7	-3,878.7	4,050.9	0.02	0.02	
9,700.0	0.28	239.45	8,340.0	1,168.5	-3,879.1	4,051.3	0.02	0.02	
9,800.0	0.30	239.45	8,440.0	1,168.2	-3,879.6	4,051.6	0.02	0.02	

# Cathedral Energy Services

## Planning Report

<b>Database:</b>	USA EDM 5000 Multi Users DB	<b>Local Co-ordinate Reference:</b>	Well UWF04C-04 H04 596
<b>Company:</b>	EnCana Oil & Gas (USA) Inc	<b>TVD Reference:</b>	KBE @ 8293.0ft (Original Well Elev)
<b>Project:</b>	North Piceance	<b>MD Reference:</b>	KBE @ 8293.0ft (Original Well Elev)
<b>Site:</b>	H04 Pad	<b>North Reference:</b>	True
<b>Well:</b>	UWF04C-04 H04 596	<b>Survey Calculation Method:</b>	Minimum Curvature
<b>Wellbore:</b>	DD		
<b>Design:</b>	Plan #1		

Planned Survey									
Measured Depth (ft)	Inclination (°)	Azimuth (°)	Vertical Depth (ft)	+N/-S (ft)	+E/-W (ft)	Vertical Section (ft)	Dogleg Rate (°/100ft)	Build Rate (°/100ft)	Comments / Formations
9,900.0	0.32	239.45	8,540.0	1,167.9	-3,880.0	4,052.0	0.02	0.02	
10,000.0	0.35	239.45	8,640.0	1,167.6	-3,880.5	4,052.4	0.02	0.02	
10,100.0	0.37	239.45	8,740.0	1,167.3	-3,881.1	4,052.8	0.02	0.02	
10,200.0	0.40	239.45	8,840.0	1,167.0	-3,881.7	4,053.3	0.02	0.02	
10,300.0	0.42	239.45	8,940.0	1,166.6	-3,882.3	4,053.7	0.02	0.02	
10,335.8	0.43	239.45	8,975.8	1,166.5	-3,882.5	4,053.9	0.02	0.02	
10,400.0	0.43	239.45	9,040.0	1,166.2	-3,882.9	4,054.2	0.00	0.00	
10,500.0	0.43	239.45	9,140.0	1,165.9	-3,883.6	4,054.8	0.00	0.00	
10,600.0	0.43	239.45	9,240.0	1,165.5	-3,884.2	4,055.3	0.00	0.00	
10,700.0	0.43	239.45	9,340.0	1,165.1	-3,884.8	4,055.8	0.00	0.00	
10,800.0	0.43	239.45	9,440.0	1,164.7	-3,885.5	4,056.3	0.00	0.00	
10,900.0	0.43	239.45	9,540.0	1,164.3	-3,886.1	4,056.8	0.00	0.00	
11,000.0	0.43	239.45	9,640.0	1,164.0	-3,886.8	4,057.3	0.00	0.00	
11,100.0	0.43	239.45	9,740.0	1,163.6	-3,887.4	4,057.8	0.00	0.00	
11,200.0	0.43	239.45	9,840.0	1,163.2	-3,888.1	4,058.3	0.00	0.00	
11,300.0	0.43	239.45	9,940.0	1,162.8	-3,888.7	4,058.8	0.00	0.00	
11,400.0	0.43	239.45	10,040.0	1,162.4	-3,889.3	4,059.3	0.00	0.00	
11,500.0	0.43	239.45	10,140.0	1,162.1	-3,890.0	4,059.8	0.00	0.00	
11,600.0	0.43	239.45	10,240.0	1,161.7	-3,890.6	4,060.3	0.00	0.00	
11,700.0	0.43	239.45	10,340.0	1,161.3	-3,891.3	4,060.9	0.00	0.00	
11,800.0	0.43	239.45	10,440.0	1,160.9	-3,891.9	4,061.4	0.00	0.00	
11,900.0	0.43	239.45	10,540.0	1,160.5	-3,892.6	4,061.9	0.00	0.00	
12,000.0	0.43	239.45	10,640.0	1,160.2	-3,893.2	4,062.4	0.00	0.00	
12,080.0	0.43	239.45	10,720.0	1,159.9	-3,893.7	4,062.8	0.00	0.00	TD @ 12,080' MD
12,100.0	0.43	239.45	10,740.0	1,159.8	-3,893.8	4,062.9	0.00	0.00	
12,200.0	0.43	239.45	10,840.0	1,159.4	-3,894.5	4,063.4	0.00	0.00	
12,300.0	0.43	239.45	10,940.0	1,159.0	-3,895.1	4,063.9	0.00	0.00	
12,400.0	0.43	239.45	11,040.0	1,158.6	-3,895.8	4,064.4	0.00	0.00	
12,500.0	0.43	239.45	11,140.0	1,158.3	-3,896.4	4,064.9	0.00	0.00	
12,600.0	0.43	239.45	11,240.0	1,157.9	-3,897.1	4,065.4	0.00	0.00	
12,700.0	0.43	239.45	11,340.0	1,157.5	-3,897.7	4,065.9	0.00	0.00	
12,800.0	0.43	239.45	11,440.0	1,157.1	-3,898.3	4,066.4	0.00	0.00	
12,900.0	0.43	239.45	11,540.0	1,156.7	-3,899.0	4,067.0	0.00	0.00	
13,000.0	0.43	239.45	11,640.0	1,156.4	-3,899.6	4,067.5	0.00	0.00	Permit TD @ 13,000' MD

Targets									
Target Name	Dip Angle (°)	Dip Dir. (°)	TVD (ft)	+N/-S (ft)	+E/-W (ft)	Northing (ft)	Easting (ft)	Latitude	Longitude
UWF04C-04 BHL - hit/miss target - Shape - Point	0.00	0.00	10,720.0	1,159.9	-3,893.7	1,672,545.01	2,245,812.93	39° 38' 57.83 N	108° 10' 43.55 W
UWF04C-04 TGT - plan hits target center - Point	0.00	0.00	7,172.0	1,169.9	-3,876.7	1,672,554.55	2,245,830.22	39° 38' 57.93 N	108° 10' 43.33 W

# Cathedral Energy Services

## Planning Report

<b>Database:</b>	USA EDM 5000 Multi Users DB	<b>Local Co-ordinate Reference:</b>	Well UWF04C-04 H04 596
<b>Company:</b>	EnCana Oil & Gas (USA) Inc	<b>TVD Reference:</b>	KBE @ 8293.0ft (Original Well Elev)
<b>Project:</b>	North Piceance	<b>MD Reference:</b>	KBE @ 8293.0ft (Original Well Elev)
<b>Site:</b>	H04 Pad	<b>North Reference:</b>	True
<b>Well:</b>	UWF04C-04 H04 596	<b>Survey Calculation Method:</b>	Minimum Curvature
<b>Wellbore:</b>	DD		
<b>Design:</b>	Plan #1		

Plan Annotations				
Measured Depth (ft)	Vertical Depth (ft)	Local Coordinates		Comment
		+N/-S (ft)	+E/-W (ft)	
150.0	150.0	0.0	0.0	KOP @ 150'
650.0	644.3	-22.3	-61.2	Start DLS 3.00 TFO 54.33
1,633.1	1,515.2	35.8	-489.6	EOB @ Inc. = 39.96°
6,499.8	5,245.3	1,028.3	-3,453.7	Start 3° Drop
7,832.0	6,472.0	1,169.9	-3,876.7	EOD @ Inc. = 0°
12,080.0	10,720.0	1,159.9	-3,893.7	TD @ 12,080' MD
13,000.0	11,640.0	1,156.4	-3,899.6	Permit TD @ 13,000' MD