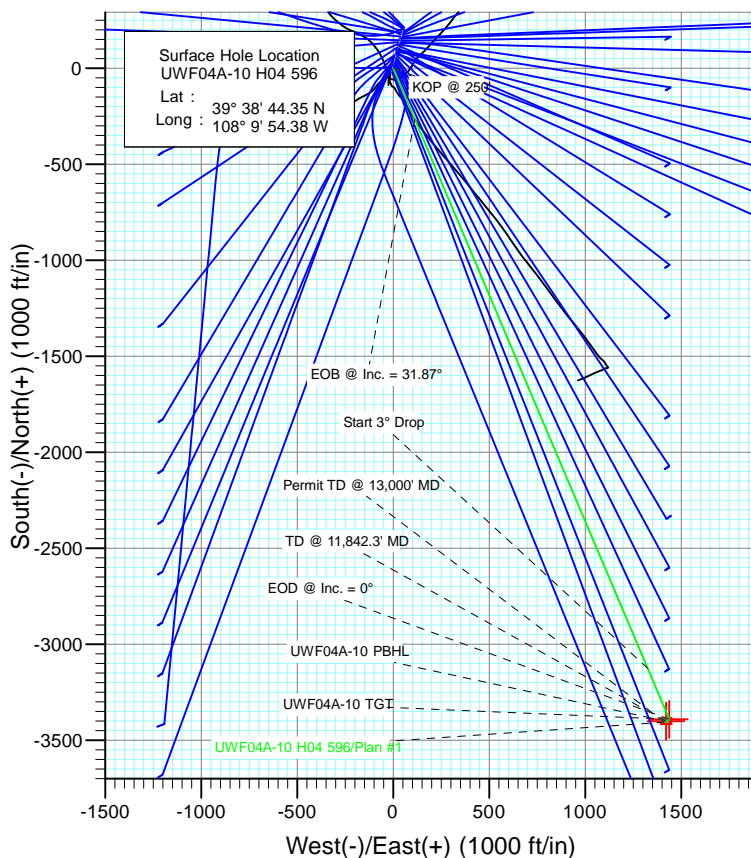


#### SECTION DETAILS

Sec	MD	Inc	Azi	TVD	+N/-S	+E/-W	Dleg	TFace	VSect	Target
1	0.0	0.00	0.00	0.0	0.0	0.0	0.00	0.00	0.0	
2	250.0	0.00	0.00	250.0	0.0	0.0	0.00	0.00	0.0	
3	1312.5	31.87	157.01	1258.5	-265.1	112.5	3.00	157.01	288.0	
4	7196.7	31.87	157.01	6255.5	-3125.6	1326.0	0.00	0.00	3395.1	
5	8259.2	0.00	0.00	7264.0	-3390.7	1438.5	3.00	180.00	3683.1	UWF04A-10 TGT
6	10067.3	0.42	239.56	9072.1	-3394.1	1432.8	0.02	239.56	3684.0	
7	11842.3	0.42	239.56	10847.0	-3400.7	1421.5	0.00	0.00	3685.8	UWF04A-10 PBHL
8	13000.0	0.42	239.56	12004.7	-3405.0	1414.1	0.00	0.00	3687.0	



Azimuths to True North  
Magnetic North: 10.34°

Magnetic Field  
Strength: 52205.9snT  
Dip Angle: 65.81°  
Date: 4/18/2012  
Model: IGRF2010

#### FORMATION TOP DETAILS

TVDPATH	MDPATH	Formation
1059.0	1085.4	A GROOVE
1220.0	1267.4	B GROOVE
1260.0	1314.2	B GROOVE BASE
2061.0	2257.5	GARDEN GULCH
3135.0	3522.2	WASATCH FM
5212.0	5968.0	WASATCH G
7264.0	8259.2	WILLIAMS FORK
10847.0	11842.3	ROLLINS
11091.0	12086.3	COZZETTE
11267.0	12262.3	CORCORAN
11562.0	12557.3	UPPER SEGO

Plan #1  
UWF04A-10 H04 596  
125XXX: SC  
KBE @ 8293.0ft (Original Well Elev)  
North American Datum 1983  
Well UWF04A-10 H04 596, True North

Type	Target	Azimuth	Origin	Type	N/S	E/W	From TVD
TD	No Target (Freehand)	157.45	Slot		0.0	0.0	0.0
Name		TVD	+N/-S	+E/-W	Latitude	Longitude	
UWF04A-10 TGT		7264.0	-3390.7	1438.5	39° 38' 10.84 N	108° 9' 35.99 W	
UWF04A-10 PBHL		10847.0	-3400.7	1421.5	39° 38' 10.74 N	108° 9' 36.21 W	

# Cathedral Energy Services

## Planning Report

<b>Database:</b>	USA EDM 5000 Multi Users DB	<b>Local Co-ordinate Reference:</b>	Well UWF04A-10 H04 596
<b>Company:</b>	EnCana Oil & Gas (USA) Inc	<b>TVD Reference:</b>	KBE @ 8293.0ft (Original Well Elev)
<b>Project:</b>	North Piceance	<b>MD Reference:</b>	KBE @ 8293.0ft (Original Well Elev)
<b>Site:</b>	H04 Pad	<b>North Reference:</b>	True
<b>Well:</b>	UWF04A-10 H04 596	<b>Survey Calculation Method:</b>	Minimum Curvature
<b>Wellbore:</b>	DD		
<b>Design:</b>	Plan #1		

<b>Project</b>	North Piceance		
<b>Map System:</b>	US State Plane 1983	<b>System Datum:</b>	Mean Sea Level
<b>Geo Datum:</b>	North American Datum 1983		
<b>Map Zone:</b>	Colorado Central Zone		

Site	H04 Pad				
Site Position:		Northing:	1,671,070.85 ft	Latitude:	39° 38' 44.37 N
From:	Lat/Long	Easting:	2,249,607.93 ft	Longitude:	108° 9' 54.50 W
Position Uncertainty:	0.0 ft	Slot Radius:	13.200 in	Grid Convergence:	-1.68 °

Well	UWF04A-10 H04 596					
Well Position	+N/-S	0.0 ft	Northing:	1,671,068.54 ft	Latitude:	39° 38' 44.35 N
	+E/-W	0.0 ft	Easting:	2,249,617.25 ft	Longitude:	108° 9' 54.38 W
Position Uncertainty		0.0 ft	Wellhead Elevation:	ft	Ground Level:	8,260.0 ft

<b>Wellbore</b>	DD				
<b>Magnetics</b>	<b>Model Name</b>	<b>Sample Date</b>	<b>Declination (°)</b>	<b>Dip Angle (°)</b>	<b>Field Strength (nT)</b>
	IGRF2010	4/18/2012	10.34	65.81	52,206

<b>Design</b>	Plan #1			
<b>Audit Notes:</b>				
<b>Version:</b>	<b>Phase:</b>	PLAN	<b>Tie On Depth:</b>	0.0
<b>Vertical Section:</b>	<b>Depth From (TVD) (ft)</b>	<b>+N/-S (ft)</b>	<b>+E/-W (ft)</b>	<b>Direction (°)</b>
	0.0	0.0	0.0	157.45

<b>Plan Sections</b>										
Measured Depth (ft)	Inclination (°)	Azimuth (°)	Vertical Depth (ft)	+N/-S (ft)	+E/-W (ft)	Dogleg Rate (°/100ft)	Build Rate (°/100ft)	Turn Rate (°/100ft)	TFO (°)	Target
0.0	0.00	0.00	0.0	0.0	0.0	0.00	0.00	0.00	0.00	
250.0	0.00	0.00	250.0	0.0	0.0	0.00	0.00	0.00	0.00	
1,312.5	31.87	157.01	1,258.5	-265.1	112.5	3.00	3.00	0.00	157.01	
7,196.7	31.87	157.01	6,255.5	-3,125.6	1,326.0	0.00	0.00	0.00	0.00	
8,259.2	0.00	0.00	7,264.0	-3,390.7	1,438.5	3.00	-3.00	0.00	180.00	UWF04A-10 TGT
10,067.3	0.42	239.56	9,072.1	-3,394.1	1,432.8	0.02	0.02	-6.66	239.56	
11,842.3	0.42	239.56	10,847.0	-3,400.7	1,421.5	0.00	0.00	0.00	0.00	UWF04A-10 PBHL
13,000.0	0.42	239.56	12,004.7	-3,405.0	1,414.1	0.00	0.00	0.00	0.00	

# Cathedral Energy Services

## Planning Report

<b>Database:</b>	USA EDM 5000 Multi Users DB	<b>Local Co-ordinate Reference:</b>	Well UWF04A-10 H04 596
<b>Company:</b>	EnCana Oil & Gas (USA) Inc	<b>TVD Reference:</b>	KBE @ 8293.0ft (Original Well Elev)
<b>Project:</b>	North Piceance	<b>MD Reference:</b>	KBE @ 8293.0ft (Original Well Elev)
<b>Site:</b>	H04 Pad	<b>North Reference:</b>	True
<b>Well:</b>	UWF04A-10 H04 596	<b>Survey Calculation Method:</b>	Minimum Curvature
<b>Wellbore:</b>	DD		
<b>Design:</b>	Plan #1		

### Planned Survey

Measured Depth (ft)	Inclination (°)	Azimuth (°)	Vertical Depth (ft)	+N/-S (ft)	+E/-W (ft)	Vertical Section (ft)	Dogleg Rate (°/100ft)	Build Rate (°/100ft)	Comments / Formations
0.0	0.00	0.00	0.0	0.0	0.0	0.0	0.00	0.00	
100.0	0.00	0.00	100.0	0.0	0.0	0.0	0.00	0.00	
200.0	0.00	0.00	200.0	0.0	0.0	0.0	0.00	0.00	
250.0	0.00	0.00	250.0	0.0	0.0	0.0	0.00	0.00	KOP @ 250'
300.0	1.50	157.01	300.0	-0.6	0.3	0.7	3.00	3.00	
400.0	4.50	157.01	399.8	-5.4	2.3	5.9	3.00	3.00	
500.0	7.50	157.01	499.3	-15.0	6.4	16.3	3.00	3.00	
600.0	10.50	157.01	598.0	-29.4	12.5	32.0	3.00	3.00	
700.0	13.50	157.01	695.8	-48.6	20.6	52.8	3.00	3.00	
800.0	16.50	157.01	792.4	-72.4	30.7	78.6	3.00	3.00	
900.0	19.50	157.01	887.5	-100.8	42.8	109.5	3.00	3.00	
1,000.0	22.50	157.01	980.9	-133.8	56.8	145.4	3.00	3.00	
1,085.4	25.06	157.01	1,059.0	-165.5	70.2	179.8	3.00	3.00	A GROOVE
1,100.0	25.50	157.01	1,072.2	-171.3	72.7	186.0	3.00	3.00	
1,200.0	28.50	157.01	1,161.3	-213.1	90.4	231.4	3.00	3.00	
1,267.4	30.52	157.01	1,220.0	-243.6	103.4	264.7	3.00	3.00	B GROOVE
1,300.0	31.50	157.01	1,247.9	-259.1	109.9	281.4	3.00	3.00	
1,312.5	31.87	157.01	1,258.5	-265.1	112.5	288.0	3.00	3.00	EOB @ Inc. = 31.87°
1,314.2	31.87	157.01	1,260.0	-266.0	112.8	288.9	0.00	0.00	B GROOVE BASE
1,400.0	31.87	157.01	1,332.8	-307.7	130.5	334.2	0.00	0.00	
1,500.0	31.87	157.01	1,417.8	-356.3	151.2	387.0	0.00	0.00	
1,600.0	31.87	157.01	1,502.7	-404.9	171.8	439.8	0.00	0.00	
1,700.0	31.87	157.01	1,587.6	-453.5	192.4	492.6	0.00	0.00	
1,800.0	31.87	157.01	1,672.5	-502.1	213.0	545.4	0.00	0.00	
1,900.0	31.87	157.01	1,757.4	-550.7	233.6	598.2	0.00	0.00	
2,000.0	31.87	157.01	1,842.4	-599.3	254.3	651.0	0.00	0.00	
2,100.0	31.87	157.01	1,927.3	-647.9	274.9	703.8	0.00	0.00	
2,200.0	31.87	157.01	2,012.2	-696.6	295.5	756.6	0.00	0.00	
2,257.5	31.87	157.01	2,061.0	-724.5	307.4	787.0	0.00	0.00	GARDEN GULCH
2,300.0	31.87	157.01	2,097.1	-745.2	316.1	809.4	0.00	0.00	
2,400.0	31.87	157.01	2,182.0	-793.8	336.8	862.2	0.00	0.00	
2,500.0	31.87	157.01	2,267.0	-842.4	357.4	915.0	0.00	0.00	
2,600.0	31.87	157.01	2,351.9	-891.0	378.0	967.9	0.00	0.00	
2,700.0	31.87	157.01	2,436.8	-939.6	398.6	1,020.7	0.00	0.00	
2,800.0	31.87	157.01	2,521.7	-988.2	419.3	1,073.5	0.00	0.00	
2,900.0	31.87	157.01	2,606.7	-1,036.8	439.9	1,126.3	0.00	0.00	
3,000.0	31.87	157.01	2,691.6	-1,085.5	460.5	1,179.1	0.00	0.00	
3,100.0	31.87	157.01	2,776.5	-1,134.1	481.1	1,231.9	0.00	0.00	
3,200.0	31.87	157.01	2,861.4	-1,182.7	501.8	1,284.7	0.00	0.00	
3,300.0	31.87	157.01	2,946.3	-1,231.3	522.4	1,337.5	0.00	0.00	
3,400.0	31.87	157.01	3,031.3	-1,279.9	543.0	1,390.3	0.00	0.00	
3,500.0	31.87	157.01	3,116.2	-1,328.5	563.6	1,443.1	0.00	0.00	
3,522.2	31.87	157.01	3,135.0	-1,339.3	568.2	1,454.8	0.00	0.00	WASATCH FM
3,600.0	31.87	157.01	3,201.1	-1,377.1	584.2	1,495.9	0.00	0.00	
3,700.0	31.87	157.01	3,286.0	-1,425.7	604.9	1,548.7	0.00	0.00	
3,800.0	31.87	157.01	3,370.9	-1,474.4	625.5	1,601.5	0.00	0.00	
3,900.0	31.87	157.01	3,455.9	-1,523.0	646.1	1,654.3	0.00	0.00	
4,000.0	31.87	157.01	3,540.8	-1,571.6	666.7	1,707.1	0.00	0.00	
4,100.0	31.87	157.01	3,625.7	-1,620.2	687.4	1,759.9	0.00	0.00	
4,200.0	31.87	157.01	3,710.6	-1,668.8	708.0	1,812.7	0.00	0.00	
4,300.0	31.87	157.01	3,795.5	-1,717.4	728.6	1,865.5	0.00	0.00	
4,400.0	31.87	157.01	3,880.5	-1,766.0	749.2	1,918.3	0.00	0.00	

# Cathedral Energy Services

## Planning Report

<b>Database:</b>	USA EDM 5000 Multi Users DB	<b>Local Co-ordinate Reference:</b>	Well UWF04A-10 H04 596
<b>Company:</b>	EnCana Oil & Gas (USA) Inc	<b>TVD Reference:</b>	KBE @ 8293.0ft (Original Well Elev)
<b>Project:</b>	North Piceance	<b>MD Reference:</b>	KBE @ 8293.0ft (Original Well Elev)
<b>Site:</b>	H04 Pad	<b>North Reference:</b>	True
<b>Well:</b>	UWF04A-10 H04 596	<b>Survey Calculation Method:</b>	Minimum Curvature
<b>Wellbore:</b>	DD		
<b>Design:</b>	Plan #1		

### Planned Survey

Measured Depth (ft)	Inclination (°)	Azimuth (°)	Vertical Depth (ft)	+N/-S (ft)	+E/-W (ft)	Vertical Section (ft)	Dogleg Rate (°/100ft)	Build Rate (°/100ft)	Comments / Formations
4,500.0	31.87	157.01	3,965.4	-1,814.6	769.9	1,971.1	0.00	0.00	
4,600.0	31.87	157.01	4,050.3	-1,863.2	790.5	2,023.9	0.00	0.00	
4,700.0	31.87	157.01	4,135.2	-1,911.9	811.1	2,076.7	0.00	0.00	
4,800.0	31.87	157.01	4,220.1	-1,960.5	831.7	2,129.5	0.00	0.00	
4,900.0	31.87	157.01	4,305.1	-2,009.1	852.4	2,182.3	0.00	0.00	
5,000.0	31.87	157.01	4,390.0	-2,057.7	873.0	2,235.2	0.00	0.00	
5,100.0	31.87	157.01	4,474.9	-2,106.3	893.6	2,288.0	0.00	0.00	
5,200.0	31.87	157.01	4,559.8	-2,154.9	914.2	2,340.8	0.00	0.00	
5,300.0	31.87	157.01	4,644.8	-2,203.5	934.9	2,393.6	0.00	0.00	
5,400.0	31.87	157.01	4,729.7	-2,252.1	955.5	2,446.4	0.00	0.00	
5,500.0	31.87	157.01	4,814.6	-2,300.8	976.1	2,499.2	0.00	0.00	
5,600.0	31.87	157.01	4,899.5	-2,349.4	996.7	2,552.0	0.00	0.00	
5,700.0	31.87	157.01	4,984.4	-2,398.0	1,017.3	2,604.8	0.00	0.00	
5,800.0	31.87	157.01	5,069.4	-2,446.6	1,038.0	2,657.6	0.00	0.00	
5,900.0	31.87	157.01	5,154.3	-2,495.2	1,058.6	2,710.4	0.00	0.00	
5,968.0	31.87	157.01	5,212.0	-2,528.2	1,072.6	2,746.3	0.00	0.00	WASATCH G
6,000.0	31.87	157.01	5,239.2	-2,543.8	1,079.2	2,763.2	0.00	0.00	
6,100.0	31.87	157.01	5,324.1	-2,592.4	1,099.8	2,816.0	0.00	0.00	
6,200.0	31.87	157.01	5,409.0	-2,641.0	1,120.5	2,868.8	0.00	0.00	
6,300.0	31.87	157.01	5,494.0	-2,689.6	1,141.1	2,921.6	0.00	0.00	
6,400.0	31.87	157.01	5,578.9	-2,738.3	1,161.7	2,974.4	0.00	0.00	
6,500.0	31.87	157.01	5,663.8	-2,786.9	1,182.3	3,027.2	0.00	0.00	
6,600.0	31.87	157.01	5,748.7	-2,835.5	1,203.0	3,080.0	0.00	0.00	
6,700.0	31.87	157.01	5,833.6	-2,884.1	1,223.6	3,132.8	0.00	0.00	
6,800.0	31.87	157.01	5,918.6	-2,932.7	1,244.2	3,185.6	0.00	0.00	
6,900.0	31.87	157.01	6,003.5	-2,981.3	1,264.8	3,238.4	0.00	0.00	
7,000.0	31.87	157.01	6,088.4	-3,029.9	1,285.5	3,291.2	0.00	0.00	
7,100.0	31.87	157.01	6,173.3	-3,078.5	1,306.1	3,344.0	0.00	0.00	
7,196.7	31.87	157.01	6,255.5	-3,125.6	1,326.0	3,395.1	0.00	0.00	Start 3° Drop
7,200.0	31.78	157.01	6,258.2	-3,127.2	1,326.7	3,396.8	3.00	-3.00	
7,300.0	28.78	157.01	6,344.6	-3,173.6	1,346.4	3,447.3	3.00	-3.00	
7,400.0	25.78	157.01	6,433.5	-3,215.7	1,364.3	3,493.1	3.00	-3.00	
7,500.0	22.78	157.01	6,524.6	-3,253.6	1,380.3	3,534.2	3.00	-3.00	
7,600.0	19.78	157.01	6,617.8	-3,287.0	1,394.5	3,570.5	3.00	-3.00	
7,700.0	16.78	157.01	6,712.7	-3,315.9	1,406.8	3,601.8	3.00	-3.00	
7,800.0	13.78	157.01	6,809.2	-3,340.1	1,417.1	3,628.2	3.00	-3.00	
7,900.0	10.78	157.01	6,906.9	-3,359.7	1,425.4	3,649.4	3.00	-3.00	
8,000.0	7.78	157.01	7,005.6	-3,374.5	1,431.6	3,665.5	3.00	-3.00	
8,100.0	4.78	157.01	7,105.0	-3,384.6	1,435.9	3,676.5	3.00	-3.00	
8,200.0	1.78	157.01	7,204.8	-3,389.8	1,438.2	3,682.2	3.00	-3.00	
8,259.2	0.00	0.00	7,264.0	-3,390.7	1,438.5	3,683.1	3.00	-3.00	EOD @ Inc. = 0° - WILLIAMS FORK
8,300.0	0.01	239.56	7,304.8	-3,390.7	1,438.5	3,683.1	0.02	0.02	
8,400.0	0.03	239.56	7,404.8	-3,390.7	1,438.5	3,683.1	0.02	0.02	
8,500.0	0.06	239.56	7,504.8	-3,390.8	1,438.4	3,683.1	0.02	0.02	
8,600.0	0.08	239.56	7,604.8	-3,390.8	1,438.3	3,683.1	0.02	0.02	
8,700.0	0.10	239.56	7,704.8	-3,390.9	1,438.2	3,683.2	0.02	0.02	
8,800.0	0.13	239.56	7,804.8	-3,391.0	1,438.0	3,683.2	0.02	0.02	
8,900.0	0.15	239.56	7,904.8	-3,391.1	1,437.8	3,683.2	0.02	0.02	
9,000.0	0.17	239.56	8,004.8	-3,391.3	1,437.5	3,683.3	0.02	0.02	
9,100.0	0.20	239.56	8,104.8	-3,391.4	1,437.3	3,683.3	0.02	0.02	
9,200.0	0.22	239.56	8,204.8	-3,391.6	1,437.0	3,683.4	0.02	0.02	
9,300.0	0.24	239.56	8,304.8	-3,391.8	1,436.6	3,683.4	0.02	0.02	

# Cathedral Energy Services

## Planning Report

<b>Database:</b>	USA EDM 5000 Multi Users DB	<b>Local Co-ordinate Reference:</b>	Well UWF04A-10 H04 596
<b>Company:</b>	EnCana Oil & Gas (USA) Inc	<b>TVD Reference:</b>	KBE @ 8293.0ft (Original Well Elev)
<b>Project:</b>	North Piceance	<b>MD Reference:</b>	KBE @ 8293.0ft (Original Well Elev)
<b>Site:</b>	H04 Pad	<b>North Reference:</b>	True
<b>Well:</b>	UWF04A-10 H04 596	<b>Survey Calculation Method:</b>	Minimum Curvature
<b>Wellbore:</b>	DD		
<b>Design:</b>	Plan #1		

Planned Survey									
Measured Depth (ft)	Inclination (°)	Azimuth (°)	Vertical Depth (ft)	+N/-S (ft)	+E/-W (ft)	Vertical Section (ft)	Dogleg Rate (°/100ft)	Build Rate (°/100ft)	Comments / Formations
9,400.0	0.27	239.56	8,404.8	-3,392.0	1,436.2	3,683.5	0.02	0.02	
9,500.0	0.29	239.56	8,504.8	-3,392.3	1,435.8	3,683.5	0.02	0.02	
9,600.0	0.31	239.56	8,604.8	-3,392.5	1,435.4	3,683.6	0.02	0.02	
9,700.0	0.34	239.56	8,704.8	-3,392.8	1,434.9	3,683.7	0.02	0.02	
9,800.0	0.36	239.56	8,804.8	-3,393.1	1,434.3	3,683.8	0.02	0.02	
9,900.0	0.38	239.56	8,904.8	-3,393.5	1,433.8	3,683.9	0.02	0.02	
10,000.0	0.41	239.56	9,004.8	-3,393.8	1,433.2	3,684.0	0.02	0.02	
10,067.3	0.42	239.56	9,072.1	-3,394.1	1,432.8	3,684.0	0.02	0.02	
10,100.0	0.42	239.56	9,104.8	-3,394.2	1,432.6	3,684.1	0.00	0.00	
10,200.0	0.42	239.56	9,204.8	-3,394.6	1,431.9	3,684.2	0.00	0.00	
10,300.0	0.42	239.56	9,304.8	-3,394.9	1,431.3	3,684.3	0.00	0.00	
10,400.0	0.42	239.56	9,404.8	-3,395.3	1,430.7	3,684.4	0.00	0.00	
10,500.0	0.42	239.56	9,504.7	-3,395.7	1,430.0	3,684.5	0.00	0.00	
10,600.0	0.42	239.56	9,604.7	-3,396.1	1,429.4	3,684.6	0.00	0.00	
10,700.0	0.42	239.56	9,704.7	-3,396.4	1,428.7	3,684.7	0.00	0.00	
10,800.0	0.42	239.56	9,804.7	-3,396.8	1,428.1	3,684.8	0.00	0.00	
10,900.0	0.42	239.56	9,904.7	-3,397.2	1,427.5	3,684.9	0.00	0.00	
11,000.0	0.42	239.56	10,004.7	-3,397.5	1,426.8	3,685.0	0.00	0.00	
11,100.0	0.42	239.56	10,104.7	-3,397.9	1,426.2	3,685.1	0.00	0.00	
11,200.0	0.42	239.56	10,204.7	-3,398.3	1,425.6	3,685.2	0.00	0.00	
11,300.0	0.42	239.56	10,304.7	-3,398.7	1,424.9	3,685.3	0.00	0.00	
11,400.0	0.42	239.56	10,404.7	-3,399.0	1,424.3	3,685.4	0.00	0.00	
11,500.0	0.42	239.56	10,504.7	-3,399.4	1,423.7	3,685.5	0.00	0.00	
11,600.0	0.42	239.56	10,604.7	-3,399.8	1,423.0	3,685.6	0.00	0.00	
11,700.0	0.42	239.56	10,704.7	-3,400.2	1,422.4	3,685.7	0.00	0.00	
11,800.0	0.42	239.56	10,804.7	-3,400.5	1,421.8	3,685.8	0.00	0.00	
11,842.3	0.42	239.56	10,847.0	-3,400.7	1,421.5	3,685.8	0.00	0.00	TD @ 11,842.3' MD - ROLLINS
11,900.0	0.42	239.56	10,904.7	-3,400.9	1,421.1	3,685.9	0.00	0.00	
12,000.0	0.42	239.56	11,004.7	-3,401.3	1,420.5	3,686.0	0.00	0.00	
12,086.3	0.42	239.56	11,091.0	-3,401.6	1,419.9	3,686.1	0.00	0.00	COZZETTE
12,100.0	0.42	239.56	11,104.7	-3,401.7	1,419.9	3,686.1	0.00	0.00	
12,200.0	0.42	239.56	11,204.7	-3,402.0	1,419.2	3,686.2	0.00	0.00	
12,262.3	0.42	239.56	11,267.0	-3,402.3	1,418.8	3,686.2	0.00	0.00	CORCORAN
12,300.0	0.42	239.56	11,304.7	-3,402.4	1,418.6	3,686.3	0.00	0.00	
12,400.0	0.42	239.56	11,404.7	-3,402.8	1,417.9	3,686.4	0.00	0.00	
12,500.0	0.42	239.56	11,504.7	-3,403.1	1,417.3	3,686.5	0.00	0.00	
12,557.3	0.42	239.56	11,562.0	-3,403.4	1,416.9	3,686.5	0.00	0.00	UPPER SEGO
12,600.0	0.42	239.56	11,604.7	-3,403.5	1,416.7	3,686.6	0.00	0.00	
12,700.0	0.42	239.56	11,704.7	-3,403.9	1,416.0	3,686.7	0.00	0.00	
12,800.0	0.42	239.56	11,804.7	-3,404.3	1,415.4	3,686.8	0.00	0.00	
12,900.0	0.42	239.56	11,904.7	-3,404.6	1,414.8	3,686.9	0.00	0.00	
13,000.0	0.42	239.56	12,004.7	-3,405.0	1,414.1	3,687.0	0.00	0.00	Permit TD @ 13,000' MD

# Cathedral Energy Services

## Planning Report

<b>Database:</b>	USA EDM 5000 Multi Users DB	<b>Local Co-ordinate Reference:</b>	Well UWF04A-10 H04 596
<b>Company:</b>	EnCana Oil & Gas (USA) Inc	<b>TVD Reference:</b>	KBE @ 8293.0ft (Original Well Elev)
<b>Project:</b>	North Piceance	<b>MD Reference:</b>	KBE @ 8293.0ft (Original Well Elev)
<b>Site:</b>	H04 Pad	<b>North Reference:</b>	True
<b>Well:</b>	UWF04A-10 H04 596	<b>Survey Calculation Method:</b>	Minimum Curvature
<b>Wellbore:</b>	DD		
<b>Design:</b>	Plan #1		

Targets									
Target Name									
- hit/miss target	Dip Angle	Dip Dir.	TVD	+N/-S	+E/-W	Northing	Easting	Latitude	Longitude
- Shape	(°)	(°)	(ft)	(ft)	(ft)	(ft)	(ft)		
UWF04A-10 PBHL	0.00	0.00	10,847.0	-3,400.7	1,421.5	1,667,627.61	2,250,938.38	39° 38' 10.74 N	108° 9' 36.21 W
- plan hits target center									
- Rectangle (sides W30.0 H50.0 D0.0)									
UWF04A-10 TGT	0.00	0.00	7,264.0	-3,390.7	1,438.5	1,667,637.11	2,250,955.69	39° 38' 10.84 N	108° 9' 35.99 W
- plan hits target center									
- Point									

Formations						
Measured Depth (ft)	Vertical Depth (ft)	Name	Lithology	Dip (°)	Dip Direction (°)	
1,085.4	1,059.0	A GROOVE				
1,267.4	1,220.0	B GROOVE				
1,314.2	1,260.0	B GROOVE BASE				
2,257.5	2,061.0	GARDEN GULCH				
3,522.2	3,135.0	WASATCH FM				
5,968.0	5,212.0	WASATCH G				
8,259.2	7,264.0	WILLIAMS FORK				
11,842.3	10,847.0	ROLLINS				
12,086.3	11,091.0	COZZETTE				
12,262.3	11,267.0	CORCORAN				
12,557.3	11,562.0	UPPER SEGO				

Plan Annotations				
Measured Depth (ft)	Vertical Depth (ft)	Local Coordinates		Comment
		+N/-S (ft)	+E/-W (ft)	
250.0	250.0	0.0	0.0	KOP @ 250'
1,312.5	1,258.5	-265.1	112.5	EOB @ Inc. = 31.87°
7,196.7	6,255.5	-3,125.6	1,326.0	Start 3° Drop
8,259.2	7,264.0	-3,390.7	1,438.5	EOD @ Inc. = 0°
11,842.3	10,847.0	-3,400.7	1,421.5	TD @ 11,842.3' MD
13,000.0	12,004.7	-3,405.0	1,414.1	Permit TD @ 13,000' MD