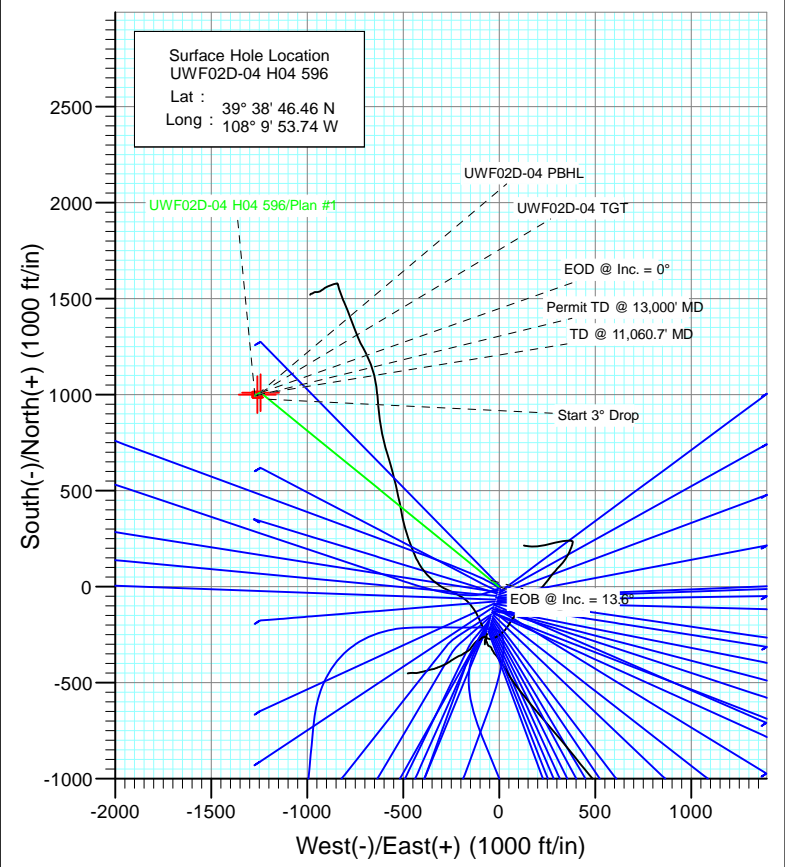


SECTION DETAILS

Sec	MD	Inc	Azi	TVD	+N/-S	+E/-W	Dleg	TFace	V Sect	Target
1	0.0	0.00	0.00	0.0	0.0	0.0	0.00	0.00	0.0	
2	200.0	0.00	0.00	200.0	0.0	0.0	0.00	0.00	0.0	
3	653.3	13.60	309.13	649.0	33.8	-41.5	3.00	309.13	53.5	
4	7009.4	13.60	309.13	6827.0	976.9	-1200.7	0.00	0.00	1547.7	
5	7462.7	0.00	0.00	7276.0	1010.7	-1242.3	3.00	180.00	1601.2	UWF02D-04 TGT
6	9272.9	0.42	239.70	9086.2	1007.4	-1248.0	0.02	239.70	1603.6	
7	11060.7	0.42	239.70	10874.0	1000.7	-1259.3	0.00	0.00	1608.5	UWF02D-04 PBHL
8	13000.0	0.42	239.70	12813.2	993.6	-1271.6	0.00	0.00	1613.7	



Azimuths to True North
 Magnetic North: 10.34°

Magnetic Field
 Strength: 52206.2snT
 Dip Angle: 65.81°
 Date: 4/18/2012
 Model: IGRF2010

FORMATION TOP DETAILS

TVDPATH	MDPATH	Formation
1096.0	1113.1	A GROOVE
1255.0	1276.7	B GROOVE
1295.0	1317.9	B GROOVE BASE
2123.0	2169.8	GARDEN GULCH
3160.0	3236.7	WASATCH FM
5259.0	5396.2	WASATCH G
7276.0	7462.7	WILLIAMS FORK
10874.0	11060.7	ROLLINS
11100.0	11286.7	COZZETTE
11274.0	11460.7	CORCORAN
11570.0	11756.7	UPPER SEGO

Plan #1
 UWF02D-04 H04 596
 125XXX: SC
 KBE @ 8293.0ft (Original Well Elev)
 North American Datum 1983
 Well UWF02D-04 H04 596, True North

Type	Target	Azimuth	Origin	Type	N/S	E/W	From TVD
TD	No Target (Freehand)	308.00	Slot		0.0	0.0	0.0

Name	TVD	+N/-S	+E/-W	Latitude	Longitude
UWF02D-04 TGT	7276.0	1010.7	-1242.3	39° 38' 56.45 N	108° 10' 9.62 W
UWF02D-04 PBHL	10874.0	1000.7	-1259.3	39° 38' 56.35 N	108° 10' 9.84 W

Cathedral Energy Services

Planning Report

Database: USA EDM 5000 Multi Users DB	Local Co-ordinate Reference: Well UWF02D-04 H04 596
Company: EnCana Oil & Gas (USA) Inc	TVD Reference: KBE @ 8293.0ft (Original Well Elev)
Project: North Piceance	MD Reference: KBE @ 8293.0ft (Original Well Elev)
Site: H04 Pad	North Reference: True
Well: UWF02D-04 H04 596	Survey Calculation Method: Minimum Curvature
Wellbore: DD	
Design: Plan #1	

Project North Piceance		
Map System: US State Plane 1983	System Datum: Mean Sea Level	
Geo Datum: North American Datum 1983		
Map Zone: Colorado Central Zone		

Site H04 Pad					
Site Position:		Northing:	1,671,070.85 ft	Latitude:	39° 38' 44.37 N
From:	Lat/Long	Easting:	2,249,607.93 ft	Longitude:	108° 9' 54.50 W
Position Uncertainty:	0.0 ft	Slot Radius:	13.200 in	Grid Convergence:	-1.68 °

Well UWF02D-04 H04 596					
Well Position	+N/-S	0.0 ft	Northing:	1,671,280.47 ft	Latitude: 39° 38' 46.46 N
	+E/-W	0.0 ft	Easting:	2,249,673.55 ft	Longitude: 108° 9' 53.74 W
Position Uncertainty		0.0 ft	Wellhead Elevation:	ft	Ground Level: 8,260.0 ft

Wellbore DD					
Magnetics	Model Name	Sample Date	Declination	Dip Angle	Field Strength
	IGRF2010	4/18/2012	(°)	(°)	(nT)
			10.34	65.81	52,206

Design Plan #1				
Audit Notes:				
Version:	Phase:	PLAN	Tie On Depth:	0.0
Vertical Section:	Depth From (TVD)	+N/-S	+E/-W	Direction
	(ft)	(ft)	(ft)	(°)
	0.0	0.0	0.0	308.00

Plan Sections										
Measured Depth (ft)	Inclination (°)	Azimuth (°)	Vertical Depth (ft)	+N/-S (ft)	+E/-W (ft)	Dogleg Rate (°/100ft)	Build Rate (°/100ft)	Turn Rate (°/100ft)	TFO (°)	Target
0.0	0.00	0.00	0.0	0.0	0.0	0.00	0.00	0.00	0.00	
200.0	0.00	0.00	200.0	0.0	0.0	0.00	0.00	0.00	0.00	
653.3	13.60	309.13	649.0	33.8	-41.5	3.00	3.00	0.00	309.13	
7,009.4	13.60	309.13	6,827.0	976.9	-1,200.7	0.00	0.00	0.00	0.00	
7,462.7	0.00	0.00	7,276.0	1,010.7	-1,242.3	3.00	-3.00	0.00	180.00	UWF02D-04 TGT
9,272.9	0.42	239.70	9,086.2	1,007.4	-1,248.0	0.02	0.02	-6.65	239.70	
11,060.7	0.42	239.70	10,874.0	1,000.7	-1,259.3	0.00	0.00	0.00	0.00	UWF02D-04 PBHL
13,000.0	0.42	239.70	12,813.2	993.6	-1,271.6	0.00	0.00	0.00	0.00	

Cathedral Energy Services

Planning Report

Database:	USA EDM 5000 Multi Users DB	Local Co-ordinate Reference:	Well UWF02D-04 H04 596
Company:	EnCana Oil & Gas (USA) Inc	TVD Reference:	KBE @ 8293.0ft (Original Well Elev)
Project:	North Piceance	MD Reference:	KBE @ 8293.0ft (Original Well Elev)
Site:	H04 Pad	North Reference:	True
Well:	UWF02D-04 H04 596	Survey Calculation Method:	Minimum Curvature
Wellbore:	DD		
Design:	Plan #1		

Planned Survey									
Measured Depth (ft)	Inclination (°)	Azimuth (°)	Vertical Depth (ft)	+N/-S (ft)	+E/-W (ft)	Vertical Section (ft)	Dogleg Rate (°/100ft)	Build Rate (°/100ft)	Comments / Formations
0.0	0.00	0.00	0.0	0.0	0.0	0.0	0.00	0.00	
100.0	0.00	0.00	100.0	0.0	0.0	0.0	0.00	0.00	
200.0	0.00	0.00	200.0	0.0	0.0	0.0	0.00	0.00	KOP @ 200'
300.0	3.00	309.13	300.0	1.7	-2.0	2.6	3.00	3.00	
400.0	6.00	309.13	399.6	6.6	-8.1	10.5	3.00	3.00	
500.0	9.00	309.13	498.8	14.8	-18.2	23.5	3.00	3.00	
600.0	12.00	309.13	597.1	26.3	-32.4	41.7	3.00	3.00	
653.3	13.60	309.13	649.0	33.8	-41.5	53.5	3.00	3.00	EOB @ Inc. = 13.6°
700.0	13.60	309.13	694.4	40.7	-50.1	64.5	0.00	0.00	
800.0	13.60	309.13	791.6	55.6	-68.3	88.0	0.00	0.00	
900.0	13.60	309.13	888.8	70.4	-86.5	111.5	0.00	0.00	
1,000.0	13.60	309.13	986.0	85.2	-104.8	135.0	0.00	0.00	
1,100.0	13.60	309.13	1,083.2	100.1	-123.0	158.5	0.00	0.00	
1,113.1	13.60	309.13	1,096.0	102.0	-125.4	161.6	0.00	0.00	A GROOVE
1,200.0	13.60	309.13	1,180.4	114.9	-141.2	182.0	0.00	0.00	
1,276.7	13.60	309.13	1,255.0	126.3	-155.2	200.1	0.00	0.00	B GROOVE
1,300.0	13.60	309.13	1,277.6	129.7	-159.5	205.6	0.00	0.00	
1,317.9	13.60	309.13	1,295.0	132.4	-162.7	209.8	0.00	0.00	B GROOVE BASE
1,400.0	13.60	309.13	1,374.8	144.6	-177.7	229.1	0.00	0.00	
1,500.0	13.60	309.13	1,472.0	159.4	-196.0	252.6	0.00	0.00	
1,600.0	13.60	309.13	1,569.2	174.3	-214.2	276.1	0.00	0.00	
1,700.0	13.60	309.13	1,666.4	189.1	-232.4	299.6	0.00	0.00	
1,800.0	13.60	309.13	1,763.6	203.9	-250.7	323.1	0.00	0.00	
1,900.0	13.60	309.13	1,860.8	218.8	-268.9	346.6	0.00	0.00	
2,000.0	13.60	309.13	1,958.0	233.6	-287.1	370.1	0.00	0.00	
2,100.0	13.60	309.13	2,055.2	248.5	-305.4	393.6	0.00	0.00	
2,169.8	13.60	309.13	2,123.0	258.8	-318.1	410.0	0.00	0.00	GARDEN GULCH
2,200.0	13.60	309.13	2,152.4	263.3	-323.6	417.1	0.00	0.00	
2,300.0	13.60	309.13	2,249.6	278.1	-341.9	440.6	0.00	0.00	
2,400.0	13.60	309.13	2,346.8	293.0	-360.1	464.1	0.00	0.00	
2,500.0	13.60	309.13	2,444.0	307.8	-378.3	487.6	0.00	0.00	
2,600.0	13.60	309.13	2,541.2	322.6	-396.6	511.1	0.00	0.00	
2,700.0	13.60	309.13	2,638.4	337.5	-414.8	534.6	0.00	0.00	
2,800.0	13.60	309.13	2,735.6	352.3	-433.0	558.2	0.00	0.00	
2,900.0	13.60	309.13	2,832.8	367.2	-451.3	581.7	0.00	0.00	
3,000.0	13.60	309.13	2,930.0	382.0	-469.5	605.2	0.00	0.00	
3,100.0	13.60	309.13	3,027.2	396.8	-487.8	628.7	0.00	0.00	
3,200.0	13.60	309.13	3,124.4	411.7	-506.0	652.2	0.00	0.00	
3,236.7	13.60	309.13	3,160.0	417.1	-512.7	660.8	0.00	0.00	WASATCH FM
3,300.0	13.60	309.13	3,221.6	426.5	-524.2	675.7	0.00	0.00	
3,400.0	13.60	309.13	3,318.8	441.4	-542.5	699.2	0.00	0.00	
3,500.0	13.60	309.13	3,416.0	456.2	-560.7	722.7	0.00	0.00	
3,600.0	13.60	309.13	3,513.2	471.0	-578.9	746.2	0.00	0.00	
3,700.0	13.60	309.13	3,610.3	485.9	-597.2	769.7	0.00	0.00	
3,800.0	13.60	309.13	3,707.5	500.7	-615.4	793.2	0.00	0.00	
3,900.0	13.60	309.13	3,804.7	515.5	-633.7	816.7	0.00	0.00	
4,000.0	13.60	309.13	3,901.9	530.4	-651.9	840.2	0.00	0.00	
4,100.0	13.60	309.13	3,999.1	545.2	-670.1	863.7	0.00	0.00	
4,200.0	13.60	309.13	4,096.3	560.1	-688.4	887.3	0.00	0.00	
4,300.0	13.60	309.13	4,193.5	574.9	-706.6	910.8	0.00	0.00	
4,400.0	13.60	309.13	4,290.7	589.7	-724.9	934.3	0.00	0.00	
4,500.0	13.60	309.13	4,387.9	604.6	-743.1	957.8	0.00	0.00	

Cathedral Energy Services

Planning Report

Database:	USA EDM 5000 Multi Users DB	Local Co-ordinate Reference:	Well UWF02D-04 H04 596
Company:	EnCana Oil & Gas (USA) Inc	TVD Reference:	KBE @ 8293.0ft (Original Well Elev)
Project:	North Piceance	MD Reference:	KBE @ 8293.0ft (Original Well Elev)
Site:	H04 Pad	North Reference:	True
Well:	UWF02D-04 H04 596	Survey Calculation Method:	Minimum Curvature
Wellbore:	DD		
Design:	Plan #1		

Planned Survey									
Measured Depth (ft)	Inclination (°)	Azimuth (°)	Vertical Depth (ft)	+N/-S (ft)	+E/-W (ft)	Vertical Section (ft)	Dogleg Rate (°/100ft)	Build Rate (°/100ft)	Comments / Formations
4,600.0	13.60	309.13	4,485.1	619.4	-761.3	981.3	0.00	0.00	
4,700.0	13.60	309.13	4,582.3	634.2	-779.6	1,004.8	0.00	0.00	
4,800.0	13.60	309.13	4,679.5	649.1	-797.8	1,028.3	0.00	0.00	
4,900.0	13.60	309.13	4,776.7	663.9	-816.0	1,051.8	0.00	0.00	
5,000.0	13.60	309.13	4,873.9	678.8	-834.3	1,075.3	0.00	0.00	
5,100.0	13.60	309.13	4,971.1	693.6	-852.5	1,098.8	0.00	0.00	
5,200.0	13.60	309.13	5,068.3	708.4	-870.8	1,122.3	0.00	0.00	
5,300.0	13.60	309.13	5,165.5	723.3	-889.0	1,145.8	0.00	0.00	
5,396.2	13.60	309.13	5,259.0	737.5	-906.5	1,168.4	0.00	0.00	WASATCH G
5,400.0	13.60	309.13	5,262.7	738.1	-907.2	1,169.3	0.00	0.00	
5,500.0	13.60	309.13	5,359.9	753.0	-925.5	1,192.8	0.00	0.00	
5,600.0	13.60	309.13	5,457.1	767.8	-943.7	1,216.3	0.00	0.00	
5,700.0	13.60	309.13	5,554.3	782.6	-961.9	1,239.9	0.00	0.00	
5,800.0	13.60	309.13	5,651.5	797.5	-980.2	1,263.4	0.00	0.00	
5,900.0	13.60	309.13	5,748.7	812.3	-998.4	1,286.9	0.00	0.00	
6,000.0	13.60	309.13	5,845.9	827.1	-1,016.7	1,310.4	0.00	0.00	
6,100.0	13.60	309.13	5,943.1	842.0	-1,034.9	1,333.9	0.00	0.00	
6,200.0	13.60	309.13	6,040.3	856.8	-1,053.1	1,357.4	0.00	0.00	
6,300.0	13.60	309.13	6,137.5	871.7	-1,071.4	1,380.9	0.00	0.00	
6,400.0	13.60	309.13	6,234.7	886.5	-1,089.6	1,404.4	0.00	0.00	
6,500.0	13.60	309.13	6,331.9	901.3	-1,107.8	1,427.9	0.00	0.00	
6,600.0	13.60	309.13	6,429.1	916.2	-1,126.1	1,451.4	0.00	0.00	
6,700.0	13.60	309.13	6,526.3	931.0	-1,144.3	1,474.9	0.00	0.00	
6,800.0	13.60	309.13	6,623.4	945.8	-1,162.6	1,498.4	0.00	0.00	
6,900.0	13.60	309.13	6,720.6	960.7	-1,180.8	1,521.9	0.00	0.00	
7,009.4	13.60	309.13	6,827.0	976.9	-1,200.7	1,547.7	0.00	0.00	Start 3° Drop
7,100.0	10.88	309.13	6,915.5	989.0	-1,215.6	1,566.9	3.00	-3.00	
7,200.0	7.88	309.13	7,014.2	999.3	-1,228.3	1,583.1	3.00	-3.00	
7,300.0	4.88	309.13	7,113.5	1,006.3	-1,236.9	1,594.3	3.00	-3.00	
7,400.0	1.88	309.13	7,213.3	1,010.1	-1,241.5	1,600.2	3.00	-3.00	
7,462.7	0.00	0.00	7,276.0	1,010.7	-1,242.3	1,601.2	3.00	-3.00	EOD @ Inc. = 0° - WILLIAMS FORK
7,500.0	0.01	239.70	7,313.3	1,010.7	-1,242.3	1,601.2	0.02	0.02	
7,600.0	0.03	239.70	7,413.3	1,010.7	-1,242.3	1,601.2	0.02	0.02	
7,700.0	0.06	239.70	7,513.3	1,010.6	-1,242.4	1,601.2	0.02	0.02	
7,800.0	0.08	239.70	7,613.3	1,010.6	-1,242.5	1,601.3	0.02	0.02	
7,900.0	0.10	239.70	7,713.3	1,010.5	-1,242.6	1,601.3	0.02	0.02	
8,000.0	0.12	239.70	7,813.3	1,010.4	-1,242.8	1,601.4	0.02	0.02	
8,100.0	0.15	239.70	7,913.3	1,010.3	-1,243.0	1,601.5	0.02	0.02	
8,200.0	0.17	239.70	8,013.3	1,010.1	-1,243.2	1,601.6	0.02	0.02	
8,300.0	0.19	239.70	8,113.3	1,010.0	-1,243.5	1,601.7	0.02	0.02	
8,400.0	0.22	239.70	8,213.3	1,009.8	-1,243.8	1,601.8	0.02	0.02	
8,500.0	0.24	239.70	8,313.3	1,009.6	-1,244.2	1,602.0	0.02	0.02	
8,600.0	0.26	239.70	8,413.3	1,009.4	-1,244.5	1,602.1	0.02	0.02	
8,700.0	0.29	239.70	8,513.3	1,009.1	-1,245.0	1,602.3	0.02	0.02	
8,800.0	0.31	239.70	8,613.3	1,008.9	-1,245.4	1,602.5	0.02	0.02	
8,900.0	0.33	239.70	8,713.3	1,008.6	-1,245.9	1,602.7	0.02	0.02	
9,000.0	0.36	239.70	8,813.3	1,008.3	-1,246.4	1,602.9	0.02	0.02	
9,100.0	0.38	239.70	8,913.3	1,008.0	-1,247.0	1,603.2	0.02	0.02	
9,200.0	0.40	239.70	9,013.3	1,007.6	-1,247.6	1,603.4	0.02	0.02	
9,272.9	0.42	239.70	9,086.2	1,007.4	-1,248.0	1,603.6	0.02	0.02	
9,300.0	0.42	239.70	9,113.3	1,007.3	-1,248.2	1,603.7	0.00	0.00	
9,400.0	0.42	239.70	9,213.3	1,006.9	-1,248.8	1,604.0	0.00	0.00	

Cathedral Energy Services

Planning Report

Database:	USA EDM 5000 Multi Users DB	Local Co-ordinate Reference:	Well UWF02D-04 H04 596
Company:	EnCana Oil & Gas (USA) Inc	TVD Reference:	KBE @ 8293.0ft (Original Well Elev)
Project:	North Piceance	MD Reference:	KBE @ 8293.0ft (Original Well Elev)
Site:	H04 Pad	North Reference:	True
Well:	UWF02D-04 H04 596	Survey Calculation Method:	Minimum Curvature
Wellbore:	DD		
Design:	Plan #1		

Planned Survey									
Measured Depth (ft)	Inclination (°)	Azimuth (°)	Vertical Depth (ft)	+N/-S (ft)	+E/-W (ft)	Vertical Section (ft)	Dogleg Rate (°/100ft)	Build Rate (°/100ft)	Comments / Formations
9,500.0	0.42	239.70	9,313.3	1,006.5	-1,249.4	1,604.2	0.00	0.00	
9,600.0	0.42	239.70	9,413.3	1,006.1	-1,250.1	1,604.5	0.00	0.00	
9,700.0	0.42	239.70	9,513.3	1,005.8	-1,250.7	1,604.8	0.00	0.00	
9,800.0	0.42	239.70	9,613.3	1,005.4	-1,251.3	1,605.1	0.00	0.00	
9,900.0	0.42	239.70	9,713.3	1,005.0	-1,252.0	1,605.3	0.00	0.00	
10,000.0	0.42	239.70	9,813.3	1,004.7	-1,252.6	1,605.6	0.00	0.00	
10,100.0	0.42	239.70	9,913.3	1,004.3	-1,253.2	1,605.9	0.00	0.00	
10,200.0	0.42	239.70	10,013.3	1,003.9	-1,253.9	1,606.1	0.00	0.00	
10,300.0	0.42	239.70	10,113.3	1,003.6	-1,254.5	1,606.4	0.00	0.00	
10,400.0	0.42	239.70	10,213.3	1,003.2	-1,255.1	1,606.7	0.00	0.00	
10,500.0	0.42	239.70	10,313.3	1,002.8	-1,255.8	1,607.0	0.00	0.00	
10,600.0	0.42	239.70	10,413.3	1,002.4	-1,256.4	1,607.2	0.00	0.00	
10,700.0	0.42	239.70	10,513.3	1,002.1	-1,257.0	1,607.5	0.00	0.00	
10,800.0	0.42	239.70	10,613.3	1,001.7	-1,257.7	1,607.8	0.00	0.00	
10,900.0	0.42	239.70	10,713.3	1,001.3	-1,258.3	1,608.0	0.00	0.00	
11,000.0	0.42	239.70	10,813.3	1,001.0	-1,258.9	1,608.3	0.00	0.00	
11,060.7	0.42	239.70	10,874.0	1,000.7	-1,259.3	1,608.5	0.00	0.00	TD @ 11,060.7' MD - ROLLINS
11,100.0	0.42	239.70	10,913.3	1,000.6	-1,259.6	1,608.6	0.00	0.00	
11,200.0	0.42	239.70	11,013.3	1,000.2	-1,260.2	1,608.9	0.00	0.00	
11,286.7	0.42	239.70	11,100.0	999.9	-1,260.8	1,609.1	0.00	0.00	COZZETTE
11,300.0	0.42	239.70	11,113.3	999.9	-1,260.8	1,609.1	0.00	0.00	
11,400.0	0.42	239.70	11,213.3	999.5	-1,261.5	1,609.4	0.00	0.00	
11,460.7	0.42	239.70	11,274.0	999.3	-1,261.9	1,609.6	0.00	0.00	CORCORAN
11,500.0	0.42	239.70	11,313.3	999.1	-1,262.1	1,609.7	0.00	0.00	
11,600.0	0.42	239.70	11,413.3	998.7	-1,262.7	1,609.9	0.00	0.00	
11,700.0	0.42	239.70	11,513.3	998.4	-1,263.4	1,610.2	0.00	0.00	
11,756.7	0.42	239.70	11,570.0	998.2	-1,263.7	1,610.4	0.00	0.00	UPPER SEGO
11,800.0	0.42	239.70	11,613.3	998.0	-1,264.0	1,610.5	0.00	0.00	
11,900.0	0.42	239.70	11,713.2	997.6	-1,264.6	1,610.8	0.00	0.00	
12,000.0	0.42	239.70	11,813.2	997.3	-1,265.3	1,611.0	0.00	0.00	
12,100.0	0.42	239.70	11,913.2	996.9	-1,265.9	1,611.3	0.00	0.00	
12,200.0	0.42	239.70	12,013.2	996.5	-1,266.5	1,611.6	0.00	0.00	
12,300.0	0.42	239.70	12,113.2	996.2	-1,267.2	1,611.8	0.00	0.00	
12,400.0	0.42	239.70	12,213.2	995.8	-1,267.8	1,612.1	0.00	0.00	
12,500.0	0.42	239.70	12,313.2	995.4	-1,268.4	1,612.4	0.00	0.00	
12,600.0	0.42	239.70	12,413.2	995.0	-1,269.1	1,612.6	0.00	0.00	
12,700.0	0.42	239.70	12,513.2	994.7	-1,269.7	1,612.9	0.00	0.00	
12,800.0	0.42	239.70	12,613.2	994.3	-1,270.3	1,613.2	0.00	0.00	
12,900.0	0.42	239.70	12,713.2	993.9	-1,271.0	1,613.5	0.00	0.00	
13,000.0	0.42	239.70	12,813.2	993.6	-1,271.6	1,613.7	0.00	0.00	Permit TD @ 13,000' MD

Cathedral Energy Services

Planning Report

Database: USA EDM 5000 Multi Users DB	Local Co-ordinate Reference: Well UWF02D-04 H04 596
Company: EnCana Oil & Gas (USA) Inc	TVD Reference: KBE @ 8293.0ft (Original Well Elev)
Project: North Piceance	MD Reference: KBE @ 8293.0ft (Original Well Elev)
Site: H04 Pad	North Reference: True
Well: UWF02D-04 H04 596	Survey Calculation Method: Minimum Curvature
Wellbore: DD	
Design: Plan #1	

Targets									
Target Name	Dip Angle	Dip Dir.	TVD	+N/-S	+E/-W	Northing	Easting	Latitude	Longitude
- hit/miss target	(°)	(°)	(ft)	(ft)	(ft)	(ft)	(ft)		
- Shape									
UWF02D-04 PBHL	0.00	0.00	10,874.0	1,000.7	-1,259.3	1,672,317.72	2,248,444.13	39° 38' 56.35 N	108° 10' 9.84 W
- plan hits target center									
- Rectangle (sides W30.0 H50.0 D0.0)									
UWF02D-04 TGT	0.00	0.00	7,276.0	1,010.7	-1,242.3	1,672,327.18	2,248,461.46	39° 38' 56.45 N	108° 10' 9.62 W
- plan hits target center									
- Point									

Formations						
Measured Depth	Vertical Depth	Name	Lithology	Dip	Dip Direction	
(ft)	(ft)			(°)	(°)	
1,113.1	1,096.0	A GROOVE				
1,276.7	1,255.0	B GROOVE				
1,317.9	1,295.0	B GROOVE BASE				
2,169.8	2,123.0	GARDEN GULCH				
3,236.7	3,160.0	WASATCH FM				
5,396.2	5,259.0	WASATCH G				
7,462.7	7,276.0	WILLIAMS FORK				
11,060.7	10,874.0	ROLLINS				
11,286.7	11,100.0	COZZETTE				
11,460.7	11,274.0	CORCORAN				
11,756.7	11,570.0	UPPER SEGO				

Plan Annotations					
Measured Depth	Vertical Depth	Local Coordinates		Comment	
(ft)	(ft)	+N/-S	+E/-W		
		(ft)	(ft)		
200.0	200.0	0.0	0.0	KOP @ 200'	
653.3	649.0	33.8	-41.5	EOB @ Inc. = 13.6°	
7,009.4	6,827.0	976.9	-1,200.7	Start 3° Drop	
7,462.7	7,276.0	1,010.7	-1,242.3	EOD @ Inc. = 0°	
11,060.7	10,874.0	1,000.7	-1,259.3	TD @ 11,060.7' MD	
13,000.0	12,813.2	993.6	-1,271.6	Permit TD @ 13,000' MD	