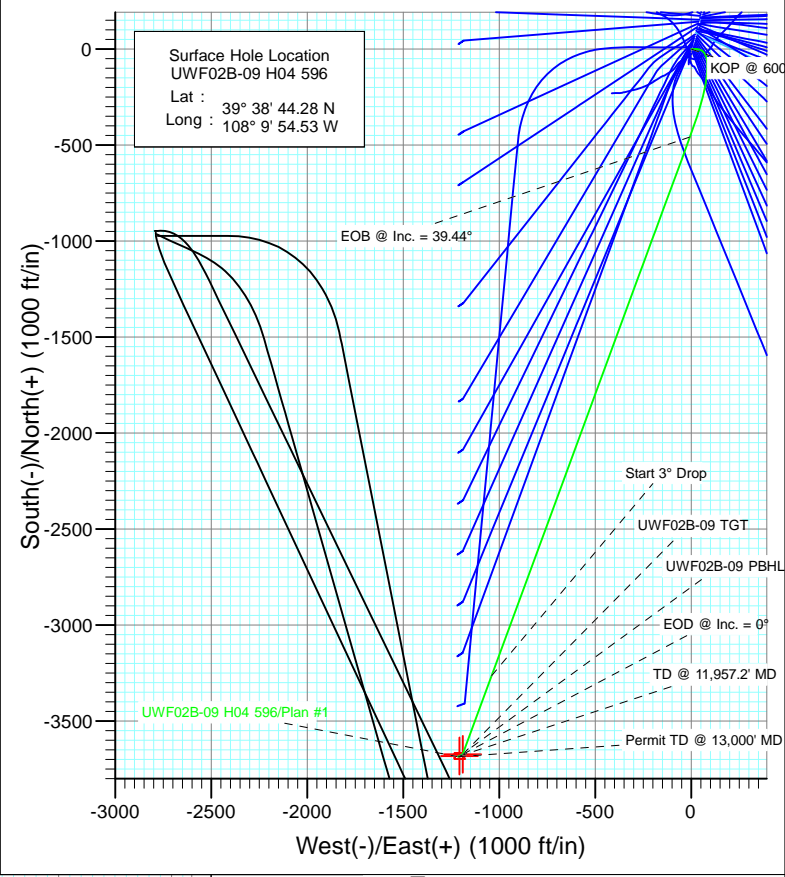


**SECTION DETAILS**

Sec	MD	Inc	Azi	TVD	+N/-S	+E/-W	Dleg	TFace	VSect	Target
1	0.0	0.00	0.00	0.0	0.0	0.0	0.00	0.00	0.0	
2	600.0	0.00	0.00	600.0	0.0	0.0	0.00	0.00	0.0	
3	933.3	10.00	90.00	931.6	0.0	29.0	3.00	90.00	-9.1	
4	2391.4	39.44	200.21	2278.7	-457.1	-6.1	3.00	120.43	436.0	
5	7099.5	39.44	200.21	5914.7	-3263.9	-1039.2	0.00	0.00	3425.2	
6	8414.2	0.00	0.00	7128.0	-3672.0	-1189.4	3.00	180.00	3859.8	UWF02B-09 TGT
7	10215.3	0.43	239.50	8929.1	-3675.4	-1195.2	0.02	239.50	3864.8	
8	11957.2	0.43	239.50	10671.0	-3682.0	-1206.4	0.00	0.00	3874.6	UWF02B-09 PBHL
9	13000.0	0.43	239.50	11713.7	-3685.9	-1213.1	0.00	0.00	3880.4	



**T M**

Azimuths to True North  
 Magnetic North: 10.34°

Magnetic Field  
 Strength: 52205.8snT  
 Dip Angle: 65.81°  
 Date: 4/18/2012  
 Model: IGRF2010

**FORMATION TOP DETAILS**

TVDPath	MDPath	Formation
1037.0	1040.1	A GROOVE
1202.0	1207.0	B GROOVE
1242.0	1247.6	B GROOVE BASE
2018.0	2073.5	GARDEN GULCH
3067.0	3412.1	WASATCH FM
5129.0	6082.1	WASATCH G
7128.0	8414.2	WILLIAMS FORK
10671.0	11957.2	ROLLINS
10962.0	12248.2	COZZETTE
11134.0	12420.3	CORCORAN
11421.0	12707.3	UPPER SEGO

Plan #1  
 UWF02B-09 H04 596  
 125XXX: SC  
 KBE @ 8293.0ft (Original Well Elev)  
 North American Datum 1983  
 Well UWF02B-09 H04 596, True North

Type	Target	Azimuth	Origin	Type	N/S	E/W	From
TD	No Target (Freehand)	198.22	Slot		0.0	0.0	TVD
Name	TVD	+N/-S	+E/-W	Latitude	Longitude		
UWF02B-09 TGT	7128.0	-3672.0	-1189.4	39° 38' 7.99 N	108° 10' 9.73 W		
UWF02B-09 PBHL	10671.0	-3682.0	-1206.4	39° 38' 7.89 N	108° 10' 9.95 W		

# Cathedral Energy Services

## Planning Report

<b>Database:</b> USA EDM 5000 Multi Users DB	<b>Local Co-ordinate Reference:</b> Well UWF02B-09 H04 596
<b>Company:</b> EnCana Oil & Gas (USA) Inc	<b>TVD Reference:</b> KBE @ 8293.0ft (Original Well Elev)
<b>Project:</b> North Piceance	<b>MD Reference:</b> KBE @ 8293.0ft (Original Well Elev)
<b>Site:</b> H04 Pad	<b>North Reference:</b> True
<b>Well:</b> UWF02B-09 H04 596	<b>Survey Calculation Method:</b> Minimum Curvature
<b>Wellbore:</b> DD	
<b>Design:</b> Plan #1	

<b>Project</b> North Piceance		
<b>Map System:</b> US State Plane 1983	<b>System Datum:</b> Mean Sea Level	
<b>Geo Datum:</b> North American Datum 1983		
<b>Map Zone:</b> Colorado Central Zone		

<b>Site</b> H04 Pad					
<b>Site Position:</b>		<b>Northing:</b>	1,671,070.85 ft	<b>Latitude:</b>	39° 38' 44.37 N
<b>From:</b>	Lat/Long	<b>Easting:</b>	2,249,607.93 ft	<b>Longitude:</b>	108° 9' 54.50 W
<b>Position Uncertainty:</b>	0.0 ft	<b>Slot Radius:</b>	13.200 in	<b>Grid Convergence:</b>	-1.68 °

<b>Well</b> UWF02B-09 H04 596						
<b>Well Position</b>	<b>+N/-S</b>	0.0 ft	<b>Northing:</b>	1,671,061.81 ft	<b>Latitude:</b>	39° 38' 44.28 N
	<b>+E/-W</b>	0.0 ft	<b>Easting:</b>	2,249,605.32 ft	<b>Longitude:</b>	108° 9' 54.53 W
<b>Position Uncertainty</b>		0.0 ft	<b>Wellhead Elevation:</b>	ft	<b>Ground Level:</b>	8,260.0 ft

<b>Wellbore</b> DD					
<b>Magnetics</b>	<b>Model Name</b>	<b>Sample Date</b>	<b>Declination</b>	<b>Dip Angle</b>	<b>Field Strength</b>
	IGRF2010	4/18/2012	(°)	(°)	(nT)
			10.34	65.81	52,206

<b>Design</b> Plan #1					
<b>Audit Notes:</b>					
<b>Version:</b>	<b>Phase:</b>	PLAN	<b>Tie On Depth:</b>	0.0	
<b>Vertical Section:</b>	<b>Depth From (TVD)</b>	<b>+N/-S</b>	<b>+E/-W</b>	<b>Direction</b>	
	(ft)	(ft)	(ft)	(°)	
	0.0	0.0	0.0	198.22	

<b>Plan Sections</b>										
Measured Depth (ft)	Inclination (°)	Azimuth (°)	Vertical Depth (ft)	+N/-S (ft)	+E/-W (ft)	Dogleg Rate (°/100ft)	Build Rate (°/100ft)	Turn Rate (°/100ft)	TFO (°)	Target
0.0	0.00	0.00	0.0	0.0	0.0	0.00	0.00	0.00	0.00	
600.0	0.00	0.00	600.0	0.0	0.0	0.00	0.00	0.00	0.00	
933.3	10.00	90.00	931.6	0.0	29.0	3.00	3.00	0.00	90.00	
2,391.4	39.44	200.21	2,278.7	-457.1	-6.1	3.00	2.02	7.56	120.43	
7,099.5	39.44	200.21	5,914.7	-3,263.9	-1,039.2	0.00	0.00	0.00	0.00	
8,414.2	0.00	0.00	7,128.0	-3,672.0	-1,189.4	3.00	-3.00	0.00	180.00	UWF02B-09 TGT
10,215.3	0.43	239.50	8,929.1	-3,675.4	-1,195.2	0.02	0.02	-6.69	239.50	
11,957.2	0.43	239.50	10,671.0	-3,682.0	-1,206.4	0.00	0.00	0.00	0.00	UWF02B-09 PBHL
13,000.0	0.43	239.50	11,713.7	-3,685.9	-1,213.1	0.00	0.00	0.00	0.00	

# Cathedral Energy Services

## Planning Report

<b>Database:</b>	USA EDM 5000 Multi Users DB	<b>Local Co-ordinate Reference:</b>	Well UWF02B-09 H04 596
<b>Company:</b>	EnCana Oil & Gas (USA) Inc	<b>TVD Reference:</b>	KBE @ 8293.0ft (Original Well Elev)
<b>Project:</b>	North Piceance	<b>MD Reference:</b>	KBE @ 8293.0ft (Original Well Elev)
<b>Site:</b>	H04 Pad	<b>North Reference:</b>	True
<b>Well:</b>	UWF02B-09 H04 596	<b>Survey Calculation Method:</b>	Minimum Curvature
<b>Wellbore:</b>	DD		
<b>Design:</b>	Plan #1		

### Planned Survey

Measured Depth (ft)	Inclination (°)	Azimuth (°)	Vertical Depth (ft)	+N/-S (ft)	+E/-W (ft)	Vertical Section (ft)	Dogleg Rate (°/100ft)	Build Rate (°/100ft)	Comments / Formations
0.0	0.00	0.00	0.0	0.0	0.0	0.0	0.00	0.00	
100.0	0.00	0.00	100.0	0.0	0.0	0.0	0.00	0.00	
200.0	0.00	0.00	200.0	0.0	0.0	0.0	0.00	0.00	
300.0	0.00	0.00	300.0	0.0	0.0	0.0	0.00	0.00	
400.0	0.00	0.00	400.0	0.0	0.0	0.0	0.00	0.00	
500.0	0.00	0.00	500.0	0.0	0.0	0.0	0.00	0.00	
600.0	0.00	0.00	600.0	0.0	0.0	0.0	0.00	0.00	KOP @ 600'
700.0	3.00	90.00	700.0	0.0	2.6	-0.8	3.00	3.00	
800.0	6.00	90.00	799.6	0.0	10.5	-3.3	3.00	3.00	
900.0	9.00	90.00	898.8	0.0	23.5	-7.4	3.00	3.00	
933.3	10.00	90.00	931.6	0.0	29.0	-9.1	3.00	3.00	
1,000.0	9.15	100.91	997.4	-1.0	40.0	-11.6	3.00	-1.28	
1,040.1	8.82	108.32	1,037.0	-2.6	46.1	-12.0	3.00	-0.83	A GROOVE
1,100.0	8.61	120.12	1,096.2	-6.3	54.3	-11.0	3.00	-0.34	
1,200.0	9.08	139.49	1,195.0	-16.0	65.9	-5.4	3.00	0.47	
1,207.0	9.15	140.75	1,202.0	-16.9	66.6	-4.8	3.00	0.98	B GROOVE
1,247.6	9.63	147.61	1,242.0	-22.2	70.5	-0.9	3.00	1.18	B GROOVE BASE
1,300.0	10.42	155.41	1,293.6	-30.3	74.8	5.4	3.00	1.52	
1,400.0	12.36	167.09	1,391.7	-48.9	80.9	21.2	3.00	1.93	
1,500.0	14.65	175.41	1,488.9	-72.0	84.4	42.0	3.00	2.29	
1,600.0	17.16	181.44	1,585.1	-99.3	85.0	67.8	3.00	2.51	
1,700.0	19.80	185.94	1,679.9	-130.9	82.9	98.4	3.00	2.64	
1,800.0	22.53	189.40	1,773.2	-166.7	78.0	133.9	3.00	2.73	
1,900.0	25.31	192.14	1,864.6	-206.5	70.4	174.1	3.00	2.79	
2,000.0	28.14	194.37	1,953.9	-250.2	60.0	218.9	3.00	2.83	
2,073.5	30.24	195.76	2,018.0	-284.8	50.7	254.7	3.00	2.85	GARDEN GULCH
2,100.0	31.00	196.22	2,040.8	-297.8	47.0	268.2	3.00	2.87	
2,200.0	33.88	197.78	2,125.2	-349.1	31.2	321.8	3.00	2.88	
2,300.0	36.78	199.13	2,206.8	-403.9	12.9	379.7	3.00	2.90	
2,391.4	39.44	200.21	2,278.7	-457.0	-6.1	436.0	3.00	2.91	EOB @ Inc. = 39.44°
2,400.0	39.44	200.21	2,285.3	-462.2	-8.0	441.5	0.01	0.01	
2,500.0	39.44	200.21	2,362.6	-521.8	-29.9	505.0	0.00	0.00	
2,600.0	39.44	200.21	2,439.8	-581.4	-51.9	568.5	0.00	0.00	
2,700.0	39.44	200.21	2,517.0	-641.0	-73.8	632.0	0.00	0.00	
2,800.0	39.44	200.21	2,594.3	-700.6	-95.7	695.4	0.00	0.00	
2,900.0	39.44	200.21	2,671.5	-760.3	-117.7	758.9	0.00	0.00	
3,000.0	39.44	200.21	2,748.7	-819.9	-139.6	822.4	0.00	0.00	
3,100.0	39.44	200.21	2,825.9	-879.5	-161.6	885.9	0.00	0.00	
3,200.0	39.44	200.21	2,903.2	-939.1	-183.5	949.4	0.00	0.00	
3,300.0	39.44	200.21	2,980.4	-998.7	-205.5	1,012.9	0.00	0.00	
3,400.0	39.44	200.21	3,057.6	-1,058.3	-227.4	1,076.4	0.00	0.00	
3,412.1	39.44	200.21	3,067.0	-1,065.6	-230.1	1,084.1	0.00	0.00	WASATCH FM
3,500.0	39.44	200.21	3,134.9	-1,118.0	-249.3	1,139.9	0.00	0.00	
3,600.0	39.44	200.21	3,212.1	-1,177.6	-271.3	1,203.4	0.00	0.00	
3,700.0	39.44	200.21	3,289.3	-1,237.2	-293.2	1,266.8	0.00	0.00	
3,800.0	39.44	200.21	3,366.5	-1,296.8	-315.2	1,330.3	0.00	0.00	
3,900.0	39.44	200.21	3,443.8	-1,356.4	-337.1	1,393.8	0.00	0.00	
4,000.0	39.44	200.21	3,521.0	-1,416.0	-359.1	1,457.3	0.00	0.00	
4,100.0	39.44	200.21	3,598.2	-1,475.7	-381.0	1,520.8	0.00	0.00	
4,200.0	39.44	200.21	3,675.5	-1,535.3	-402.9	1,584.3	0.00	0.00	
4,300.0	39.44	200.21	3,752.7	-1,594.9	-424.9	1,647.8	0.00	0.00	
4,400.0	39.44	200.21	3,829.9	-1,654.5	-446.8	1,711.3	0.00	0.00	

# Cathedral Energy Services

## Planning Report

<b>Database:</b>	USA EDM 5000 Multi Users DB	<b>Local Co-ordinate Reference:</b>	Well UWF02B-09 H04 596
<b>Company:</b>	EnCana Oil & Gas (USA) Inc	<b>TVD Reference:</b>	KBE @ 8293.0ft (Original Well Elev)
<b>Project:</b>	North Piceance	<b>MD Reference:</b>	KBE @ 8293.0ft (Original Well Elev)
<b>Site:</b>	H04 Pad	<b>North Reference:</b>	True
<b>Well:</b>	UWF02B-09 H04 596	<b>Survey Calculation Method:</b>	Minimum Curvature
<b>Wellbore:</b>	DD		
<b>Design:</b>	Plan #1		

Planned Survey									
Measured Depth (ft)	Inclination (°)	Azimuth (°)	Vertical Depth (ft)	+N/-S (ft)	+E/-W (ft)	Vertical Section (ft)	Dogleg Rate (°/100ft)	Build Rate (°/100ft)	Comments / Formations
4,500.0	39.44	200.21	3,907.2	-1,714.1	-468.8	1,774.8	0.00	0.00	
4,600.0	39.44	200.21	3,984.4	-1,773.7	-490.7	1,838.2	0.00	0.00	
4,700.0	39.44	200.21	4,061.6	-1,833.4	-512.7	1,901.7	0.00	0.00	
4,800.0	39.44	200.21	4,138.8	-1,893.0	-534.6	1,965.2	0.00	0.00	
4,900.0	39.44	200.21	4,216.1	-1,952.6	-556.5	2,028.7	0.00	0.00	
5,000.0	39.44	200.21	4,293.3	-2,012.2	-578.5	2,092.2	0.00	0.00	
5,100.0	39.44	200.21	4,370.5	-2,071.8	-600.4	2,155.7	0.00	0.00	
5,200.0	39.44	200.21	4,447.8	-2,131.4	-622.4	2,219.2	0.00	0.00	
5,300.0	39.44	200.21	4,525.0	-2,191.1	-644.3	2,282.7	0.00	0.00	
5,400.0	39.44	200.21	4,602.2	-2,250.7	-666.3	2,346.2	0.00	0.00	
5,500.0	39.44	200.21	4,679.4	-2,310.3	-688.2	2,409.6	0.00	0.00	
5,600.0	39.44	200.21	4,756.7	-2,369.9	-710.1	2,473.1	0.00	0.00	
5,700.0	39.44	200.21	4,833.9	-2,429.5	-732.1	2,536.6	0.00	0.00	
5,800.0	39.44	200.21	4,911.1	-2,489.1	-754.0	2,600.1	0.00	0.00	
5,900.0	39.44	200.21	4,988.4	-2,548.8	-776.0	2,663.6	0.00	0.00	
6,000.0	39.44	200.21	5,065.6	-2,608.4	-797.9	2,727.1	0.00	0.00	
6,082.1	39.44	200.21	5,129.0	-2,657.3	-815.9	2,779.2	0.00	0.00	WASATCH G
6,100.0	39.44	200.21	5,142.8	-2,668.0	-819.9	2,790.6	0.00	0.00	
6,200.0	39.44	200.21	5,220.0	-2,727.6	-841.8	2,854.1	0.00	0.00	
6,300.0	39.44	200.21	5,297.3	-2,787.2	-863.7	2,917.6	0.00	0.00	
6,400.0	39.44	200.21	5,374.5	-2,846.8	-885.7	2,981.0	0.00	0.00	
6,500.0	39.44	200.21	5,451.7	-2,906.5	-907.6	3,044.5	0.00	0.00	
6,600.0	39.44	200.21	5,529.0	-2,966.1	-929.6	3,108.0	0.00	0.00	
6,700.0	39.44	200.21	5,606.2	-3,025.7	-951.5	3,171.5	0.00	0.00	
6,800.0	39.44	200.21	5,683.4	-3,085.3	-973.5	3,235.0	0.00	0.00	
6,900.0	39.44	200.21	5,760.6	-3,144.9	-995.4	3,298.5	0.00	0.00	
7,000.0	39.44	200.21	5,837.9	-3,204.6	-1,017.3	3,362.0	0.00	0.00	
7,099.5	39.44	200.21	5,914.7	-3,263.9	-1,039.2	3,425.1	0.00	0.00	Start 3° Drop
7,200.0	36.43	200.21	5,994.0	-3,321.8	-1,060.5	3,486.9	3.00	-3.00	
7,300.0	33.43	200.21	6,076.0	-3,375.6	-1,080.3	3,544.1	3.00	-3.00	
7,400.0	30.43	200.21	6,160.8	-3,425.2	-1,098.6	3,596.9	3.00	-3.00	
7,500.0	27.43	200.21	6,248.3	-3,470.6	-1,115.3	3,645.3	3.00	-3.00	
7,600.0	24.43	200.21	6,338.3	-3,511.6	-1,130.4	3,689.0	3.00	-3.00	
7,700.0	21.43	200.21	6,430.4	-3,548.1	-1,143.8	3,727.9	3.00	-3.00	
7,800.0	18.43	200.21	6,524.4	-3,580.1	-1,155.6	3,761.9	3.00	-3.00	
7,900.0	15.43	200.21	6,620.0	-3,607.4	-1,165.6	3,791.0	3.00	-3.00	
8,000.0	12.43	200.21	6,717.1	-3,630.0	-1,173.9	3,815.1	3.00	-3.00	
8,100.0	9.43	200.21	6,815.2	-3,647.8	-1,180.5	3,834.0	3.00	-3.00	
8,200.0	6.43	200.21	6,914.3	-3,660.7	-1,185.3	3,847.8	3.00	-3.00	
8,300.0	3.43	200.21	7,013.9	-3,668.8	-1,188.2	3,856.4	3.00	-3.00	
8,400.0	0.43	200.21	7,113.8	-3,672.0	-1,189.4	3,859.7	3.00	-3.00	
8,414.2	0.00	0.00	7,128.0	-3,672.0	-1,189.4	3,859.8	3.00	-3.00	EOD @ Inc. = 0° - WILLIAMS FORK
8,500.0	0.02	239.50	7,213.8	-3,672.0	-1,189.4	3,859.8	0.02	0.02	
8,600.0	0.04	239.50	7,313.8	-3,672.0	-1,189.5	3,859.8	0.02	0.02	
8,700.0	0.07	239.50	7,413.8	-3,672.1	-1,189.5	3,859.9	0.02	0.02	
8,800.0	0.09	239.50	7,513.8	-3,672.2	-1,189.7	3,860.0	0.02	0.02	
8,900.0	0.12	239.50	7,613.8	-3,672.2	-1,189.8	3,860.2	0.02	0.02	
9,000.0	0.14	239.50	7,713.8	-3,672.4	-1,190.0	3,860.3	0.02	0.02	
9,100.0	0.16	239.50	7,813.8	-3,672.5	-1,190.2	3,860.5	0.02	0.02	
9,200.0	0.19	239.50	7,913.8	-3,672.6	-1,190.5	3,860.7	0.02	0.02	
9,300.0	0.21	239.50	8,013.8	-3,672.8	-1,190.8	3,861.0	0.02	0.02	
9,400.0	0.23	239.50	8,113.8	-3,673.0	-1,191.1	3,861.3	0.02	0.02	

# Cathedral Energy Services

## Planning Report

<b>Database:</b>	USA EDM 5000 Multi Users DB	<b>Local Co-ordinate Reference:</b>	Well UWF02B-09 H04 596
<b>Company:</b>	EnCana Oil & Gas (USA) Inc	<b>TVD Reference:</b>	KBE @ 8293.0ft (Original Well Elev)
<b>Project:</b>	North Piceance	<b>MD Reference:</b>	KBE @ 8293.0ft (Original Well Elev)
<b>Site:</b>	H04 Pad	<b>North Reference:</b>	True
<b>Well:</b>	UWF02B-09 H04 596	<b>Survey Calculation Method:</b>	Minimum Curvature
<b>Wellbore:</b>	DD		
<b>Design:</b>	Plan #1		

Planned Survey									
Measured Depth (ft)	Inclination (°)	Azimuth (°)	Vertical Depth (ft)	+N/-S (ft)	+E/-W (ft)	Vertical Section (ft)	Dogleg Rate (°/100ft)	Build Rate (°/100ft)	Comments / Formations
9,500.0	0.26	239.50	8,213.8	-3,673.2	-1,191.5	3,861.6	0.02	0.02	
9,600.0	0.28	239.50	8,313.8	-3,673.5	-1,191.9	3,862.0	0.02	0.02	
9,700.0	0.30	239.50	8,413.8	-3,673.7	-1,192.3	3,862.4	0.02	0.02	
9,800.0	0.33	239.50	8,513.8	-3,674.0	-1,192.8	3,862.8	0.02	0.02	
9,900.0	0.35	239.50	8,613.8	-3,674.3	-1,193.3	3,863.2	0.02	0.02	
10,000.0	0.38	239.50	8,713.8	-3,674.6	-1,193.9	3,863.7	0.02	0.02	
10,100.0	0.40	239.50	8,813.8	-3,675.0	-1,194.5	3,864.2	0.02	0.02	
10,200.0	0.42	239.50	8,913.8	-3,675.3	-1,195.1	3,864.7	0.02	0.02	
10,215.3	0.43	239.50	8,929.1	-3,675.4	-1,195.2	3,864.8	0.02	0.02	
10,300.0	0.43	239.50	9,013.8	-3,675.7	-1,195.7	3,865.3	0.00	0.00	
10,400.0	0.43	239.50	9,113.8	-3,676.1	-1,196.4	3,865.9	0.00	0.00	
10,500.0	0.43	239.50	9,213.8	-3,676.5	-1,197.0	3,866.4	0.00	0.00	
10,600.0	0.43	239.50	9,313.8	-3,676.9	-1,197.7	3,867.0	0.00	0.00	
10,700.0	0.43	239.50	9,413.8	-3,677.2	-1,198.3	3,867.5	0.00	0.00	
10,800.0	0.43	239.50	9,513.8	-3,677.6	-1,198.9	3,868.1	0.00	0.00	
10,900.0	0.43	239.50	9,613.8	-3,678.0	-1,199.6	3,868.7	0.00	0.00	
11,000.0	0.43	239.50	9,713.8	-3,678.4	-1,200.2	3,869.2	0.00	0.00	
11,100.0	0.43	239.50	9,813.8	-3,678.8	-1,200.9	3,869.8	0.00	0.00	
11,200.0	0.43	239.50	9,913.8	-3,679.1	-1,201.5	3,870.3	0.00	0.00	
11,300.0	0.43	239.50	10,013.8	-3,679.5	-1,202.1	3,870.9	0.00	0.00	
11,400.0	0.43	239.50	10,113.8	-3,679.9	-1,202.8	3,871.5	0.00	0.00	
11,500.0	0.43	239.50	10,213.8	-3,680.3	-1,203.4	3,872.0	0.00	0.00	
11,600.0	0.43	239.50	10,313.8	-3,680.6	-1,204.1	3,872.6	0.00	0.00	
11,700.0	0.43	239.50	10,413.8	-3,681.0	-1,204.7	3,873.1	0.00	0.00	
11,800.0	0.43	239.50	10,513.8	-3,681.4	-1,205.4	3,873.7	0.00	0.00	
11,900.0	0.43	239.50	10,613.8	-3,681.8	-1,206.0	3,874.3	0.00	0.00	
11,957.2	0.43	239.50	10,671.0	-3,682.0	-1,206.4	3,874.6	0.00	0.00	TD @ 11,957.2' MD - ROLLINS
12,000.0	0.43	239.50	10,713.8	-3,682.2	-1,206.6	3,874.8	0.00	0.00	
12,100.0	0.43	239.50	10,813.8	-3,682.5	-1,207.3	3,875.4	0.00	0.00	
12,200.0	0.43	239.50	10,913.8	-3,682.9	-1,207.9	3,875.9	0.00	0.00	
12,248.2	0.43	239.50	10,962.0	-3,683.1	-1,208.2	3,876.2	0.00	0.00	COZZETTE
12,300.0	0.43	239.50	11,013.8	-3,683.3	-1,208.6	3,876.5	0.00	0.00	
12,400.0	0.43	239.50	11,113.7	-3,683.7	-1,209.2	3,877.1	0.00	0.00	
12,420.3	0.43	239.50	11,134.0	-3,683.7	-1,209.3	3,877.2	0.00	0.00	CORCORAN
12,500.0	0.43	239.50	11,213.7	-3,684.0	-1,209.8	3,877.6	0.00	0.00	
12,600.0	0.43	239.50	11,313.7	-3,684.4	-1,210.5	3,878.2	0.00	0.00	
12,700.0	0.43	239.50	11,413.7	-3,684.8	-1,211.1	3,878.7	0.00	0.00	
12,707.3	0.43	239.50	11,421.0	-3,684.8	-1,211.2	3,878.8	0.00	0.00	UPPER SEGO
12,800.0	0.43	239.50	11,513.7	-3,685.2	-1,211.8	3,879.3	0.00	0.00	
12,900.0	0.43	239.50	11,613.7	-3,685.6	-1,212.4	3,879.9	0.00	0.00	
13,000.0	0.43	239.50	11,713.7	-3,685.9	-1,213.1	3,880.4	0.00	0.00	Permit TD @ 13,000' MD

# Cathedral Energy Services

## Planning Report

<b>Database:</b>	USA EDM 5000 Multi Users DB	<b>Local Co-ordinate Reference:</b>	Well UWF02B-09 H04 596
<b>Company:</b>	EnCana Oil & Gas (USA) Inc	<b>TVD Reference:</b>	KBE @ 8293.0ft (Original Well Elev)
<b>Project:</b>	North Piceance	<b>MD Reference:</b>	KBE @ 8293.0ft (Original Well Elev)
<b>Site:</b>	H04 Pad	<b>North Reference:</b>	True
<b>Well:</b>	UWF02B-09 H04 596	<b>Survey Calculation Method:</b>	Minimum Curvature
<b>Wellbore:</b>	DD		
<b>Design:</b>	Plan #1		

Targets									
Target Name	Dip Angle	Dip Dir.	TVD	+N/-S	+E/-W	Northing	Easting	Latitude	Longitude
- hit/miss target	(°)	(°)	(ft)	(ft)	(ft)	(ft)	(ft)		
- Shape									
UWF02B-09 PBHL - plan hits target center - Rectangle (sides W30.0 H50.0 D0.0)	0.00	0.00	10,671.0	-3,682.0	-1,206.4	1,667,416.78	2,248,291.47	39° 38' 7.89 N	108° 10' 9.95 W
UWF02B-09 TGT - plan hits target center - Point	0.00	0.00	7,128.0	-3,672.0	-1,189.4	1,667,426.28	2,248,308.72	39° 38' 7.99 N	108° 10' 9.73 W

Formations						
Measured Depth	Vertical Depth	Name	Lithology	Dip	Dip Direction	
(ft)	(ft)			(°)	(°)	
1,040.1	1,037.0	A GROOVE				
1,207.0	1,202.0	B GROOVE				
1,247.6	1,242.0	B GROOVE BASE				
2,073.5	2,018.0	GARDEN GULCH				
3,412.1	3,067.0	WASATCH FM				
6,082.1	5,129.0	WASATCH G				
8,414.2	7,128.0	WILLIAMS FORK				
11,957.2	10,671.0	ROLLINS				
12,248.2	10,962.0	COZZETTE				
12,420.3	11,134.0	CORCORAN				
12,707.3	11,421.0	UPPER SEGO				

Plan Annotations					
Measured Depth	Vertical Depth	Local Coordinates		Comment	
(ft)	(ft)	+N/-S	+E/-W		
		(ft)	(ft)		
600.0	600.0	0.0	0.0	KOP @ 600'	
2,391.4	2,278.7	-457.0	-6.1	EOB @ Inc. = 39.44°	
7,099.5	5,914.7	-3,263.9	-1,039.2	Start 3° Drop	
8,414.2	7,128.0	-3,672.0	-1,189.4	EOD @ Inc. = 0°	
11,957.2	10,671.0	-3,682.0	-1,206.4	TD @ 11,957.2' MD	
13,000.0	11,713.7	-3,685.9	-1,213.1	Permit TD @ 13,000' MD	