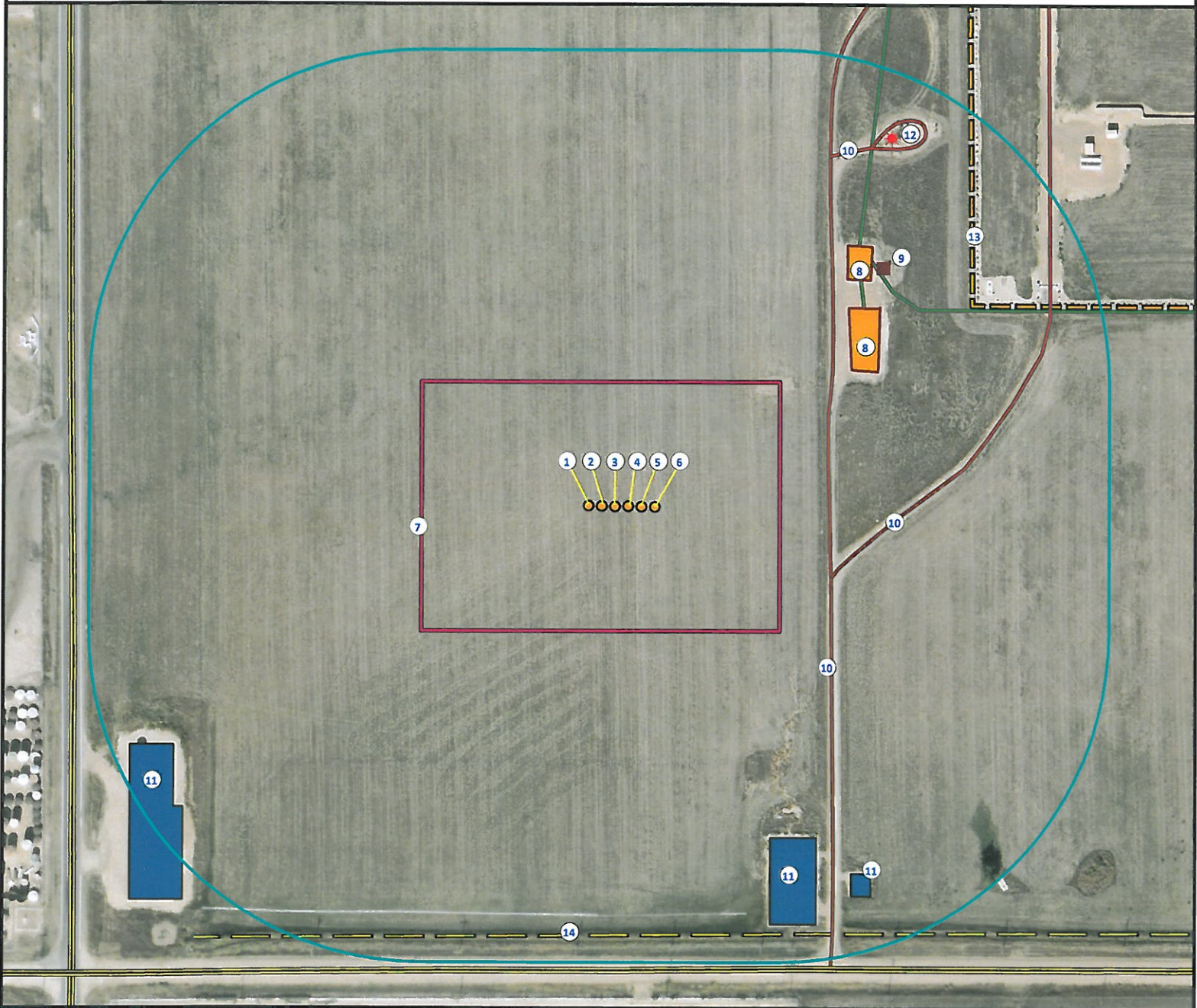


Location Drawing

XCEL 36-27

Multi Well Pad

SW¼ SW¼ SECTION 27, TOWNSHIP 1 NORTH, RANGE 67 WEST OF THE 6TH PRINCIPAL MERIDIAN



- | | | | |
|------------------------------|--|---|---------------------------|
| 1. Proposed well XCEL 13-27. | 5. Proposed well XCEL 36-27. | 9. Emissions Control Device is ±411' NE. | 13. Fence is ±467' NE. |
| 2. Proposed well XCEL 12-27. | 6. Proposed well XCEL 14-27. | 10. Private roads are ±480' NE, ±226' E, and ±245' SE. | 14. Powerline is ±517' S. |
| 3. Proposed well XCEL 34-27. | 7. Operational Disturbance Area. | 11. Pipeline enclosures are ±426' SE, ±511' SE, and ±633' SW. | |
| 4. Proposed well XCEL 35-27. | 8. Facilities are ±303' NE and ±371' NE. | 12. Existing well UPRR 42 PAN AM C is ±538' NE. | |

Legend

- | | | |
|---------------|----------------------|----------------------|
| Proposed Well | Disturbance Area | Power Line |
| ECD | 400' Radius | Private Road |
| Existing Well | Facilities Enclosure | Underground Pipeline |
| Public Road | Oil & Gas Equipment | Fence |

Reference Location

** All Measurements are Made from Reference Well XCEL 36-27 **
 Lat: 40.016367° Long: -104.883579° (NAD83)
 Elevation: 5028 Feet

Surface Use: Dry Land Crop



Use our resources to find yours!
www.petro-fs.com
 (303) 928-7128

Field Date: 04/16/2012
 Drafting Date: 04/23/2012
 Drafter: KLM
 Checked By: BHF

Data Sources:
 - Aerial courtesy of Anadarko Petroleum Corporation (2010)

Prepared for: **Anadarko**
 Petroleum Corporation
KERR-MCGEE OIL & GAS ONSHORE LP