

April 25, 2012

Mr. Craig Rasmuson  
Manager, Land and Field Operations  
Synergy Resources Corporation  
20203 Highway 60  
Platteville, Colorado 80651



**LAMP RYNEARSON**  
**& ASSOCIATES**  
ENGINEERS | SURVEYORS | PLANNERS

4715 Innovation Drive, Suite 100  
Fort Collins, Colorado 80525  
[P] 970.226.0342  
[F] 970.226.0879  
www.LRA-Inc.com

**Re: COGCC Rules 318A(l).a.(4)D and 318A(l).e.(6)**  
**Horizontal Wellbore Spacing Unit Notice**  
**Well: Bestway 6-11**  
**Township 5N, Range 66W, 6th PM**  
**Surface Location: Section 2, Northeast Quarter**  
**Bottom Hole Location: Section 11, Northeast Quarter**  
**Greeley, Colorado**

Dear Mr. Rasmuson:

The Colorado Oil and Gas Conservation Commission (COGCC) has adopted guidelines and procedures regarding proposed wellbore spacing units for horizontal wells. Mineral Resources is proposing to drill the above referenced horizontal well where a drilling and spacing unit does not exist. Pursuant to Rules 318A(l).a.(4)D and 318A(l).e.(6), Mineral Resources must designate a proposed horizontal wellbore spacing unit and provide notice to all owners within the proposed wellbore spacing unit. As an owner in the proposed wellbore spacing unit, we are providing you with this notice. Per the COGCC rules, each owner shall have a thirty (30) day period after receipt of such notice to object in writing to the operator.

By signing this letter you hereby acknowledge having received notice of the proposed horizontal wellbore spacing unit by Mineral Resources and you waive your thirty (30) day objection period.

We would like to thank you for your assistance in this matter. If you have any questions, do not hesitate to call us at (970) 226-0342.

Sincerely,

**LAMP, RYNEARSON & ASSOCIATES, INC.**

Erin Mathews, PE  
Designated Agent  
Mineral Resources, Inc.

ekm/jz

Synergy Resources Corporation waives the notice and thirty day (30) objection period.

  
\_\_\_\_\_  
Craig Rasmuson, Synergy Resources Corporation

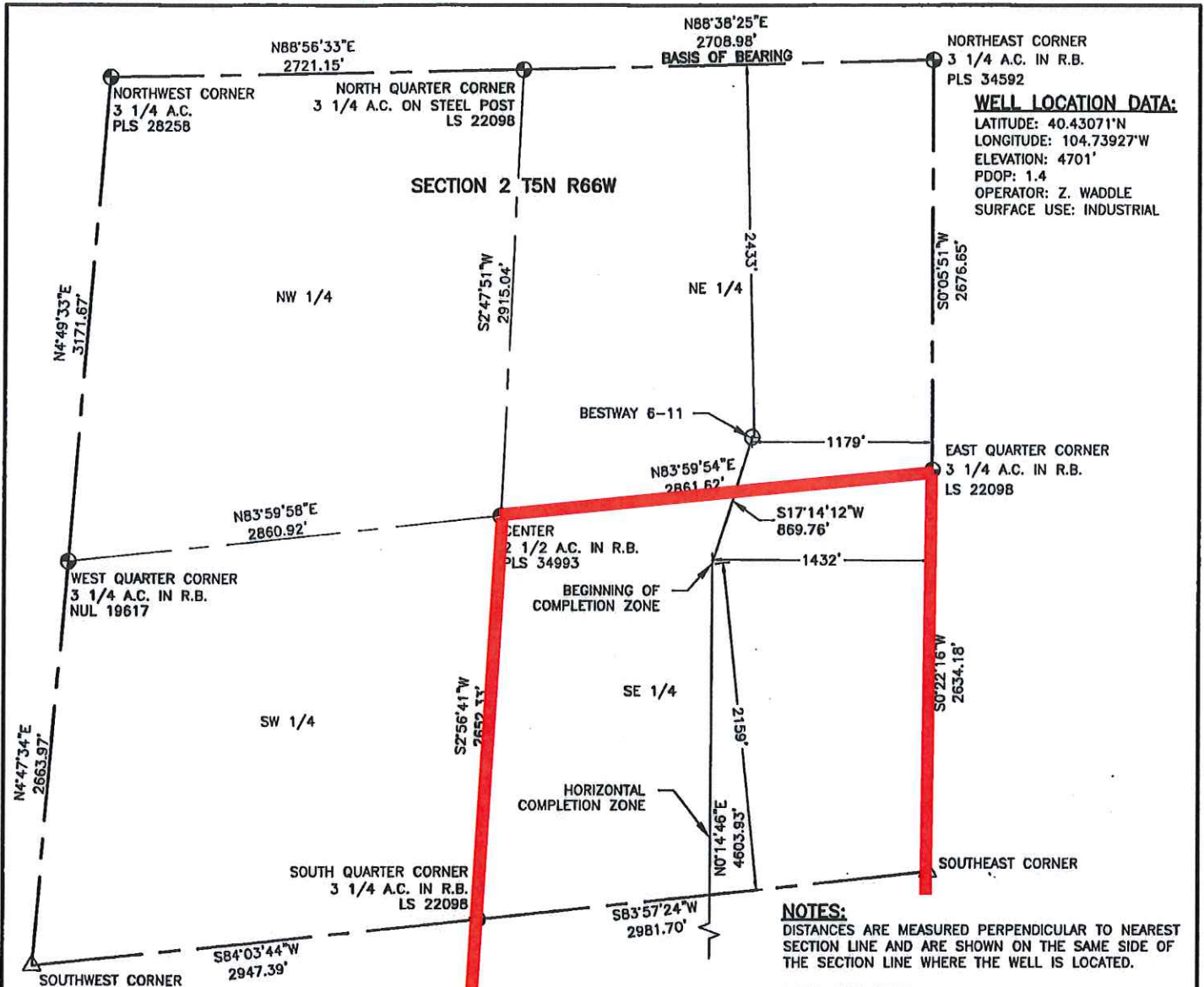
Ed Holloway

5-1-12  
\_\_\_\_\_  
Date

*Leaving a Legacy of Enduring Improvements to Our Communities* - PURPOSE STATEMENT

ENGINEERS SURVEYORS PLANNERS

# BESTWAY 6-11: SPACING UNIT PLAN



## WELL LOCATION DATA:

LATITUDE: 40.430711°N  
LONGITUDE: 104.73927°W  
ELEVATION: 4701'  
PDOP: 1.4  
OPERATOR: Z. WADDLE  
SURFACE USE: INDUSTRIAL

## NOTES:

DISTANCES ARE MEASURED PERPENDICULAR TO NEAREST SECTION LINE AND ARE SHOWN ON THE SAME SIDE OF THE SECTION LINE WHERE THE WELL IS LOCATED.

## BASIS OF BEARING:

THE NORTH LINE OF THE NORTHEAST QUARTER OF SECTION 2-T5N-R66W BEARS N88°38'25"E BETWEEN THE NORTH QUARTER CORNER OF SECTION 2 MONUMENTED WITH 3 1/4" A.C. STAMPED "PLS 22098" AND THE NORTHEAST CORNER OF SECTION 2 MONUMENTED WITH A 3 1/4" A.C. IN R.B. STAMPED "LS 34592" BASED ON THE COLORADO NORTH 0501 COORDINATE SYSTEM.

ELEVATIONS ARE NAVD 88, USING THE CONUS GEOID 03 AS OBSERVED FROM GPS OBSERVATIONS

## LAND SURVEYOR'S CERTIFICATION

LAMP, RYNEARSON & ASSOCIATES, INC., OF FT. COLLINS, COLORADO HAS IN ACCORDANCE WITH A REQUEST FROM COLLIN RICHARDSON FOR MINERAL RESOURCES, INC., DETERMINED THE SURFACE LOCATION OF THE WELL DESIGNATED AS BESTWAY 6-11 TO BE 2433' FROM THE NORTH LINE AND 1179' FROM THE EAST LINE OF SECTION 2, TOWNSHIP 5 NORTH, RANGE 66 WEST OF THE 6TH P.M., WELD COUNTY, COLORADO.

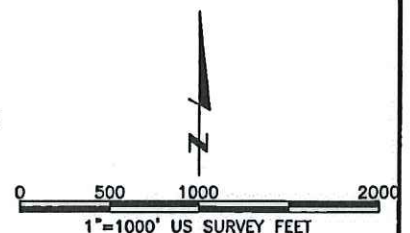


DAVID JOHN BERGLUND  
COLORADO PLS 38199

DATE OF SURVEY: 8/19/2010 (SECTION CONTROL)  
DATE OF SURVEY: 5/18/2011 (WELL LOCATION)

## LEGEND

- ⊙ ALIQUOT CORNER
- ⊙ BOTTOM HOLE
- △ COMPUTED ALIQUOT FROM MONUMENT ACCESSORIES
- ⊙ PROPOSED WELL
- A.C. ALUMINUM CAP
- R.B. RANGE BOX



**LAMP RYNEARSON  
& ASSOCIATES**

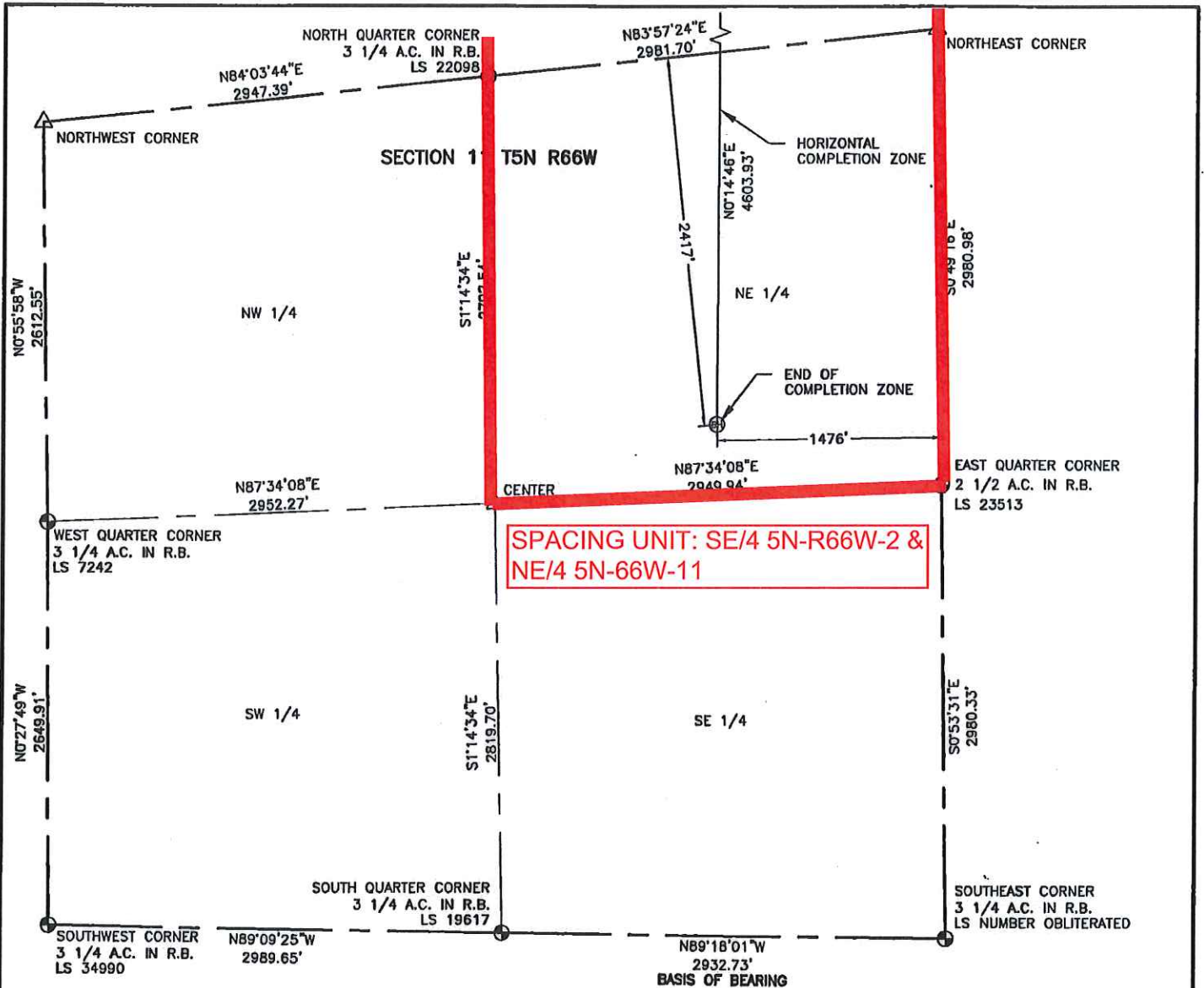
4715 Innovation Drive 970.226.0342 | P  
Fort Collins, CO 80525 970.226.0879 | F  
www.LRA-Inc.com

Proposed Well Location Exhibit  
Bestway 6-11  
1 of 2

drawn by	date	cogcc id	project - task number	book and page	surface - location
KJW	2/10/12		0210013.00	MR-01 5-6	SE/4, NE/4, SEC 2 T5N R66W
path\\filename P:\Engineering\0210013 MRI Bestway\DRAWINGS\EXHIBITS\0210013EXWPJ.dwg					



# BESTWAY 6-11: SPACING UNIT PLAN



## NOTES:

DISTANCES ARE MEASURED PERPENDICULAR TO NEAREST SECTION LINE AND ARE SHOWN ON THE SAME SIDE OF THE SECTION LINE WHERE THE WELL IS LOCATED.

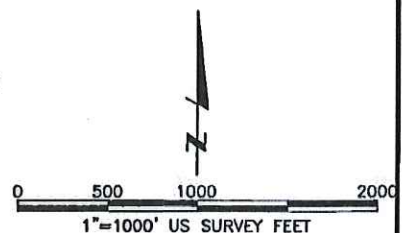
## BASIS OF BEARING:

THE SOUTH LINE OF THE SOUTHEAST QUARTER OF SECTION 11-T5N-R66W BEARS N89°18'01"W BETWEEN THE SOUTHEAST CORNER OF SECTION 11 MONUMENTED WITH A 3 1/4" A.C. IN R.B. LS NUMBER OBLITERATED AND THE SOUTH QUARTER CORNER OF SECTION 11 MONUMENTED WITH A 3 1/4" A.C. IN R.B. STAMPED "LS 19617" BASED ON THE COLORADO NORTH 0501 COORDINATE SYSTEM.

ELEVATIONS ARE NAVD 88, USING THE CONUS GEOID 03 AS OBSERVED FROM GPS OBSERVATIONS

## LEGEND

- ⊙ ALIQUOT CORNER
- ⊙ BOTTOM HOLE
- △ COMPUTED ALIQUOT FROM MONUMENT ACCESSORIES
- ⊙ PROPOSED WELL
- A.C. ALUMINUM CAP
- R.B. RANGE BOX



**LAMP RYNEARSON  
& ASSOCIATES**

4715 Innovation Drive 970.226.0342 | P  
Fort Collins, CO 80525 970.226.0879 | F  
www.LRA-Inc.com

Proposed Well Location Exhibit  
Bestway 6-11  
2 of 2

drawn by	date	cogcc id	project - task number	book and page
KJW	2/10/12		0210013.00	MR-01 5-6
path\filename P:\_Engineering\0210013 MRI Bestway\DRAWINGS\EXHIBITS\0210013EXWPJA.dwg				

surface - location  
SE/4, NE/4, SEC 2 T5N R66W