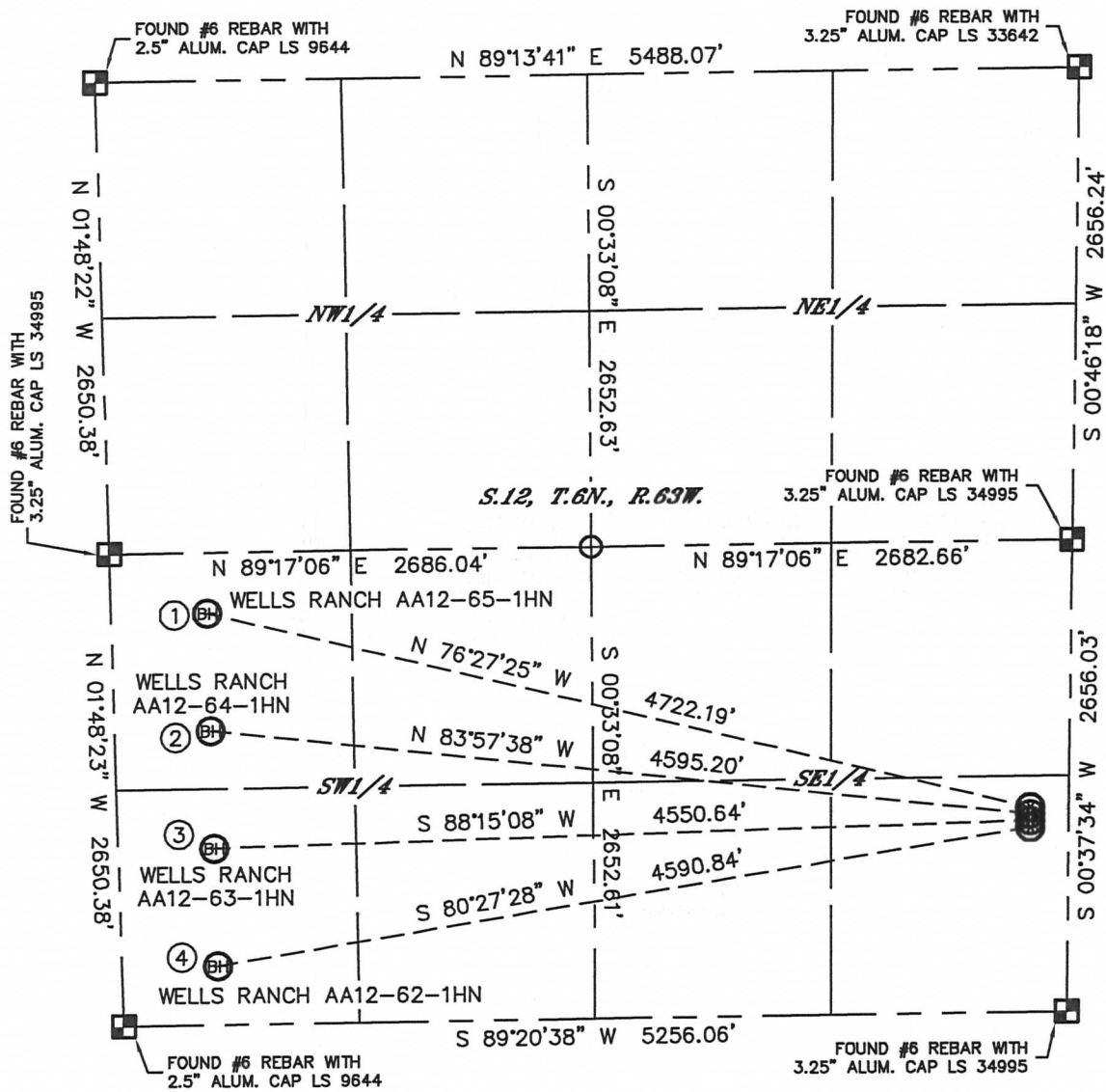


# MULTI-WELL PLAN

WELLS RANCH AA12-65-1HN PAD

THIS MAP DOES NOT REPRESENT A BOUNDARY SURVEY

SECTION: 12  
TOWNSHIP: 6N  
RANGE: 63W



①  
-BOTTOM HOLE-  
WELLS RANCH  
AA12-65-1HN  
2310' FSL  
535' FWL  
LAT: 40.50018°N  
LONG: 104.39243°W

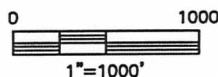
②  
-BOTTOM HOLE-  
WELLS RANCH  
AA12-64-1HN  
1650' FSL  
535' FWL  
LAT: 40.49837°N  
LONG: 104.39239°W

③  
-BOTTOM HOLE-  
WELLS RANCH  
AA12-63-1HN  
990' FSL  
535' FWL  
LAT: 40.49656°N  
LONG: 104.39234°W

④  
-BOTTOM HOLE-  
WELLS RANCH  
AA12-62-1HN  
330' FSL  
535' FWL  
LAT: 40.49475°N  
LONG: 104.39230°W

## LEGEND

- = ALIQUOT MONUMENT AS DESCRIBED
- = CALCULATED POSITION



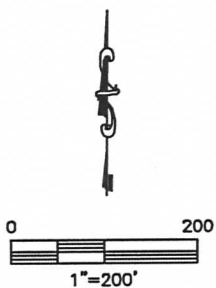
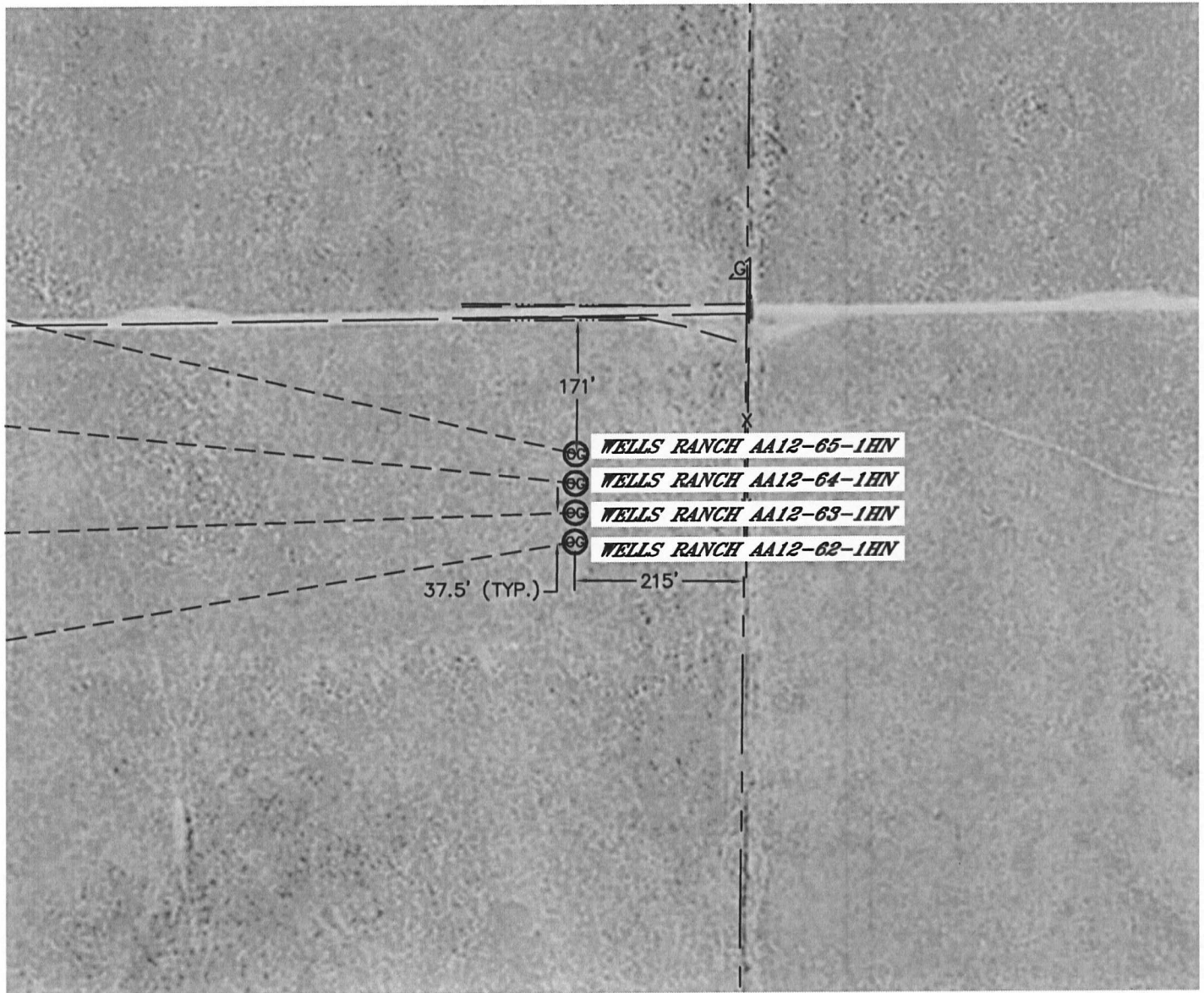
DATE: 2/20/2012  
PROJECT#: 2011002

Lat40°, Inc. 1635 Foxtrail Drive, Suite 325 Loveland, CO 970-776-3321

# MULTI-WELL PLAN

WELLS RANCH AA12-65-1HN PAD

SECTION: 12  
TOWNSHIP: 6N  
RANGE: 63W



DATE: 2/20/2012  
PROJECT#: 2011002