

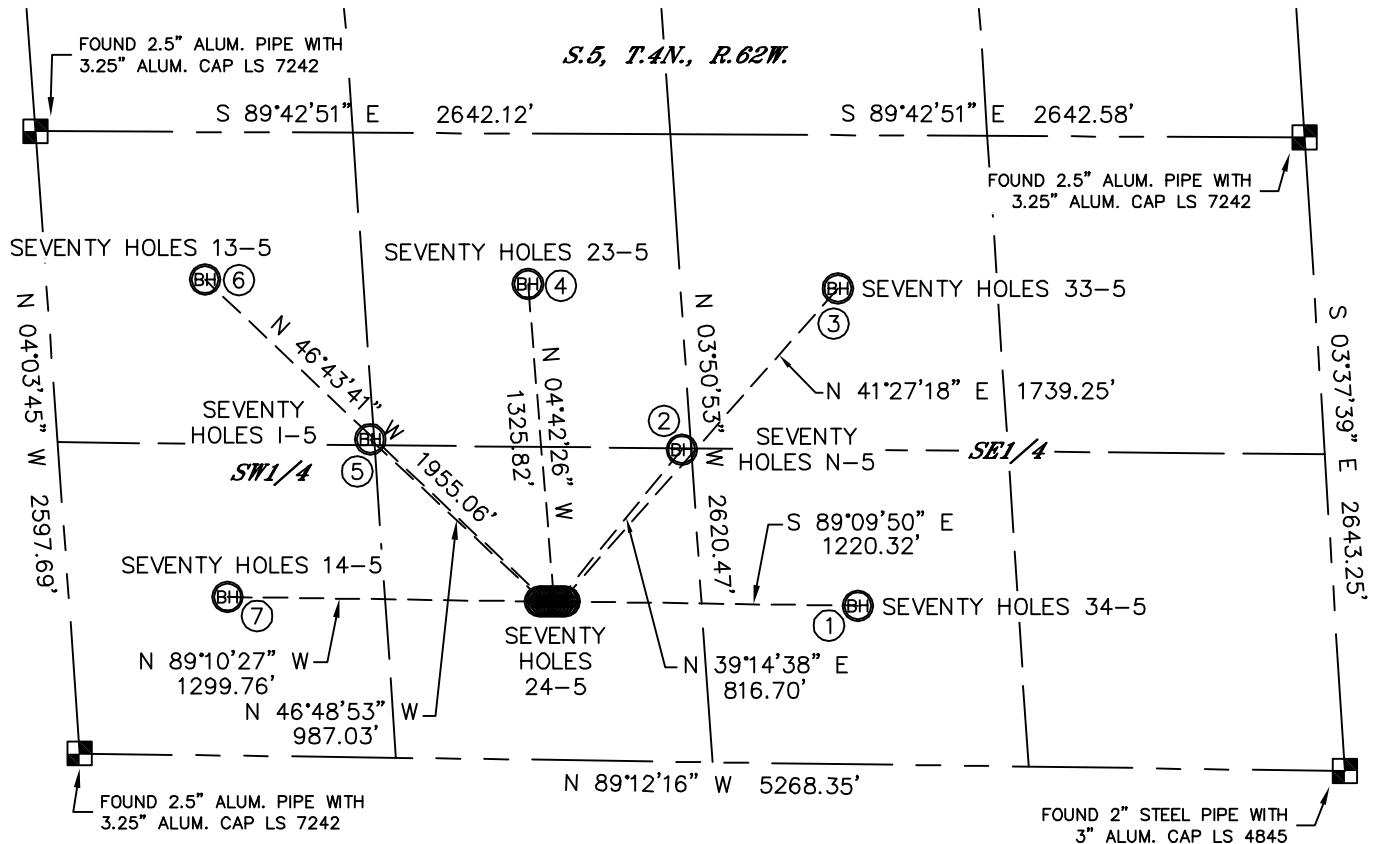


MULTI-WELL PLAN

SEVENTY HOLES 24-5 PAD

THIS MAP DOES NOT REPRESENT A BOUNDARY SURVEY

SECTION: 5
TOWNSHIP: 4N
RANGE: 62W



①
-BOTTOM HOLE-
SEVENTY HOLES 34-5
660' FSL
1980' FWL
LAT-40.33591°N
LONG-104.34719°W

②
-BOTTOM HOLE-
SEVENTY HOLES N-5
1300' FSL
2590' FWL
LAT-40.33772°N
LONG-104.34979°W

③
-BOTTOM HOLE-
SEVENTY HOLES 33-5
1980' FSL
1980' FWL
LAT-40.33953°N
LONG-104.34743°W

④
-BOTTOM HOLE-
SEVENTY HOLES 23-5
1980' FSL
2000' FWL
LAT-40.33963°N
LONG-104.35205°W

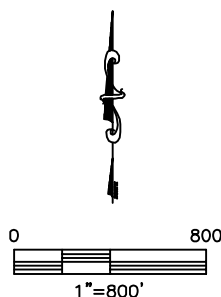
⑤
-BOTTOM HOLE-
SEVENTY HOLES 1-5
1325' FSL
1300' FWL
LAT-40.33788°N
LONG-104.35443°W

⑥
-BOTTOM HOLE-
SEVENTY HOLES 13-5
1980' FSL
660' FWL
LAT-40.33973°N
LONG-104.35687°W

⑦
-BOTTOM HOLE-
SEVENTY HOLES 14-5
660' FSL
660' FWL
LAT-40.33610°N
LONG-104.35660°W

LEGEND

- = ALIQUOT MONUMENT AS DESCRIBED
- = CALCULATED POSITION



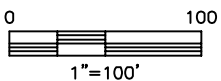
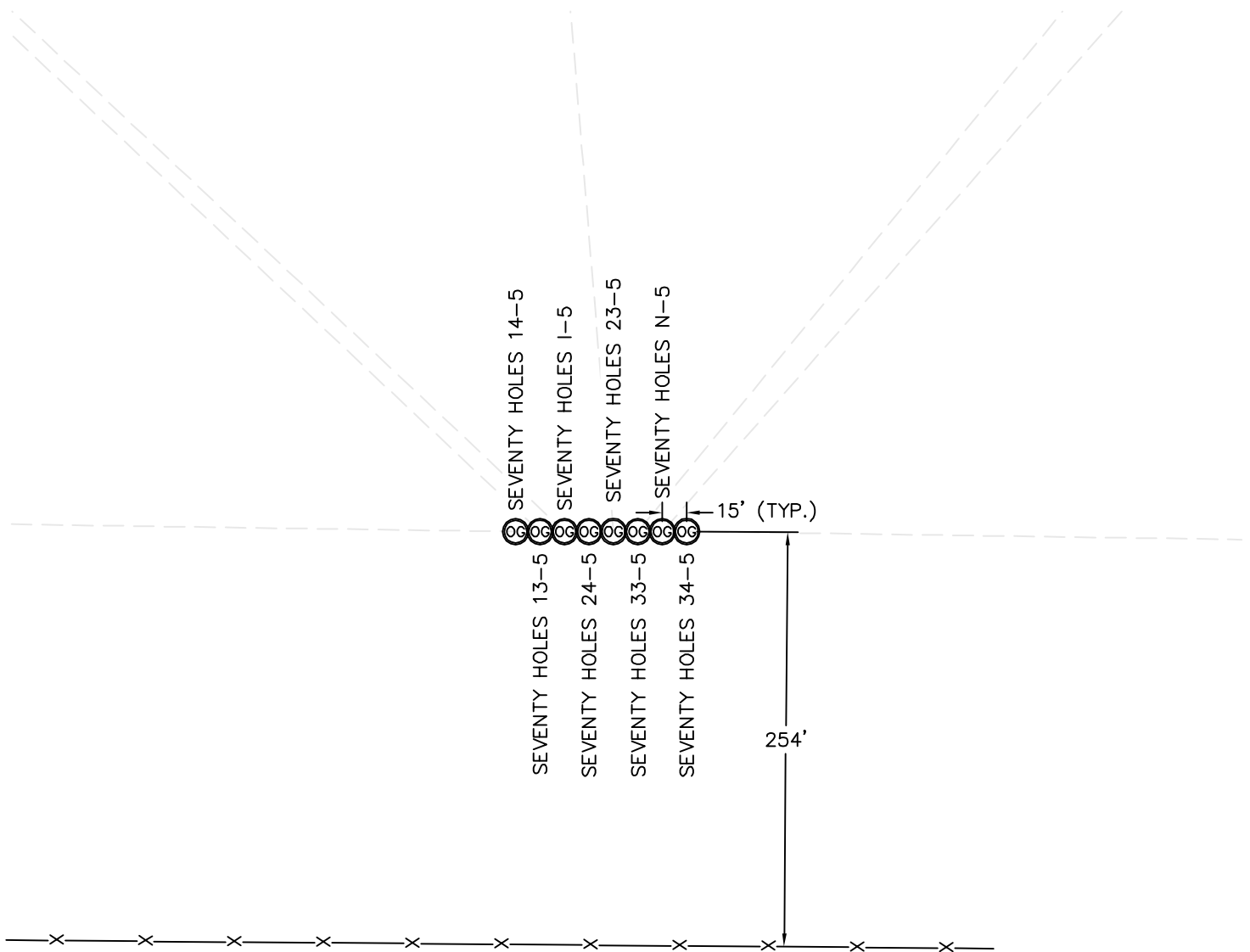


Lat40°, Inc. 1635 Foxtrail Drive, Suite 325 Loveland, CO 970-776-3321

MULTI-WELL PLAN

SEVENTY HOLES 24-5 PAD

SECTION: 5
TOWNSHIP: 4N
RANGE: 62W



DATE: rev.4/16/2012
PROJECT#: 2012024