

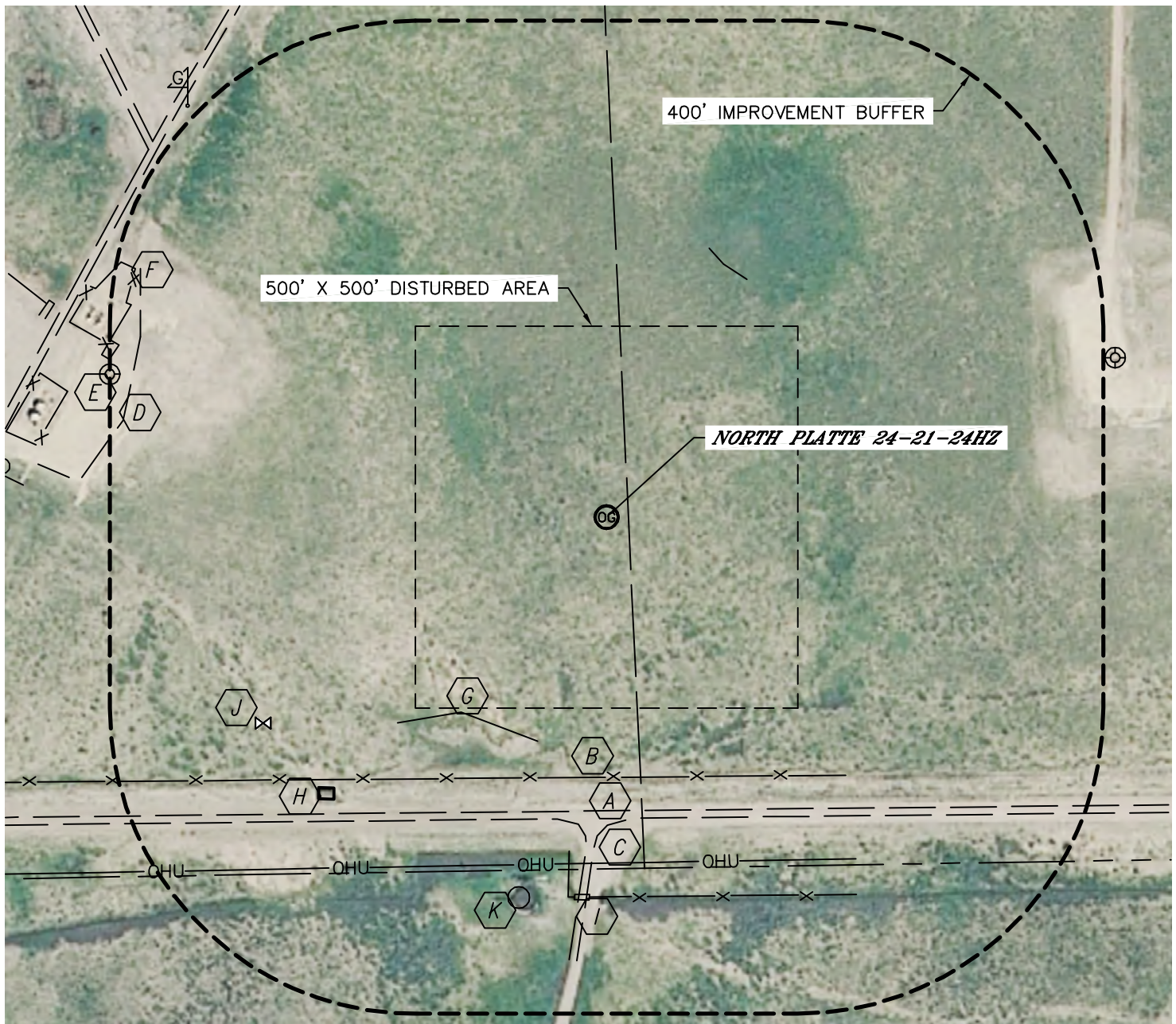


Lat40°, Inc. 1635 Foxtrail Drive, Suite 325 Loveland, CO 970-776-3321

LOCATION DRAWING

NORTH PLATTE 24-21-24HZ

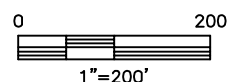
SECTION: 24
TOWNSHIP: 5N
RANGE: 63W



IMPROVEMENTS:

- | | |
|--|--|
| A FIELD ROAD 389' S, 434' SW | G LOW AREA 365' NE, 307' SW |
| B FENCE 340' & 497' S | H WELL PUMP HOUSE 503' SW |
| C OVERHEAD UTILITY 483' S | I CATTLE GUARD 495' S |
| D EDGE OF GRAVEL EQ. PAD 645' NW | J WATER VALVE 524' SW |
| E EX. O&G WELL 676' NW | K WINDMILL & WATER TANK 499' SW |
| F EX. PRODUCTION EQUIPMENT (BONANZA CREEK) 677' & 681' NW | |

NEAREST: BUILDING (WELL PUMP HOUSE) 503' SW, PUBLIC ROAD 5280'+,
ABOVE GROUND UTILITY 483' S, RAILROAD 5280'+, PROPERTY LINE 460' S



DATE: 4/12/2012
PROJECT#: 2012050