

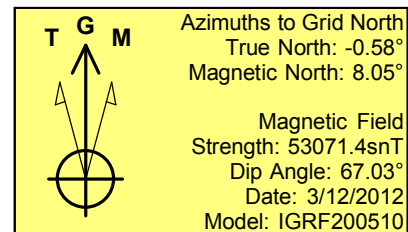
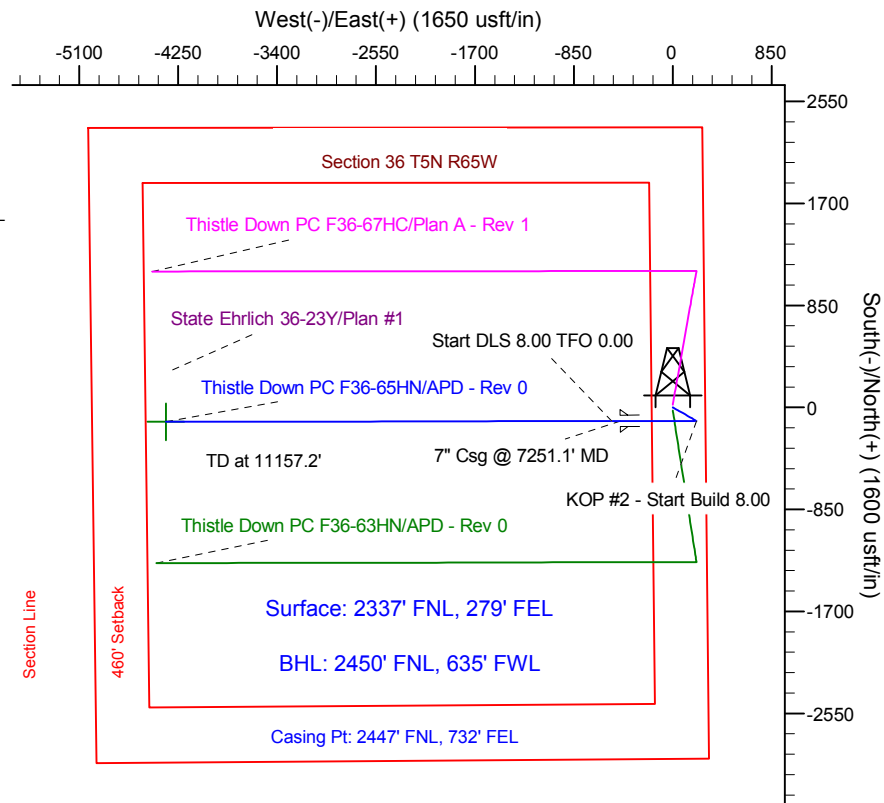
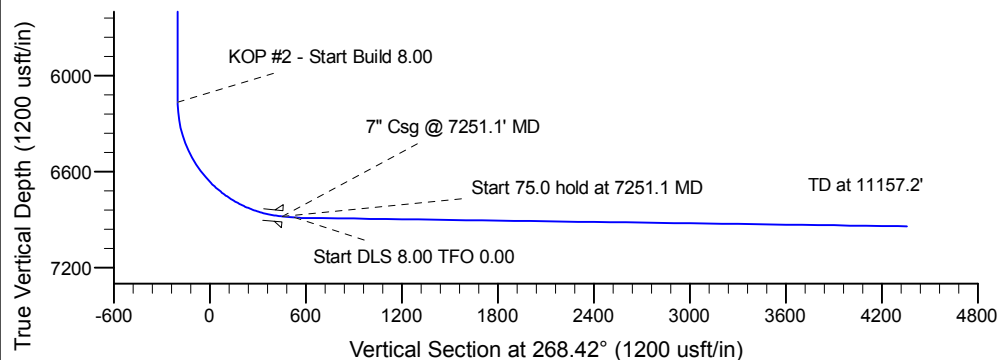
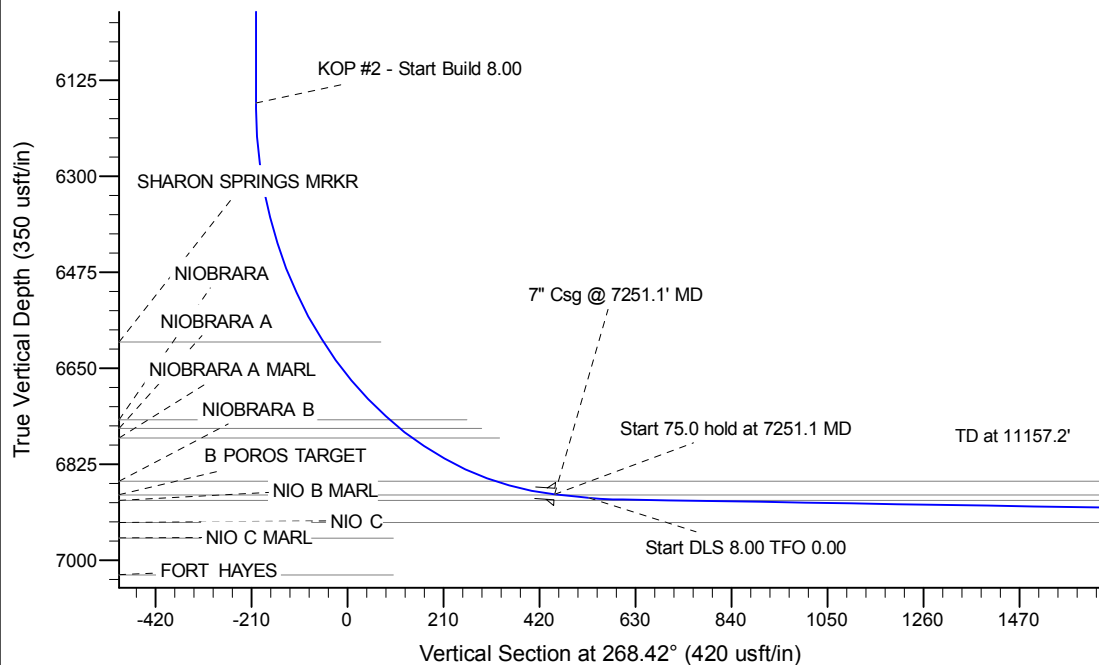
Project: Wattenberg Field
 Site: F (Sec.36-T05N-R65W) Weld County, CO
 Well: Thistle Down PC F36-65HN
 Wellbore: Original Drilling
 Design: APD - Rev 0

Northern Region Drilling

Geodetic System: US State Plane 1983
 Datum: North American Datum 1983
 Ellipsoid: GRS 1980
 Zone: Colorado Northern Zone
 System Datum: Mean Sea Level

SECTION DETAILS

Sec	MD	Inc	Azi	TVD	+N/-S	+E/-W	Dleg	TFace	VSec	Target
0	0.0	0.00	0.00	0.0	0.0	0.0	0.00	0.00	0.0	
1	2000.0	0.00	0.00	2000.0	0.0	0.0	0.00	0.00	0.0	
2	2522.4	13.06	118.98	2517.9	-28.7	51.9	2.50	118.98	-51.0	
3	3029.8	13.06	118.98	3012.1	-84.3	152.1	0.00	0.00	-149.8	
4	3552.1	0.00	0.00	3530.0	-113.0	204.0	2.50	180.00	-200.8	
5	6188.6	0.00	0.00	6166.5	-113.0	204.0	0.00	0.00	-200.8	
6	7251.1	85.00	269.91	6879.9	-114.0	-449.8	8.00	269.91	452.7	
7	7326.1	85.00	269.91	6886.5	-114.1	-524.5	0.00	0.00	527.4	
8	7378.6	89.20	269.91	6889.1	-114.2	-576.9	8.00	0.00	579.9	
9	11157.2	89.20	269.91	6941.8	-120.2	-4355.1	0.00	0.00	4356.8	Thistle Down PC G36-65HN BHL 2450'FNL, 635'FWL



WELL DETAILS: Thistle Down PC F36-65HN

Ground Level: 4770.0
 Northing: 1373959.58 Easting: 3249968.86 Latitude: 40.356450 Longitude: -104.603040

Plan: APD - Rev 0 (Thistle Down PC F36-65HN/Original Drilling)

Created By: Carrie Willers Date: 9:36, March 14 2012

OK to submit with 2A as per Noble Drilling
3/14/2012 1:54