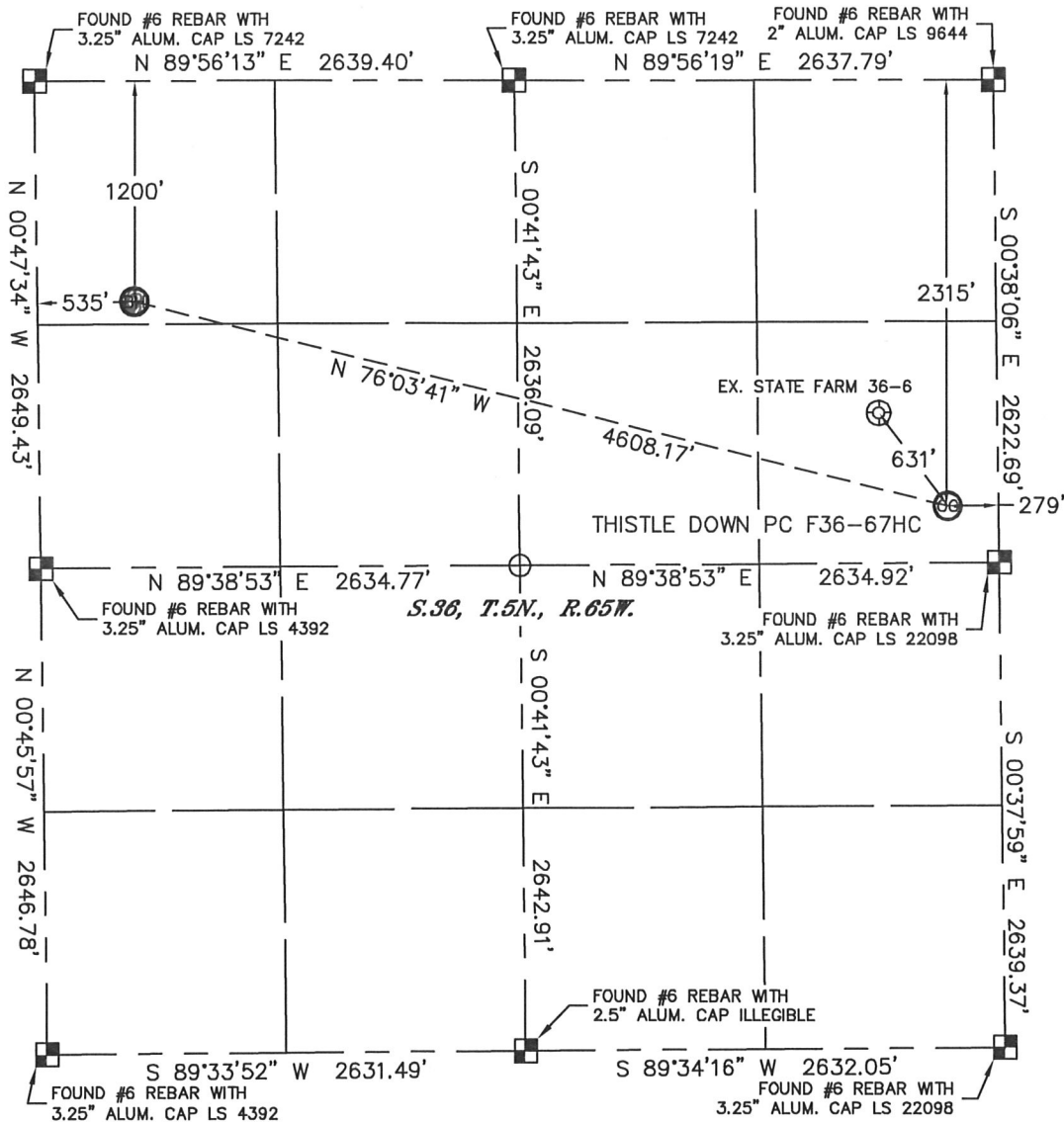


WELL LOCATION CERTIFICATE

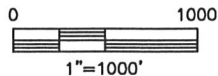
THIS MAP DOES NOT REPRESENT A BOUNDARY SURVEY

SECTION: 36
TOWNSHIP: 5N
RANGE: 65W



In accordance with a request from Jacob Rice with Noble Energy Inc. Lat40°, Inc. has determined the surface location of the THISTLE DOWN PC F36-67HC to be 2315' from the NORTH line and 279' from the EAST line and the bottom hole to be 1200' from the NORTH line and 535' from the WEST line as measured at right angles from the section lines of Section 36, Township 5 North, Range 65 West of the Sixth Principal Meridian, County of Weld, State of Colorado.

I hereby state that this Well Location Certificate was prepared by me, or under my direct supervision, that the fieldwork was completed on 8/31/11, for and on behalf of Noble Energy Inc. That this is not a Land Survey Plat or an Improvement Survey Plat, and that it is not to be relied upon for establishment of fence, building, or other future improvement lines.



NOTE:

- 1) Bearings shown are Grid Bearings of the Colorado State Plane Coordinate System, North Zone, North American Datum 1983/2007. The lined dimensions as contained herein are based upon the "U.S. Survey Foot."
- 2) Ground elevations are based on an observed GPS elevation (NAVD 1988 DATUM).
- 3) NEAREST EXISTING WELL: STATE FARM 36-6, 631'
- 4) IMPROVEMENTS: See LOCATION DRAWING for all visible improvements within 400' of disturbed area.
- 5) SURFACE USE: CROP FIELD, PIVOT CORNER
- 6) INSTRUMENT OPERATOR: KYLE RUTZ

NOTE

According to Colorado law, you must commence any legal action based upon any defect in this W.L.C. within three years after you discover such defect. In no event, may any action based upon any defect in this survey be commenced more than ten years after the date of the certificate shown hereon. (13-80-105 C.R.S.)

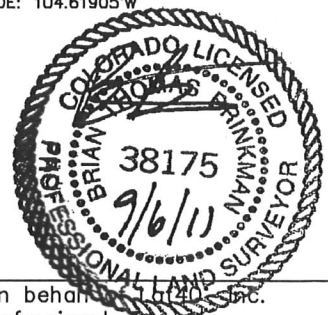
LEGEND

- = ALIQUOT MONUMENT AS DESCRIBED
- = CALCULATED POSITION

SURFACE LOCATION
LATITUDE: 40.35651°N
LONGITUDE: 104.60304°W
PDOP: 2.3
ELEV: 4770'
1/4, 1/4: SE1/4NE1/4

BOTTOM HOLE
LATITUDE: 40.35968°N
LONGITUDE: 104.61905°W
NEAREST PROPERTY LINE: 279' EAST

Brian T. Brinkman—On behalf of Lat40°, Inc.
Colorado Licensed Professional
Land Surveyor No. 38175
PROJECT#: 2011015

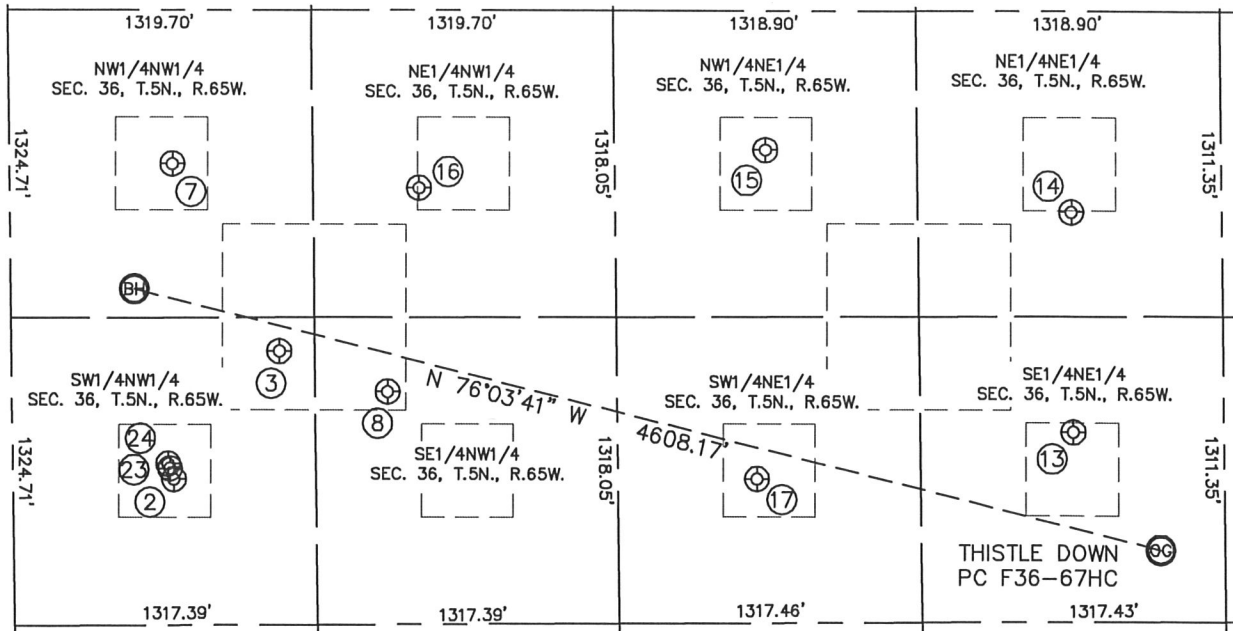


Lat40°, Inc. 1635 Foxtrail Drive, Suite 325 Loveland, CO 970-776-3321

SITE SKETCH

THISTLE DOWN PC F36-67HC

SECTION: 36
TOWNSHIP: 5N
RANGE: 65W



②

STATE EHRLICH 36-23Y
SW1/4NW1/4
2017' FNL
698' FWL
LAT-40.35743°N
LONG-104.61845°W
PDOP: 2.5
ELEV: 4702'

③

STATE EHRLICH 36-25
SW1/4NW1/4
1467' FNL
1165' FWL
LAT-40.35893°N
LONG-104.61678°W
PDOP: 1.7
ELEV: 4697'

⑦

STATE CLARK 36-22
NW1/4NW1/4
661' FNL
707' FWL
LAT-40.36115°N
LONG-104.61844°W
PDOP: 2.3
ELEV: 4690'

⑧

STATE 36-1
SE1/4NW1/4
1640' FNL
1635' FWL
LAT-40.35844°N
LONG-104.61509°W
PDOP: 1.7
ELEV: 4704'

⑬

STATE FARM 36-6
SE1/4NE1/4
1809' FNL
651' FEL
LAT-40.35791°N
LONG-104.60438°W
PDOP: 3.2
ELEV: 4765'

⑭

STATE FARMS 36-11
NE1/4NE1/4
864' FNL
651' FEL
LAT-40.36050°N
LONG-104.60438°W
PDOP: 1.2
ELEV: 4754'

⑮

DOMESTATE FARM 36-2
NW1/4NE1/4
598' FNL
1979' FEL
LAT-40.36126°N
LONG-104.60915°W
PDOP: 1.2
ELEV: 4731'

⑯

STATE CLARK 36-21
NE1/4NW1/4
764' FNL
1782' FWL
LAT-40.36084°N
LONG-104.61458°W
PDOP: 1.2
ELEV: 4708'

⑰

STATE FARM 36-7
SW1/4NE1/4
2012' FNL
2030' FEL
LAT-40.35738°N
LONG-104.60933°W
PDOP: 1.3
ELEV: 4730'

⑳

EHRLICH STATE PC
F36-32D
SW1/4NW1/4
1971' FNL
682' FWL
LAT-40.35756°N
LONG-104.61851°W
PDOP: 1.5
ELEV: 4702'

㉑

EHRLICH STATE PC
F36-31D
SW1/4NW1/4
1951' FNL
674' FWL
LAT-40.35761°N
LONG-104.61854°W
PDOP: 1.4
ELEV: 4701'

