

S 1/4 Cor. Sec. 32  
1970 Brass Cap, 0.2' High  
E-W Fenceline  
Lat: 39.651225°  
Long: 108.192233°

# T5S, R96W, 6th P.M.

SE Cor. Sec. 33  
1953 Brass Cap  
0.2' High, Pile  
of Stones, Fence  
Lat: 39.651322°  
Long: 108.164147°

SW Cor. Sec. 33  
1970 Brass Cap, 0.2' High  
Steel Post, Fenceline  
Lat: 39.651258°  
Long: 108.182847°

Sec. 33

S89°35'21"W - 2638.68' (Meas.)

C.C. 1917 Brass Cap  
0.5' High, Pile of Stones, Fence  
Lat: 39.651322°  
Long: 108.164839°

S89°37'21"W  
2643.75' (Meas.)  
True Position L2

S89°40'56"W - 2629.55' (Meas.)

PROPERTY LINE

LOT 3

T4S

S 1/4 Cor. Sec. 33  
1970 Brass Cap  
0.3' High, Fence Cor.  
Lat: 39.651286°  
Long: 108.173514°

LOT 2

LOT 1

N00°14'57"W  
2629.58' (Meas. To C.C.)  
N00°14'57"W  
2630.20' (Meas. To True)

NOTE:  
SEE SHEET 6A FOR EXISTING IMPROVEMENTS  
WITHIN 400' OF THE PROPOSED WELL  
DISTURBANCE.

1917 Brass Cap  
2.0' High  
Lat: 39.644039°  
Long: 108.183539°

1917 Brass Cap  
1.0' High, Pile  
of Stones  
Lat: 39.644039°  
Long: 108.164828°

N00°11'23"W  
2654.26' (Meas. To C.C.)  
N00°11'23"W  
2653.24' (Meas. To True)

N00°08'02"W - 2634.58' (Meas.)

NOTE:  
THE PROPOSED BOTTOM HOLE FOR THIS WELL  
IS LOCATED IN THE NW 1/4 NE 1/4 OF  
SECTION 9, T5S, R96W, 6th P.M. AT A  
DISTANCE OF 1230' FNL 1309' FEL. IT BEARS  
S24°29'38"E 3830.44' FROM THE PROPOSED  
WELL HEAD.

1917 Brass Cap  
2.5' High  
Lat: 39.636808°  
Long: 108.183536°

1917 Brass Cap  
2.3' High  
Lat: 39.636808°  
Long: 108.164797°

**N. PARACHUTE  
UWFO2E-09 K04 596**  
Elev. Graded Ground = 8199.0'

NOTE:  
THE PROPERTY LINE IS LOCATED NORTH 3014'  
FROM THE PROPOSED WELL HEAD.

S89°50'59"W 2640.58' (Meas.) S89°55'26"W - 2638.66' (Meas.)

1917 Brass Cap  
2.0' High  
Lat: 39.636814°  
Long: 108.174164°

**LEGEND:**

- └─┘ = 90° SYMBOL
- = PROPOSED WELL HEAD.
- ▲ = SECTION CORNERS LOCATED.
- △ = SECTION CORNERS RE-ESTABLISHED. (Not Set on Ground.)

## Encana OIL & GAS (USA) INC.

Well location, N. PARACHUTE UWFO2E-09 K04 596 (SURFACE LOCATION), located as shown in the NE 1/4 SW 1/4 of Section 4, T5S, R96W, 6th P.M., Garfield County, Colorado.

### BASIS OF ELEVATION

BENCH MARK (H79) LOCATED IN THE NE 1/4 OF SECTION 35, T4S, R98W, 6th P.M. TAKEN FROM THE BULL FORK QUADRANGLE, COLORADO, 7.5 MINUTE SERIES (TOPO GRAPHICAL MAP) PUBLISHED BY THE UNITED STATES DEPARTMENT OF THE INTERIOR, GEOLOGICAL SURVEY. SAID ELEVATION IS MARKED AS BEING 8535 FEET.

### BASIS OF BEARINGS

BASIS OF BEARINGS IS A G.P.S. OBSERVATION.

Sheet 1i of 9

LINE TABLE		
LINE	DIRECTION	LENGTH
L1	N89°35'21"E	195.03'
L2	S89°37'21"W	200.90'



### CERTIFICATE

THIS IS TO CERTIFY THAT THE ABOVE PLAT WAS PREPARED AND LOCATION AS SHOWN WAS STAKED ON THE GROUND FROM FIELD NOTES OF ACTUAL SURVEYS MADE BY ME OR UNDER MY SUPERVISION AND THAT THE SAME ARE TRUE AND CORRECT TO THE BEST OF MY KNOWLEDGE AND BELIEF.

*[Signature]*  
REGISTERED LAND SURVEYOR  
REGISTRATION NO. 17492  
STATE OF COLORADO  
04-20-12

**UINTAH ENGINEERING & LAND SURVEYING**  
85 SOUTH 200 EAST - VERNAL, UTAH 84078  
(435) 789-0917

PDOP = 1.2	SCALE 1" = 1000'	DATE SURVEYED: 04-11-12	DATE DRAWN: 04-17-12
NAD 83 (SURFACE LOCATION) LATITUDE = 39°38'34.84" (39.643011) LONGITUDE = 108°10'30.18" (108.175050)	PARTY B.B. C.C. M.D.	REFERENCES G.L.O. PLAT	
NAD 27 (SURFACE LOCATION) LATITUDE = 39°38'34.93" (39.643036) LONGITUDE = 108°10'27.89" (108.174414)	WEATHER COLD	FILE Encana OIL & GAS (USA) INC.	

# Encana OIL & GAS (USA) INC.

Well location, N. PARACHUTE UWF02E-09 K04 596 (TARGET BOTTOM HOLE), located as shown in the NE 1/4 NE 1/4 of Section 9, T5S, R96W, 6th P.M., Garfield County, Colorado.

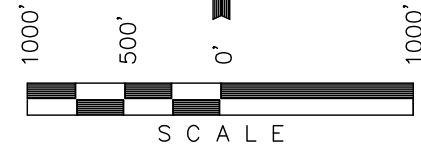
## BASIS OF ELEVATION

BENCH MARK (H79) LOCATED IN THE NE 1/4 OF SECTION 35, T4S, R98W, 6th P.M. TAKEN FROM THE BULL FORK QUADRANGLE, COLORADO, 7.5 MINUTE SERIES (TOPO GRAPHICAL MAP) PUBLISHED BY THE UNITED STATES DEPARTMENT OF THE INTERIOR, GEOLOGICAL SURVEY. SAID ELEVATION IS MARKED AS BEING 8535 FEET.

## BASIS OF BEARINGS

BASIS OF BEARINGS IS A G.P.S. OBSERVATION.

Sheet 1j of 9

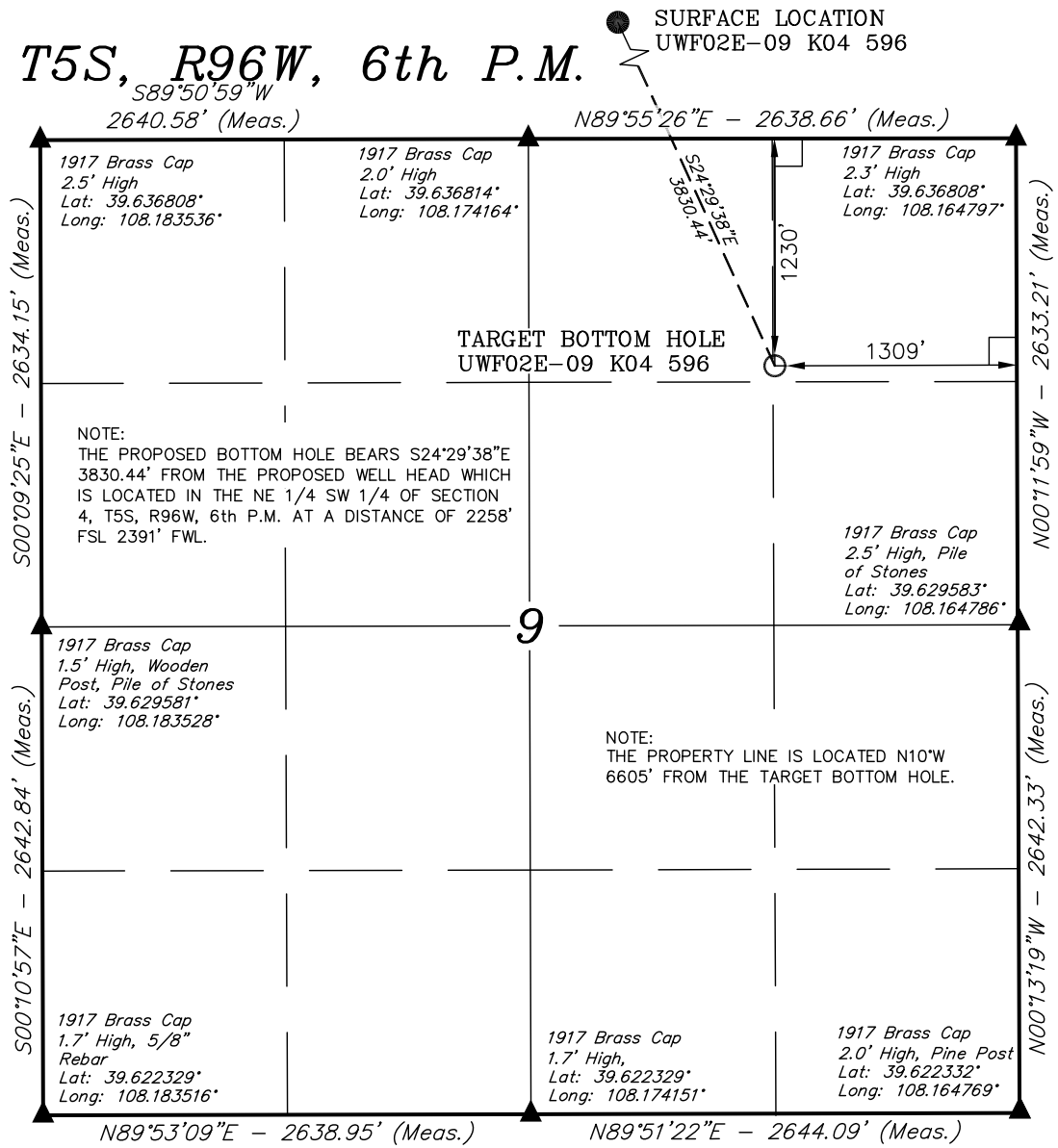


## CERTIFICATE

THIS IS TO CERTIFY THAT THE ABOVE PLAT WAS PREPARED AND LOCATION AS SHOWN WAS STAKED ON THE GROUND FROM FIELD NOTES OF ACTUAL SURVEYS MADE BY ME OR UNDER MY SUPERVISION AND THAT THE SAME ARE TRUE AND CORRECT TO THE BEST OF MY KNOWLEDGE AND BELIEF.

REGISTERED LAND SURVEYOR  
REGISTRATION NO. 17492  
STATE OF COLORADO  
04-20-12

# T5S, R96W, 6th P.M.



### LEGEND:

- = 90° SYMBOL
- = PROPOSED WELL HEAD.
- = SECTION CORNERS LOCATED.
- = SECTION CORNERS RE-ESTABLISHED. (Not Set on Ground.)

<b>NAD 83 (TARGET BOTTOM HOLE)</b>	
LATITUDE	= 39°38'00.37" (39.633436)
LONGITUDE	= 108°10'09.98" (108.169439)
<b>NAD 27 (TARGET BOTTOM HOLE)</b>	
LATITUDE	= 39°38'00.46" (39.633461)
LONGITUDE	= 108°10'07.69" (108.168803)

<b>UINTAH ENGINEERING &amp; LAND SURVEYING</b>		
85 SOUTH 200 EAST - VERNAL, UTAH 84078		
(435) 789-0917		
SCALE 1" = 1000'	DATE SURVEYED: 04-11-12	DATE DRAWN: 04-17-12
PARTY B.B. C.C. M.D.	REFERENCES G.L.O. PLAT	
WEATHER COLD	FILE Encana OIL & GAS (USA) INC.	