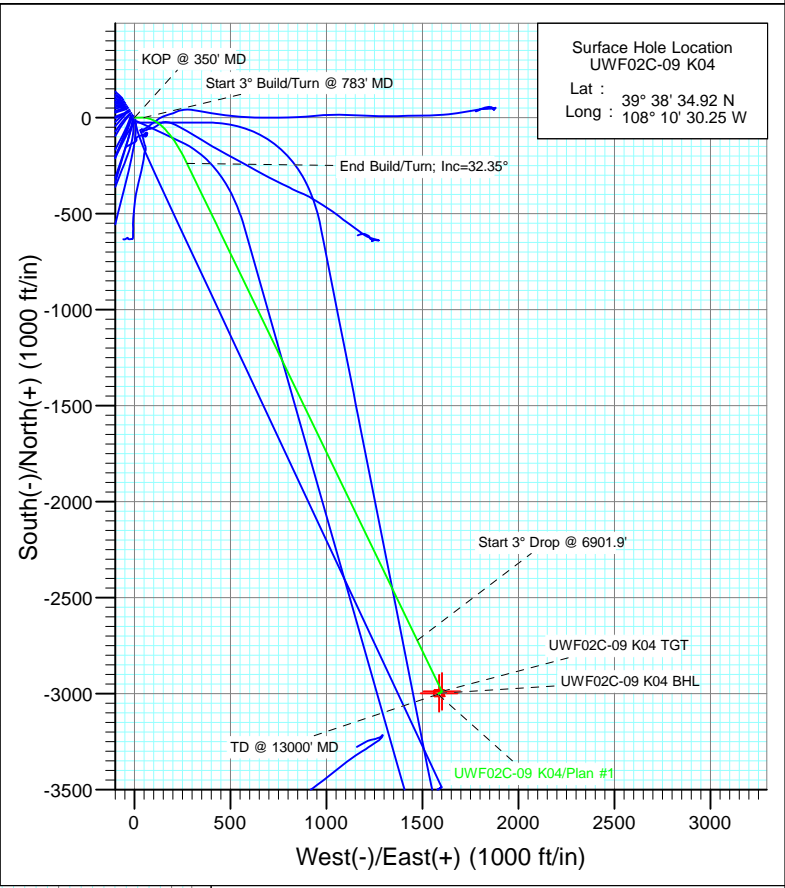


SECTION DETAILS

Sec	MD	Inc	Azi	TVD	+N-/S	+E-/W	Dleg	TFace	V Sect	Target
1	0.0	0.00	0.00	0.0	0.0	0.0	0.00	0.00	0.0	
2	350.0	0.00	0.00	350.0	0.0	0.0	0.00	0.00	0.0	
3	783.3	13.00	90.00	779.6	0.0	48.9	3.00	90.00	22.9	
4	1746.5	32.35	154.23	1674.8	-237.1	274.1	3.00	85.65	337.8	
5	6901.9	32.35	154.23	6030.1	-2721.1	1473.5	0.00	0.00	3094.3	
6	7980.1	0.00	0.00	7052.0	-2988.0	1602.4	3.00	180.00	3390.5	UWF02C-09 K04 TGT
7	8098.8	0.30	236.43	7170.7	-2988.2	1602.1	0.25	236.43	3390.5	
8	11521.2	0.30	236.43	10593.0	-2998.0	1587.4	0.00	0.00	3392.3	UWF02C-09 K04 BHL
9	13000.0	0.30	236.43	12071.8	-3002.2	1581.0	0.00	0.00	3393.0	



FORMATION TOP DETAILS

TVDPath	MDPath	Formation
965.0	974.1	A_GROOVE_TVD
1131.0	1146.7	B_GROOVE_TVD
1171.0	1188.8	B_GROOVE_BASE_TVD
1946.0	2067.6	GARDEN_GULCH_TVD

Azimuths to True North
 Magnetic North: 10.34°
 Magnetic Field
 Strength: 52205.3snT
 Dip Angle: 65.80°
 Date: 4/12/2012
 Model: IGRF2010

Plan #1
 UWF02C-09 K04
 KB @ 8226.0ft (Original Well Elev)
 North American Datum 1983
 Well UWF02C-09 K04, True North

Type Target	Target	Azimuth	Origin Type	N/S	E/W	From TVD
	UWF02C-09 K04 BHL	152.10	Slot	0.0	0.0	0.0
Name	TVD	+N-/S	+E-/W	Latitude	Longitude	
UWF02C-09 K04 TGT	7052.0	-2988.0	1602.4	39° 38' 5.39 N	108° 10' 9.77 W	
UWF02C-09 K04 BHL	10593.0	-2998.0	1587.4	39° 38' 5.29 N	108° 10' 9.96 W	

Planning Report

Database:	USA EDM 5000 Multi Users DB	Local Co-ordinate Reference:	Well UWF02C-09 K04
Company:	EnCana Oil & Gas (USA) Inc	TVD Reference:	KB @ 8226.0ft (Original Well Elev)
Project:	North Piceance	MD Reference:	KB @ 8226.0ft (Original Well Elev)
Site:	K04 Pad	North Reference:	True
Well:	UWF02C-09 K04	Survey Calculation Method:	Minimum Curvature
Wellbore:	DD		
Design:	Plan #1		

Project	North Piceance		
Map System:	US State Plane 1983	System Datum:	Mean Sea Level
Geo Datum:	North American Datum 1983		
Map Zone:	Colorado Central Zone		

Site	K04 Pad				
Site Position:		Northing:	1,636,938.27 ft	Latitude:	39° 33' 11.18 N
From:	Lat/Long	Easting:	2,263,572.45 ft	Longitude:	108° 6' 43.51 W
Position Uncertainty:	0.0 ft	Slot Radius:	13.200 in	Grid Convergence:	-1.65 °

Well	UWF02C-09 K04					
Well Position	+N/-S	0.0 ft	Northing:	1,670,197.25 ft	Latitude:	39° 38' 34.92 N
	+E/-W	0.0 ft	Easting:	2,246,784.53 ft	Longitude:	108° 10' 30.25 W
Position Uncertainty		0.0 ft	Wellhead Elevation:	ft	Ground Level:	8,193.0 ft

Wellbore	DD				
Magnetics	Model Name	Sample Date	Declination	Dip Angle	Field Strength
	IGRF2010	4/12/2012	(°)	(°)	(nT)
			10.34	65.80	52,205

Design	Plan #1			
Audit Notes:				
Version:	Phase:	PLAN	Tie On Depth:	0.0
Vertical Section:	Depth From (TVD)	+N/-S	+E/-W	Direction
	(ft)	(ft)	(ft)	(°)
	0.0	0.0	0.0	152.10

Plan Sections										
Measured Depth (ft)	Inclination (°)	Azimuth (°)	Vertical Depth (ft)	+N/-S (ft)	+E/-W (ft)	Dogleg Rate (°/100ft)	Build Rate (°/100ft)	Turn Rate (°/100ft)	TFO (°)	Target
0.0	0.00	0.00	0.0	0.0	0.0	0.00	0.00	0.00	0.00	
350.0	0.00	0.00	350.0	0.0	0.0	0.00	0.00	0.00	0.00	
783.3	13.00	90.00	779.6	0.0	48.9	3.00	3.00	0.00	90.00	
1,746.5	32.35	154.23	1,674.8	-237.1	274.1	3.00	2.01	6.67	85.65	
6,901.9	32.35	154.23	6,030.1	-2,721.1	1,473.5	0.00	0.00	0.00	0.00	
7,980.1	0.00	0.00	7,052.0	-2,988.0	1,602.4	3.00	-3.00	0.00	180.00	UWF02C-09 K04 TG1
8,098.8	0.30	236.43	7,170.7	-2,988.2	1,602.1	0.25	0.25	-104.13	236.43	
11,521.2	0.30	236.43	10,593.0	-2,998.0	1,587.4	0.00	0.00	0.00	0.00	UWF02C-09 K04 BHL
13,000.0	0.30	236.43	12,071.8	-3,002.2	1,581.0	0.00	0.00	0.00	0.00	

Planning Report

Database:	USA EDM 5000 Multi Users DB	Local Co-ordinate Reference:	Well UWF02C-09 K04
Company:	EnCana Oil & Gas (USA) Inc	TVD Reference:	KB @ 8226.0ft (Original Well Elev)
Project:	North Piceance	MD Reference:	KB @ 8226.0ft (Original Well Elev)
Site:	K04 Pad	North Reference:	True
Well:	UWF02C-09 K04	Survey Calculation Method:	Minimum Curvature
Wellbore:	DD		
Design:	Plan #1		

Planned Survey									
Measured Depth (ft)	Inclination (°)	Azimuth (°)	Vertical Depth (ft)	+N/-S (ft)	+E/-W (ft)	Vertical Section (ft)	Dogleg Rate (°/100ft)	Build Rate (°/100ft)	Comments / Formations
0.0	0.00	0.00	0.0	0.0	0.0	0.0	0.00	0.00	
100.0	0.00	0.00	100.0	0.0	0.0	0.0	0.00	0.00	
200.0	0.00	0.00	200.0	0.0	0.0	0.0	0.00	0.00	
300.0	0.00	0.00	300.0	0.0	0.0	0.0	0.00	0.00	
350.0	0.00	0.00	350.0	0.0	0.0	0.0	0.00	0.00	KOP @ 350' MD
400.0	1.50	90.00	400.0	0.0	0.7	0.3	3.00	3.00	
500.0	4.50	90.00	499.8	0.0	5.9	2.8	3.00	3.00	
600.0	7.50	90.00	599.3	0.0	16.3	7.6	3.00	3.00	
700.0	10.50	90.00	698.0	0.0	32.0	15.0	3.00	3.00	
783.3	13.00	90.00	779.6	0.0	48.9	22.9	3.00	3.00	Start 3° Build/Turn @ 783' MD
800.0	13.05	92.21	795.9	-0.1	52.7	24.7	3.00	0.28	
900.0	13.71	104.88	893.2	-3.6	75.4	38.4	3.00	0.66	
974.1	14.58	113.27	965.0	-9.5	92.5	51.7	3.00	1.17	A_GROOVE_TVD
1,000.0	14.94	115.96	990.1	-12.2	98.5	56.9	3.00	1.42	
1,100.0	16.63	125.11	1,086.3	-26.1	121.8	80.1	3.00	1.68	
1,146.7	17.53	128.76	1,131.0	-34.4	132.8	92.5	3.00	1.93	B_GROOVE_TVD
1,188.8	18.40	131.74	1,171.0	-42.8	142.6	104.5	3.00	2.06	B_GROOVE_BASE_TVD
1,200.0	18.63	132.49	1,181.6	-45.1	145.3	107.9	3.00	2.12	
1,300.0	20.87	138.41	1,275.7	-69.3	168.9	140.2	3.00	2.24	
1,400.0	23.28	143.19	1,368.4	-98.4	192.6	177.1	3.00	2.40	
1,500.0	25.80	147.10	1,459.4	-132.5	216.2	218.3	3.00	2.52	
1,600.0	28.41	150.35	1,548.4	-171.5	239.8	263.8	3.00	2.61	
1,700.0	31.09	153.09	1,635.2	-215.2	263.3	313.4	3.00	2.68	
1,746.5	32.35	154.23	1,674.8	-237.1	274.1	337.8	3.00	2.71	End Build/Turn; Inc=32.35°
1,800.0	32.35	154.23	1,720.0	-262.9	286.6	366.4	0.00	0.00	
1,900.0	32.35	154.23	1,804.5	-311.0	309.8	419.9	0.00	0.00	
2,000.0	32.35	154.23	1,888.9	-359.2	333.1	473.3	0.00	0.00	
2,067.6	32.35	154.23	1,946.0	-391.8	348.8	509.5	0.00	0.00	GARDEN_GULCH_TVD
2,100.0	32.35	154.23	1,973.4	-407.4	356.4	526.8	0.00	0.00	
2,200.0	32.35	154.23	2,057.9	-455.6	379.6	580.3	0.00	0.00	
2,300.0	32.35	154.23	2,142.4	-503.8	402.9	633.7	0.00	0.00	
2,400.0	32.35	154.23	2,226.9	-552.0	426.2	687.2	0.00	0.00	
2,500.0	32.35	154.23	2,311.3	-600.1	449.4	740.7	0.00	0.00	
2,600.0	32.35	154.23	2,395.8	-648.3	472.7	794.2	0.00	0.00	
2,700.0	32.35	154.23	2,480.3	-696.5	496.0	847.6	0.00	0.00	
2,800.0	32.35	154.23	2,564.8	-744.7	519.2	901.1	0.00	0.00	
2,900.0	32.35	154.23	2,649.3	-792.9	542.5	954.6	0.00	0.00	
3,000.0	32.35	154.23	2,733.7	-841.1	565.7	1,008.0	0.00	0.00	
3,100.0	32.35	154.23	2,818.2	-889.2	589.0	1,061.5	0.00	0.00	
3,200.0	32.35	154.23	2,902.7	-937.4	612.3	1,115.0	0.00	0.00	
3,300.0	32.35	154.23	2,987.2	-985.6	635.5	1,168.4	0.00	0.00	
3,309.2	32.35	154.23	2,995.0	-990.1	637.7	1,173.4	0.00	0.00	WASATCH_FM_TVD
3,400.0	32.35	154.23	3,071.7	-1,033.8	658.8	1,221.9	0.00	0.00	
3,500.0	32.35	154.23	3,156.2	-1,082.0	682.1	1,275.4	0.00	0.00	
3,600.0	32.35	154.23	3,240.6	-1,130.2	705.3	1,328.8	0.00	0.00	
3,700.0	32.35	154.23	3,325.1	-1,178.3	728.6	1,382.3	0.00	0.00	
3,800.0	32.35	154.23	3,409.6	-1,226.5	751.9	1,435.8	0.00	0.00	
3,900.0	32.35	154.23	3,494.1	-1,274.7	775.1	1,489.2	0.00	0.00	
4,000.0	32.35	154.23	3,578.6	-1,322.9	798.4	1,542.7	0.00	0.00	
4,100.0	32.35	154.23	3,663.0	-1,371.1	821.7	1,596.2	0.00	0.00	
4,200.0	32.35	154.23	3,747.5	-1,419.3	844.9	1,649.7	0.00	0.00	
4,300.0	32.35	154.23	3,832.0	-1,467.4	868.2	1,703.1	0.00	0.00	

Planning Report

Database:	USA EDM 5000 Multi Users DB	Local Co-ordinate Reference:	Well UWF02C-09 K04
Company:	EnCana Oil & Gas (USA) Inc	TVD Reference:	KB @ 8226.0ft (Original Well Elev)
Project:	North Piceance	MD Reference:	KB @ 8226.0ft (Original Well Elev)
Site:	K04 Pad	North Reference:	True
Well:	UWF02C-09 K04	Survey Calculation Method:	Minimum Curvature
Wellbore:	DD		
Design:	Plan #1		

Planned Survey									
Measured Depth (ft)	Inclination (°)	Azimuth (°)	Vertical Depth (ft)	+N/-S (ft)	+E/-W (ft)	Vertical Section (ft)	Dogleg Rate (°/100ft)	Build Rate (°/100ft)	Comments / Formations
4,400.0	32.35	154.23	3,916.5	-1,515.6	891.5	1,756.6	0.00	0.00	
4,500.0	32.35	154.23	4,001.0	-1,563.8	914.7	1,810.1	0.00	0.00	
4,600.0	32.35	154.23	4,085.4	-1,612.0	938.0	1,863.5	0.00	0.00	
4,700.0	32.35	154.23	4,169.9	-1,660.2	961.3	1,917.0	0.00	0.00	
4,800.0	32.35	154.23	4,254.4	-1,708.4	984.5	1,970.5	0.00	0.00	
4,900.0	32.35	154.23	4,338.9	-1,756.5	1,007.8	2,023.9	0.00	0.00	
5,000.0	32.35	154.23	4,423.4	-1,804.7	1,031.1	2,077.4	0.00	0.00	
5,100.0	32.35	154.23	4,507.9	-1,852.9	1,054.3	2,130.9	0.00	0.00	
5,200.0	32.35	154.23	4,592.3	-1,901.1	1,077.6	2,184.3	0.00	0.00	
5,300.0	32.35	154.23	4,676.8	-1,949.3	1,100.8	2,237.8	0.00	0.00	
5,400.0	32.35	154.23	4,761.3	-1,997.4	1,124.1	2,291.3	0.00	0.00	
5,500.0	32.35	154.23	4,845.8	-2,045.6	1,147.4	2,344.8	0.00	0.00	
5,600.0	32.35	154.23	4,930.3	-2,093.8	1,170.6	2,398.2	0.00	0.00	
5,700.0	32.35	154.23	5,014.7	-2,142.0	1,193.9	2,451.7	0.00	0.00	
5,747.6	32.35	154.23	5,055.0	-2,165.0	1,205.0	2,477.2	0.00	0.00	WASATCH_G_TVD
5,800.0	32.35	154.23	5,099.2	-2,190.2	1,217.2	2,505.2	0.00	0.00	
5,900.0	32.35	154.23	5,183.7	-2,238.4	1,240.4	2,558.6	0.00	0.00	
6,000.0	32.35	154.23	5,268.2	-2,286.5	1,263.7	2,612.1	0.00	0.00	
6,100.0	32.35	154.23	5,352.7	-2,334.7	1,287.0	2,665.6	0.00	0.00	
6,200.0	32.35	154.23	5,437.2	-2,382.9	1,310.2	2,719.0	0.00	0.00	
6,300.0	32.35	154.23	5,521.6	-2,431.1	1,333.5	2,772.5	0.00	0.00	
6,400.0	32.35	154.23	5,606.1	-2,479.3	1,356.8	2,826.0	0.00	0.00	
6,500.0	32.35	154.23	5,690.6	-2,527.5	1,380.0	2,879.4	0.00	0.00	
6,600.0	32.35	154.23	5,775.1	-2,575.6	1,403.3	2,932.9	0.00	0.00	
6,700.0	32.35	154.23	5,859.6	-2,623.8	1,426.6	2,986.4	0.00	0.00	
6,800.0	32.35	154.23	5,944.0	-2,672.0	1,449.8	3,039.8	0.00	0.00	
6,900.0	32.35	154.23	6,028.5	-2,720.2	1,473.1	3,093.3	0.00	0.00	
6,901.9	32.35	154.23	6,030.1	-2,721.1	1,473.5	3,094.3	0.00	0.00	Start 3° Drop @ 6901.9'
7,000.0	29.40	154.23	6,114.3	-2,766.4	1,495.4	3,144.6	3.00	-3.00	
7,100.0	26.40	154.23	6,202.7	-2,808.6	1,515.8	3,191.4	3.00	-3.00	
7,200.0	23.40	154.23	6,293.4	-2,846.5	1,534.1	3,233.5	3.00	-3.00	
7,300.0	20.40	154.23	6,386.1	-2,880.1	1,550.3	3,270.8	3.00	-3.00	
7,400.0	17.40	154.23	6,480.7	-2,909.3	1,564.4	3,303.1	3.00	-3.00	
7,500.0	14.40	154.23	6,576.9	-2,933.9	1,576.3	3,330.5	3.00	-3.00	
7,600.0	11.40	154.23	6,674.4	-2,954.0	1,586.0	3,352.8	3.00	-3.00	
7,700.0	8.40	154.23	6,772.9	-2,969.5	1,593.5	3,370.0	3.00	-3.00	
7,800.0	5.40	154.23	6,872.1	-2,980.4	1,598.7	3,382.0	3.00	-3.00	
7,900.0	2.40	154.23	6,971.9	-2,986.5	1,601.7	3,388.8	3.00	-3.00	
7,980.1	0.00	0.00	7,052.0	-2,988.0	1,602.4	3,390.5	3.00	-3.00	WILLIAMS_FORK_TVD - UWF02C-09 K04 TG'
8,000.0	0.05	236.43	7,071.9	-2,988.0	1,602.4	3,390.5	0.25	0.25	
8,098.8	0.30	236.43	7,170.7	-2,988.2	1,602.1	3,390.5	0.25	0.25	
8,100.0	0.30	236.43	7,171.9	-2,988.2	1,602.1	3,390.5	0.00	0.00	
8,200.0	0.30	236.43	7,271.9	-2,988.5	1,601.7	3,390.6	0.00	0.00	
8,300.0	0.30	236.43	7,371.9	-2,988.7	1,601.3	3,390.6	0.00	0.00	
8,400.0	0.30	236.43	7,471.9	-2,989.0	1,600.8	3,390.7	0.00	0.00	
8,500.0	0.30	236.43	7,571.8	-2,989.3	1,600.4	3,390.7	0.00	0.00	
8,600.0	0.30	236.43	7,671.8	-2,989.6	1,600.0	3,390.8	0.00	0.00	
8,700.0	0.30	236.43	7,771.8	-2,989.9	1,599.6	3,390.8	0.00	0.00	
8,800.0	0.30	236.43	7,871.8	-2,990.2	1,599.1	3,390.9	0.00	0.00	
8,900.0	0.30	236.43	7,971.8	-2,990.5	1,598.7	3,390.9	0.00	0.00	
9,000.0	0.30	236.43	8,071.8	-2,990.8	1,598.3	3,391.0	0.00	0.00	
9,100.0	0.30	236.43	8,171.8	-2,991.0	1,597.8	3,391.0	0.00	0.00	

Planning Report

Database:	USA EDM 5000 Multi Users DB	Local Co-ordinate Reference:	Well UWF02C-09 K04
Company:	EnCana Oil & Gas (USA) Inc	TVD Reference:	KB @ 8226.0ft (Original Well Elev)
Project:	North Piceance	MD Reference:	KB @ 8226.0ft (Original Well Elev)
Site:	K04 Pad	North Reference:	True
Well:	UWF02C-09 K04	Survey Calculation Method:	Minimum Curvature
Wellbore:	DD		
Design:	Plan #1		

Planned Survey									
Measured Depth (ft)	Inclination (°)	Azimuth (°)	Vertical Depth (ft)	+N/-S (ft)	+E/-W (ft)	Vertical Section (ft)	Dogleg Rate (°/100ft)	Build Rate (°/100ft)	Comments / Formations
9,200.0	0.30	236.43	8,271.8	-2,991.3	1,597.4	3,391.1	0.00	0.00	
9,300.0	0.30	236.43	8,371.8	-2,991.6	1,597.0	3,391.1	0.00	0.00	
9,400.0	0.30	236.43	8,471.8	-2,991.9	1,596.5	3,391.2	0.00	0.00	
9,500.0	0.30	236.43	8,571.8	-2,992.2	1,596.1	3,391.3	0.00	0.00	
9,600.0	0.30	236.43	8,671.8	-2,992.5	1,595.7	3,391.3	0.00	0.00	
9,700.0	0.30	236.43	8,771.8	-2,992.8	1,595.2	3,391.4	0.00	0.00	
9,800.0	0.30	236.43	8,871.8	-2,993.0	1,594.8	3,391.4	0.00	0.00	
9,900.0	0.30	236.43	8,971.8	-2,993.3	1,594.4	3,391.5	0.00	0.00	
10,000.0	0.30	236.43	9,071.8	-2,993.6	1,593.9	3,391.5	0.00	0.00	
10,100.0	0.30	236.43	9,171.8	-2,993.9	1,593.5	3,391.6	0.00	0.00	
10,200.0	0.30	236.43	9,271.8	-2,994.2	1,593.1	3,391.6	0.00	0.00	
10,300.0	0.30	236.43	9,371.8	-2,994.5	1,592.6	3,391.7	0.00	0.00	
10,400.0	0.30	236.43	9,471.8	-2,994.8	1,592.2	3,391.7	0.00	0.00	
10,500.0	0.30	236.43	9,571.8	-2,995.0	1,591.8	3,391.8	0.00	0.00	
10,600.0	0.30	236.43	9,671.8	-2,995.3	1,591.4	3,391.8	0.00	0.00	
10,700.0	0.30	236.43	9,771.8	-2,995.6	1,590.9	3,391.9	0.00	0.00	
10,800.0	0.30	236.43	9,871.8	-2,995.9	1,590.5	3,391.9	0.00	0.00	
10,900.0	0.30	236.43	9,971.8	-2,996.2	1,590.1	3,392.0	0.00	0.00	
11,000.0	0.30	236.43	10,071.8	-2,996.5	1,589.6	3,392.0	0.00	0.00	
11,100.0	0.30	236.43	10,171.8	-2,996.8	1,589.2	3,392.1	0.00	0.00	
11,200.0	0.30	236.43	10,271.8	-2,997.0	1,588.8	3,392.1	0.00	0.00	
11,300.0	0.30	236.43	10,371.8	-2,997.3	1,588.3	3,392.2	0.00	0.00	
11,400.0	0.30	236.43	10,471.8	-2,997.6	1,587.9	3,392.2	0.00	0.00	
11,500.0	0.30	236.43	10,571.8	-2,997.9	1,587.5	3,392.3	0.00	0.00	
11,521.2	0.30	236.43	10,593.0	-2,998.0	1,587.4	3,392.3	0.00	0.00	ROLLINS_TVD - UWF02C-09 K04 BHL
11,600.0	0.30	236.43	10,671.8	-2,998.2	1,587.0	3,392.3	0.00	0.00	
11,700.0	0.30	236.43	10,771.8	-2,998.5	1,586.6	3,392.4	0.00	0.00	
11,800.0	0.30	236.43	10,871.8	-2,998.8	1,586.2	3,392.4	0.00	0.00	
11,812.2	0.30	236.43	10,884.0	-2,998.8	1,586.1	3,392.4	0.00	0.00	COZZETTE_TVD
11,900.0	0.30	236.43	10,971.8	-2,999.1	1,585.7	3,392.5	0.00	0.00	
11,985.2	0.30	236.43	11,057.0	-2,999.3	1,585.4	3,392.5	0.00	0.00	CORCORAN_TVD
12,000.0	0.30	236.43	11,071.8	-2,999.3	1,585.3	3,392.5	0.00	0.00	
12,100.0	0.30	236.43	11,171.8	-2,999.6	1,584.9	3,392.6	0.00	0.00	
12,200.0	0.30	236.43	11,271.8	-2,999.9	1,584.5	3,392.6	0.00	0.00	
12,271.2	0.30	236.43	11,343.0	-3,000.1	1,584.1	3,392.7	0.00	0.00	UPPER_SEGO_TVD
12,300.0	0.30	236.43	11,371.8	-3,000.2	1,584.0	3,392.7	0.00	0.00	
12,400.0	0.30	236.43	11,471.8	-3,000.5	1,583.6	3,392.7	0.00	0.00	
12,500.0	0.30	236.43	11,571.8	-3,000.8	1,583.2	3,392.8	0.00	0.00	
12,600.0	0.30	236.43	11,671.8	-3,001.1	1,582.7	3,392.8	0.00	0.00	
12,700.0	0.30	236.43	11,771.8	-3,001.3	1,582.3	3,392.9	0.00	0.00	
12,800.0	0.30	236.43	11,871.8	-3,001.6	1,581.9	3,392.9	0.00	0.00	
12,900.0	0.30	236.43	11,971.8	-3,001.9	1,581.4	3,393.0	0.00	0.00	
13,000.0	0.30	236.43	12,071.8	-3,002.2	1,581.0	3,393.0	0.00	0.00	TD @ 13000' MD

Planning Report

Database:	USA EDM 5000 Multi Users DB	Local Co-ordinate Reference:	Well UWF02C-09 K04
Company:	EnCana Oil & Gas (USA) Inc	TVD Reference:	KB @ 8226.0ft (Original Well Elev)
Project:	North Piceance	MD Reference:	KB @ 8226.0ft (Original Well Elev)
Site:	K04 Pad	North Reference:	True
Well:	UWF02C-09 K04	Survey Calculation Method:	Minimum Curvature
Wellbore:	DD		
Design:	Plan #1		

Targets									
Target Name	Dip Angle	Dip Dir.	TVD	+N/-S	+E/-W	Northing	Easting	Latitude	Longitude
- hit/miss target	(°)	(°)	(ft)	(ft)	(ft)	(ft)	(ft)		
- Shape									
UWF02C-09 K04 BHL - plan hits target center - Rectangle (sides W30.0 H50.0 D0.0)	0.00	358.32	10,593.0	-2,998.0	1,587.4	1,667,153.85	2,248,282.96	39° 38' 5.29 N	108° 10' 9.96 W
UWF02C-09 K04 TGT - plan hits target center - Point	0.00	358.32	7,052.0	-2,988.0	1,602.4	1,667,163.37	2,248,298.26	39° 38' 5.39 N	108° 10' 9.77 W

Formations						
Measured Depth	Vertical Depth	Name	Lithology	Dip	Dip Direction	
(ft)	(ft)			(°)	(°)	
974.1	965.0	A_GROOVE_TVD				
1,146.7	1,131.0	B_GROOVE_TVD				
1,188.8	1,171.0	B_GROOVE_BASE_TVD				
2,067.6	1,946.0	GARDEN_GULCH_TVD				
3,309.2	2,995.0	WASATCH_FM_TVD				
5,747.6	5,055.0	WASATCH_G_TVD				
7,980.1	7,052.0	WILLIAMS_FORK_TVD				
11,521.2	10,593.0	ROLLINS_TVD				
11,812.2	10,884.0	COZZETTE_TVD				
11,985.2	11,057.0	CORCORAN_TVD				
12,271.2	11,343.0	UPPER_SEGO_TVD				

Plan Annotations					
Measured Depth	Vertical Depth	Local Coordinates		Comment	
(ft)	(ft)	+N/-S	+E/-W		
		(ft)	(ft)		
350.0	350.0	0.0	0.0	KOP @ 350' MD	
783.3	779.6	0.0	48.9	Start 3° Build/Turn @ 783' MD	
1,746.5	1,674.8	-237.1	274.1	End Build/Turn; Inc=32.35°	
6,901.9	6,030.1	-2,721.1	1,473.5	Start 3° Drop @ 6901.9'	
13,000.0	12,071.8	-3,002.2	1,581.0	TD @ 13000' MD	