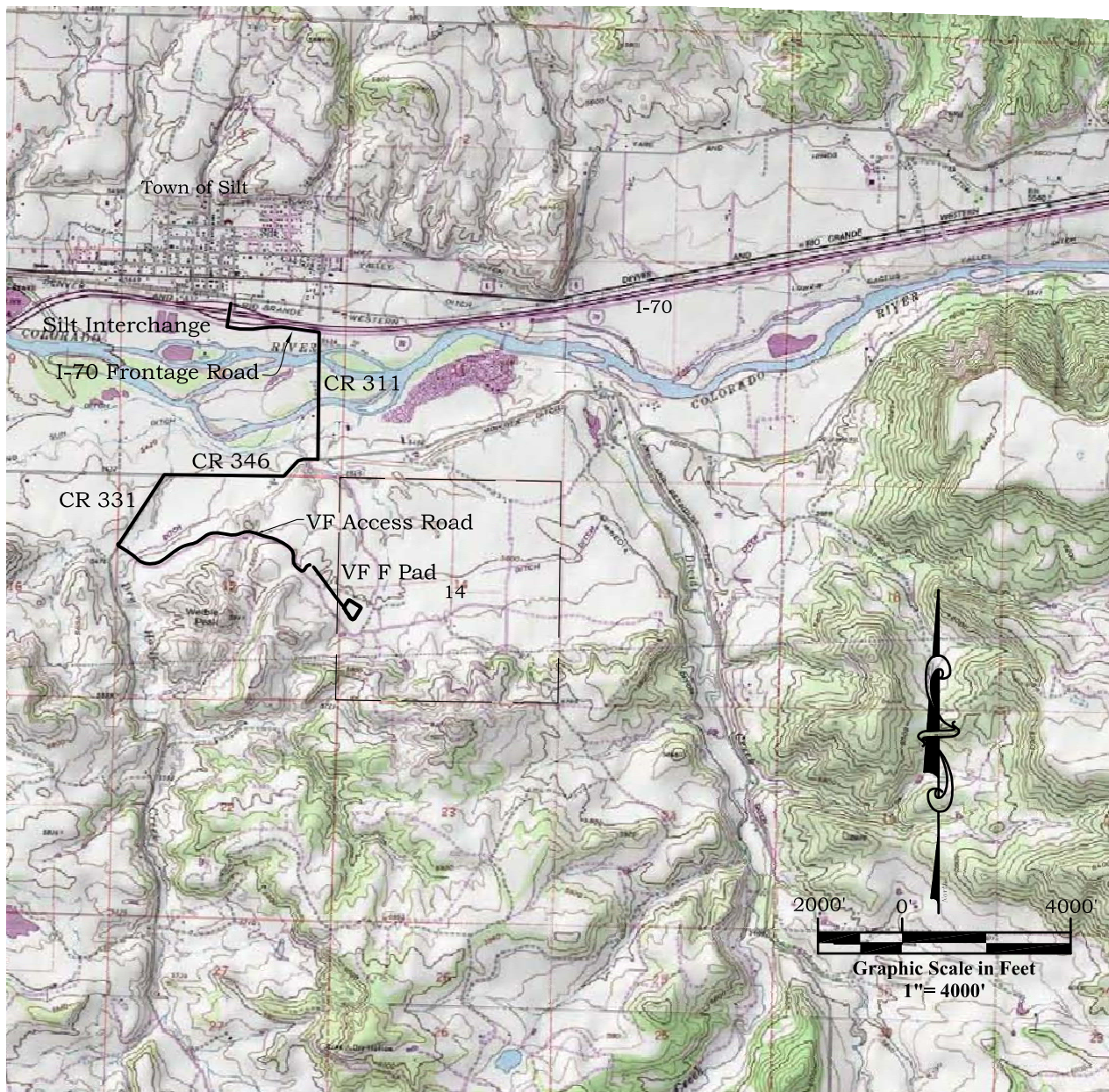


# Location Map

## Valley Farms F Pad Pad

### Section 14, Township 6 South, Range 92 West



#### ACCESS:

FROM I-70 SILT EXIT 97 PROCEED SOUTHERLY ALONG HIGHWAY OVERPASS 0.1 MILES TO THE FRONTAGE ROAD. TURN LEFT AND PROCEED EAST ALONG FRONTAGE ROAD 0.42 MILES TO STILLWATER BLVD. TURN RIGHT AND PROCEED SOUTH ALONG STILLWATER BLVD 0.57 MILES TO COUNTY ROAD 346. TURN RIGHT AND PROCEED WEST ALONG COUNTY ROAD 346 0.73 MILES TO THE INTERSECTION WITH COUNTY ROAD 331. TURN LEFT ONTO COUNTY ROAD 331 AND PROCEED SOUTHERLY 0.45 MILES TO THE VALLEY FARMS ACCESS ROAD. TURN LEFT AND PROCEED 1.76 MILES TO THE VALLEY FARMS F PAD.



**River Valley Survey, Inc.**  
110 East 3rd. Street, Suite 213  
Rifle, Colorado 81650  
Ph: 970-379-7846

Project: Valley Farms F Pad Expansion

Field Date: 03-22-12

Date: 4/9/12

Scale: 1" = 4000'

Sheet: 9 of 9

Pad Expansion Plat  
Prepared For Antero Resources

Situate In:  
NW 1/4 Section 14, T.6S., R. 92 W. of  
the 6th P.M., Garfield County,  
Colorado

