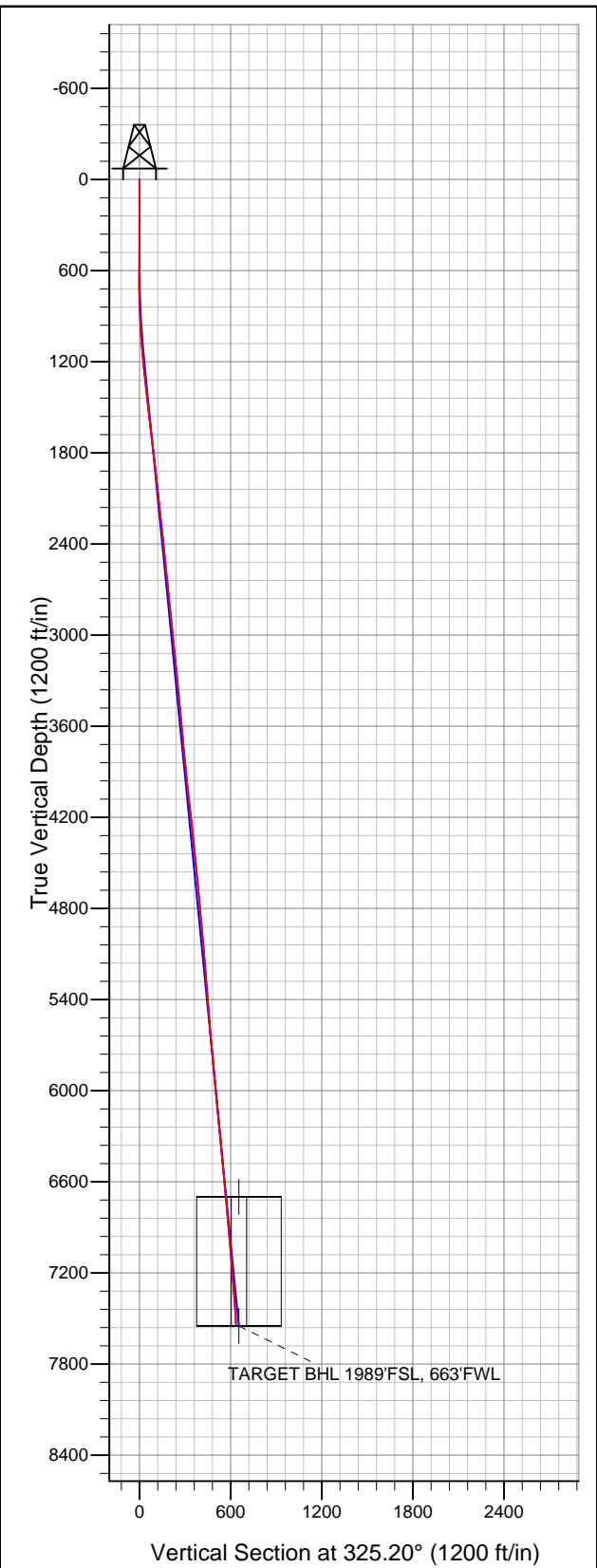


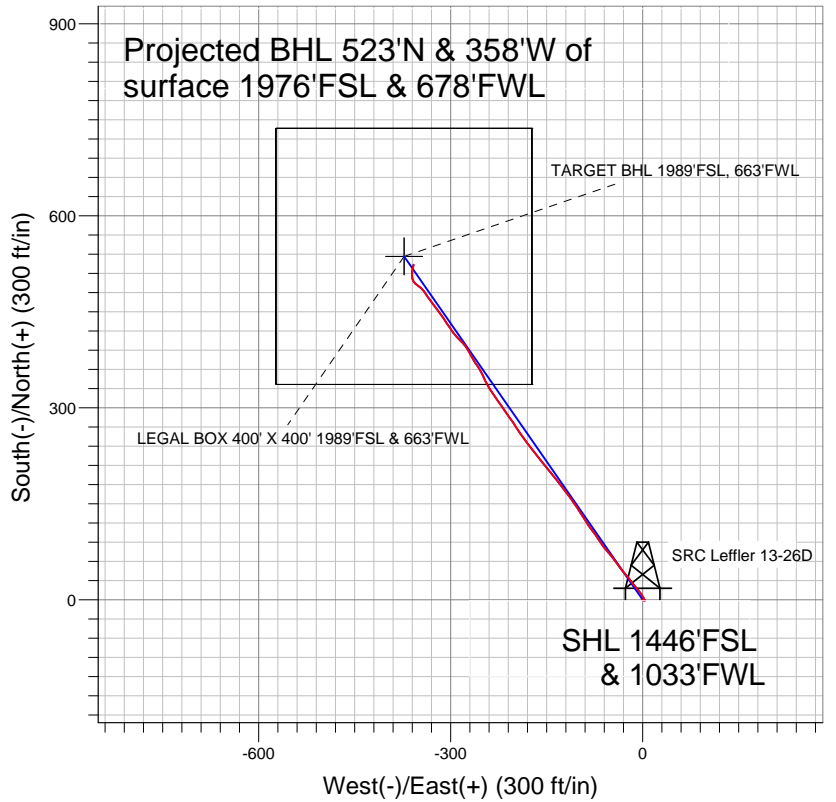


Well Name: SRC Leffler 13-26D

Surface Location: SRC Leffler 13-26D Pad Sec.26-T7N-R66W
North American Datum 1983 US State Plane 1983 Colorado Northern Zone
Ground Elevation: 4870.0
+N/-S +E/-W Northing Easting Latitude Longitude Slot
0.0 0.0 1441457.01 3208306.94 40.542783 -104.750480
Original Well Elev WELL @ 4883.0ft (Original Well Elev)



Synergy Resources



LEGEND

- SRC Leffler 13-26D, Wellbore #1, Plan #2 (11-10-11) V0
- Wellbore #1
- Survey #1

Final Survey Plot

Projected Final Survey -
7568'MD & 7537'TVD @ 634'VS
4.2 deg Inc 14.3 deg AZ

Project: SEC.26-T7N-R66W
Site: SRC Leffler 13-26D Pad Sec.26-T7N-R66W
Well: SRC Leffler 13-26D
Plan: Wellbore #1



Synergy Resources

SEC.26-T7N-R66W

SRC Leffler 13-26D Pad Sec.26-T7N-R66W

SRC Leffler 13-26D

Wellbore #1

Survey: Survey #1

Standard Survey Report

28 November, 2011

Company:	Synergy Resources	Local Co-ordinate Reference:	Well SRC Leffler 13-26D
Project:	SEC.26-T7N-R66W	TVD Reference:	WELL @ 4883.0ft (Original Well Elev)
Site:	SRC Leffler 13-26D Pad Sec.26-T7N-R66W	MD Reference:	WELL @ 4883.0ft (Original Well Elev)
Well:	SRC Leffler 13-26D	North Reference:	True
Wellbore:	Wellbore #1	Survey Calculation Method:	Minimum Curvature
Design:	Wellbore #1	Database:	Landmark

Project	SEC.26-T7N-R66W, Weld County, Colorado		
Map System:	US State Plane 1983	System Datum:	Mean Sea Level
Geo Datum:	North American Datum 1983		Using Well Reference Point
Map Zone:	Colorado Northern Zone		Using geodetic scale factor

Site	SRC Leffler 13-26D Pad Sec.26-T7N-R66W				
Site Position:		Northing:	1,441,456.48ft	Latitude:	40.542782
From:	Lat/Long	Easting:	3,208,286.93ft	Longitude:	-104.750552
Position Uncertainty:	0.0 ft	Slot Radius:	"	Grid Convergence:	0.48 °

Well	SRC Leffler 13-26D					
Well Position	+N/-S	0.0 ft	Northing:	1,441,457.01 ft	Latitude:	40.542783
	+E/-W	0.0 ft	Easting:	3,208,306.94 ft	Longitude:	-104.750480
Position Uncertainty		0.0 ft	Wellhead Elevation:	ft	Ground Level:	4,870.0 ft

Wellbore	Wellbore #1				
Magnetics	Model Name	Sample Date	Declination (°)	Dip Angle (°)	Field Strength (nT)
	IGRF2010	10/14/2011	8.83	67.16	53,172

Design	Wellbore #1				
Audit Notes:					
Version:	1.0	Phase:	ACTUAL	Tie On Depth:	0.0
Vertical Section:	Depth From (TVD) (ft)	+N/-S (ft)	+E/-W (ft)	Direction (°)	
	7,550.0	0.0	0.0	325.20	

Survey Program		Date	11/28/2011		
From (ft)	To (ft)	Survey (Wellbore)	Tool Name	Description	
88.0	7,568.0	Survey #1 (Wellbore #1)	MWD	MWD - Standard	

Survey									
Measured Depth (ft)	Inclination (°)	Azimuth (°)	Vertical Depth (ft)	+N/-S (ft)	+E/-W (ft)	Vertical Section (ft)	Dogleg Rate (°/100ft)	Build Rate (°/100ft)	Turn Rate (°/100ft)
0.0	0.00	0.00	0.0	0.0	0.0	0.0	0.00	0.00	0.00
88.0	0.20	229.90	88.0	-0.1	-0.1	0.0	0.23	0.23	0.00
178.0	0.30	147.10	178.0	-0.4	-0.1	-0.3	0.38	0.11	-92.00
269.0	0.40	129.00	269.0	-0.8	0.3	-0.8	0.16	0.11	-19.89
360.0	0.40	110.20	360.0	-1.1	0.8	-1.4	0.14	0.00	-20.66
456.0	0.50	88.40	456.0	-1.2	1.5	-1.9	0.20	0.10	-22.71
547.0	0.40	109.00	547.0	-1.3	2.2	-2.4	0.21	-0.11	22.64
609.0	0.70	108.00	609.0	-1.5	2.8	-2.8	0.48	0.48	-1.61
703.0	0.50	343.30	703.0	-1.3	3.2	-2.9	1.14	-0.21	-132.66
796.0	1.60	342.80	796.0	0.4	2.7	-1.3	1.18	1.18	-0.54
890.0	2.40	326.80	889.9	3.3	1.3	1.9	1.03	0.85	-17.02
984.0	3.60	327.90	983.8	7.4	-1.4	6.9	1.28	1.28	1.17
1,077.0	4.30	321.50	1,076.6	12.6	-5.1	13.3	0.89	0.75	-6.88

Company:	Synergy Resources	Local Co-ordinate Reference:	Well SRC Leffler 13-26D
Project:	SEC.26-T7N-R66W	TVD Reference:	WELL @ 4883.0ft (Original Well Elev)
Site:	SRC Leffler 13-26D Pad Sec.26-T7N-R66W	MD Reference:	WELL @ 4883.0ft (Original Well Elev)
Well:	SRC Leffler 13-26D	North Reference:	True
Wellbore:	Wellbore #1	Survey Calculation Method:	Minimum Curvature
Design:	Wellbore #1	Database:	Landmark

Survey										
Measured Depth (ft)	Inclination (°)	Azimuth (°)	Vertical Depth (ft)	+N/-S (ft)	+E/-W (ft)	Vertical Section (ft)	Dogleg Rate (°/100ft)	Build Rate (°/100ft)	Turn Rate (°/100ft)	
1,171.0	5.40	319.90	1,170.2	18.7	-10.1	21.2	1.18	1.17	-1.70	
1,265.0	6.00	323.30	1,263.8	26.1	-15.9	30.5	0.73	0.64	3.62	
1,359.0	6.10	320.80	1,357.2	33.9	-22.0	40.4	0.30	0.11	-2.66	
1,452.0	6.20	318.90	1,449.7	41.5	-28.4	50.3	0.24	0.11	-2.04	
1,546.0	6.60	323.30	1,543.1	49.6	-35.0	60.7	0.67	0.43	4.68	
1,639.0	7.00	323.10	1,635.5	58.5	-41.6	71.8	0.43	0.43	-0.22	
1,733.0	6.60	321.70	1,728.8	67.3	-48.4	82.9	0.46	-0.43	-1.49	
1,827.0	6.40	319.10	1,822.2	75.5	-55.2	93.5	0.38	-0.21	-2.77	
1,921.0	6.40	323.30	1,915.6	83.6	-61.7	103.9	0.50	0.00	4.47	
2,014.0	6.20	326.60	2,008.0	92.0	-67.6	114.1	0.44	-0.22	3.55	
2,108.0	6.10	326.10	2,101.5	100.4	-73.2	124.2	0.12	-0.11	-0.53	
2,202.0	6.20	321.30	2,195.0	108.5	-79.1	134.2	0.56	0.11	-5.11	
2,295.0	6.30	325.60	2,287.4	116.6	-85.2	144.4	0.51	0.11	4.62	
2,389.0	6.50	329.80	2,380.8	125.5	-90.7	154.8	0.54	0.21	4.47	
2,483.0	6.10	326.10	2,474.3	134.2	-96.2	165.1	0.61	-0.43	-3.94	
2,577.0	5.50	326.60	2,567.8	142.1	-101.5	174.6	0.64	-0.64	0.53	
2,670.0	5.80	324.50	2,660.3	149.7	-106.7	183.8	0.39	0.32	-2.26	
2,764.0	5.70	324.20	2,753.9	157.3	-112.1	193.2	0.11	-0.11	-0.32	
2,858.0	5.80	325.00	2,847.4	165.0	-117.6	202.6	0.14	0.11	0.85	
2,951.0	6.10	323.30	2,939.9	172.8	-123.2	212.2	0.37	0.32	-1.83	
3,045.0	6.20	322.90	3,033.3	180.9	-129.3	222.3	0.12	0.11	-0.43	
3,139.0	5.50	320.80	3,126.8	188.4	-135.2	231.9	0.78	-0.74	-2.23	
3,232.0	5.70	318.20	3,219.4	195.3	-141.1	240.9	0.35	0.22	-2.80	
3,326.0	5.40	323.30	3,313.0	202.3	-146.9	249.9	0.61	-0.32	5.43	
3,419.0	4.90	324.00	3,405.6	209.0	-151.8	258.3	0.54	-0.54	0.75	
3,513.0	4.80	317.00	3,499.3	215.2	-156.8	266.2	0.64	-0.11	-7.45	
3,607.0	5.50	320.50	3,592.9	221.5	-162.4	274.6	0.82	0.74	3.72	
3,700.0	5.80	319.80	3,685.4	228.5	-168.3	283.7	0.33	0.32	-0.75	
3,794.0	5.60	321.50	3,779.0	235.8	-174.2	293.0	0.28	-0.21	1.81	
3,888.0	5.50	327.30	3,872.5	243.1	-179.5	302.1	0.61	-0.11	6.17	
3,981.0	6.20	324.70	3,965.0	251.0	-184.8	311.6	0.80	0.75	-2.80	
4,075.0	6.30	324.20	4,058.5	259.3	-190.7	321.8	0.12	0.11	-0.53	
4,169.0	6.90	326.60	4,151.8	268.2	-196.9	332.6	0.70	0.64	2.55	
4,262.0	6.60	326.10	4,244.2	277.3	-202.9	343.5	0.33	-0.32	-0.54	
4,356.0	5.30	322.20	4,337.7	285.2	-208.6	353.3	1.45	-1.38	-4.15	
4,450.0	5.40	328.20	4,431.3	292.4	-213.6	362.0	0.60	0.11	6.38	
4,543.0	5.50	324.20	4,523.9	299.8	-218.5	370.8	0.42	0.11	-4.30	
4,637.0	5.50	324.90	4,617.4	307.1	-223.7	379.8	0.07	0.00	0.74	
4,731.0	5.90	325.40	4,711.0	314.8	-229.1	389.2	0.43	0.43	0.53	
4,824.0	5.50	325.60	4,803.5	322.4	-234.3	398.4	0.43	-0.43	0.22	
4,918.0	4.40	326.10	4,897.2	329.1	-238.8	406.5	1.17	-1.17	0.53	
5,012.0	4.70	331.50	4,990.9	335.5	-242.7	414.0	0.56	0.32	5.74	
5,106.0	5.00	337.70	5,084.5	342.6	-246.1	421.8	0.64	0.32	6.60	
5,199.0	5.50	334.50	5,177.1	350.4	-249.5	430.1	0.62	0.54	-3.44	
5,293.0	4.90	328.20	5,270.7	357.9	-253.6	438.6	0.88	-0.64	-6.70	
5,387.0	4.50	324.70	5,364.4	364.3	-257.8	446.3	0.52	-0.43	-3.72	
5,480.0	4.20	328.60	5,457.2	370.2	-261.7	453.3	0.45	-0.32	4.19	
5,574.0	4.30	330.00	5,550.9	376.2	-265.3	460.3	0.15	0.11	1.49	
5,668.0	5.20	329.40	5,644.6	382.9	-269.2	468.1	0.96	0.96	-0.64	
5,762.0	5.60	332.20	5,738.2	390.6	-273.5	476.9	0.51	0.43	2.98	
5,855.0	4.90	319.40	5,830.8	397.6	-278.2	485.3	1.46	-0.75	-13.76	
5,949.0	5.50	315.40	5,924.4	403.9	-284.0	493.7	0.75	0.64	-4.26	
6,043.0	5.50	316.30	6,018.0	410.4	-290.3	502.6	0.09	0.00	0.96	
6,137.0	5.50	322.80	6,111.5	417.2	-296.1	511.6	0.66	0.00	6.91	

Company: Synergy Resources
Project: SEC.26-T7N-R66W
Site: SRC Leffler 13-26D Pad Sec.26-T7N-R66W
Well: SRC Leffler 13-26D
Wellbore: Wellbore #1
Design: Wellbore #1

Local Co-ordinate Reference: Well SRC Leffler 13-26D
TVD Reference: WELL @ 4883.0ft (Original Well Elev)
MD Reference: WELL @ 4883.0ft (Original Well Elev)
North Reference: True
Survey Calculation Method: Minimum Curvature
Database: Landmark

Survey

Measured Depth (ft)	Inclination (°)	Azimuth (°)	Vertical Depth (ft)	+N-S (ft)	+E-W (ft)	Vertical Section (ft)	Dogleg Rate (°/100ft)	Build Rate (°/100ft)	Turn Rate (°/100ft)
6,230.0	5.70	325.90	6,204.1	424.6	-301.4	520.7	0.39	0.22	3.33
6,324.0	5.80	328.40	6,297.6	432.5	-306.5	530.1	0.29	0.11	2.66
6,418.0	5.50	324.20	6,391.2	440.2	-311.6	539.3	0.54	-0.32	-4.47
6,511.0	5.40	324.70	6,483.7	447.4	-316.8	548.1	0.12	-0.11	0.54
6,605.0	4.80	324.20	6,577.4	454.2	-321.6	556.5	0.64	-0.64	-0.53
6,699.0	5.20	321.20	6,671.0	460.7	-326.6	564.7	0.51	0.43	-3.19
6,736.0	5.24	321.20	6,707.8	463.3	-328.7	568.0	0.11	0.11	0.00
LEGAL BOX 400' X 400' 1989'FSL & 663'FWL									
6,793.0	5.30	321.20	6,764.6	467.4	-332.0	573.3	0.11	0.11	0.00
6,886.0	5.10	329.30	6,857.2	474.3	-336.8	581.7	0.82	-0.22	8.71
6,980.0	5.20	322.60	6,950.8	481.3	-341.5	590.1	0.65	0.11	-7.13
7,074.0	4.70	312.90	7,044.5	487.3	-346.9	598.1	1.04	-0.53	-10.32
7,168.0	4.40	303.60	7,138.2	491.9	-352.7	605.2	0.85	-0.32	-9.89
7,261.0	4.80	325.40	7,230.9	497.1	-357.9	612.4	1.92	0.43	23.44
7,355.0	6.00	356.90	7,324.5	505.2	-360.4	620.5	3.35	1.28	33.51
7,449.0	5.10	8.30	7,418.1	514.3	-360.1	627.8	1.51	-0.96	12.13
7,524.0	4.20	14.30	7,492.8	520.2	-358.9	632.0	1.36	-1.20	8.00
7,568.0	4.20	14.30	7,536.7	523.3	-358.1	634.1	0.00	0.00	0.00
TARGET BHL 1989'FSL, 663'FWL									

Checked By: _____ Approved By: _____ Date: _____