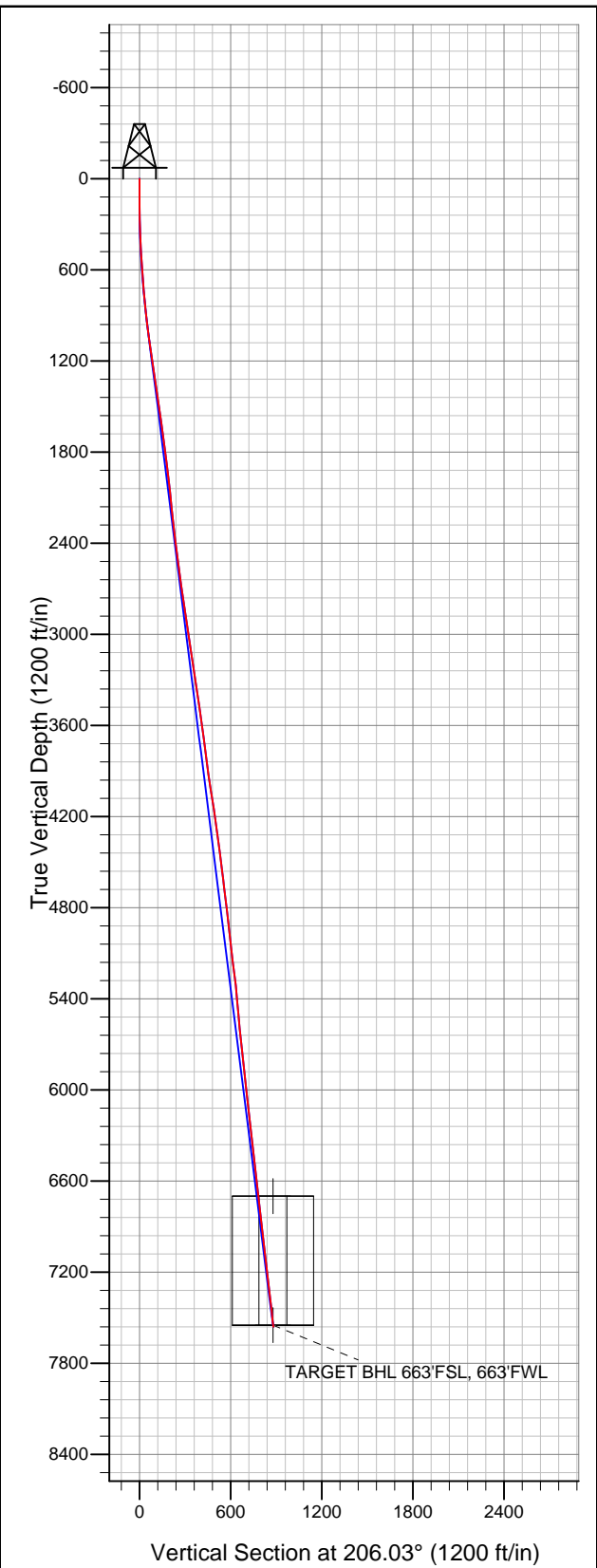


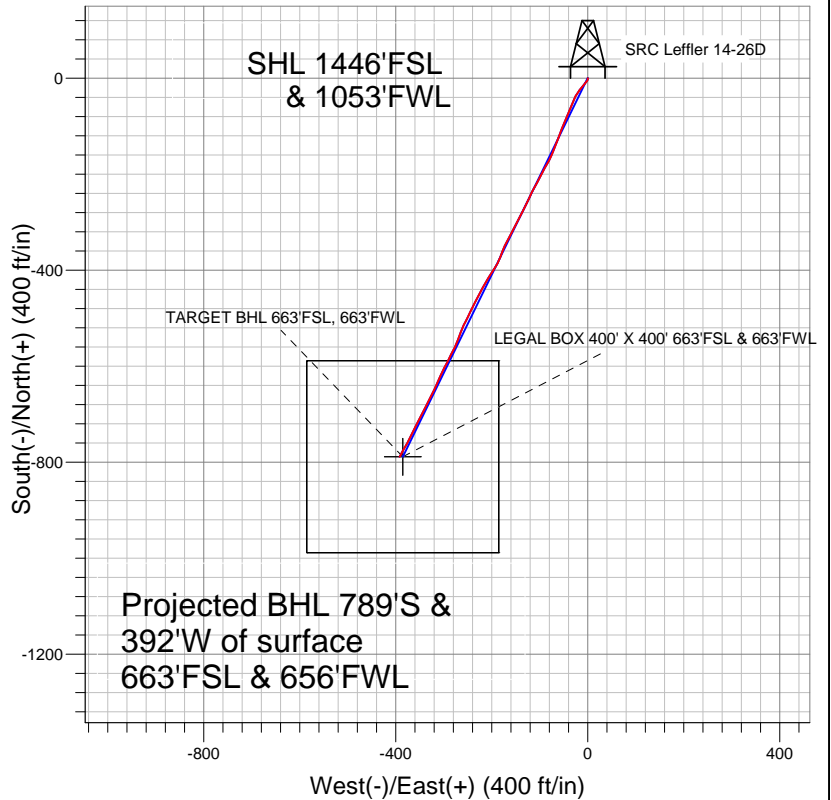


Well Name: SRC Leffler 14-26D

Surface Location: SRC Leffler 13-26D Pad Sec.26-T7N-R66W
North American Datum 1983 US State Plane 1983 Colorado Northern Zone
Ground Elevation: 4871.0
+N/-S +E/-W Northing Easting Latitude Longitude Slot
0.0 0.0 1441457.16 3208326.95 40.542783 -104.750408
Original Well Elev WELL @ 4884.0ft (Original Well Elev)



Synergy Resources



LEGEND

- SRC Leffler 14-26D, Wellbore #1, Plan #3 (11-10-11) V0
- Wellbore #1
- Survey #1

Final Survey Plot

Projected Final Survey -
7616'MD & 7561'TVD @ 880'VS
6.0 deg Inc 208.7 deg AZ

Project: SEC.26-T7N-R66W
Site: SRC Leffler 13-26D Pad Sec.26-T7N-R66W
Well: SRC Leffler 14-26D
Plan: Wellbore #1



Synergy Resources

SEC.26-T7N-R66W

SRC Leffler 13-26D Pad Sec.26-T7N-R66W

SRC Leffler 14-26D

Wellbore #1

Survey: Survey #1

Standard Survey Report

21 November, 2011

| Survey | Wellbore Data | | | | | | | | | |
|-------------|---------------------|-----------------|-------------|---------------------|------------|------------|-----------------------|-----------------------|----------------------|---------------------|
| | Measured Depth (ft) | Inclination (°) | Azimuth (°) | Vertical Depth (ft) | +N/-S (ft) | +E/-W (ft) | Vertical Section (ft) | Dogleg Rate (°/100ft) | Build Rate (°/100ft) | Turn Rate (°/100ft) |
| Main Survey | 0.0 | 0.00 | 0.00 | 0.0 | 0.0 | 0.0 | 0.0 | 0.00 | 0.00 | 0.00 |
| | 88.0 | 0.30 | 113.00 | 88.0 | -0.1 | 0.2 | 0.0 | 0.34 | 0.34 | 0.00 |
| | 178.0 | 0.60 | 156.80 | 178.0 | -0.6 | 0.6 | 0.3 | 0.48 | 0.33 | 48.67 |
| | 269.0 | 1.10 | 193.90 | 269.0 | -1.9 | 0.6 | 1.4 | 0.79 | 0.55 | 40.77 |
| | 360.0 | 1.70 | 208.10 | 360.0 | -3.9 | -0.3 | 3.7 | 0.76 | 0.66 | 15.60 |
| | 424.0 | 3.00 | 221.20 | 423.9 | -6.0 | -1.8 | 6.2 | 2.18 | 2.03 | 20.47 |
| | 482.0 | 3.60 | 221.00 | 481.8 | -8.6 | -4.0 | 9.4 | 1.03 | 1.03 | -0.34 |
| | 578.0 | 3.70 | 219.20 | 577.6 | -13.2 | -7.9 | 15.4 | 0.16 | 0.10 | -1.88 |
| | 671.0 | 4.50 | 218.50 | 670.4 | -18.4 | -12.1 | 21.9 | 0.86 | 0.86 | -0.75 |
| | 765.0 | 5.10 | 216.40 | 764.0 | -24.7 | -16.9 | 29.6 | 0.67 | 0.64 | -2.23 |
| | 859.0 | 6.00 | 212.20 | 857.6 | -32.2 | -22.0 | 38.6 | 1.05 | 0.96 | -4.47 |
| | 952.0 | 6.80 | 206.20 | 950.0 | -41.2 | -27.0 | 48.9 | 1.12 | 0.86 | -6.45 |
| | 1,046.0 | 7.70 | 201.30 | 1,043.3 | -52.1 | -31.7 | 60.7 | 1.16 | 0.96 | -5.21 |

| | | | |
|------------------|--|-------------------------------------|--------------------------------------|
| Company: | Synergy Resources | Local Co-ordinate Reference: | Well SRC Leffler 14-26D |
| Project: | SEC.26-T7N-R66W | TVD Reference: | WELL @ 4884.0ft (Original Well Elev) |
| Site: | SRC Leffler 13-26D Pad Sec.26-T7N-R66W | MD Reference: | WELL @ 4884.0ft (Original Well Elev) |
| Well: | SRC Leffler 14-26D | North Reference: | True |
| Wellbore: | Wellbore #1 | Survey Calculation Method: | Minimum Curvature |
| Design: | Wellbore #1 | Database: | Landmark |

Survey

| Measured Depth (ft) | Inclination (°) | Azimuth (°) | Vertical Depth (ft) | +N/-S (ft) | +E/-W (ft) | Vertical Section (ft) | Dogleg Rate (°/100ft) | Build Rate (°/100ft) | Turn Rate (°/100ft) |
|---------------------|-----------------|-------------|---------------------|------------|------------|-----------------------|-----------------------|----------------------|---------------------|
| 1,140.0 | 8.30 | 201.30 | 1,136.4 | -64.3 | -36.5 | 73.8 | 0.64 | 0.64 | 0.00 |
| 1,233.0 | 8.50 | 205.00 | 1,228.4 | -76.8 | -41.8 | 87.3 | 0.62 | 0.22 | 3.98 |
| 1,327.0 | 8.30 | 203.20 | 1,321.4 | -89.3 | -47.4 | 101.1 | 0.35 | -0.21 | -1.91 |
| 1,421.0 | 8.10 | 200.60 | 1,414.4 | -101.7 | -52.4 | 114.4 | 0.45 | -0.21 | -2.77 |
| 1,515.0 | 8.10 | 200.80 | 1,507.5 | -114.1 | -57.1 | 127.6 | 0.03 | 0.00 | 0.21 |
| 1,608.0 | 8.30 | 201.30 | 1,599.5 | -126.5 | -61.9 | 140.8 | 0.23 | 0.22 | 0.54 |
| 1,702.0 | 8.20 | 201.10 | 1,692.5 | -139.1 | -66.8 | 154.3 | 0.11 | -0.11 | -0.21 |
| 1,796.0 | 7.40 | 204.50 | 1,785.7 | -150.8 | -71.7 | 167.0 | 0.98 | -0.85 | 3.62 |
| 1,889.0 | 6.70 | 200.80 | 1,878.0 | -161.4 | -76.1 | 178.4 | 0.90 | -0.75 | -3.98 |
| 1,983.0 | 6.50 | 206.60 | 1,971.3 | -171.2 | -80.4 | 189.2 | 0.74 | -0.21 | 6.17 |
| 2,077.0 | 6.40 | 212.20 | 2,064.7 | -180.4 | -85.6 | 199.7 | 0.68 | -0.11 | 5.96 |
| 2,171.0 | 6.80 | 209.70 | 2,158.1 | -189.7 | -91.2 | 210.5 | 0.52 | 0.43 | -2.66 |
| 2,264.0 | 6.10 | 204.30 | 2,250.5 | -199.0 | -95.9 | 220.9 | 1.00 | -0.75 | -5.81 |
| 2,358.0 | 6.60 | 207.40 | 2,344.0 | -208.3 | -100.5 | 231.3 | 0.64 | 0.53 | 3.30 |
| 2,452.0 | 6.60 | 209.60 | 2,437.3 | -217.8 | -105.6 | 242.1 | 0.27 | 0.00 | 2.34 |
| 2,545.0 | 6.70 | 208.50 | 2,529.7 | -227.2 | -110.8 | 252.8 | 0.17 | 0.11 | -1.18 |
| 2,639.0 | 7.80 | 205.30 | 2,623.0 | -237.8 | -116.2 | 264.7 | 1.25 | 1.17 | -3.40 |
| 2,733.0 | 8.40 | 204.80 | 2,716.0 | -249.8 | -121.8 | 277.9 | 0.64 | 0.64 | -0.53 |
| 2,826.0 | 8.40 | 207.60 | 2,808.0 | -262.0 | -127.8 | 291.5 | 0.44 | 0.00 | 3.01 |
| 2,920.0 | 9.10 | 205.70 | 2,900.9 | -274.8 | -134.2 | 305.8 | 0.81 | 0.74 | -2.02 |
| 3,014.0 | 9.60 | 207.10 | 2,993.7 | -288.5 | -141.0 | 321.1 | 0.58 | 0.53 | 1.49 |
| 3,107.0 | 8.20 | 206.70 | 3,085.6 | -301.3 | -147.5 | 335.5 | 1.51 | -1.51 | -0.43 |
| 3,201.0 | 8.20 | 210.10 | 3,178.6 | -313.1 | -153.9 | 348.9 | 0.52 | 0.00 | 3.62 |
| 3,295.0 | 8.40 | 207.60 | 3,271.6 | -325.0 | -160.4 | 362.4 | 0.44 | 0.21 | -2.66 |
| 3,388.0 | 8.20 | 208.30 | 3,363.6 | -336.8 | -166.7 | 375.8 | 0.24 | -0.22 | 0.75 |
| 3,482.0 | 8.30 | 204.60 | 3,456.7 | -348.9 | -172.7 | 389.3 | 0.57 | 0.11 | -3.94 |
| 3,575.0 | 8.10 | 200.20 | 3,548.7 | -361.2 | -177.8 | 402.5 | 0.71 | -0.22 | -4.73 |
| 3,669.0 | 8.20 | 201.10 | 3,641.8 | -373.6 | -182.5 | 415.8 | 0.17 | 0.11 | 0.96 |
| 3,763.0 | 6.90 | 208.10 | 3,734.9 | -384.9 | -187.5 | 428.1 | 1.69 | -1.38 | 7.45 |
| 3,856.0 | 7.40 | 212.20 | 3,827.2 | -394.9 | -193.4 | 439.7 | 0.77 | 0.54 | 4.41 |
| 3,950.0 | 8.40 | 213.10 | 3,920.3 | -405.7 | -200.3 | 452.5 | 1.07 | 1.06 | 0.96 |
| 4,044.0 | 9.10 | 212.00 | 4,013.2 | -417.8 | -208.0 | 466.7 | 0.77 | 0.74 | -1.17 |
| 4,137.0 | 9.10 | 207.80 | 4,105.1 | -430.5 | -215.4 | 481.4 | 0.71 | 0.00 | -4.52 |
| 4,231.0 | 8.70 | 208.50 | 4,197.9 | -443.4 | -222.2 | 495.9 | 0.44 | -0.43 | 0.74 |
| 4,325.0 | 7.60 | 208.70 | 4,291.0 | -455.1 | -228.6 | 509.2 | 1.17 | -1.17 | 0.21 |
| 4,418.0 | 7.00 | 206.20 | 4,383.2 | -465.5 | -234.0 | 521.0 | 0.73 | -0.65 | -2.69 |
| 4,512.0 | 6.90 | 206.70 | 4,476.5 | -475.7 | -239.1 | 532.4 | 0.12 | -0.11 | 0.53 |
| 4,606.0 | 7.70 | 205.20 | 4,569.8 | -486.5 | -244.3 | 544.3 | 0.87 | 0.85 | -1.60 |
| 4,699.0 | 6.70 | 205.70 | 4,662.0 | -497.0 | -249.3 | 556.0 | 1.08 | -1.08 | 0.54 |
| 4,793.0 | 7.00 | 206.40 | 4,755.4 | -507.1 | -254.3 | 567.2 | 0.33 | 0.32 | 0.74 |
| 4,887.0 | 6.50 | 208.50 | 4,848.7 | -516.9 | -259.3 | 578.2 | 0.59 | -0.53 | 2.23 |
| 4,981.0 | 6.30 | 198.30 | 4,942.1 | -526.4 | -263.5 | 588.7 | 1.23 | -0.21 | -10.85 |
| 5,074.0 | 6.60 | 199.20 | 5,034.5 | -536.3 | -266.9 | 599.0 | 0.34 | 0.32 | 0.97 |
| 5,168.0 | 7.00 | 203.40 | 5,127.9 | -546.7 | -270.9 | 610.1 | 0.68 | 0.43 | 4.47 |
| 5,262.0 | 7.50 | 203.20 | 5,221.1 | -557.6 | -275.6 | 622.0 | 0.53 | 0.53 | -0.21 |
| 5,355.0 | 6.00 | 207.30 | 5,313.5 | -567.5 | -280.2 | 632.9 | 1.69 | -1.61 | 4.41 |
| 5,449.0 | 5.30 | 208.50 | 5,407.0 | -575.7 | -284.6 | 642.1 | 0.76 | -0.74 | 1.28 |
| 5,543.0 | 5.10 | 206.00 | 5,500.6 | -583.2 | -288.5 | 650.7 | 0.32 | -0.21 | -2.66 |
| 5,637.0 | 4.90 | 206.20 | 5,594.3 | -590.6 | -292.1 | 658.9 | 0.21 | -0.21 | 0.21 |
| 5,730.0 | 6.00 | 208.00 | 5,686.9 | -598.4 | -296.1 | 667.7 | 1.20 | 1.18 | 1.94 |
| 5,824.0 | 6.20 | 208.30 | 5,780.3 | -607.3 | -300.8 | 677.7 | 0.22 | 0.21 | 0.32 |
| 5,918.0 | 6.20 | 203.60 | 5,873.8 | -616.4 | -305.2 | 687.8 | 0.54 | 0.00 | -5.00 |
| 6,011.0 | 6.50 | 203.20 | 5,966.2 | -625.8 | -309.3 | 698.1 | 0.33 | 0.32 | -0.43 |
| 6,105.0 | 6.80 | 203.00 | 6,059.6 | -635.8 | -313.6 | 709.0 | 0.32 | 0.32 | -0.21 |

| | | | |
|------------------|--|-------------------------------------|--------------------------------------|
| Company: | Synergy Resources | Local Co-ordinate Reference: | Well SRC Leffler 14-26D |
| Project: | SEC.26-T7N-R66W | TVD Reference: | WELL @ 4884.0ft (Original Well Elev) |
| Site: | SRC Leffler 13-26D Pad Sec.26-T7N-R66W | MD Reference: | WELL @ 4884.0ft (Original Well Elev) |
| Well: | SRC Leffler 14-26D | North Reference: | True |
| Wellbore: | Wellbore #1 | Survey Calculation Method: | Minimum Curvature |
| Design: | Wellbore #1 | Database: | Landmark |

| Survey | | | | | | | | | | |
|--|-----------------|-------------|---------------------|------------|------------|-----------------------|-----------------------|----------------------|---------------------|--|
| Measured Depth (ft) | Inclination (°) | Azimuth (°) | Vertical Depth (ft) | +N/-S (ft) | +E/-W (ft) | Vertical Section (ft) | Dogleg Rate (°/100ft) | Build Rate (°/100ft) | Turn Rate (°/100ft) | |
| 6,199.0 | 6.90 | 204.80 | 6,152.9 | -646.1 | -318.1 | 720.2 | 0.25 | 0.11 | 1.91 | |
| 6,293.0 | 6.40 | 208.80 | 6,246.3 | -655.8 | -323.0 | 731.0 | 0.72 | -0.53 | 4.26 | |
| 6,387.0 | 6.50 | 205.70 | 6,339.7 | -665.2 | -327.9 | 741.6 | 0.39 | 0.11 | -3.30 | |
| 6,480.0 | 6.20 | 206.40 | 6,432.1 | -674.4 | -332.4 | 751.9 | 0.33 | -0.32 | 0.75 | |
| 6,574.0 | 6.80 | 206.00 | 6,525.5 | -684.0 | -337.1 | 762.5 | 0.64 | 0.64 | -0.43 | |
| 6,668.0 | 6.20 | 208.10 | 6,618.9 | -693.4 | -341.9 | 773.2 | 0.69 | -0.64 | 2.23 | |
| 6,759.5 | 5.71 | 205.58 | 6,709.9 | -701.9 | -346.2 | 782.6 | 0.60 | -0.53 | -2.76 | |
| LEGAL BOX 400' X 400' 663'FSL & 663'FWL | | | | | | | | | | |
| 6,762.0 | 5.70 | 205.50 | 6,712.4 | -702.1 | -346.3 | 782.9 | 0.60 | -0.53 | -3.00 | |
| 6,855.0 | 6.20 | 206.70 | 6,804.9 | -710.8 | -350.6 | 792.5 | 0.55 | 0.54 | 1.29 | |
| 6,949.0 | 7.00 | 211.80 | 6,898.3 | -720.2 | -355.9 | 803.3 | 1.05 | 0.85 | 5.43 | |
| 7,043.0 | 6.40 | 206.40 | 6,991.6 | -729.8 | -361.2 | 814.2 | 0.92 | -0.64 | -5.74 | |
| 7,137.0 | 6.60 | 202.00 | 7,085.0 | -739.5 | -365.6 | 824.9 | 0.57 | 0.21 | -4.68 | |
| 7,230.0 | 7.40 | 205.20 | 7,177.3 | -749.8 | -370.1 | 836.2 | 0.96 | 0.86 | 3.44 | |
| 7,324.0 | 7.10 | 211.70 | 7,270.6 | -760.3 | -375.7 | 848.0 | 0.93 | -0.32 | 6.91 | |
| 7,418.0 | 6.50 | 210.80 | 7,363.9 | -769.8 | -381.5 | 859.1 | 0.65 | -0.64 | -0.96 | |
| 7,511.0 | 6.20 | 206.90 | 7,456.4 | -778.8 | -386.5 | 869.4 | 0.56 | -0.32 | -4.19 | |
| 7,574.0 | 6.00 | 208.70 | 7,519.0 | -784.7 | -389.6 | 876.1 | 0.44 | -0.32 | 2.86 | |
| 7,605.0 | 6.00 | 208.70 | 7,549.8 | -787.5 | -391.2 | 879.3 | 0.00 | 0.00 | 0.00 | |
| TARGET BHL 663'FSL, 663'FWL | | | | | | | | | | |
| 7,616.0 | 6.00 | 208.70 | 7,560.8 | -788.5 | -391.7 | 880.5 | 0.00 | 0.00 | 0.00 | |

| | | |
|-------------------|--------------------|-------------|
| Checked By: _____ | Approved By: _____ | Date: _____ |
|-------------------|--------------------|-------------|