

**CHEVRON - MID-CONTINENT EBIZ
11111 S WILCREST DR - DO NOT MAIL
HOUSTON, Texas**

SKR
SKR 598-36-BV-22

H&P 316/H&P/316

Post Job Summary

Cement Production Casing

Prepared for:
Date Prepared:
Version: 1

Service Supervisor: FEUERBORN, JOHN

Submitted by:

HALLIBURTON

The Road to Excellence Starts with Safety

Sold To #: 338668	Ship To #: 2695503	Quote #:	Sales Order #: 6551070
Customer: CHEVRON - MID-CONTINENT EBIZ	Customer Rep: DOHERTY, ED		
Well Name: SKR	Well #: 598-36-BV-22	API/UWI #: 05-045-16929	
Field: PICEANCE	City (SAP): PARACHUTE	County/Parish: Garfield	State: Colorado
Lat: N 39.567 deg. OR N 39 deg. 33 min. 59.648 secs.	Long: W 108.347 deg. OR W -109 deg. 39 min. 12.499 secs.		
Contractor: H&P 316	Rig/Platform Name/Num: H&P 316		
Job Purpose: Cement Production Casing			
Well Type: Development Well	Job Type: Cement Production Casing		
Sales Person: DUNNING, DUSTIN	Srvc Supervisor: FEUERBORN, JOHN	MBU ID Emp #: 381677	

Job Personnel

HES Emp Name	Exp Hrs	Emp #	HES Emp Name	Exp Hrs	Emp #	HES Emp Name	Exp Hrs	Emp #
ARNOLD, EDWARD John	5	439784	BLANCHETTE, JAMES George	5	371360	BRANDON, BRADLEY Vernon	5	353157
DUBOIS, ISAAC	5	56690	FEUERBORN, JOHN William	5	381677	HANSEN, TED Lance	5	396847
SAUTER, MARK A	5	410526	WEAVER, CARLTON Russell	5	457698			

Equipment

HES Unit #	Distance-1 way	HES Unit #	Distance-1 way	HES Unit #	Distance-1 way	HES Unit #	Distance-1 way
10719771	120 mile	10857016	120 mile	10867425	120 mile	10872113	120 mile
10897891	120 mile	10951251	120 mile				

Job Hours

Date	On Location Hours	Operating Hours	Date	On Location Hours	Operating Hours	Date	On Location Hours	Operating Hours

TOTAL Total is the sum of each column separately

Job

Job Times

Formation Name	Formation Depth (MD) Top	Bottom	Form Type	Job depth MD	Job Depth TVD	Water Depth	Perforation Depth (MD) From	To	Called Out	Date	Time	Time Zone
			BHST	6625. ft	6576. ft				16 - Mar - 2009	12:00		CST
									16 - Mar - 2009	16:00		CST
									16 - Mar - 2009	20:41		CST
									16 - Mar - 2009	22:02		CST

Well Data

Description	New / Used	Max pressure psig	Size in	ID in	Weight lbm/ft	Thread	Grade	Top MD ft	Bottom MD ft	Top TVD ft	Bottom TVD ft
-------------	------------	-------------------	---------	-------	---------------	--------	-------	-----------	--------------	------------	---------------

Sales/Rental/3rd Party (HES)

Description	Qty	Qty uom	Depth	Supplier
PLUG,CMTG,TOP,4 1/2,HWE,3.65 MIN/4.14 MA	1	EA		
PORT. DAS W/CEMWIN;ACQUIRE W/HES, ZI	1	JOB		
ADC (AUTO DENSITY CTRL) SYS, /JOB,ZI	1	JOB		

Tools and Accessories

Type	Size	Qty	Make	Depth	Type	Size	Qty	Make	Depth	Type	Size	Qty	Make
Guide Shoe					Packer					Top Plug	4.5	1	
Float Shoe					Bridge Plug					Bottom Plug			
Float Collar					Retainer					SSR plug set			
Insert Float										Plug Container	4.5	1	
Stage Tool										Centralizers			

Miscellaneous Materials

Gelling Agt	Conc	Surfactant	Conc	Acid Type	Qty	Conc	%
Treatment Fld	Conc	Inhibitor	Conc	Sand Type	Size	Qty	

Fluid Data										
Stage/Plug #: 1										
Fluid #	Stage Type	Fluid Name	Qty	Qty uom	Mixing Density lbm/gal	Yield ft ³ /sk	Mix Fluid Gal/sk	Rate bbl/min	Total Mix Fluid Gal/sk	
1	Dyed Polyflake Spacer		50	bbl	8.33	.0	.0	.0		
2	Lead Cement	VARICEM (TM) CEMENT (452009)	118.5	sacks	12.8	1.6	7.31			
3	Tail Cement	VARICEM (TM) CEMENT (452009)	171.5	sacks	13.2	1.47	6.32			
4	KCL DISPLACEMENT		101.5	bbl	8.4	.0	.0	.0		
Calculated Values		Pressures		Volumes						
Displacement	101.5	Shut In: Instant		Lost Returns		Cement Slurry	290	Pad		
Top Of Cement	660	5 Min		Cement Returns	0	Actual Displacement	101.5	Treatment		
Frac Gradient		15 Min		Spacers	50	Load and Breakdown		Total Job		
Rates										
Circulating	7	Mixing	7	Displacement	8	Avg. Job	7			
Cement Left In Pipe	Amount	47 ft	Reason	Shoe Joint						
Frac Ring # 1 @	ID	Frac ring # 2 @	ID	Frac Ring # 3 @	ID	Frac Ring # 4 @	ID			
The Information Stated Herein Is Correct				Customer Representative Signature						

The Road to Excellence Starts with Safety

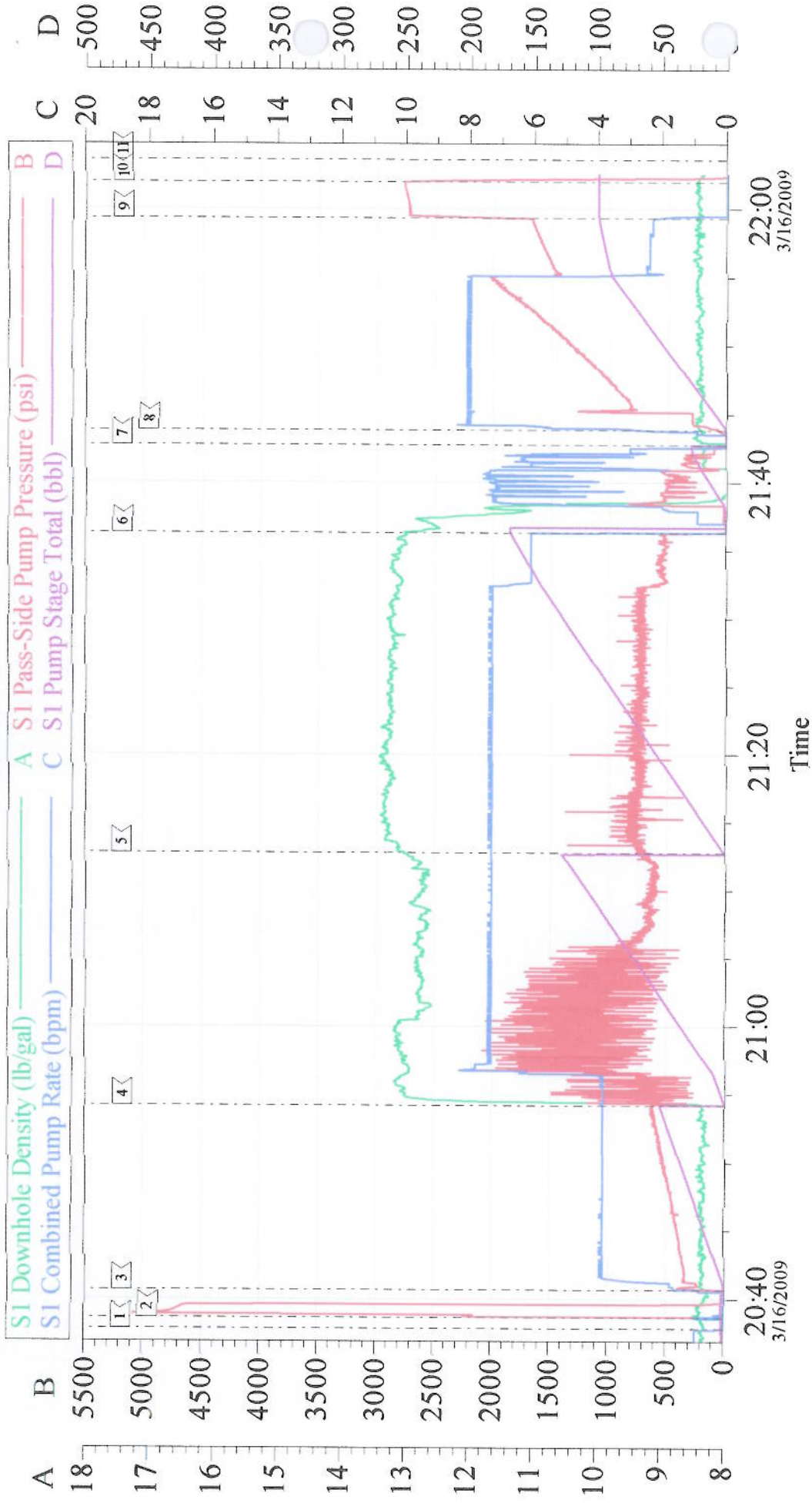
Sold To #: 338668	Ship To #: 2695503	Quote #:	Sales Order #: 6551070
Customer: CHEVRON - MID-CONTINENT EBIZ	Customer Rep: DOHERTY, ED		
Well Name: SKR	Well #: 598-36-BV-22	API/UWI #: 05-045-16929	
Field: PICEANCE	City (SAP): PARACHUTE	County/Parish: Garfield	State: Colorado
Legal Description:			
Lat: N 39.567 deg. OR N 39 deg. 33 min. 59.648 secs.		Long: W 108.347 deg. OR W -109 deg. 39 min. 12.499 secs.	
Contractor: H&P 316	Rig/Platform Name/Num: H&P 316		
Job Purpose: Cement Production Casing			Ticket Amount:
Well Type: Development Well	Job Type: Cement Production Casing		
Sales Person: DUNNING, DUSTIN	Srv Supervisor: FEUERBORN, JOHN	MBU ID Emp #: 381677	

Activity Description	Date/Time	Cht #	Rate bbl/ min	Volume bbl		Pressure psig		Comments
				Stage	Total	Tubing	Casing	
Depart Yard Safety Meeting	03/16/2009 14:00							
Crew Leave Yard	03/16/2009 14:15							
Arrive At Loc	03/16/2009 16:00							
Safety Meeting - Assessment of Location	03/16/2009 16:10							
Other	03/16/2009 16:15							SPOT EQUIPMENT
Pre-Rig Up Safety Meeting	03/16/2009 16:30							
Rig-Up Equipment	03/16/2009 16:45							USED TARP UNDER PUMP TRUCK
Other	03/16/2009 19:00							RIG CIRCULATING ON BOTTOM
Pre-Job Safety Meeting	03/16/2009 20:10							
Start Job	03/16/2009 20:39							6597 TOTAL PIPE 47 SJ 6610TD 10.1 MUD PASON GAS 70
Test Lines	03/16/2009 20:41							4000psi ON TRUCK AND LINES
Pump Spacer 1	03/16/2009 20:43		7	50			620.0	H2O POLYE FLAKE IN FIRST 20 BBLS BP 15
Pump Lead Cement	03/16/2009 20:56		7	118.5			1450. 0	415sks PUMPED AT 12.8ppg 1.6Y 7.31WR BP 16
Pump Tail Cement	03/16/2009 21:15		7	171.5			720.0	655sks PUMPED AT 13.2ppg 1.47Y 6.32WR BP 18
Clean Lines	03/16/2009 21:39							
Drop Top Plug	03/16/2009 21:45							PLUG AWAY

Cementing Job Log

Activity Description	Date/Time	Cht #	Rate bbl/ min	Volume bbl		Pressure psig		Comments
				Stage	Total	Tubing	Casing	
Pump Displacement	03/16/2009 21:46		8				2045. 0	H2O KCL 750LBS
Other	03/16/2009 21:57		2.5	91			1670. 0	SLOW RATE
Bump Plug	03/16/2009 22:02		2.5	101.5			2730. 0	BUMP 1000psi OVER
Check Floats	03/16/2009 22:05							HOLDING
End Job	03/16/2009 22:06							GOOD RETURNS PIPE LEFT STATIC 20BBLS SPACER TO SURFACE
Post-Job Safety Meeting (Pre Rig-Down)	03/16/2009 22:10							
Safety Meeting - Departing Location	03/16/2009 23:45							
Crew Leave Location	03/16/2009 23:55							

Chevron Production



Customer: Chevron	Job Date: 16-Mar-2009	Sales Order #: 6557070
Well Description: SKR 598-36-BV-22	Job Type: Production	ADC Used: Yes
Company Rep: ED Doherty	Cement Supervisor: John Feuerborn	Elite #: 10