

**CHEVRON - MID-CONTINENT EBIZ  
11111 S WILCREST DR - DO NOT MAIL  
HOUSTON, Texas**

SKR  
SKR 598-36-BV-20

**H&P 316/H&P/316**

## **Post Job Summary**

# **Cement Surface Casing**

Prepared for:  
Date Prepared:  
Version: 1

Service Supervisor: Main, Chad

Submitted by:

**HALLIBURTON**

## Cementing Job Summary

The Road to Excellence Starts with Safety

Sold To #: 338668	Ship To #: 2695501	Quote #:	Sales Order #: 6539118
Customer: CHEVRON - MID-CONTINENT EBIZ		Customer Rep: LINDSEY, JONATHAN	
Well Name: SKR	Well #: 598-36-BV-20	API/UWI #: 05-045-16939	
Field: PICEANCE	City (SAP): PARACHUTE	County/Parish: Garfield	State: Colorado
Lat: N 39.567 deg. OR N 39 deg. 33 min. 59.717 secs.		Long: W 108.347 deg. OR W -109 deg. 39 min. 12.463 secs.	
Contractor: H&P 316	Rig/Platform Name/Num: H&P 316		
Job Purpose: Cement Surface Casing			
Well Type: Development Well		Job Type: Cement Surface Casing	
Sales Person: DUNNING, DUSTIN	Srv Supervisor: Main, Chad	MBU ID Emp #: 335770	

### Job Personnel

HES Emp Name	Exp Hrs	Emp #	HES Emp Name	Exp Hrs	Emp #	HES Emp Name	Exp Hrs	Emp #
CHASTAIN, DERICK Allan	5.0	455848	LESLIE, MICHAEL D	5.0	320605	LYNGSTAD, FREDRICK D	5.0	403742
Main, Chad	5.0	335770	ONEAL, TALLEY Jack	5.0	456423			

### Equipment

HES Unit #	Distance-1 way	HES Unit #	Distance-1 way	HES Unit #	Distance-1 way	HES Unit #	Distance-1 way
10296152C	60 mile	10744549	60 mile	10804575	60 mile	10897797	60 mile
10951244	60 mile						

### Job Hours

Date	On Location Hours	Operating Hours	Date	On Location Hours	Operating Hours	Date	On Location Hours	Operating Hours
03/03/09	5.0	4.0						
TOTAL			Total is the sum of each column separately					

### Job

Formation Name	Formation Depth (MD)	Top	Bottom	Form Type	Job depth MD	Job Depth TVD	Wk Ht Above Floor	Perforation Depth (MD)	From	To
				BHST	1056. ft	1056. ft	3. ft			

### Job Times

	Date	Time	Time Zone
Called Out	02 - Mar - 2009	21:00	MST
On Location	03 - Mar - 2009	03:00	MST
Job Started	03 - Mar - 2009	05:19	MST
Job Completed	03 - Mar - 2009	06:11	MST
Departed Loc	03 - Mar - 2009	08:00	MST

### Well Data

Description	New / Used	Max pressure psig	Size in	ID in	Weight lbm/ft	Thread	Grade	Top MD ft	Bottom MD ft	Top TVD ft	Bottom TVD ft

### Sales/Rental/3<sup>rd</sup> Party (HES)

Description	Qty	Qty uom	Depth	Supplier
PORT. DAS W/CEMWIN;ACQUIRE W/HES, ZI	1	JOB		
ADC (AUTO DENSITY CTRL) SYS, /JOB,ZI	1	JOB		
PLUG,CMTG,TOP,8 5/8,HWE,7.20 MIN/8.09 MA	1	EA		

### Tools and Accessories

Type	Size	Qty	Make	Depth	Type	Size	Qty	Make	Depth	Type	Size	Qty	Make
Guide Shoe					Packer					Top Plug	8 5/8	1	HES
Float Shoe					Bridge Plug					Bottom Plug			
Float Collar					Retainer					SSR plug set			
Insert Float										Plug Container			
Stage Tool										Centralizers			

### Miscellaneous Materials

Gelling Agt	Conc	Surfactant	Conc	Acid Type	Qty	Conc	%
Treatment Fld	Conc	Inhibitor	Conc	Sand Type	Size	Qty	



Fluid Data									
Stage/Plug #: 1									
Fluid #	Stage Type	Fluid Name	Qty	Qty uom	Mixing Density lbm/gal	Yield ft <sup>3</sup> /sk	Mix Fluid Gal/sk	Rate bbl/min	Total Mix Fluid Gal/sk
1	DYE SPACER WITH POLYFLAKE		30.00	bbl	8.33	.0	.0	.0	
2	Lead Cement	VERSACEM (TM) SYSTEM (452010)	133.0	sacks	12.3	2.38	13.75		
	2 %	CAL-SEAL 60, 50 LB BAG (101217146)							
	2 %	ECONOLITE (100001580)							
	0.3 %	VERSASET, 55 LB SK (101376573)							
	5.64 lbm	SALT, 100 LB BAG (100003652)							
	0.125 lbm	POLY-E-FLAKE (101216940)							
	0.25 %	D-AIR 3000 (101007446)							
	13.75 Gal	FRESH WATER							
3	Tail Cement	VERSACEM (TM) SYSTEM (452010)	135.0	sacks	12.8	2.11	11.75		
	2 %	CAL-SEAL 60, 50 LB BAG (101217146)							
	2 %	ECONOLITE (100001580)							
	0.3 %	VERSASET, 55 LB SK (101376573)							
	5.64 lbm	SALT, 100 LB BAG (100003652)							
	11.75 Gal	FRESH WATER							
4	H2O DISPLACEMENT		63.00	bbl	8.33	.0	.0	.0	
Calculated Values		Pressures		Volumes					
Displacement	63.2	Shut In: Instant		Lost Returns	0	Cement Slurry	107	Pad	
Top Of Cement	SURFACE	5 Min		Cement Returns	10	Actual Displacement	63.2	Treatment	
Frac Gradient		15 Min		Spacers	30	Load and Breakdown		Total Job	
Rates									
Circulating	4	Mixing	7	Displacement	7	Avg. Job	7		
Cement Left In Pipe	Amount	42 ft	Reason	Shoe Joint					
Frac Ring # 1 @	ID	Frac ring # 2 @	ID	Frac Ring # 3 @	ID	Frac Ring # 4 @	ID		
The Information Stated Herein Is Correct				Customer Representative Signature					

## Cementing Job Log

*The Road to Excellence Starts with Safety*

Sold To #: 338668	Ship To #: 2695501	Quote #:	Sales Order #: 6539118
Customer: CHEVRON - MID-CONTINENT EBIZ	Customer Rep: LINDSEY, JONATHAN		
Well Name: SKR	Well #: 598-36-BV-20	API/UWI #: 05-045-16939	
Field: PICEANCE	City (SAP): PARACHUTE	County/Parish: Garfield	State: Colorado
Legal Description:			
Lat: N 39.567 deg. OR N 39 deg. 33 min. 59.717 secs.		Long: W 108.347 deg. OR W -109 deg. 39 min. 12.463 secs.	
Contractor: H&P 316	Rig/Platform Name/Num: H&P 316		
Job Purpose: Cement Surface Casing		Ticket Amount:	
Well Type: Development Well	Job Type: Cement Surface Casing		
Sales Person: DUNNING, DUSTIN	Srvc Supervisor: Main, Chad	MBU ID Emp #: 335770	

Activity Description	Date/Time	Cht #	Rate bbl/min	Volume bbl		Pressure psig		Comments
				Stage	Total	Tubing	Casing	
Arrive At Loc	03/03/2009 03:00							TD 1056' CSG 1036' SJ 42' MUD 8.8 PPG CONDUCTOR 83'
Assessment Of Location Safety Meeting	03/03/2009 03:10							RIG WAS RUNNING CASING WHEN HES ARRIVED
Pre-Rig Up Safety Meeting	03/03/2009 03:15							
Rig-Up Equipment	03/03/2009 03:20							
Rig-Up Completed	03/03/2009 04:30							
Pre-Job Safety Meeting	03/03/2009 05:00							RIG CIRCULATED ON WELL 1 HR BEFORE STARTING CEMENT JOB
Start Job	03/03/2009 05:19							NO PIPE MOVEMENT DURING CEMENT JOB
Pressure Test	03/03/2009 05:20						3000.0	
Pump Spacer 2	03/03/2009 05:22		4	20			98.0	10 IBS PLOY E FLAKE AND RED DYE
Pump Spacer 1	03/03/2009 05:27		2	10			142.0	H2O SPACER HES HAD FULL CIRCULATION ENTIRE JOB
Pump Lead Cement	03/03/2009 05:33		7	56.3			310.0	133 SKS AT 12.3 PPG 2.38 FT3/SK 13.75 GAL/SK
Pump Tail Cement	03/03/2009 05:41		7	50.7			259.0	135 SKS AT 12.8 PPG 2.11 FT3/SK 11.75 GAL/SK
Shutdown	03/03/2009 05:48							
Drop Top Plug	03/03/2009 05:50							

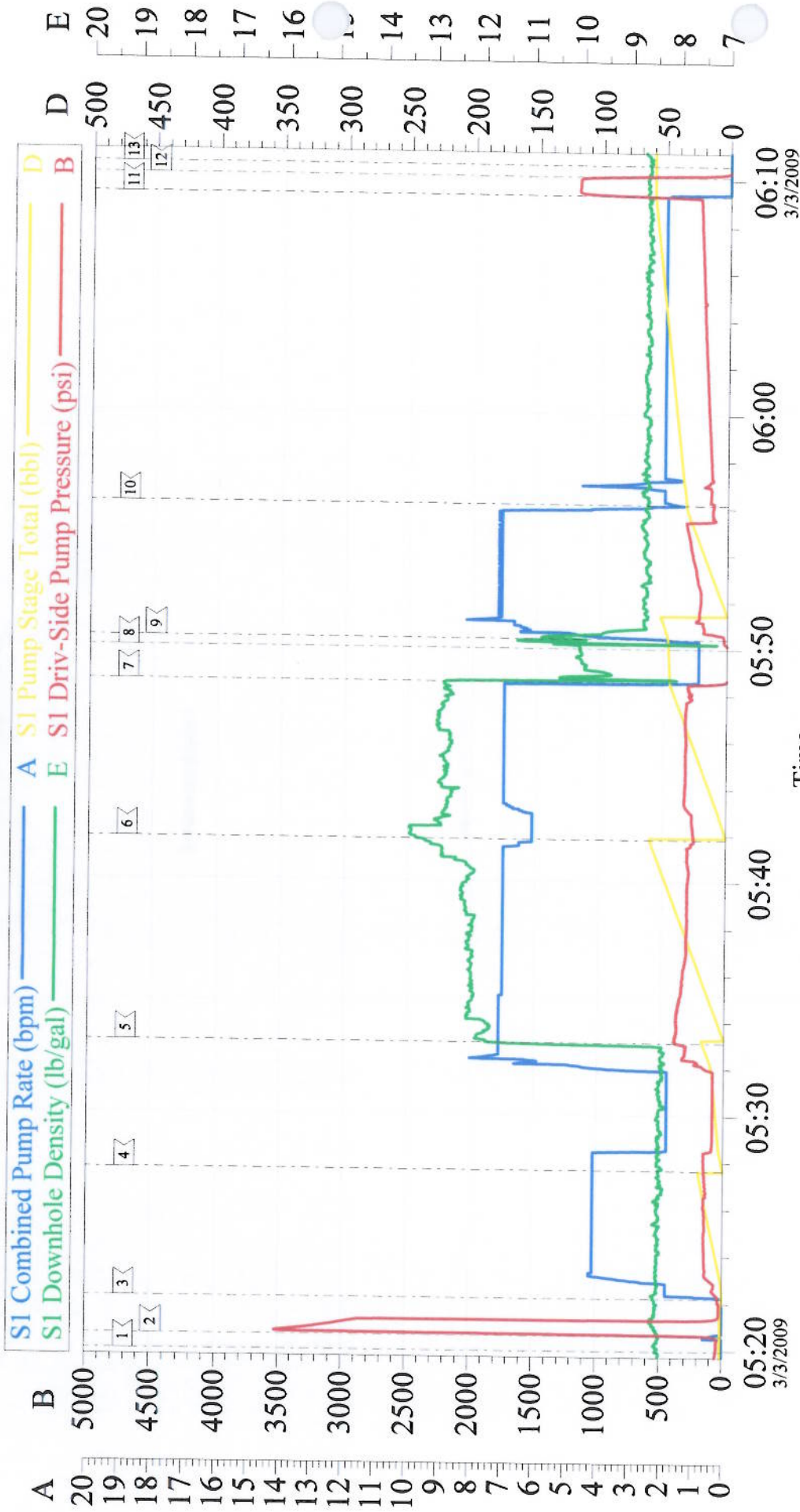


## Cementing Job Log

Activity Description	Date/Time	Cht #	Rate bbl/min	Volume bbl		Pressure psig		Comments
				Stage	Total	Tubing	Casing	
Pump Displacement	03/03/2009 05:51		7	63.2			223.0	DISPLACE WITH H2O SLOWED RATE AT 30 BBLS AWAY PER CUSTOMER BECAUSE CIRCULATION WAS ABOUT HAFE OF WHAT WE WERE PUMPING FULL CIRCULATION AT 2 BPM
Bump Plug	03/03/2009 06:09		2	63.2			1120.0	HES RETURNED TO SURFACE 10 BBLS OF CEMENT
Check Floats	03/03/2009 06:10							FLOATS HELD
End Job	03/03/2009 06:11							
Pre-Rig Down Safety Meeting	03/03/2009 06:15							
Rig-Down Equipment	03/03/2009 06:20							
Rig-Down Completed	03/03/2009 07:30							
Depart Location for Service Center or Other Site	03/03/2009 08:00							6 X 5 GAUGE NOT WORKING 4 X4 120 PSI
Other	03/03/2009 08:01							THANK YOU FOR USING HALLIBURTON GRAND JUNCTION

# CHEVRON

## 8 5/8 SURFACE



Customer: CHEVRON  
Well Description: SKR 598-36-BV-20  
Company Rep: JONATHAN LINDSEY

Job Date: 03-Mar-2009  
Job Type: SURFACE  
Cement Supervisor: CHAD MAIN

Sales Order #: 6539118  
ADC Used: YES  
Elite #: 9

OptiCem v6.4.2  
03-Mar-09 06:27