
CHEVRON - MID-CONTINENT EBIZ

**SKR 598-36-BV-19
SKINNER RIDGE
Garfield County , Colorado**

Cement Surface Casing
02-Jan-2009

Job Site Documents

The Road to Excellence Starts with Safety

Sold To #: 338668		Ship To #: 2695500		Quote #:		Sales Order #: 6420129	
Customer: CHEVRON - MID-CONTINENT EBIZ				Customer Rep: MEIER, DAN			
Well Name: SKR			Well #: 598-36-BV-19			API/UWI #: 05-045-16933	
Field: SKINNER RIDGE		City (SAP): PARACHUTE		County/Parish: Garfield		State: Colorado	
Lat: N 39.567 deg. OR N 39 deg. 33 min. 59.681 secs.				Long: W 108.347 deg. OR W -109 deg. 39 min. 12.344 secs.			
Contractor: H&P 316			Rig/Platform Name/Num: H&P 316				
Job Purpose: Cement Surface Casing							
Well Type: Development Well				Job Type: Cement Surface Casing			
Sales Person: HARTLEY, RICHARD				Srvs Supervisor: ROCKERT, CHRISTOPHER		MBU ID Emp #: 332914	

Job Personnel

HES Emp Name	Exp Hrs	Emp #	HES Emp Name	Exp Hrs	Emp #	HES Emp Name	Exp Hrs	Emp #
LUCADO, JARED	3	433527	PETERSON, NICHOLAS E	3	435305	PONDER, THOMAS Lynn	3	427112
ROCKERT, CHRISTOPHER Michael	3	332914	VIGIL, JOSHUA Quentin	3	447606			

Equipment

HES Unit #	Distance-1 way	HES Unit #	Distance-1 way	HES Unit #	Distance-1 way	HES Unit #	Distance-1 way
10551730C	120 mile	10623677	120 mile	10624108	120 mile	10951245	120 mile
10995025	120 mile						

Job Hours

Date	On Location Hours	Operating Hours	Date	On Location Hours	Operating Hours	Date	On Location Hours	Operating Hours
1/2/09	3	1						

TOTAL Total is the sum of each column separately

Job

Formation Name	Job	Job Times
Formation Depth (MD) Top	Bottom	Called Out
Form Type	BHST	On Location
Job depth MD	991. ft	Job Started
Water Depth	Wk Ht Above Floor	Job Completed
Perforation Depth (MD) From	To	Departed Loc

Well Data

Description	New / Used	Max pressure psig	Size in	ID in	Weight lbm/ft	Thread	Grade	Top MD ft	Bottom MD ft	Top TVD ft	Bottom TVD ft
-------------	------------	-------------------	---------	-------	---------------	--------	-------	-----------	--------------	------------	---------------

Sales/Rental/3rd Party (HES)

Description	Qty	Qty uom	Depth	Supplier
PLUG,CMTG,TOP,8 5/8,HWE,7.20 MIN/8.09 MA	1	EA		

Tools and Accessories

Type	Size	Qty	Make	Depth	Type	Size	Qty	Make	Depth	Type	Size	Qty	Make
Guide Shoe					Packer					Top Plug	8.625	1	
Float Shoe					Bridge Plug					Bottom Plug			
Float Collar					Retainer					SSR plug set			
Insert Float										Plug Container	8.625	1	
Stage Tool										Centralizers			

Miscellaneous Materials

Gelling Agt	Conc	Surfactant	Conc	Acid Type	Qty	Conc %
Treatment Fld	Conc	Inhibitor	Conc	Sand Type	Size	Qty

Fluid Data									
Stage/Plug #: 1									
Fluid #	Stage Type	Fluid Name	Qty	Qty uom	Mixing Density lbm/gal	Yield ft ³ /sk	Mix Fluid Gal/sk	Rate bbl/min	Total Mix Fluid Gal/sk
1	DYE SPACER AND POLYFLAKE		30	bbl	.	.0	.0	.0	
2	Lead Cement	VERSACEM (TM) SYSTEM (452010)	135	sacks	12.3	2.38	13.75		
	2 %	CAL-SEAL 60, 50 LB BAG (101217146)							
	2 %	ECONOLITE (100001580)							
	0.3 %	VERSASET, 55 LB SK (101376573)							
	5.64 lbm	SALT, 100 LB BAG (100003652)							
	0.125 lbm	POLY-E-FLAKE (101216940)							
	0.25 %	D-AIR 3000 (101007446)							
	13.75 Gal	FRESH WATER							
3	Tail Cement	VERSACEM (TM) SYSTEM (452010)	150	sacks	12.8	2.11	11.75		
	2 %	CAL-SEAL 60, 50 LB BAG (101217146)							
	2 %	ECONOLITE (100001580)							
	0.3 %	VERSASET, 55 LB SK (101376573)							
	5.64 lbm	SALT, 100 LB BAG (100003652)							
	11.75 Gal	FRESH WATER							
4	DISPLACEMENT		60	bbl	.	.0	.0	.0	
Calculated Values		Pressures		Volumes					
Displacement	60	Shut In: Instant		Lost Returns	NO	Cement Slurry	113.6	Pad	
Top Of Cement	SURFACE	5 Min		Cement Returns	30	Actual Displacement	60	Treatment	
Frac Gradient		15 Min		Spacers	30	Load and Breakdown		Total Job	204
Rates									
Circulating	RIG	Mixing	7	Displacement	7	Avg. Job	7		
Cement Left In Pipe	Amount	47.24 ft	Reason	Shoe Joint					
Frac Ring # 1 @	ID	Frac ring # 2 @	ID	Frac Ring # 3 @	ID	Frac Ring # 4 @	ID		
The Information Stated Herein Is Correct				Customer Representative Signature					

The Road to Excellence Starts with Safety

Sold To #: 338668	Ship To #: 2695500	Quote #:	Sales Order #: 6420129
Customer: CHEVRON - MID-CONTINENT EBIZ	Customer Rep: MEIER, DAN		
Well Name: SKR	Well #: 598-36-BV-19	API/UWI #: 05-045-16933	
Field: SKINNER RIDGE	City (SAP): PARACHUTE	County/Parish: Garfield	State: Colorado
Legal Description:			
Lat: N 39.567 deg. OR N 39 deg. 33 min. 59.681 secs.		Long: W 108.347 deg. OR W -109 deg. 39 min. 12.344 secs.	
Contractor: H&P 316	Rig/Platform Name/Num: H&P 316		
Job Purpose: Cement Surface Casing	Ticket Amount:		
Well Type: Development Well	Job Type: Cement Surface Casing		
Sales Person: HARTLEY, RICHARD	Srv Supervisor: ROCKERT, CHRISTOPHER	MBU ID Emp #: 332914	

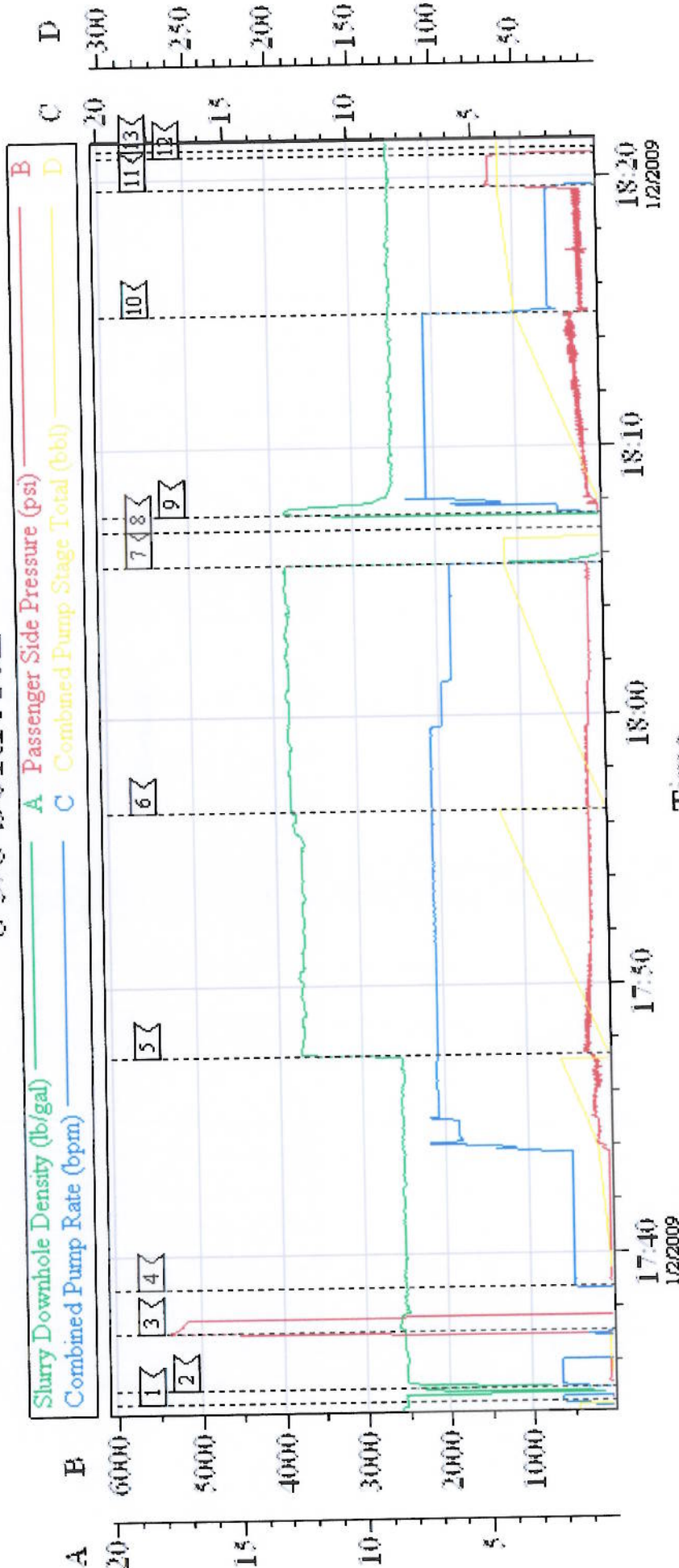
Activity Description	Date/Time	Cht #	Rate bbl/min	Volume bbl		Pressure psig		Comments
				Stage	Total	Tubing	Casing	
Call Out	01/02/2009 09:00							TD-1030/ TP-991/ SHOE-47.24/ MUD-9.2/ HOLE- 12.25
Arrive At Loc	01/02/2009 14:00							ELITE #2
Rig-Up Equipment	01/02/2009 14:15							HAD TO RIG UP IN CELLAR, FOR OFFLINE JOB. WHEN WE SHOWED UP THEY HAD SOME CASING TO RUN.
Safety Meeting - Pre Job	01/02/2009 17:00							COMPANY MAN CONFRIMED PLUG WAS LOADED AND ZIP TIED.
Start Job	01/02/2009 17:34							USED OFF LINE CEMENT HEAD
Other	01/02/2009 17:35		2		2		55.0	PRIME LINES
Test Lines	01/02/2009 17:37		1				5300.0	NO LEAKS
Pump Spacer	01/02/2009 17:38		7		30		197.0	FRESH WATER POLYFLAKE AND DYE IN FIRST 10 BBLS. CIRCULATION ESTABLISHED
Pump Lead Cement	01/02/2009 17:47		7		57.2		286.0	135 SKS/ 2.38 YIELD, 13.75 GAL.SK
Pump Tail Cement	01/02/2009 17:56		7		56.4		220.0	150 SKS/ 2.11 YIELD/ 11.75 GAL.SK
Shutdown	01/02/2009 18:05							
Drop Plug	01/02/2009 18:06							PLUG AWAY

Cementing Job Log

Activity Description	Date/Time	Cht #	Rate bbl/ min	Volume bbl		Pressure psig		Comments
				Stage	Total	Tubing	Casing	
Pump Displacement	01/02/2009 18:07		7				145.0	FRESH WATER
Cement Returns to Surface	01/02/2009 18:11		7		30			30 BBLS CEMENT TO SURFACE
Slow Rate	01/02/2009 18:14		2		50		198.0	
Bump Plug	01/02/2009 18:19		2		60		228.0	PRESSURED UP TO 1300 PSI ON FLOATS
Check Floats	01/02/2009 18:20							FLOATS HELD
End Job	01/02/2009 18:21							GOOD CIRCULATION THROUGHOUT JOB.
Rig-Down Equipment	01/02/2009 18:30							THANK YOU FOR USING HALLIBURTON CHRIS ROCKERT AND CREW.

CHEVRON

8 5/8 SURFACE



Event Log			
1 START JOB	17:34:32	2 PRIME LINES	17:35:00
4 PUMP SPACER	17:38:44	5 PUMP LEAD CEMENT	17:47:20
7 SHUTDOWN	18:05:38	8 DROP PLUG	18:06:59
10 SLOW RATE	18:14:56	11 BUMP PLUG	18:19:39
13 END JOB	18:21:02	12 CHECK FLOATS	18:20:48
		3 TEST LINES	17:37:07
		6 PUMP TAIL CEMENT	17:56:27
		9 PUMP DISPLACEMENT	18:07:32

Customer: CHEVRON	Job Date: 01/02/09	Ticket #: 6420129
Well Desc: SKR- 598-36-BV-19	Job Type: 8 5/8 SURFACE	ADC USED: YES
COMPANY REP: ED DOHERTY	CEMENTER: CHRIS ROCKERT	DRIVER: THOMAS PONDER

TG Version G3.2.2
02-Jan-09 18:58