

**CHEVRON - MID-CONTINENT EBIZ
11111 S WILCREST DR - DO NOT MAIL
HOUSTON, Texas**

SKR
SKR 598-36-BV-18

H&P 316/H&P/316

Post Job Summary

Cement Production Casing

Prepared for:
Date Prepared:
Version: 1

Service Supervisor: MAIN, CHAD

Submitted by:

HALLIBURTON

The Road to Excellence Starts with Safety

Sold To #: 338668	Ship To #: 2695499	Quote #:	Sales Order #: 6574923
Customer: CHEVRON - MID-CONTINENT EBIZ		Customer Rep: HAUG, JORDAN	
Well Name: SKR	Well #: 598-36-BV-18	API/UWI #: 05-045-16940	
Field: PICEANCE	City (SAP): PARACHUTE	County/Parish: Garfield	State: Colorado
Lat: N 39.567 deg. OR N 39 deg. 33 min. 59.785 secs.		Long: W 108.347 deg. OR W -109 deg. 39 min. 12.427 secs.	
Contractor: H&P 316	Rig/Platform Name/Num: H&P 316		
Job Purpose: Cement Production Casing			
Well Type: Development Well	Job Type: Cement Production Casing		
Sales Person: HARTLEY, RICHARD	Srvc Supervisor: MAIN, CHAD	MBU ID Emp #: 335770	

Job Personnel

HES Emp Name	Exp Hrs	Emp #	HES Emp Name	Exp Hrs	Emp #	HES Emp Name	Exp Hrs	Emp #
BRUN, JUSTIN	7.0	459269	HAMMOND, ANSON Perry	7.0	421370	MAIN, CHAD R	7.0	335770
MUHLESTEIN, RYAN Herrick	7.0	453609	NYE, KEVEN	7.0	460558	WILKE, ANDREW J	7.0	398822
YOUNG, JEREMY R	7.0	418013						

Equipment

HES Unit #	Distance-1 way	HES Unit #	Distance-1 way	HES Unit #	Distance-1 way	HES Unit #	Distance-1 way

Job Hours

Date	On Location Hours	Operating Hours	Date	On Location Hours	Operating Hours	Date	On Location Hours	Operating Hours
03/21/2009	3.0	1.0	03/22/2009	4.0				
TOTAL			Total is the sum of each column separately					

Job

Job Times

Formation Name	Formation Depth (MD)	Top	Bottom	Form Type	Job depth MD	Job Depth TVD	Water Depth	Perforation Depth (MD)	From	To	Called Out	Date	Time	Time Zone
				BHST	6010. ft	6010. ft						21 - Mar - 2009	16:00	MST
											On Location	21 - Mar - 2009	21:00	MST
											Job Started	22 - Mar - 2009	00:45	MST
											Job Completed	22 - Mar - 2009	02:11	MST
											Departed Loc	22 - Mar - 2009	04:00	MST

Well Data

Description	New / Used	Max pressure psig	Size in	ID in	Weight lbm/ft	Thread	Grade	Top MD ft	Bottom MD ft	Top TVD ft	Bottom TVD ft
4.5" Production	Unknown		4.5	4.	11.6				6000.		6000.
Surface	Unknown		8.625	8.097	24.				1028.		1028.

Sales/Rental/3rd Party (HES)

Description	Qty	Qty uom	Depth	Supplier
PLUG,CMTG,TOP,4 1/2,HWE,3.65 MIN/4.14 MA	1	EA		
ADC (AUTO DENSITY CTRL) SYS, /JOB,ZI	1	JOB		
PORT. DAS W/CEMWIN;ACQUIRE W/HES, ZI	1	JOB		

Tools and Accessories

Type	Size	Qty	Make	Depth	Type	Size	Qty	Make	Depth	Type	Size	Qty	Make
Guide Shoe					Packer					Top Plug	4.5	1	HES
Float Shoe					Bridge Plug					Bottom Plug			
Float Collar					Retainer					SSR plug set			
Insert Float										Plug Container			
Stage Tool										Centralizers			

Miscellaneous Materials

Gelling Agt	Conc	Surfactant	Conc	Acid Type	Qty	Conc	%
Treatment Fld	Conc	Inhibitor	Conc	Sand Type	Size	Qty	

Fluid Data										
Stage/Plug #: 1										
Fluid #	Stage Type	Fluid Name	Qty	Qty uom	Mixing Density lbm/gal	Yield ft ³ /sk	Mix Fluid Gal/sk	Rate bbl/min	Total Mix Fluid Gal/sk	
1	DYED SPACER		50.00	bbl	8.33	.0	.0	.0		
2	LEAD CEMENT	VARICEM (TM) CEMENT (452009)	305.0	sacks	12.8	1.6	7.31			
3	Tail Cement	VARICEM (TM) CEMENT (452009)	630.0	sacks	13.2	1.47	6.32			
4	DISPLACEMENT		92.00	bbl	.	.0	.0	.0		
Calculated Values			Pressures		Volumes					
Displacement	91.9	Shut In: Instant		Lost Returns	0	Cement Slurry	251.8	Pad		
Top Of Cement	SURFACE	5 Min		Cement Returns	0	Actual Displacement	91.9	Treatment		
Frac Gradient		15 Min		Spacers	50	Load and Breakdown		Total Job		
Rates										
Circulating	4	Mixing	6	Displacement	8	Avg. Job	6			
Cement Left In Pipe	Amount	46 ft	Reason	Shoe Joint						
Frac Ring # 1 @	ID	Frac ring # 2 @	ID	Frac Ring # 3 @	ID	Frac Ring # 4 @	ID			
The Information Stated Herein Is Correct				Customer Representative Signature						

The Road to Excellence Starts with Safety

Sold To #: 338668	Ship To #: 2695499	Quote #:	Sales Order #: 6574923
Customer: CHEVRON - MID-CONTINENT EBIZ	Customer Rep: HAUG, JORDAN		
Well Name: SKR	Well #: 598-36-BV-18	API/UWI #: 05-045-16940	
Field: PICEANCE	City (SAP): PARACHUTE	County/Parish: Garfield	State: Colorado
Legal Description:			
Lat: N 39.567 deg. OR N 39 deg. 33 min. 59.785 secs.		Long: W 108.347 deg. OR W -109 deg. 39 min. 12.427 secs.	
Contractor: H&P 316	Rig/Platform Name/Num: H&P 316		
Job Purpose: Cement Production Casing			Ticket Amount:
Well Type: Development Well	Job Type: Cement Production Casing		
Sales Person: HARTLEY, RICHARD	Srv Supervisor: MAIN, CHAD	MBU ID Emp #: 335770	

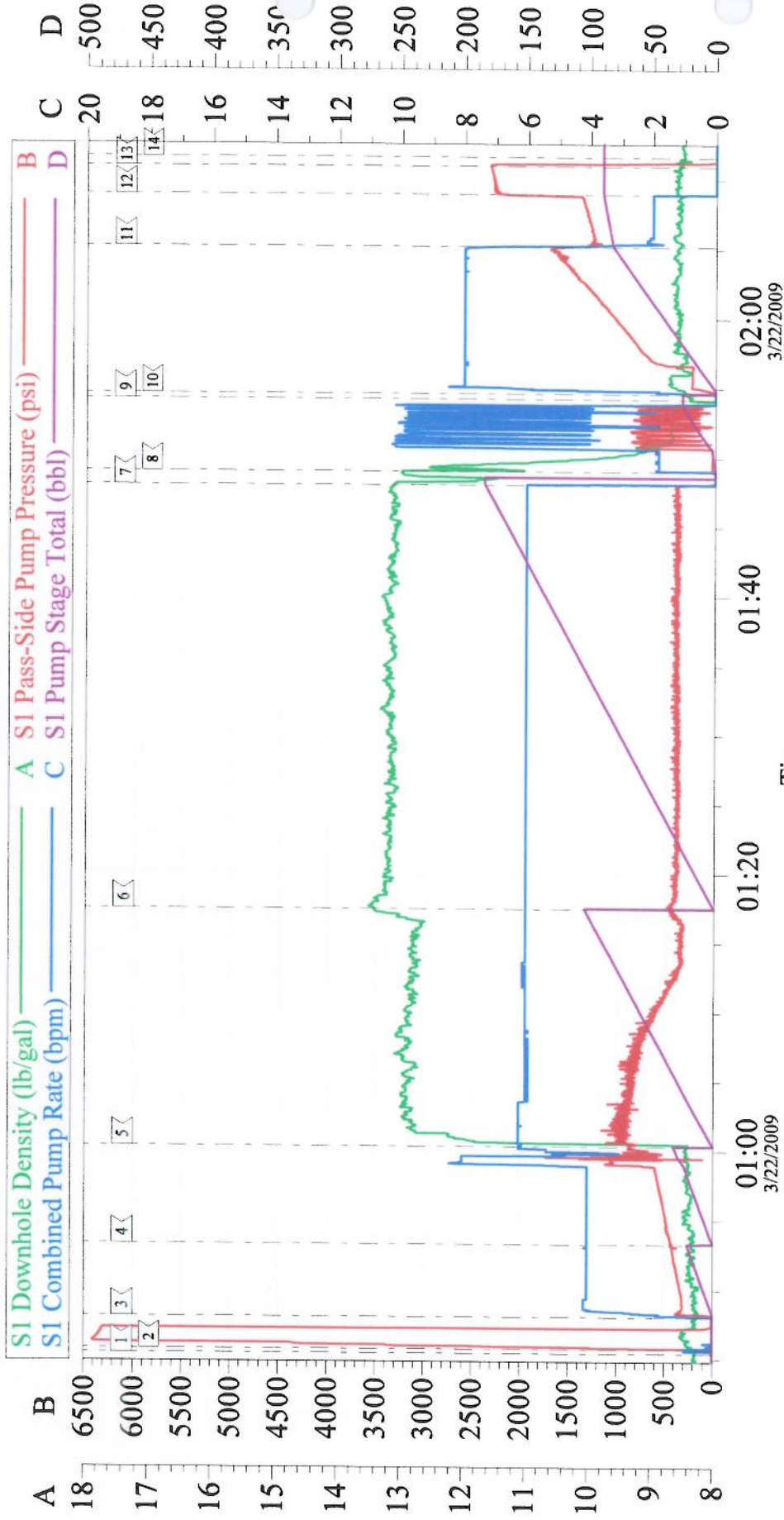
Activity Description	Date/Time	Cht #	Rate bbl/min	Volume bbl		Pressure psig		Comments
				Stage	Total	Tubing	Casing	
Arrive At Loc	03/21/2009 21:00							TD 6010' CSG 5980' SJ 46' MUD 10.5 PPG SURFACE CSG 1027'
Assessment Of Location Safety Meeting	03/21/2009 21:10							RIG WAS STILL RUNNING CASING WHEN HES ARRIVED
Pre-Rig Up Safety Meeting	03/21/2009 21:30							RIG CIRCULATED ON WELL FOR 1 HR
Rig-Up Equipment	03/21/2009 21:45							
Rig-Up Completed	03/21/2009 22:45							
Pre-Job Safety Meeting	03/22/2009 00:20							
Start Job	03/22/2009 00:45							
Pressure Test	03/22/2009 00:46						5000.0	
Pump Spacer 1	03/22/2009 00:48		4	20			315.0	H2O WITH PLOY E FLAKE AND DYE HES HAD FULL CIRCULATION ENTIRE JOB
Pump Spacer 2	03/22/2009 00:53		8	30			1031.0	H2O
Pump Lead Cement	03/22/2009 01:00		6	86.9			880.0	305 SKS AT 12.8 PPG 1.6 FT3/SK 7.31 GAL/SK
Pump Tail Cement	03/22/2009 01:17		6	164.9			480.0	630 SKS AT 13.2 PPG 1.47 FT3/SK 6.32 GAL/SK
Shutdown	03/22/2009 01:48							
Clean Lines	03/22/2009 01:49			15				

Cementing Job Log

Activity Description	Date/Time	Cht #	Rate bbl/ min	Volume bbl		Pressure psig		Comments
				Stage	Total	Tubing	Casing	
Drop Plug	03/22/2009 01:53							
Pump Displacement	03/22/2009 01:54		8	91.9			238.0	KCL WATER
Bump Plug	03/22/2009 02:08		2	91.9			1274.0	HES RETURNED TO SURFACE SOME PLOY-E-FLAKE NO CEMENT
Check Floats	03/22/2009 02:10						2300.0	FLOATS HELD
End Job	03/22/2009 02:11							
Safety Meeting - Pre Rig-Down	03/22/2009 02:15							
Rig-Down Equipment	03/22/2009 02:30							
Rig-Down Completed	03/22/2009 03:30							
Depart Location Safety Meeting	03/22/2009 03:45							
Depart from Service Center or Other Site	03/22/2009 04:00							6X5 PSI CMT 18 PSI 6X5 PSI H2O 12 PSI 4X4 120 PSI
Other	03/22/2009 04:01							THANK YOU FOR USING HALLIBURTON GRAND JUNCTION

Chevron

4 1/2" Production



Local Event Log			
1 START JOB	00:45:25	2 TEST LINES	00:45:43
4 PUMP H2O SPACER	00:53:15	3 PUMP DYED SPACER	00:48:02
7 SHUT DOWN	01:48:02	5 PUMP LEAD CEMENT	01:00:19
10 START DISPLACEMENT	01:54:37	6 PUMP TAIL CEMENT	01:17:27
13 CHECK FLOATS/FLOATS HELD	02:10:56	8 WASH PUMPS & LINES	01:49:01
		9 DROP TOP PLUG	01:54:13
		11 SLOW RATE	02:08:53
		12 LAND PLUG	
		14 END JOB	

Customer: CHEVRON - MID-CONTINENT Well Description: Skinner Ridge 598-36-BV-18 Company Rep: Jordan Haug	Job Date: 21-Mar-2009	Sales Order #: 6574923	OptiCem v6.4.2 22-Mar-09 02:19
	Job Type: Production	ADC Used: Yes	
	Cement Supervisor: Chad Main	Elite #/Operator: #9/Jeremy Young	