

**CHEVRON - MID-CONTINENT EBIZ
11111 S WILCREST DR - DO NOT MAIL
HOUSTON, Texas**

SKR
SKR 598-36-BV-18

H&P 316/H&P/316

Post Job Summary

Cement Surface Casing

Prepared for: CHAD CAVANDER
Date Prepared: 2/23/09
Version: 1

Service Supervisor: CARTER, ERIC

Submitted by:

HALLIBURTON

Cementing Job Summary

The Road to Excellence Starts with Safety

Sold To #: 338668	Ship To #: 2695499	Quote #:	Sales Order #: 6522287
Customer: CHEVRON - MID-CONTINENT EBIZ		Customer Rep: CHAD CAVANDER	
Well Name: SKR	Well #: 598-36-BV-18	API/UWI #:	
Field: PICEANCE	City (SAP): PARACHUTE	County/Parish: Garfield	State: Colorado
Contractor: H&P 316	Rig/Platform Name/Num: H&P 316		
Job Purpose: Cement Surface Casing			
Well Type: Development Well		Job Type: Cement Surface Casing	
Sales Person: DUNNING, DUSTIN		Srv Supervisor: CARTER, ERIC	MBU ID Emp #: 345598

Job Personnel

HES Emp Name	Exp Hrs	Emp #	HES Emp Name	Exp Hrs	Emp #	HES Emp Name	Exp Hrs	Emp #
BIRCH, ZEB	4.5	416898	BRADY, JERED Austin	4.5	213392	CARTER, ERIC Earl	4.5	345598
CREECH, STEVEN Michael	4.5	420183	HAMMOND, ANSON Perry	4.5	421370	KUKUS, CHRISTOPHER A	4.5	413952

Equipment

HES Unit #	Distance-1 way	HES Unit #	Distance-1 way	HES Unit #	Distance-1 way	HES Unit #	Distance-1 way
10296148C	120 mile	10710872	120 mile	10829469	120 mile	10867304	120 mile
10988978	120 mile	10998054	120 mile				

Job Hours

Date	On Location Hours	Operating Hours	Date	On Location Hours	Operating Hours	Date	On Location Hours	Operating Hours
2/23/09	4.5	2						
TOTAL			Total is the sum of each column separately					

Job

Formation Name	Formation Depth (MD)	Top	Bottom	Job depth MD	Job Depth TVD	Water Depth	Perforation Depth (MD)	From	To	Job Times	Date	Time	Time Zone
		0	1045		1030. ft					Called Out	23 - Feb - 2009	14:30	MST
Form Type		BHST								On Location	23 - Feb - 2009	19:00	MST
										Job Started	23 - Feb - 2009	20:58	MST
										Job Completed	23 - Feb - 2009	21:59	MST
										Departed Loc	23 - Feb - 2009	23:30	MST

Well Data

Description	New / Used	Max pressure psig	Size in	ID in	Weight lbm/ft	Thread	Grade	Top MD ft	Bottom MD ft	Top TVD ft	Bottom TVD ft
-------------	------------	-------------------	---------	-------	---------------	--------	-------	-----------	--------------	------------	---------------

Sales/Rental/3rd Party (HES)

Description	Qty	Qty uom	Depth	Supplier
PLUG,CMTG, TOP, 8 5/8, HWE, 7.20 MIN/8.09 MA	1	EA		
PORT. DAS W/CEMWIN; ACQUIRE W/HES, ZI	1	JOB		
ADC (AUTO DENSITY CTRL) SYS, /JOB, ZI	1	JOB		

Tools and Accessories

Type	Size	Qty	Make	Depth	Type	Size	Qty	Make	Depth	Type	Size	Qty	Make
Guide Shoe					Packer					Top Plug	8.625	1	
Float Shoe					Bridge Plug					Bottom Plug			
Float Collar					Retainer					SSR plug set			
Insert Float										Plug Container	8.625	1	
Stage Tool										Centralizers			

Miscellaneous Materials

Gelling Agt	Conc	Surfactant	Conc	Acid Type	Qty	Conc	%
Treatment Fld	Conc	Inhibitor	Conc	Sand Type	Size	Qty	

Fluid Data									
Stage/Plug #: 1									
Fluid #	Stage Type	Fluid Name	Qty	Qty uom	Mixing Density lbm/gal	Yield ft ³ /sk	Mix Fluid Gal/sk	Rate bbl/min	Total Mix Fluid Gal/sk
1	PolyFlake Dyed Spacer		20	bbl	8.33	.0	.0	.0	
2	FRESH WATER Spacer		10	bbl	8.33	.0	.0	.0	
3	Lead Cement	VERSACEM (TM) SYSTEM (452010)	135	sacks	12.3	2.38	13.75		
	2 %	CAL-SEAL 60, 50 LB BAG (101217146)							
	2 %	ECONOLITE (100001580)							
	0.3 %	VERSASET, 55 LB SK (101376573)							
	5.64 lbm	SALT, 100 LB BAG (100003652)							
	0.125 lbm	POLY-E-FLAKE (101216940)							
	0.25 %	D-AIR 3000 (101007446)							
	13.75 Gal	FRESH WATER							
4	Tail Cement	VERSACEM (TM) SYSTEM (452010)	140	sacks	12.8	2.11	11.75		
	2 %	CAL-SEAL 60, 50 LB BAG (101217146)							
	2 %	ECONOLITE (100001580)							
	0.3 %	VERSASET, 55 LB SK (101376573)							
	5.64 lbm	SALT, 100 LB BAG (100003652)							
	11.75 Gal	FRESH WATER							
5	Fresh Water Displacement		63	bbl	8.33	.0	.0	.0	
Calculated Values		Pressures		Volumes					
Displacement	63	Shut In: Instant		Lost Returns	NONE	Cement Slurry	109.8	Pad	
Top Of Cement	SURFACE	5 Min		Cement Returns	5	Actual Displacement	63	Treatment	
Frac Gradient		15 Min		Spacers	30	Load and Breakdown		Total Job	203
Rates									
Circulating		Mixing	6	Displacement	6	Avg. Job			6
Cement Left In Pipe	Amount	40 ft	Reason	Shoe Joint					
Frac Ring # 1 @	ID	Frac ring # 2 @	ID	Frac Ring # 3 @	ID	Frac Ring # 4 @	ID		
The Information Stated Herein Is Correct				Customer Representative Signature					

The Road to Excellence Starts with Safety

Sold To #: 338668	Ship To #: 2695499	Quote #:	Sales Order #: 6522287
Customer: CHEVRON - MID-CONTINENT EBIZ	Customer Rep: CHAD CAVANDER		
Well Name: SKR	Well #: 598-36-BV-18	API/UWI #:	
Field: PICEANCE	City (SAP): PARACHUTE	County/Parish: Garfield	State: Colorado
Legal Description:			
Lat: N 0 deg. OR N 0 deg. 0 min. 0 secs.		Long: E 0 deg. OR E 0 deg. 0 min. 0 secs.	
Contractor: H&P 316	Rig/Platform Name/Num: H&P 316		
Job Purpose: Cement Surface Casing	Ticket Amount:		
Well Type: Development Well	Job Type: Cement Surface Casing		
Sales Person: DUNNING, DUSTIN	Srv Supervisor: CARTER, ERIC	MBU ID Emp #: 345598	

Activity Description	Date/Time	Cht #	Rate bbl/min	Volume bbl		Pressure psig		Comments
				Stage	Total	Tubing	Casing	
Call Out	02/23/2009 14:30							
Depart Yard Safety Meeting	02/23/2009 16:20							ATTENDED BY ALL HES CREW
Crew Leave Yard	02/23/2009 16:30							
Arrive At Loc	02/23/2009 19:00							
Assessment Of Location Safety Meeting	02/23/2009 19:10							ATTENDED BY ALL HES CREW
Pre-Rig Up Safety Meeting	02/23/2009 19:50							ATTENDED BY ALL HES CREW
Rig-Up Equipment	02/23/2009 20:00							
Pre-Job Safety Meeting	02/23/2009 20:30							ATTENDED BY ALL HES CREW AND RIG CREW
Start Job	02/23/2009 20:58							TP 1030', TD 1045', SJ 40', FC 990', MW 9 PPG, CASING 8.625" 24#, J-55, HOLE 12.25"
Test Lines	02/23/2009 21:01		1	2				PRESSURED UP TO 2010 PSI, PRESSURE HELD
Pump Spacer 1	02/23/2009 21:04		6	20			192.0	POLY-FLAKE AND DYE WAS ADDED TO FRESH WATER
Pump Spacer 2	02/23/2009 21:08		6	10			198.0	FRESH WATER
Pump Lead Cement	02/23/2009 21:18		6	57.2			270.0	135 SKS MIXED AT 12.3 PPG, 2.38 YIELD, 13.75 GL/SK=57.2 BBLs

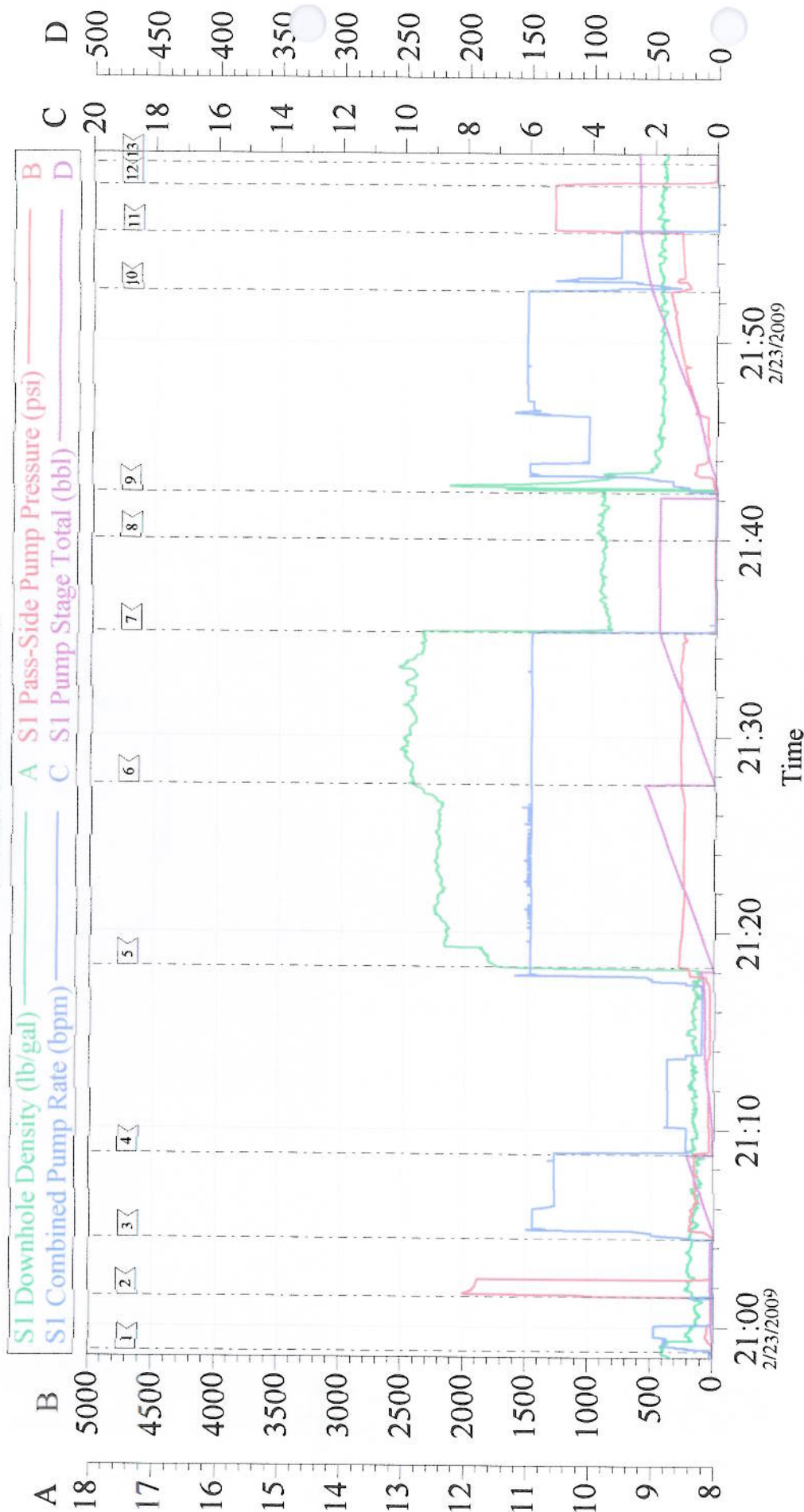
Cementing Job Log

Activity Description	Date/Time	Cht #	Rate bbl/ min	Volume bbl		Pressure psig		Comments
				Stage	Total	Tubing	Casing	
Pump Tail Cement	02/23/2009 21:27		6	52.6			275.0	140 SKS MIXED AT 12.8 PPG, 2.11 YIELD, 11.75 GL/SK=52.6 BBLs
Shutdown	02/23/2009 21:35							
Drop Top Plug	02/23/2009 21:39							PLUG LAUNCHED
Pump Displacement	02/23/2009 21:42		6	53			401.0	FRESH WATER
Slow Rate	02/23/2009 21:52		3	10			275.0	
Bump Plug	02/23/2009 21:55		3	63			1313. 0	PLUG LANDED AT 275 PSI
Check Floats	02/23/2009 21:57							FLOATS HELD
End Job	02/23/2009 21:59							GOOD CIRCULATION THROUGH OUT JOB, 5 BBLs OF CEMENT TO SURFACE=11.8 SKS, PIPE WAS NOT MOVED DURING JOB
Post-Job Safety Meeting (Pre Rig-Down)	02/23/2009 22:00							ATTENDED BY ALL HES CREW
Rig-Down Equipment	02/23/2009 22:10							
Depart Location Safety Meeting	02/23/2009 23:20							ATTENDED BY ALL HES CREW
Crew Leave Location	02/23/2009 23:30							THANK YOU FOR USING HALLIBURTON CEMENT, ERIC CARTER AND CREW.

X_____

CHEVRON, H+P 316

8.625 SURFACE



Local Event Log								
1	START JOB	20:58:45	2	TEST LINES	21:01:30	3	PUMP POLY-FLAKE,DYE SPACER	21:04:26
4	PUMP H2O SPACER	21:08:43	5	PUMP LEAD CEMENT	21:18:15	6	PUMP TAIL CEMENT	21:27:33
7	SHUTDOWN	21:35:15	8	DROP TOP PLUG	21:39:57	9	PUMP DISPLACEMENT	21:42:20
10	SLOW RATE	21:52:33	11	BUMP PLUG	21:55:29	12	CHECK FLOATS	21:57:52
13	END JOB	21:59:02						

Customer: CHEVRON - MID-CONTINENT FBIZ	Job Date: 23-Feb-2009	Sales Order #: 6522287
Well Description: SKR 598-36-BV-18	Job Type: SURFACE	ADC Used: YES
Company Rep: CHAD CAVANDER	Cement Supervisor: ERIC CARTER	Elite #/Operator: 1/STEVEN CREECH