



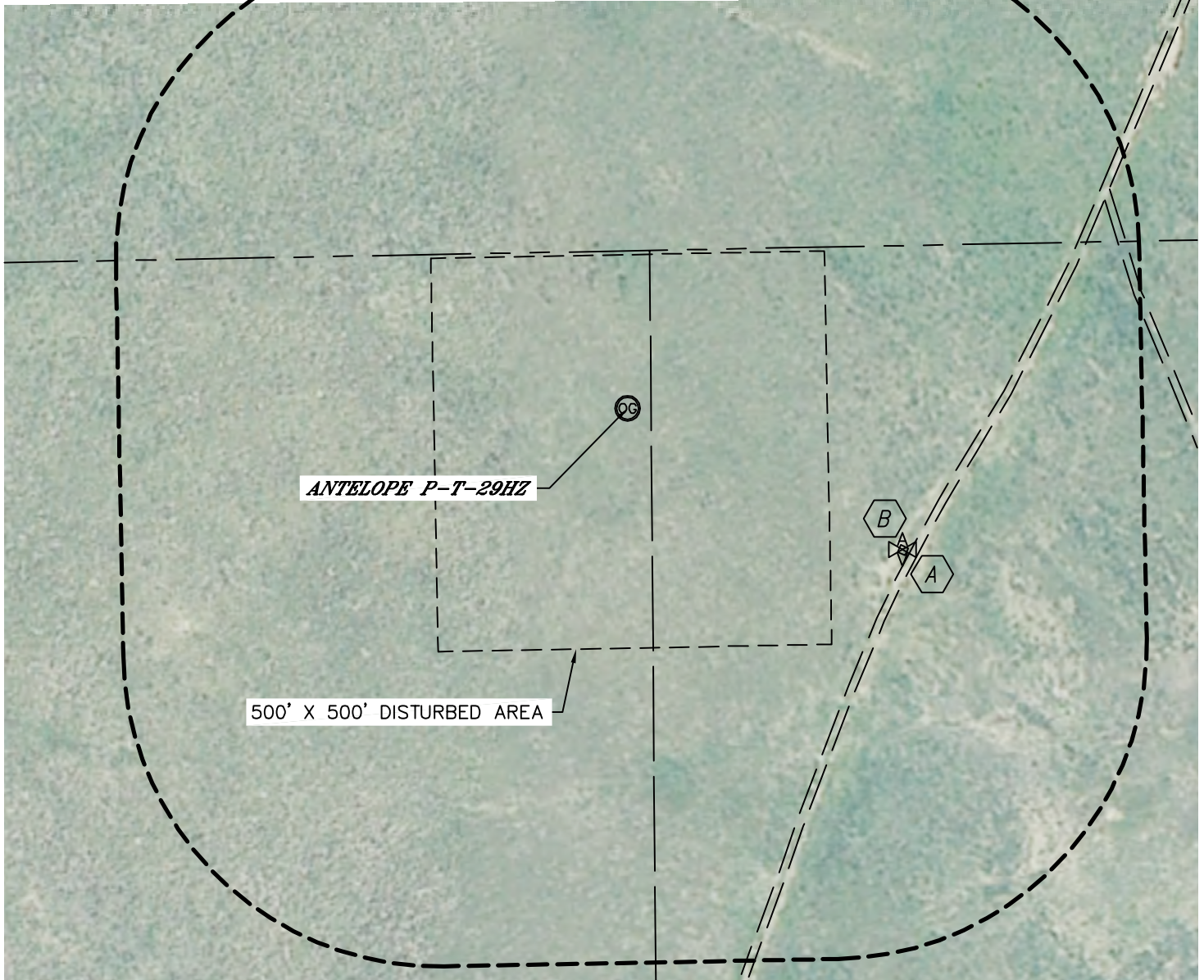
Lat40°, Inc. 1635 Foxtrail Drive, Suite 325 Loveland, CO 970-776-3321

LOCATION DRAWING

ANTELOPE P-T-29HZ

SECTION: 29
TOWNSHIP: 5N
RANGE: 62W

400' IMPROVEMENT BUFFER



ANTELOPE P-T-29HZ

500' X 500' DISTURBED AREA

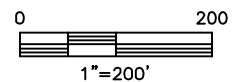
IMPROVEMENTS:



FIELD ROAD 408' SE, 665' NE



AIR VALVE 393' SE



NEAREST: BUILDING 5280'+, PUBLIC ROAD 5280'+,
ABOVE GROUND UTILITY 1664' N, RAILROAD 5280'+, PROPERTY LINE 200' N

DATE: 4/17/2012
PROJECT#: 2011349