

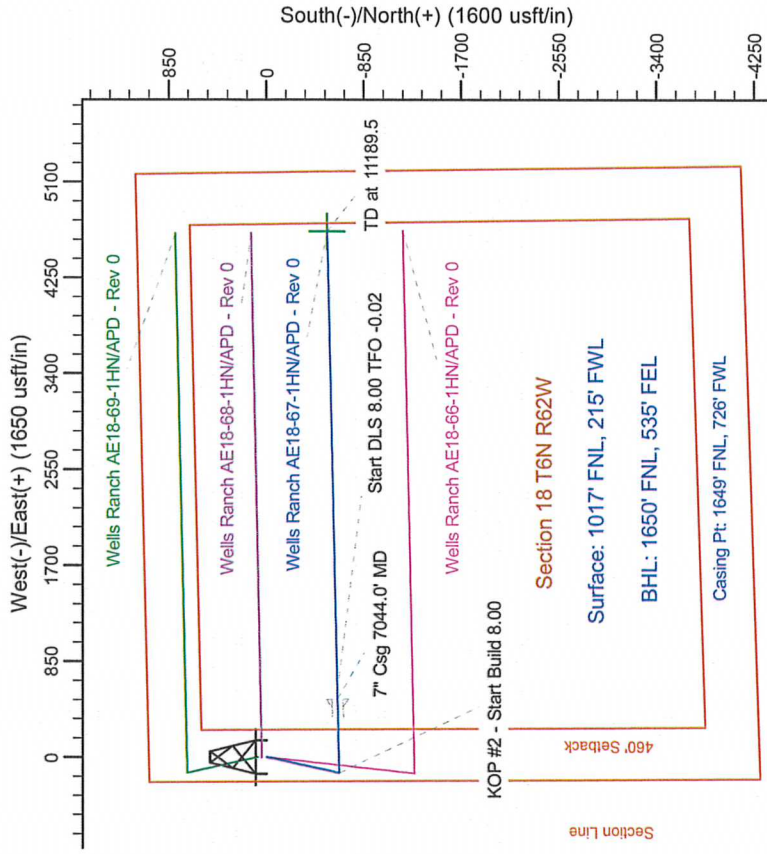
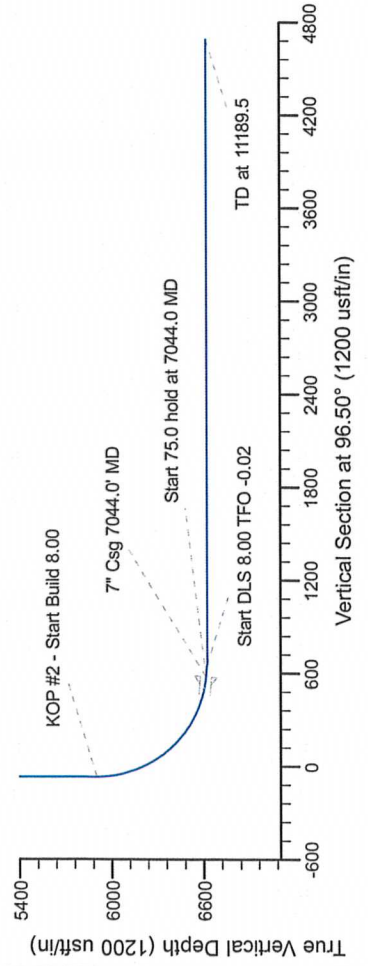
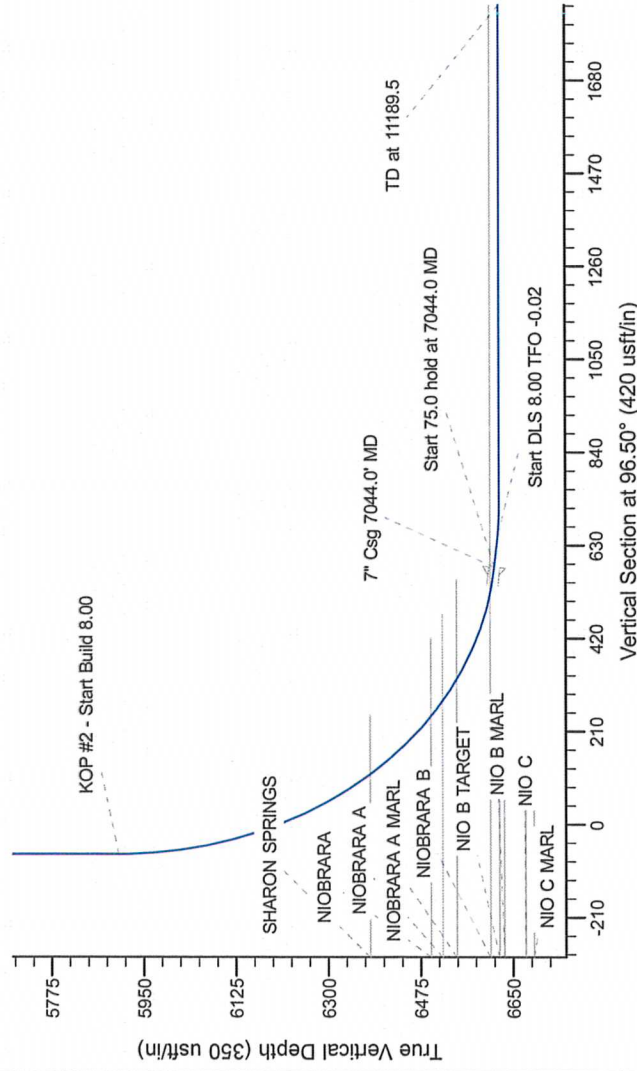
Project: Wattenberg Field
Site: AE (Sec. 18-T6N-R62W) Weld County, CO
Well: Wells Ranch AE18-67-1HN
Wellbore: Original Drilling
Design: APD - Rev 0

Northern Region Drilling

Geodetic System: US State Plane 1983
Datum: North American Datum 1983
Ellipsoid: GRS 1980
Zone: Colorado Northern Zone
System Datum: Mean Sea Level

SECTION DETAILS

Sec	MD	Inc	Azi	TVD	+NI-S	+E/-W	Dleg	TFace	VFace	Target
1	0.0	0.0	0.0	0.0	0.0	0.0	0.0	0.0	0.0	
2	2000.0	0.0	0.0	2000.0	0.0	0.0	0.0	0.0	0.0	
3	2607.3	15.18	192.47	2600.2	-78.1	-17.3	2.50	192.47	-8.3	
4	4472.0	15.18	192.47	4399.8	-554.9	-122.7	0.00	0.00	-59.1	
5	5079.2	0.00	0.00	5000.0	-633.0	-140.0	2.50	180.00	-67.4	
6	5981.5	0.00	0.00	5902.3	-633.0	-140.0	0.00	0.00	-67.4	
7	7044.0	85.00	88.78	6615.7	-619.1	513.6	8.00	88.78	580.4	
8	7119.0	95.00	88.78	6622.3	-617.5	588.3	0.00	0.00	654.4	
9	7181.5	90.00	88.78	6625.0	-616.2	650.7	8.00	-0.02	716.3	
10	11189.5	90.00	88.78	6625.0	-530.7	4657.8	0.00	0.00	4688.0	



T
G
M

Azimuths to Grid North
True North: -0.73°
Magnetic North: 7.79°

Magnetic Field
Strength: 53165.1snT
Dip Angle: 67.17°
Date: 3/9/2012
Model: IGRF200510

WELL DETAILS: Wells Ranch AE18-67-1HN			
Northing	Ground Level	Longitude	
1423712.71	4848.0	-104.374560	
Eastings	Latitude		
3313017.36	40.491040		
Plan: APD - Rev 0 (Wells Ranch AE18-67-1HN/Original Drilling)			
Created By: Carrie Willers	Date: 11/53, March 12 2012	Checked:	Date:
Reviewed:	Date:	Approved:	Date: