

Project: Wattenberg Field
Site: AE (Sec.18-T6N-R62W) Weld County, CO
Well: Wells Ranch AE18-68-1HN
Wellbore: Original Drilling
Design: APD - Rev 0

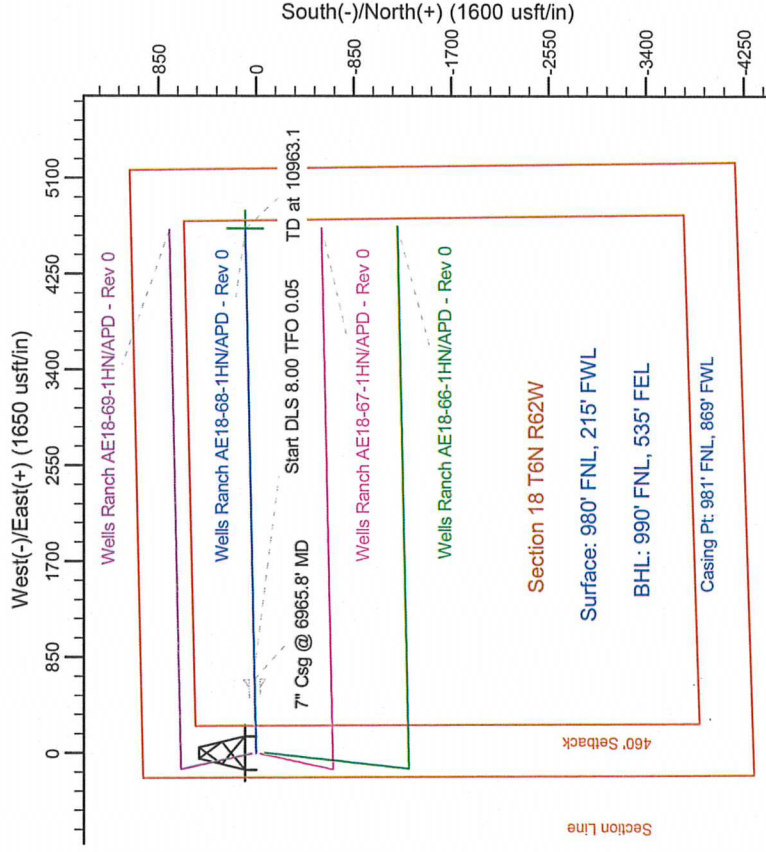
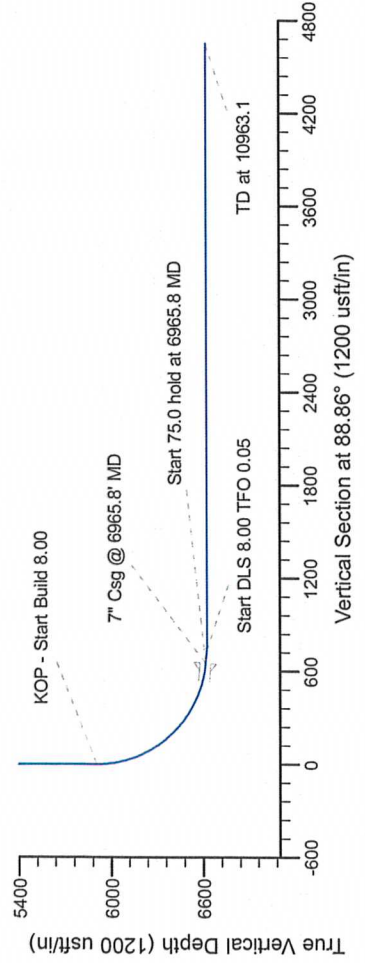
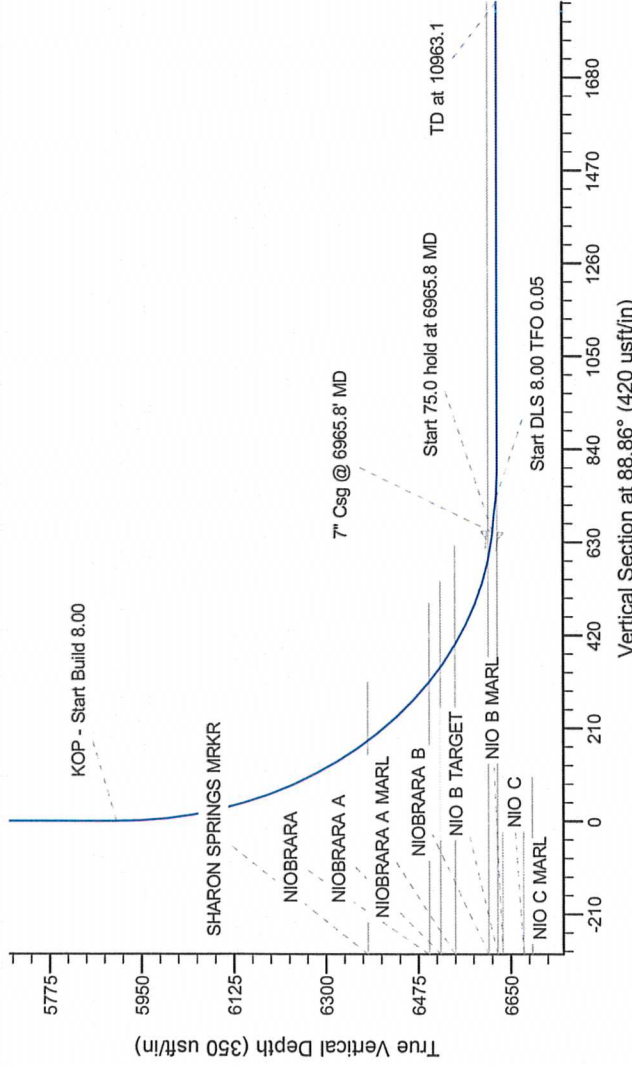
Northern Region Drilling

Geodetic System: US State Plane 1983
Datum: North American Datum 1983
Ellipsoid: GRS 1980
Zone: Colorado Northern Zone
System Datum: Mean Sea Level

SECTION DETAILS

Sec	MD	Inc	Azi	TVD	+N/-S	+E/-W	Dleg	TFace	VSect	Target
1	0.0	0.00	0.00	0.0	0.0	0.0	0.00	0.00	0.0	0.0
2	5903.3	0.00	0.00	5903.3	0.0	0.0	0.00	0.00	0.0	0.0
3	6965.8	85.00	88.86	6616.8	13.0	653.6	8.00	88.86	653.8	653.8
4	7040.8	85.00	88.86	6623.3	14.5	728.3	0.00	0.00	728.5	728.5
5	7103.3	90.00	88.86	6626.0	15.7	790.8	8.00	0.05	790.9	790.9
6	10963.1	90.00	88.86	6626.0	92.3	4649.8	0.00	0.00	4650.7	4650.7

Wells Ranch AE18-68-1HN BHL 6626



T
G
M

Azimuths to Grid North
True North: -0.73°
Magnetic North: 7.79°

Magnetic Field
Strength: 53165.1snT
Dip Angle: 67.17°
Date: 3/9/2012
Model: IGRF200510

WELL DETAILS: Wells Ranch AE18-68-1HN			
Northing	Ground Level	Latitude	Longitude
1423752.78	4849.0	40.491150	-104.374560
Plan: APD - Rev 0 (Wells Ranch AE18-68-1HN/Original Drilling)			
Created By: Carrie Willers		Date: 11/23 March 12 2012	
Checked:		Date:	
Reviewed:		Date:	
Approved:		Date:	