

Project: Wattenberg Field
Site: AE (Sec.18-T6N-R62W) Weld County, CO
Well: Wells Ranch AE18-69-1HN
Wellbore: Original Drilling
Design: APD - Rev 0

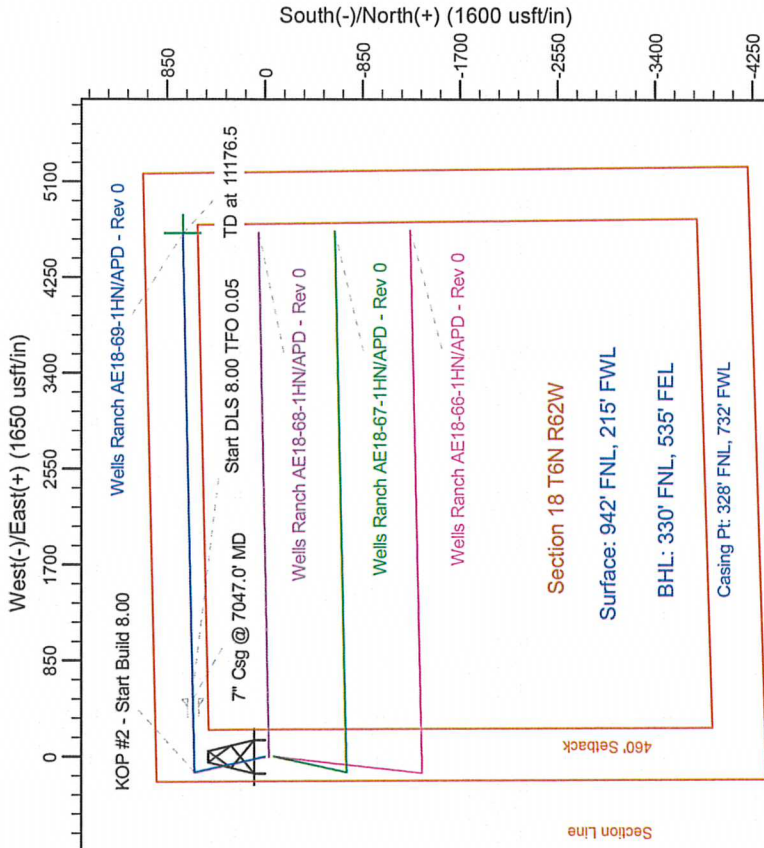
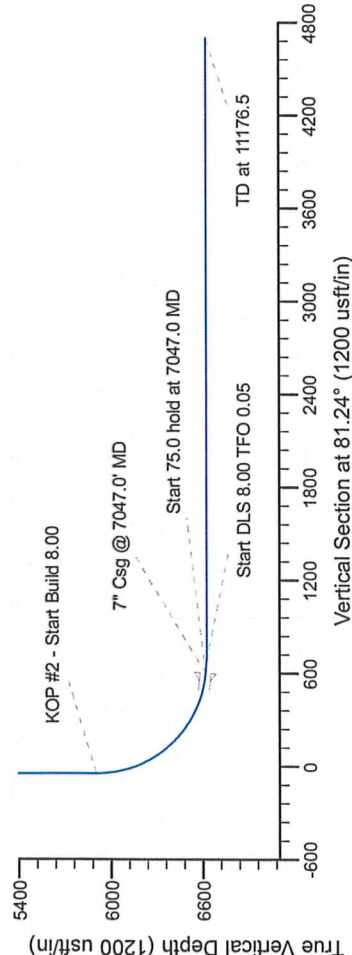
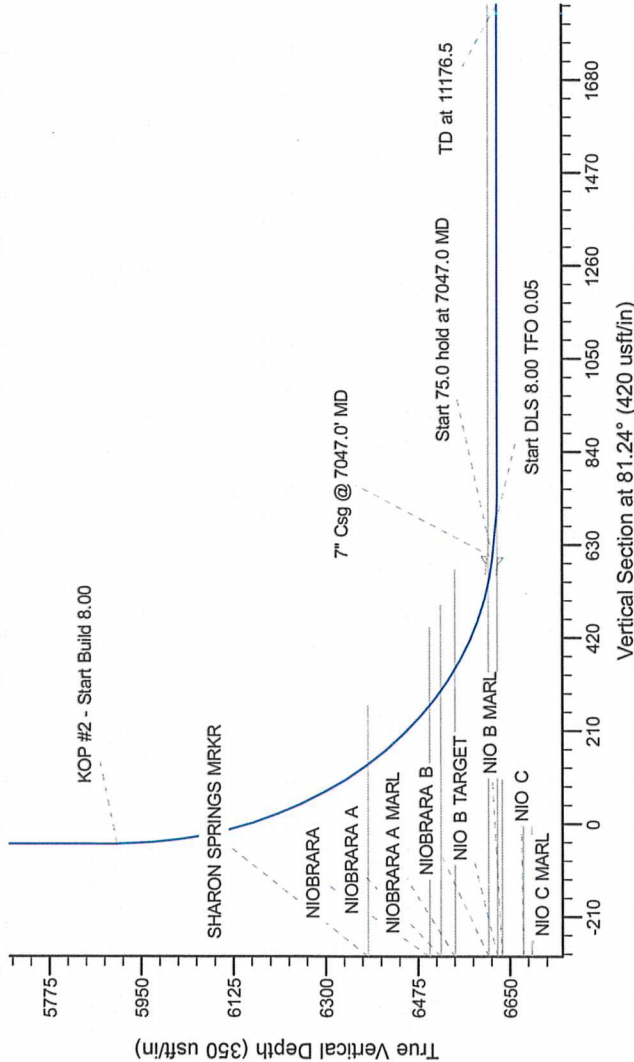
Northern Region Drilling

Geodetic System: US State Plane 1983
Datum: North American Datum 1983
Ellipsoid: GRS 1980
Zone: Colorado Northern Zone
System Datum: Mean Sea Level

SECTION DETAILS

Sec	MD	Inc	Azi	TVD	+N/-S	+E/-W	Dleg	TFace	Vsect	Target
1	0.0	0.00	0.00	0.0	0.0	0.0	0.00	0.00	0.0	0.0
2	1500.0	0.00	0.00	1500.0	0.0	0.0	0.00	0.00	0.0	0.0
3	2143.4	16.08	347.11	2134.9	87.5	-20.0	2.50	347.11	-6.5	-6.5
4	3761.8	0.00	0.00	3690.1	524.5	-120.0	0.00	0.00	-38.7	-38.7
5	4405.2	0.00	0.00	4325.0	612.0	-140.0	2.50	180.00	-45.2	-45.2
6	5984.5	0.00	0.00	5904.3	612.0	-140.0	0.00	0.00	-45.2	-45.2
7	7047.0	85.00	88.76	6617.8	626.1	513.6	8.00	88.76	603.0	603.0
8	7122.0	85.00	88.76	6624.3	627.8	598.3	0.00	0.00	677.0	677.0
9	7184.5	90.00	88.76	6627.0	629.1	650.7	8.00	0.05	738.9	738.9
10	11176.5	90.00	88.76	6627.0	715.2	4641.8	0.00	0.00	4696.5	4696.5

Wells Ranch AE18-69-1HN BHL 330'FNL, 535'FEL



T

G

M

Azimuths to Grid North
True North: -0.73°
Magnetic North: 7.79°

Magnetic Field
Strength: 53165.2snT
Dip Angle: 67.17°
Date: 3/9/2012
Model: IGRF200510

WELL DETAILS: Wells Ranch AE18-69-1HN			
Northing	Easting	Ground Level:	Longitude
1423789.21	3313016.39	4850.0	-104.374560
Plan: APD - Rev 0 (Wells Ranch AE18-69-1HN/Original Drilling)			
Created By: Carrie Willers		Date: 11:06, March 12 2012	
Checked:		Date:	
Reviewed:		Date:	
Approved:		Date:	