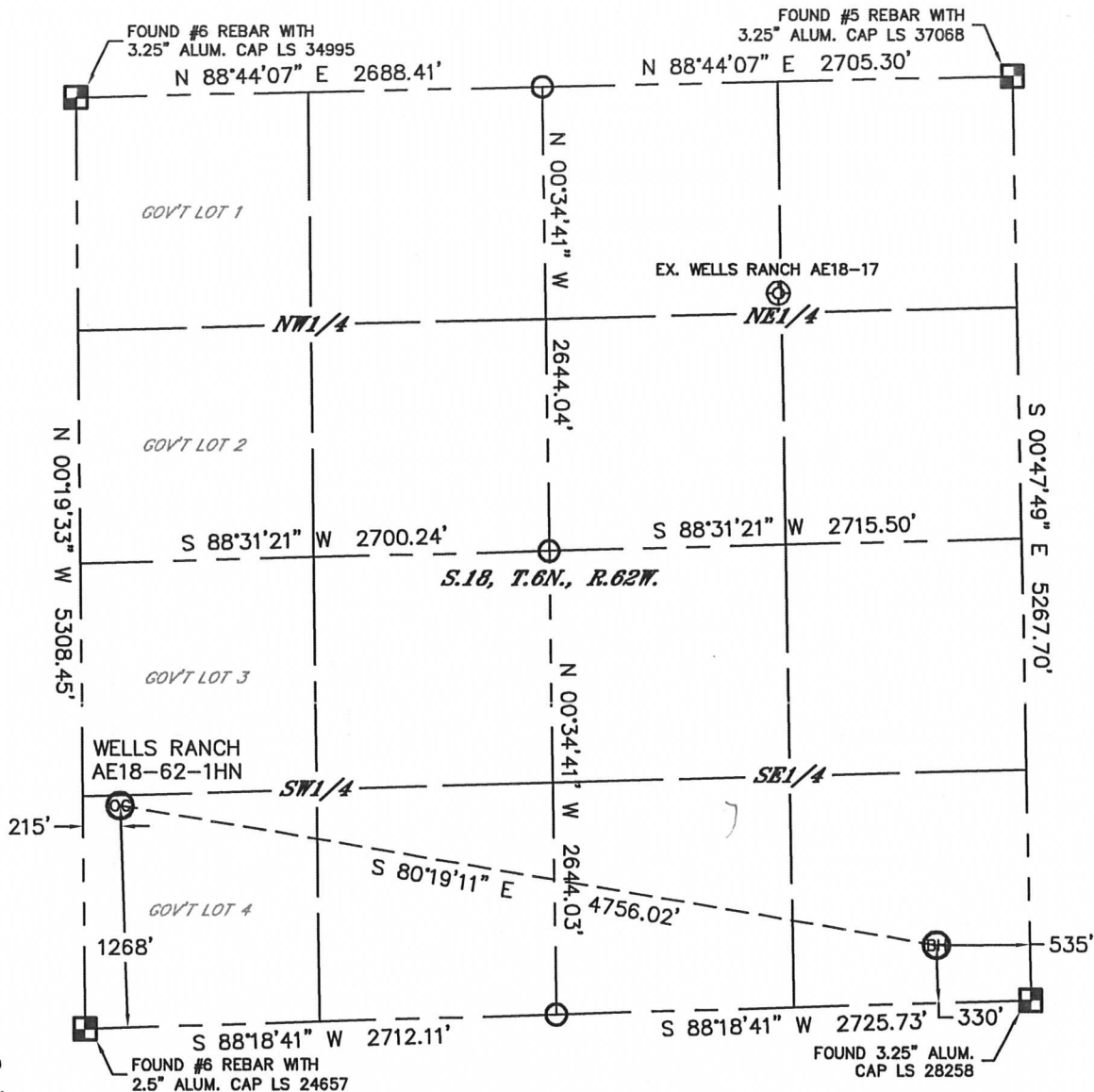


WELL LOCATION CERTIFICATE

SECTION: 18
TOWNSHIP: 6N
RANGE: 62W

THIS MAP DOES NOT REPRESENT A BOUNDARY SURVEY



In accordance with a request from Sean Casper with Noble Energy Inc. Lat40°, Inc. has determined the surface location of the WELLS RANCH AE18-62-1HN to be 1268' from the SOUTH line and 215' from the WEST line and the bottom hole to be 330' from the SOUTH line and 535' from the EAST line as measured at right angles from the section lines of Section 18, Township 6 North, Range 62 West of the Sixth Principal Meridian, County of Weld, State of Colorado.

I hereby state that this Well Location Certificate was prepared by me, or under my direct supervision, that the fieldwork was completed on 2/17/2012, for and on behalf of Noble Energy Inc. That this is not a Land Survey Plat or an Improvement Survey Plat, and that it is not to be relied upon for establishment of fence, building, or other future Improvement lines.

NOTE:

- 1) Bearings shown are Grid Bearings of the Colorado State Plane Coordinate System, North Zone, North American Datum 1983/2007. The lineal dimensions as contained herein are based upon the "U.S. Survey Foot."
- 2) Ground elevations are based on an observed GPS elevation (NAVD 1988 DATUM).
- 3) NEAREST EXISTING WELL WITHIN SECTION: WELLS RANCH AE18-17, 4791'
- 4) IMPROVEMENTS: See LOCATION DRAWING for all visible Improvements within 400' of disturbed area.
- 5) SURFACE USE: RANGELAND
- 6) INSTRUMENT OPERATOR: ADAM KELLY

NOTE

According to Colorado law, you must commence any legal action based upon any defect in this W.L.C. within three years after you discover such defect. In no event, may any action based upon any defect in this survey be commenced more than ten years after the date of the certificate shown hereon. (13-80-105 C.R.S.)

LEGEND

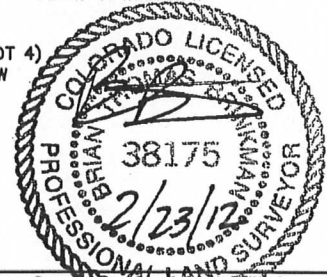
- = ALIQUOT MONUMENT AS DESCRIBED
- = CALCULATED POSITION

SURFACE LOCATION

LAT: 40.48275°N
LONG: 104.37484°W
PDOP: 1.5
ELEV: 4831'
1/4, 1/4: SW1/4SW1/4 (GOV'T LOT 4)
NEAREST PROPERTY LINE: 215' W

BOTTOM HOLE

LAT: 40.48039°N
LONG: 104.35782°W

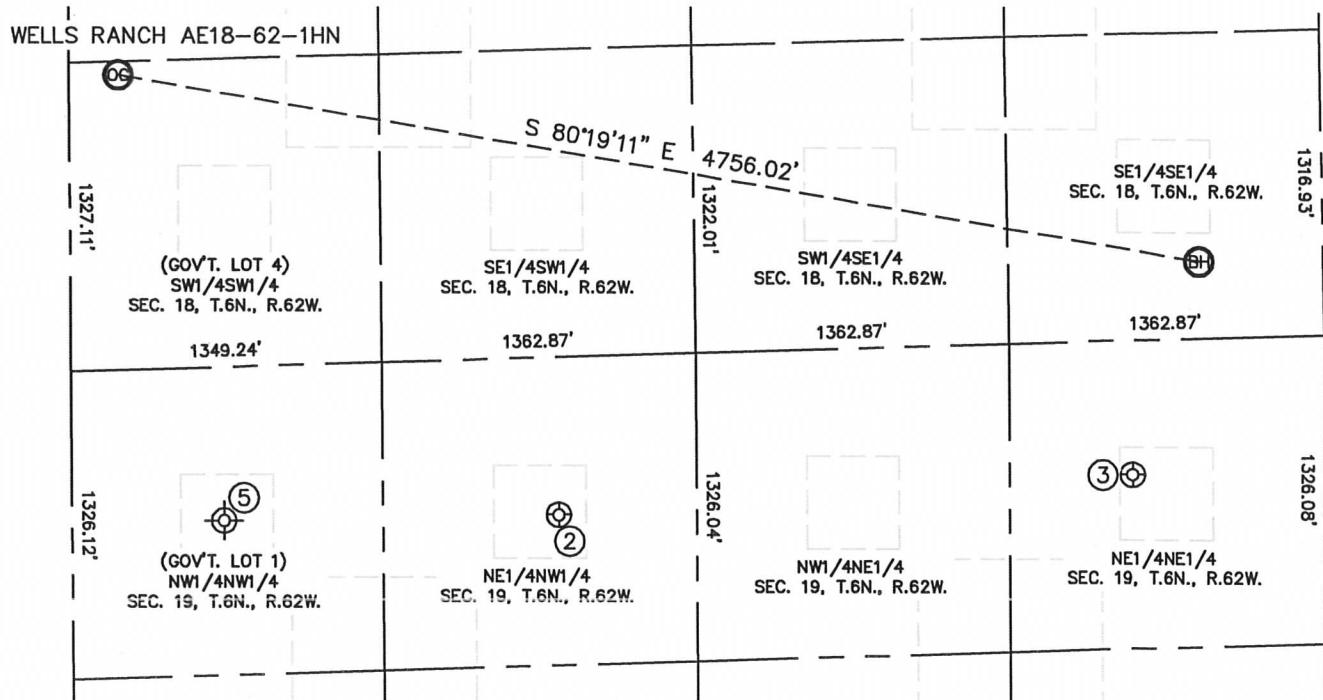


Brian T. Brinkman—On behalf of Lat40°, Inc.
Colorado Licensed Professional Land Surveyor No. 38175
DATE: 2/22/2012
PROJECT#: 2011024

SITE SKETCH

WELLS RANCH AE18-62-1HN

SECTION: 18
TOWNSHIP: 6N
RANGE: 62W



WELLS RANCH USX AE19-03P
NE1/4NW1/4
678' FNL
2112' FWL
LAT-40.47750N
LONG-104.36787W
PDOP: 2.7
ELEV: 4824'

WELLS RANCH USX AE19-01P
NE1/4NE1/4
577' FNL
827' FEL
LAT-40.47789°N
LONG-104.35890°W
PDOP:1.4
ELEV: 4836'

CHAMPLIN AMOCO A 1 #310
(PLUGGED & ABANDONED)
NW1/4NW1/4 (COGCC)
660' FNL (COGCC)
660' FWL (COGCC)
LAT=40.47747°N (COGCC)
LONG=104.37306°W (COGCC)
PDOP:N/A
ELEV: 4823' (COGCC)

