
OXY GRAND JUNCTION EBUSINESS

**CC 697-08-19
GRAND VALLEY
Garfield County , Colorado**

**Cement Surface Casing
02-Mar-2012**

Post Job Report

The Road to Excellence Starts with Safety

Sold To #: 344034	Ship To #: 2912569	Quote #:	Sales Order #: 9107600
Customer: OXY GRAND JUNCTION EBUSINESS	Customer Rep: Vallegas, Alex		
Well Name: CC	Well #: 697-08-19	API/UWI #: 05-045-20975	
Field: GRAND VALLEY	City (SAP): PARACHUTE	County/Parish: Garfield	State: Colorado
Lat: N 39.544 deg. OR N 39 deg. 32 min. 36.924 secs.	Long: W 108.246 deg. OR W -109 deg. 45 min. 12.96 secs.		
Contractor: H&P 353	Rig/Platform Name/Num: H&P 353		
Job Purpose: Cement Surface Casing			
Well Type: Development Well	Job Type: Cement Surface Casing		
Sales Person: HIMES, JEFFREY	Srv Supervisor: TRIPLETT, MICHEAL	MBU ID Emp #: 447908	

Job Personnel

HES Emp Name	Exp Hrs	Emp #	HES Emp Name	Exp Hrs	Emp #	HES Emp Name	Exp Hrs	Emp #
BANKS, BRENT A	0.0	371353	NICKLE, RYON	0.0	454759	TRIPLETT, MICHEAL Anthony	0.0	447908
WEAVER, CARLTON Russell	0.0	457698						

Equipment

HES Unit #	Distance-1 way	HES Unit #	Distance-1 way	HES Unit #	Distance-1 way	HES Unit #	Distance-1 way
10248057	120 mile	10867094	120 mile	10872429	120 mile	10897925	120 mile
11360883	120 mile	11583932	120 mile				

Job Hours

Date	On Location Hours	Operating Hours	Date	On Location Hours	Operating Hours	Date	On Location Hours	Operating Hours
TOTAL								

Total is the sum of each column separately

Job

Formation Name	Top	Bottom	Called Out	Date	Time	Time Zone
Formation Depth (MD)			On Location	01 - Mar - 2012	16:00	MST
Form Type		BHST	Job Started	01 - Mar - 2012	21:30	MST
Job depth MD	2666.4 ft	Job Depth TVD	Job Completed	02 - Mar - 2012	02:47	MST
Water Depth		Wk Ht Above Floor	Departed Loc	02 - Mar - 2012	08:00	MST
Perforation Depth (MD)	From	To		02 - Mar - 2012	09:30	MST

Well Data

Description	New / Used	Max pressure psig	Size in	ID in	Weight lbm/ft	Thread	Grade	Top MD ft	Bottom MD ft	Top TVD ft	Bottom TVD ft
-------------	------------	-------------------	---------	-------	---------------	--------	-------	-----------	--------------	------------	---------------

Sales/Rental/3rd Party (HES)

Description	Qty	Qty uom	Depth	Supplier
PLUG,CMTG,TOP,9 5/8,HWE,8.16 MIN/9.06 MA	1	EA		

Tools and Accessories

Type	Size	Qty	Make	Depth	Type	Size	Qty	Make	Depth	Type	Size	Qty	Make
Guide Shoe					Packer					Top Plug			
Float Shoe					Bridge Plug					Bottom Plug			
Float Collar					Retainer					SSR plug set			
Insert Float										Plug Container			
Stage Tool										Centralizers			

Miscellaneous Materials

Gelling Agt	Conc	Surfactant	Conc	Acid Type	Qty	Conc	%
Treatment Fld	Conc	Inhibitor	Conc	Sand Type	Size		Qty

Fluid Data

Stage/Plug #: 1	Fluid #	Stage Type	Fluid Name	Qty	Qty uom	Mixing Density lbm/gal	Yield ft3/sk	Mix Fluid Gal/sk	Rate bbl/min	Total Mix Fluid Gal/sk
-----------------	---------	------------	------------	-----	---------	------------------------	--------------	------------------	--------------	------------------------

Stage/Plug #: 1									
Fluid #	Stage Type	Fluid Name	Qty	Qty uom	Mixing Density lbm/gal	Yield ft ³ /sk	Mix Fluid Gal/sk	Rate bbl/min	Total Mix Fluid Gal/sk
1	Fresh Water Spacer		10.00	bbl	8.33	.0	.0	.0	
2	Gel Water Spacer		20.00	bbl	8.34	.0	.0	.0	
0.25 gal/bbl		LGC-36 UC, BULK (101582749)							
3	Fresh Water Spacer		10.00	bbl	8.33	.0	.0	.0	
4	Lead Cement	VERSACEM (TM) SYSTEM (452010)	1060.0	sacks	12.3	2.33	12.62	.0	12.62
12.62 Gal		FRESH WATER							
5	Tail Cement	VERSACEM (TM) SYSTEM (452010)	160.0	sacks	12.8	2.07	10.67	.0	10.67
10.67 Gal		FRESH WATER							
6	Fresh Water Displacement		202.00	bbl	8.34	.0	.0	.0	
Calculated Values		Pressures		Volumes					
Displacement		Shut In: Instant		Lost Returns		Cement Slurry		Pad	
Top Of Cement		5 Min		Cement Returns		Actual Displacement		Treatment	
Frac Gradient		15 Min		Spacers		Load and Breakdown		Total Job	
Rates									
Circulating		Mixing		Displacement		Avg. Job			
Cement Left In Pipe	Amount	0 ft	Reason	Shoe Joint					
Frac Ring # 1 @	ID	Frac ring # 2 @	ID	Frac Ring # 3 @	ID	Frac Ring # 4 @	ID		
The Information Stated Herein Is Correct				Customer Representative Signature					

The Road to Excellence Starts with Safety

Sold To #: 344034	Ship To #: 2912569	Quote #:	Sales Order #: 9107600
Customer: OXY GRAND JUNCTION EBUSINESS		Customer Rep: Vallegas, Alex	
Well Name: CC	Well #: 697-08-19	API/UWI #: 05-045-20975	
Field: GRAND VALLEY	City (SAP): PARACHUTE	County/Parish: Garfield	State: Colorado
Legal Description:			
Lat: N 39.544 deg. OR N 39 deg. 32 min. 36.924 secs.		Long: W 108.246 deg. OR W -109 deg. 45 min. 12.96 secs.	
Contractor: H&P 353		Rig/Platform Name/Num: H&P 353	
Job Purpose: Cement Surface Casing			Ticket Amount:
Well Type: Development Well		Job Type: Cement Surface Casing	
Sales Person: HIMES, JEFFREY		Srv Supervisor: TRIPLETT, MICHEAL	MBU ID Emp #: 447908

Activity Description	Date/Time	Cht #	Rate bbl/min	Volume bbl		Pressure psig		Comments
				Stage	Total	Tubing	Casing	
Call Out	03/01/2012 16:00							9 5/8 SURFACE, OXY, H&P 353, CC 697- 08-19
Pre-Convoy Safety Meeting	03/01/2012 18:55							ENTIRE CREW, OBSERVE ALL SAFE DRIVING PROCEDURES
Arrive At Loc	03/01/2012 21:30							REQUESTED ON LOCATION AT 20:00 ON 3/1/2012, ARRIVED 1.5 HOURS LATE DUE TO GETTING ROLLED FROM ANOTHER JOB, RIG WAS RUNNING CASING.
Assessment Of Location Safety Meeting	03/01/2012 21:40							REVIEWED EMERGENCY PLAN, ASSESSED WORK AREA AND SPOTTED EQUIPMENT.
Pre-Rig Up Safety Meeting	03/02/2012 00:00							ENTIRE CREW, WALKED THROUGH RIG UP LOOKING FOR HAZARDS.
Rig-Up Equipment	03/02/2012 00:15							1 PICK UP, 1 HT400 PUMP TRUCK, 1 660 BULK CEMENT TRUCK, 2 BULK CEMENT SILOS, 1 BODY LOAD, 1 QUICK LATCH HEAD WITH PLUG.
Pre-Job Safety Meeting	03/02/2012 02:30							ENTIRE CREW, CO REP AND RIG CREW.
Activity Description	Date/Time	Cht	Rate bbl/min	Volume bbl		Pressure psig		Comments

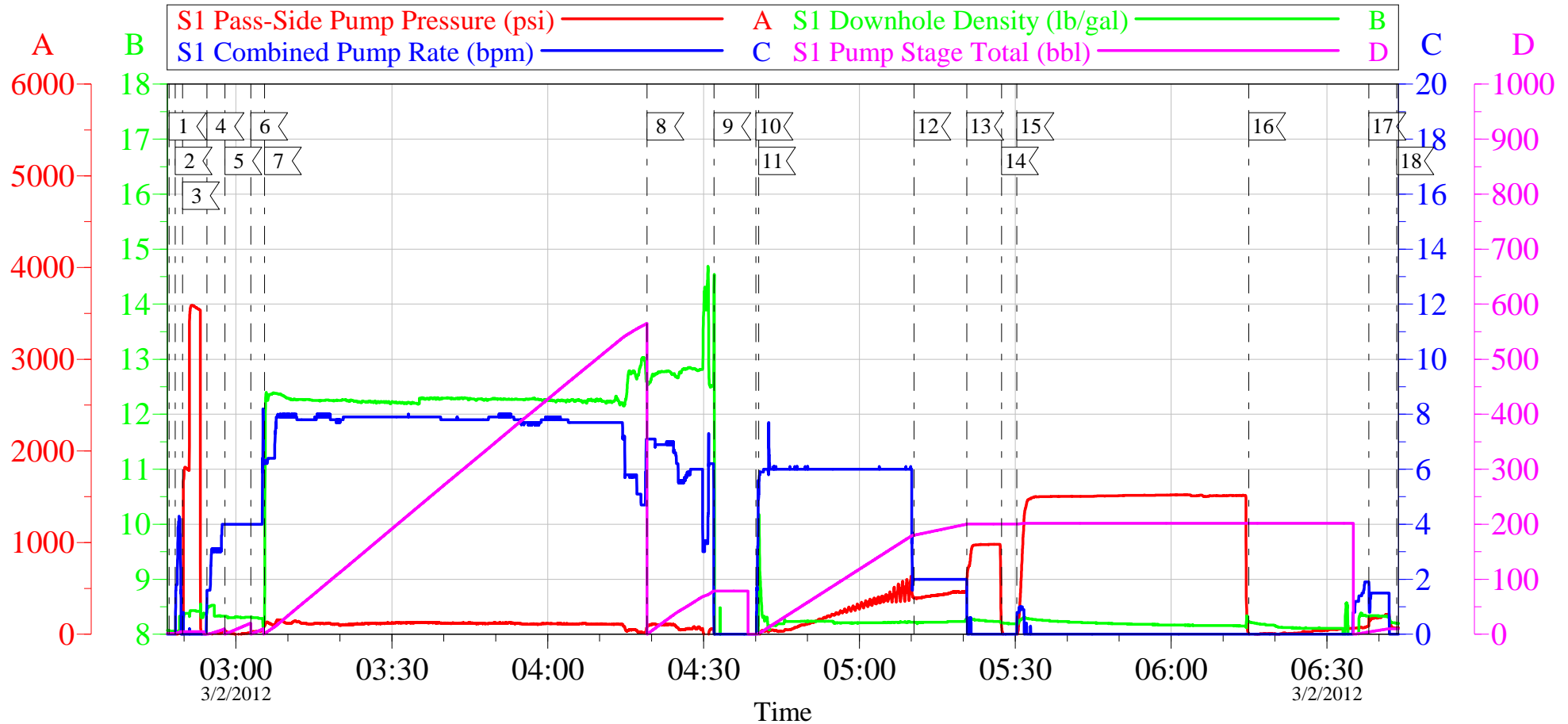
		#		Stage	Total	Tubing	Casing	
Start Job	03/02/2012 02:47							TD 2692' TP 2666.41' SJ 45.88' FC 2620.53' MW 9.2 PPG, 9 5/8 36# CASING IN 14 3/4 HOLE. NO RETURNS PRIOR TO CEMENTING.
Pump Water	03/02/2012 02:48		2	2			42.0	FILL LINES BEFORE TESTING
Pressure Test	03/02/2012 02:49						3000. 0	HELD PRESSURE FOR 2 MIN, PRESSURE HELD, NO LEAKS.
Pump Spacer 1	03/02/2012 02:54		4	10	10		35.0	FRESH WATER, PREMIXED CEMENT TUB AND WEIGHED WITH SCALES.
Pump Spacer 2	03/02/2012 02:57		4	20	30		24.0	GEL SPACER, 20 BBLS WATER WITH 5 GAL LGC.
Pump Spacer 1	03/02/2012 03:02		6	10	40		90.0	FRESH WATER
Pump Lead Cement	03/02/2012 03:05		6	439.9	479.9		125.0	1060 SKS VERSACEM, 12.3 PPG, 2.33 CUFT/SK, 12.62 GAL/SK, 7 BOXES TUFF FIBER MIXED IN DOWNHOLE SIDE OF TUB ON THE FLY IN THE FIRST 100BBLS. PUMP RATE WAS BASED OFF GPM AND NOT ACTUAL RATE.
Pump Tail Cement	03/02/2012 04:19		6	59	538.9		120.0	160 SKS VERSACEM, 12.8 PPG, 2.07 CUFT/SK, 10.67 GAL/SK.
Shutdown	03/02/2012 04:32							HAD NO RETURNS PRIOR TO CEMENTING.
Drop Top Plug	03/02/2012 04:40							VARIIFIED PLUG LEFT CONTAINER.
Pump Displacement	03/02/2012 04:41		6	202.6	741.5		150.0	FRESH WATER
Slow Rate	03/02/2012 05:10		2	192.6	731.5		380.0	SLOWED RATE TO SLOWED TO 2 BPM TO BUMP PLUG WITH 10BBLS LEFT.
Activity Description	Date/Time	Cht #	Rate bbl/ min	Volume bbl Stage Total		Pressure psig Tubing Casing		Comments

Bump Plug	03/02/2012 05:20						475.0	PLUG LANDED AT 202.6 BBLS GONE AT 475 PSI, BUMPED UP TO 975 PSI AND HELD FOR 5 MIN PER CO REP.
Check Floats	03/02/2012 05:27							FLOATS HELD, WHEN RELEASED PRESSURE GOT 1 BBL OF WATER BACK TO TRUCK.
Safety Huddle	03/02/2012 05:28							RIG UP IRON TO CELLAR TO PUMP THROUGH PARASITE.
Pressure Up	03/02/2012 05:30						1500.0	PRESSURE UP TO 1500 PSI TO TEST CASING, HOLD FOR 30 MINUTES.
Release Casing Pressure	03/02/2012 06:14						1514.0	RELEASED PRESSURE AT 1514 PSI, GOOD TEST.
Pump Water	03/02/2012 06:38						107.0	10 BBLS WATER WITH 10 LBS SUAR PUMPED TO CLEAR PARASITE, CAUGHT PRESSURE AT 5.7 BBLS GONE.
Shutdown	03/02/2012 06:43							PARASITE CLEAR.
Safety Huddle	03/02/2012 06:44							RIG UP IRON TO TEST CASING.
Pump Water	03/02/2012 06:44		2	2			40.0	PUMP WATER TO ENSURE LINES ARE CLEAR BEFORE MIXING CEMENT.
Pump Cement	03/02/2012 06:55		3.5	36.8			107.0	TOPOUT CEMENT, MIXED AT 12.5 PPG, 1.97 CUFT/SK, 10.96 GAL/SK.
Pump Water	03/02/2012 07:06		2	1			70.0	PUMP WATER TO CLEAR IRON OF CEMENT.
Activity Description	Date/Time	Cht #	Rate bbl/min	Volume bbl		Pressure psig		Comments
				Stage	Total	Tubing	Casing	

Shutdown	03/02/2012 07:07							GOT CEMENT TO SURFACE WITH 36.8 BBLS GONE, SHUTDOWN FOR 5 MINUTES THEN PUMPED 1.5 BBLS GOT CEMENT BACK. WAITED 1 HOUR CHECKED CEMENT TOP AND ONLY FELL 10 FEET. GOT 3 BBLS TO SURFACE. ALSO TOPPED OUT PREVIOUS WELL.
End Job	03/02/2012 08:04							OFFLINE CEMENT JOB. NO RETURNS THRU OUT JOB. TOPPED OUT ONCE WITH 36.8 BBLS AND GOT 3 BBLS BACK TO SURFACE.TIME STARTED AT 21:30 ON 3/1/2012 AND END JOB AT 08:00 ON 3/2/2012, 3 ADDITIONAL HOURS ADDED TO TICKET. NO DERRICK CHARGE, 10#'S SUGAR USED.
Post-Job Safety Meeting (Pre Rig-Down)	03/02/2012 08:05							ENTIRE CREW
Rig-Down Equipment	03/02/2012 08:10							
Pre-Convoy Safety Meeting	03/02/2012 09:25							ENTIRE CREW, OBSERVE ALL SAFE DRIVING PROCEDURES
Crew Leave Location	03/02/2012 09:30							THANK YOU FOR USING HALLIBURTON, ERIC STILLSON AND CREW.

OXY - CASCADE CREEK/697-08-19

9 5/8" OFFLINE SURFACE



Local Event Log

1 START JOB	02:47:08	2 FILL LINES	02:48:18	3 PRESSURE TEST	02:49:42
4 START H2O SPACER	02:54:24	5 START GEL SPACER	02:57:52	6 START H2O SPACER	03:02:50
7 START LEAD CEMENT	03:05:29	8 START TAIL CEMENT	04:19:06	9 SHUTDOWN	04:32:00
10 DROP PLUG	04:40:06	11 START DISPLACEMENT	04:40:35	12 SLOWRATE	05:10:30
13 BUMP PLUG	05:20:40	14 CHECK FLOATS	05:27:21	15 START CASING TEST	05:30:19
16 END CASING TEST	06:14:57	17 CLEAR PARASITE	06:38:03	18 END JOB	06:43:27

Customer: OXY
Well Description: CC 697-08-19
Company Rep: ALEX VALLEGAS

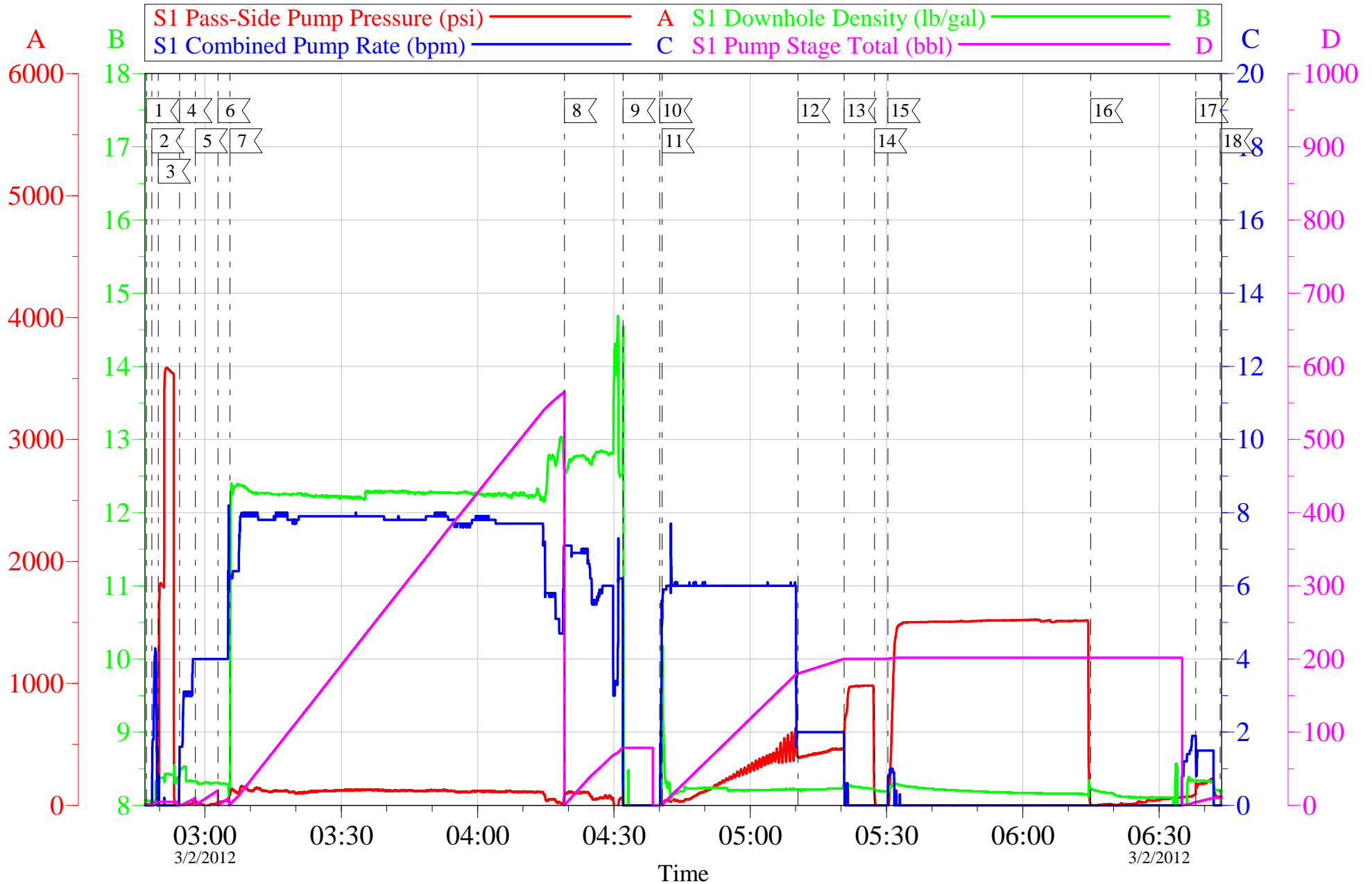
Job Date: 02-Mar-2012
Job Type: SURFACE OFFLINE
Cement Supervisor: MIKE TRIPLET

Sales Order #: 9107600
ADC Used: YES
Elite #7: BRENT BANKS

OptiCem v6.4.9
02-Mar-12 07:44

OXY - CASCADE CREEK/697-08-19

9 5/8" OFFLINE SURFACE

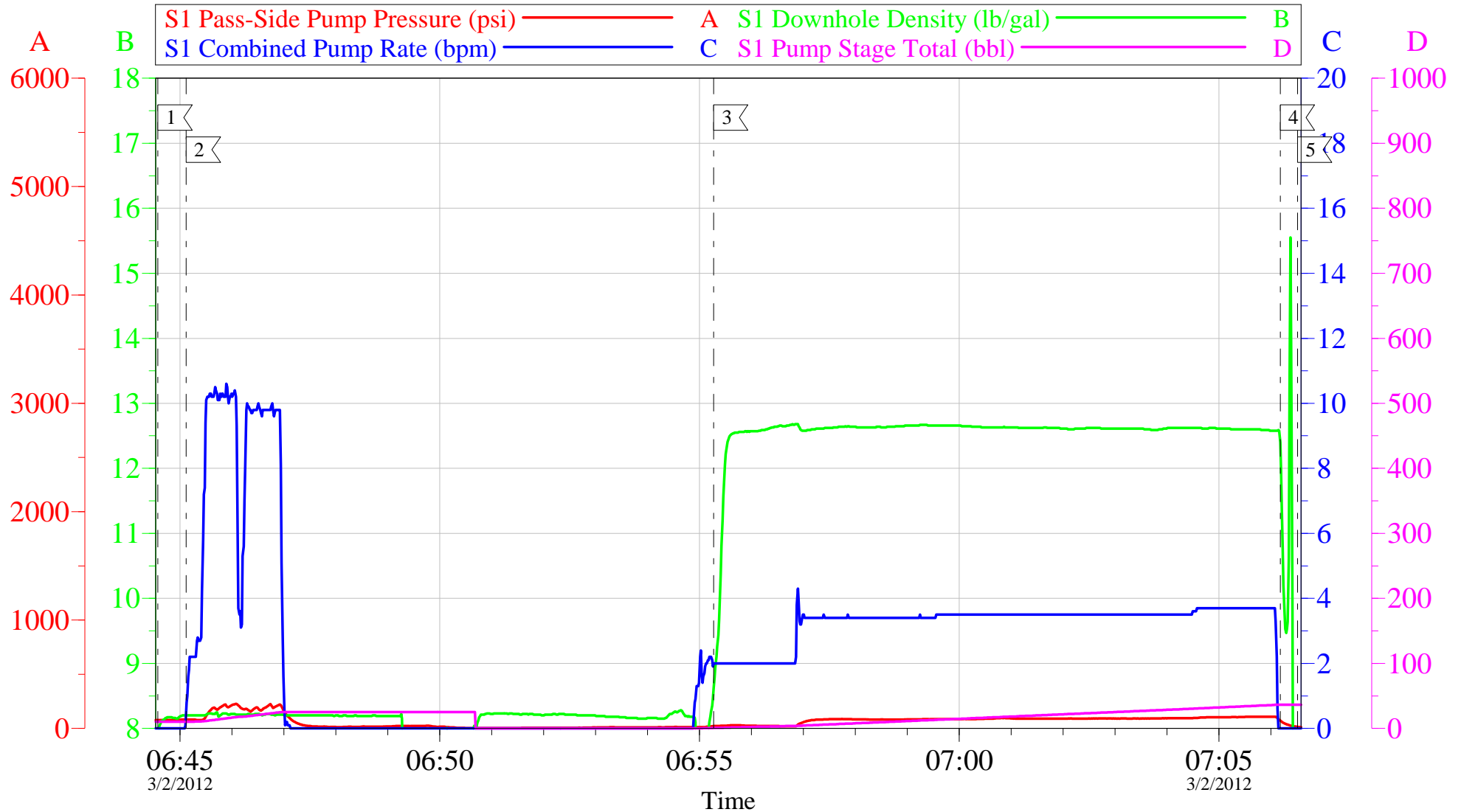


Customer: OXY	Job Date: 02-Mar-2012	Sales Order #: 9107600
Well Description: CC 697-08-19	Job Type: SURFACE OFFLINE	ADC Used: YES
Company Rep: ALEX VALLEGAS	Cement Supervisor: MIKE TRIPLET	Elite #7: BRENT BANKS

OptiCem v6.4.9
02-Mar-12 07:45

OXY - CASCADE CREEK/697-08-19

TOPOUT



Local Event Log

1	START TOPOUT	06:44:35	2	CLEAR LINE	06:45:07	3	PUMP CEMENT	06:55:16
4	SHUTDOWN	07:06:11	5	END JOB	07:06:31			

Customer: OXY
Well Description: CC 697-08-19
Company Rep: ALEX VALLEGAS

Job Date: 02-Mar-2012
Job Type: SURFACE OFFLINE
Cement Supervisor: MIKE TRIPLET

Sales Order #: 9107600
ADC Used: YES
Elite #7: BRENT BANKS

OptiCem v6.4.9
02-Mar-12 07:47

Sales Order #: 9107600	Line Item: 10	Survey Conducted Date: 3/2/2012
Customer: OXY GRAND JUNCTION EBUSINESS		Job Type (BOM): CMT SURFACE CASING BOM
Customer Representative: ALEX VALLEGAS		API / UWI: (leave blank if unknown) 05-045-20975
Well Name: CC		Well Number: 697-08-19
Well Type: Development Well	Well Country: United States of America	
H2S Present:	Well State: Colorado	Well County: Garfield

Dear Customer,

We hope that you were satisfied with the service quality of this job performed by Halliburton. It is the aim of our management and service personnel to deliver equipment and service of a standard unmatched in the service sector of the energy industry.

Please take the time to let us know if our performance met with your satisfaction. Please be as critical as possible to ensure we constantly improve our service. Your comments are of great value to us and are intended for the exclusive use of Halliburton.

CUSTOMER SATISFACTION SURVEY

CATEGORY	CUSTOMER SATISFACTION RESPONSE	
Survey Conducted Date	The date the survey was conducted	3/2/2012
Survey Interviewer	The survey interviewer is the person who initiated the survey.	MICHEAL TRIPLETT (HB15721)
Customer Participation	Did the customer participate in this survey? (Y/N)	Yes
Customer Representative	Enter the Customer representative name	ALEX VALLEGAS
HSE	Was our HSE performance satisfactory? Circle Y or N	Yes
Equipment	Were you satisfied with our Equipment? Circle Y or N	Yes
Personnel	Were you satisfied with our people? Circle Y or N	Yes
Customer Comment	Customer's Comment	GOOD JOB, THANKS

CUSTOMER SIGNATURE

Sales Order #: 9107600	Line Item: 10	Survey Conducted Date: 3/2/2012
Customer: OXY GRAND JUNCTION EBUSINESS		Job Type (BOM): CMT SURFACE CASING BOM
Customer Representative: ALEX VALLEGAS		API / UWI: (leave blank if unknown) 05-045-20975
Well Name: CC		Well Number: 697-08-19
Well Type: Development Well	Well Country: United States of America	
H2S Present:	Well State: Colorado	Well County: Garfield

KEY PERFORMANCE INDICATORS

General	
Survey Conducted Date The date the survey was conducted	3/2/2012

Cementing KPI Survey	
Type of Job Select the type of job. (Cementing or Non-Cementing)	0
Select the Maximum Deviation range for this Job What is the highest deviation for the job you just completed? This may not be the maximum well deviation.	Vertical
Total Operating Time (hours) Total Operating Hours Including Rig-up, Pumping, Rig-down. Enter in decimal format.	8
HSE Incident, Accident, Injury HSE Incident, Accident, Injury. This should be recordable incidents only.	No
Was the job purpose achieved? Was the job delivered correctly as per customer agreed design?	Yes
Operating Hours (Pumping Hours) Total number of hours pumping fluid on this job. Enter in decimal format.	6
Customer Non-Productive Rig Time (hrs) Lost time due to Halliburton in the start, execution, or completion of an ordered service or product, or delays in a follow-on service. Enter in decimal format. 0 if none.	0
Type of Rig Classification Job Was Performed Type Of Rig (classification) Job Was Performed On	Drilling Rig (Portable)
Number Of JSAs Performed Number Of Jsas Performed	7
Number of Unplanned Shutdowns Unplanned shutdown is when injection stops for any period of time.	0
Was this a Primary Cement Job (Yes / No)	Yes

Sales Order #: 9107600	Line Item: 10	Survey Conducted Date: 3/2/2012
Customer: OXY GRAND JUNCTION EBUSINESS		Job Type (BOM): CMT SURFACE CASING BOM
Customer Representative: ALEX VALLEGAS		API / UWI: (leave blank if unknown) 05-045-20975
Well Name: CC		Well Number: 697-08-19
Well Type: Development Well	Well Country: United States of America	
H2S Present:	Well State: Colorado	Well County: Garfield

Primary Cement Job= Casing job, Liner job, or Tie-back job.	
Did We Run Wiper Plugs? Did We Run Top And Bottom Casing Wiper Plugs?	Top
Mixing Density of Job Stayed in Designed Density Range (0-100%) Density Range defined as +/- .20 ppg. Calculation: Total BBLs cement mixed at designed density divided by total BBLs of cement multiplied by 100	95
Was Automated Density Control Used? Was Automated Density Control (ADC) Used ?	Yes
Pump Rate (percent) of Job Stayed At Designed Pump Rate Pump Rate range defined as +/- 1bbl/min. Calculation: Total BBLs of fluid pumped at the designed rate divided by Total BBLs of fluid pumped, multiplied by 100	95
Nbr of Remedial Sqz Jobs Rqd - Competition Number Of Remedial Squeeze Jobs Required After Primary Job Performed By Competition	0
Nbr of Remedial Plug Jobs Rqd - HES Number Of Remedial Plug Jobs Needed After Primary Plug Pumped By HES	0
Nbr of Remedial Sqz Jobs Rqd - HES Number Of Remedial Squeeze Jobs Required After Primary Job Performed By HES	0