
WILLIAMS PRODUCTION RMT INC - EBUS

**PA 431-29
PARACHUTE
Garfield County , Colorado**

Cement Surface Casing
16-Dec-2011

Post Job Summary

The Road to Excellence Starts with Safety

Sold To #: 300721	Ship To #: 2895262	Quote #:	Sales Order #: 9110454
Customer: WILLIAMS PRODUCTION RMT INC - EBUS		Customer Rep: Harrison, Jeremy	
Well Name: PA		Well #: 431-29	API/UWI #: 05-045-20259
Field: PARACHUTE	City (SAP): PARACHUTE	County/Parish: Garfield	State: Colorado
Lat: N 39.504 deg. OR N 39 deg. 30 min. 13.9 secs.		Long: W 108.019 deg. OR W -109 deg. 58 min. 51.15 secs.	
Contractor: NABORS 577		Rig/Platform Name/Num: NAB 577	
Job Purpose: Cement Surface Casing			
Well Type: Development Well		Job Type: Cement Surface Casing	
Sales Person: MAYO, MARK		Srvc Supervisor:	MBU ID Emp #:

Job Personnel

HES Emp Name	Exp Hrs	Emp #	HES Emp Name	Exp Hrs	Emp #	HES Emp Name	Exp Hrs	Emp #
CARTER, ERIC Earl		345598	NICKLE, RYON		454759	PARKER, BRANDON		503646
ROSE, BENJAMIN Keith		487022						

Equipment

HES Unit #	Distance-1 way	HES Unit #	Distance-1 way	HES Unit #	Distance-1 way	HES Unit #	Distance-1 way
10867094	60 mile	10872429	60 mile	10897925	60 mile	11259885	60 mile
11360883	60 mile						

Job Hours

Date	On Location Hours	Operating Hours	Date	On Location Hours	Operating Hours	Date	On Location Hours	Operating Hours

TOTAL Total is the sum of each column separately

Job

Job Times

Formation Name	Formation Depth (MD)	Top	Bottom	Called Out	Date	Time	Time Zone
					16 - Dec - 2011	09:30	MST
Form Type			BHST	On Location	16 - Dec - 2011	14:00	MST
Job depth MD	3096. ft		Job Depth TVD	3096. ft	16 - Dec - 2011	00:00	MST
Water Depth			Wk Ht Above Floor	4. ft	16 - Dec - 2011	02:00	MST
Perforation Depth (MD)	From		To		Departed Loc		

Well Data

Description	New / Used	Max pressure psig	Size in	ID in	Weight lbm/ft	Thread	Grade	Top MD ft	Bottom MD ft	Top TVD ft	Bottom TVD ft
OPEN HOLE				13.5				.	3096.		3096.
SURFACE CASING	Unknown		9.625	9.001	32.3		H-40	.	3088.		

Sales/Rental/3rd Party (HES)

Description	Qty	Qty uom	Depth	Supplier
PLUG,CMTG, TOP, 9 5/8, HWE, 8.16 MIN/9.06 MA	1	EA		

Tools and Accessories

Type	Size	Qty	Make	Depth	Type	Size	Qty	Make	Depth	Type	Size	Qty	Make
Guide Shoe					Packer					Top Plug			
Float Shoe					Bridge Plug					Bottom Plug			
Float Collar					Retainer					SSR plug set			
Insert Float										Plug Container			
Stage Tool										Centralizers			

Miscellaneous Materials

Gelling Agt	Conc	Surfactant	Conc	Acid Type	Qty	Conc %
Treatment Fld	Conc	Inhibitor	Conc	Sand Type	Size	Qty

Fluid Data

Stage/Plug #: 1

Fluid #	Stage Type	Fluid Name	Qty	Qty uom	Mixing Density lbm/gal	Yield ft ³ /sk	Mix Fluid Gal/sk	Rate bbl/min	Total Mix Fluid Gal/sk
1	Fresh Water		20.00	bbl	8.33	.0	.0	.0	
2	Lead Cement	VERSACEM (TM) SYSTEM (452010)	540.0	sacks	12.3	2.38	13.75		13.75
3	Tail Cement	VERSACEM (TM) SYSTEM (452010)	160.0	sacks	12.8	2.11	11.75		11.75
4	Displacement Fluid		239.00	bbl	8.34	.0	.0	.0	
Calculated Values		Pressures		Volumes					
Displacement		Shut In: Instant		Lost Returns		Cement Slurry		Pad	
Top Of Cement		5 Min		Cement Returns		Actual Displacement		Treatment	
Frac Gradient		15 Min		Spacers		Load and Breakdown		Total Job	
Rates									
Circulating		Mixing		Displacement		Avg. Job			
Cement Left In Pipe		Amount	42.7 ft	Reason	Shoe Joint				
Frac Ring # 1 @	ID	Frac ring # 2 @	ID	Frac Ring # 3 @	ID	Frac Ring # 4 @	ID		
The Information Stated Herein Is Correct				Customer Representative Signature					

The Road to Excellence Starts with Safety

Sold To #: 300721	Ship To #: 2895262	Quote #:	Sales Order #: 9110454
Customer: WILLIAMS PRODUCTION RMT INC - EBUS		Customer Rep: Harrison, Jeremy	
Well Name: PA		Well #: 431-29	API/UWI #: 05-045-20259
Field: PARACHUTE	City (SAP): PARACHUTE	County/Parish: Garfield	State: Colorado
Legal Description:			
Lat: N 39.504 deg. OR N 39 deg. 30 min. 13.9 secs.		Long: W 108.019 deg. OR W -109 deg. 58 min. 51.15 secs.	
Contractor: NABORS 577		Rig/Platform Name/Num: NAB 577	
Job Purpose: Cement Surface Casing			Ticket Amount:
Well Type: Development Well		Job Type: Cement Surface Casing	
Sales Person: MAYO, MARK		Srvc Supervisor:	MBU ID Emp #:

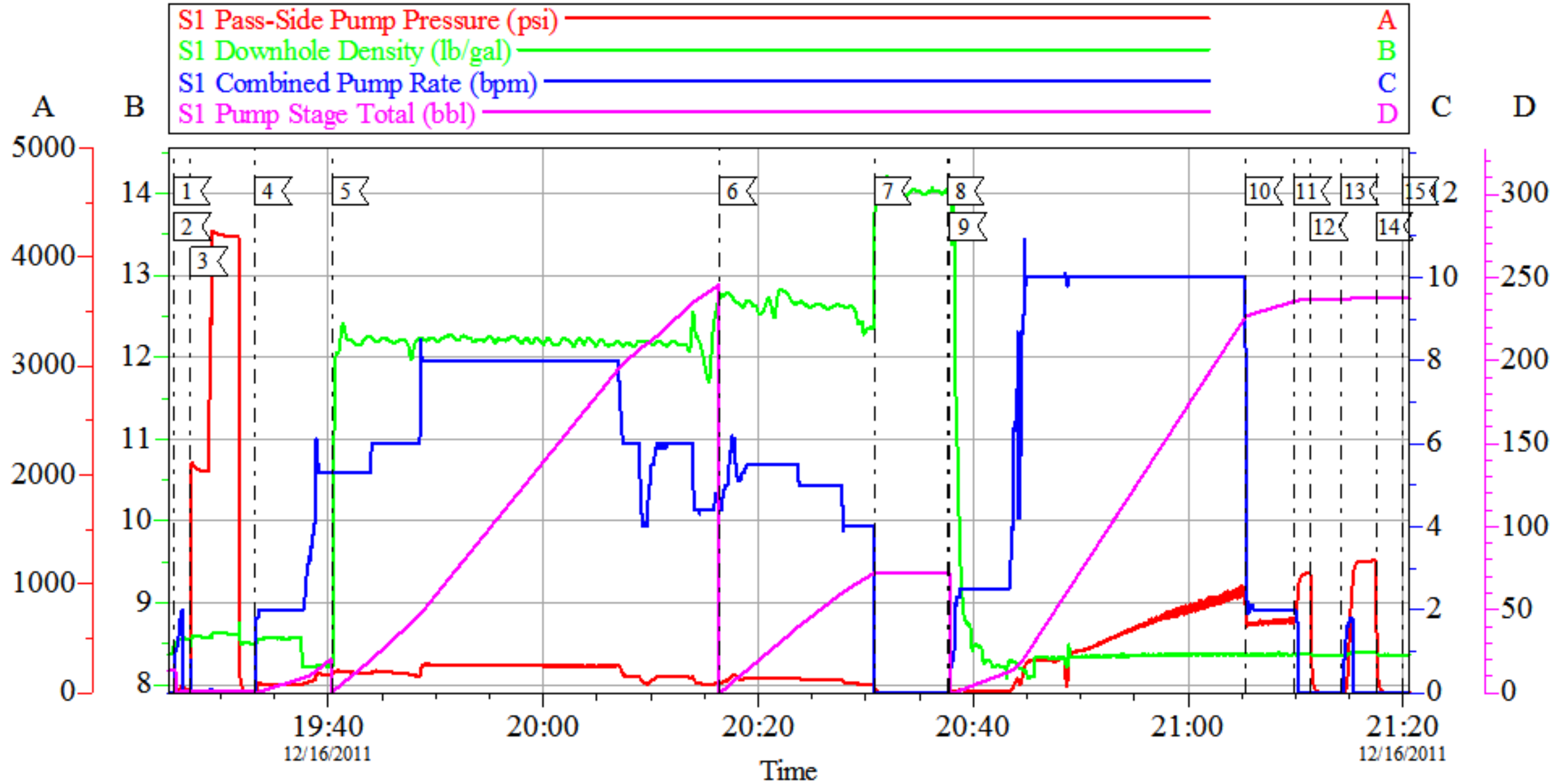
Activity Description	Date/Time	Cht #	Rate bbl/min	Volume bbl		Pressure psig		Comments
				Stage	Total	Tubing	Casing	
Call Out	12/16/2011 09:30							ALL HES CREW MEMBERS
Pre-Convoy Safety Meeting	12/16/2011 12:45							ALL HES PERSONEL, CHECKED PAPERWORK FOR BULK CEMENT EQUIPMENT, CHECKED PRE-TRIP FOR ALL UNITS LEAVING LOCATION. ALL HES CREW MEMBERS CONFIRMED LOGS UP TO DATE.
Crew Leave Yard	12/16/2011 13:00							
Arrive At Loc	12/16/2011 14:00							RIG RUNNING CASING, SYMOPS W/ 3RD PARTY SNUBBING UNIT TAKING PLACE, CASING DELIVERED TO LOCATION FOR SNUBBING UNIT. HES EQUIPMENT KEPT AT LOWER PAD TO ALLOW OTHER OPERATIONS ROOM TO MANUVER
Assessment Of Location Safety Meeting	12/16/2011 18:00							ALL HES PERSONEL
Rig-Up Equipment	12/16/2011 18:10							
Pre-Job Safety Meeting	12/16/2011 19:10							ALL HES CREW, RIG CREW AND COMPANY REPRESENTATIVE

Activity Description	Date/Time	Cht #	Rate bbl/min	Volume bbl		Pressure psig		Comments
				Stage	Total	Tubing	Casing	
Start Job	12/16/2011 19:25							TD- 9069' TP- 3088' SHOE- 42.77' CASING 9.625" 32.3# H40 OH- 13.5" MUD- 10.0# RIG CIRCULATED FOR 1HR 15 MIN, 9.6 BBLS / MIN, 8 CENTRALIZERS AND 2 TURBULIZERS
Other	12/16/2011 19:25		2	1			53.0	FILL LINES, FRESH WATER
Pressure Test	12/16/2011 19:27							PRESSURED TESTED TO 4228 PSI HELD FOR 3 MIN, PSI FELL TO 4183 PSI.
Pump Spacer 1	12/16/2011 19:33		5.3	20			166.0	FRESH WATER
Pump Lead Cement	12/16/2011 19:40		8	228.8			258.0	540 SKS, 12.3 PPG, 2.38 FT3/ SK, 13.75 GAL/SK
Pump Tail Cement	12/16/2011 20:16		8	60.12			158.0	160 SKS, 12.8 PPG, 2.11 FT3/ SK, 11.75 GAL/SK
Shutdown	12/16/2011 20:30							WASH UP ON TOP OF PLUG PER COMPANY REP
Drop Top Plug	12/16/2011 20:37							COMPANY REP VERIFIED PLUG LAUNCHED
Pump Displacement	12/16/2011 20:37		10	229.6 5			978.0	50# SODIUM BICARBONATE ADDED TO FIRST 10 AND SECOND 10 BBLS OF H2O DISPLACEMENT, REMAINING 219.65 BBLS FRESH WATER
Slow Rate	12/16/2011 21:05		2	10			654.0	
Bump Plug	12/16/2011 21:09						1091. 0	PRESSURED UP ON CASING TO 1091 PSI
Check Floats	12/16/2011 21:11							1.25 BBL RETURNED, PER COMPANY REP, BUMP PLUG AGAIN
Bump Plug	12/16/2011 21:14						1223. 0	PER COMPANY REP, BUMP PLUG AGAIN TAKING PRESSURE UP TO 1223 PSI, 1.25 BBLS RETURNED
Check Floats	12/16/2011 21:17							FLOATS HELD

Activity Description	Date/Time	Cht #	Rate bbl/min	Volume bbl		Pressure psig		Comments
				Stage	Total	Tubing	Casing	
End Job	12/16/2011 21:19							GOOD CIRCULATION THROUGHOUT JOB, NO PIPE MOVEMENT THROUGHOUT JOB, 30 BBLs GOOD CEMENT TO SURFACE, SPOTTY CEMENT RETURNS @ 170 BBLs INTO DISPLACEMENT
Post-Job Safety Meeting (Pre Rig-Down)	12/16/2011 21:20							ALL HES PERSONEL
Rig-Down Completed	12/16/2011 22:45							
Depart Location Safety Meeting	12/16/2011 22:50							ALL HES PERSONEL
Crew Leave Location	12/16/2011 23:00							THANK YOU FOR CHOOSING HALLIBURTON, RYON NICKLE AND CREW

WILLIAMS - PA 431-29

SURFACE



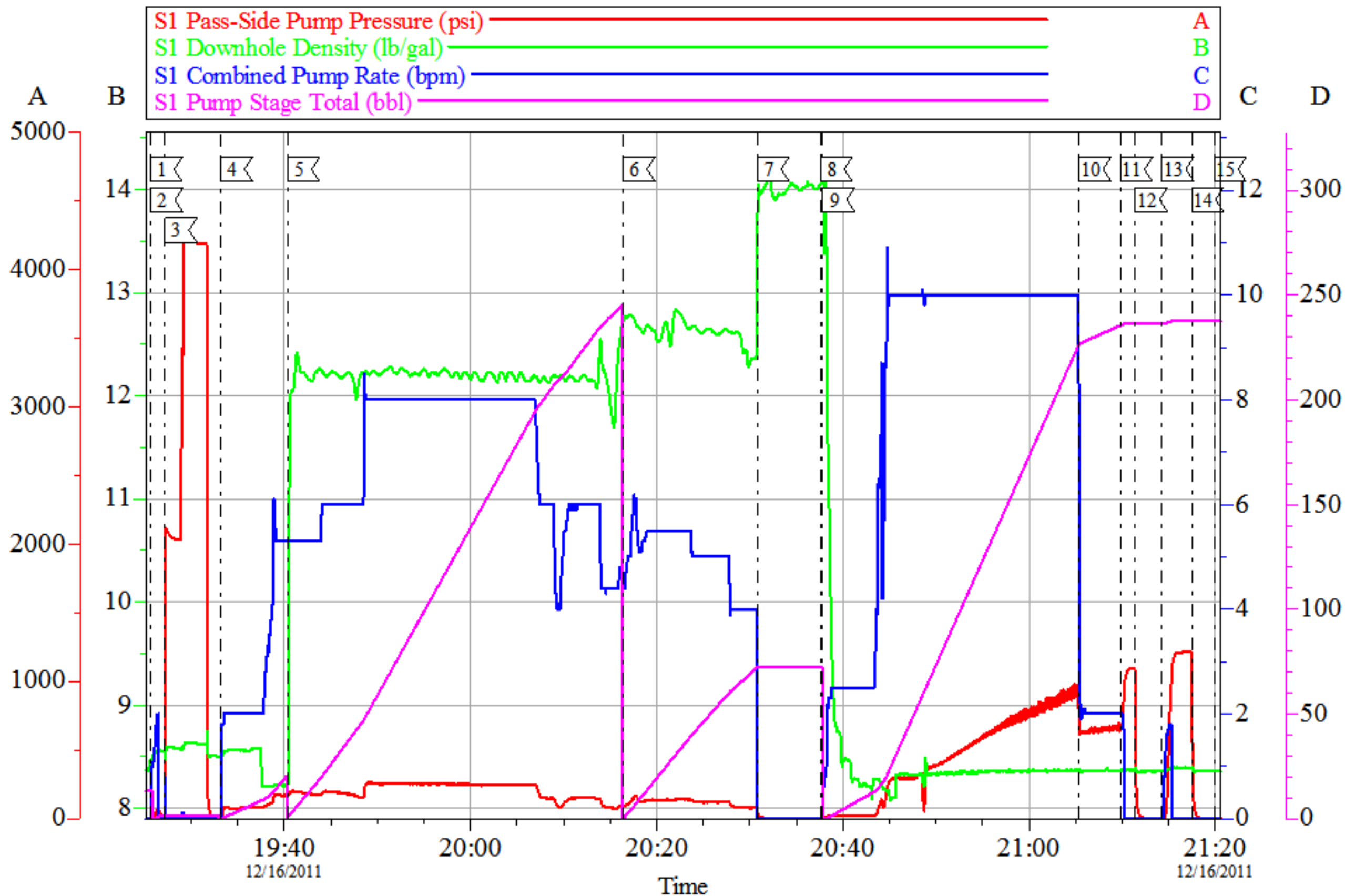
Customer: WILLIAMS PRODUCTION RMT INC - EBUS
 Well Description: PA 431-29
 Company Rep: JEREMY HARRISON

Job Date: 16-Dec-2011
 Job Type: SURFACE
 Cement Supervisor: RYON NICKLE

Sales Order #: 9110454
 ADC Used: YES
 Elite # / Operator: #7 / BENROSE

WILLIAMS - PA 431-29

SURFACE



Customer: WILLIAMS PRODUCTION RMT INC - EBUS	Job Date: 16-Dec-2011	Sales Order #: 9110454
Well Description: PA 431-29	Job Type: SURFACE	ADC Used: YES
Company Rep: JEREMY HARRISON	Cement Supervisor: RYON NICKLE	Elite # / Operator: #7 / BENROSE

HALLIBURTON

Water Analysis Report

Company:	<u>WILLIAMS</u>	Date:	<u>12/16/2011</u>
Submitted by:	<u>RYON NICKLE</u>	Date Rec.:	<u>12/16/2011</u>
Attention:	<u>LAB</u>	S.O.#	<u>9110454</u>
Lease	<u>NABORS 577</u>	Job Type:	<u>SURFACE</u>
Well #	<u>PA 431-29</u>		

Specific Gravity	<i>MAX</i>	1
pH	<i>8</i>	7
Potassium (K)	<i>5000</i>	200 Mg / L
Hrdness	<i>500</i>	120 Mg / L
Iron (FE2)	<i>300</i>	0 Mg / L
Chlorides (Cl)	<i>3000</i>	0 Mg / L
Sulfates (SO ₄)	<i>1500</i>	<200 Mg / L
Temp	<i>40-80</i>	60 Deg
Total Dissolved Solids		480 Mg / L

Respectfully: RYON NICKLE

Title: CEMENTING SUPERVISOR

Location: Grand Junction, CO

NOTICE:

This report is limited to the described sample tested. Any person using or relying on this report agrees that Halliburton shall not be liable for any loss or damage whether due to act or omission resulting from such report.

Sales Order #: 9110454	Line Item: 10	Survey Conducted Date: 12/16/2011
Customer: WILLIAMS PRODUCTION RMT INC - EBUS		Job Type (BOM): CMT SURFACE CASING BOM
Customer Representative: JEREMY HARRISON		API / UWI: (leave blank if unknown) 05-045-20259
Well Name: PA		Well Number: 431-29
Well Type: Development Well	Well Country: United States of America	
H2S Present: No	Well State: Colorado	Well County: Garfield

Dear Customer,

We hope that you were satisfied with the service quality of this job performed by Halliburton. It is the aim of our management and service personnel to deliver equipment and service of a standard unmatched in the service sector of the energy industry.

Please take the time to let us know if our performance met with your satisfaction. Please be as critical as possible to ensure we constantly improve our service. Your comments are of great value to us and are intended for the exclusive use of Halliburton.

CUSTOMER SATISFACTION SURVEY

CATEGORY	CUSTOMER SATISFACTION RESPONSE	
Survey Conducted Date	The date the survey was conducted	12/16/2011
Survey Interviewer	The survey interviewer is the person who initiated the survey.	RYON NICKLE (HB22175)
Customer Participation	Did the customer participate in this survey? (Y/N)	Yes
Customer Representative	Enter the Customer representative name	JEREMY HARRISON
HSE	Was our HSE performance satisfactory? Circle Y or N	Yes
Equipment	Were you satisfied with our Equipment? Circle Y or N	Yes
Personnel	Were you satisfied with our people? Circle Y or N	Yes
Customer Comment	Customer's Comment	

CUSTOMER SIGNATURE

Sales Order #: 9110454	Line Item: 10	Survey Conducted Date: 12/16/2011
Customer: WILLIAMS PRODUCTION RMT INC - EBUS		Job Type (BOM): CMT SURFACE CASING BOM
Customer Representative: JEREMY HARRISON		API / UWI: (leave blank if unknown) 05-045-20259
Well Name: PA		Well Number: 431-29
Well Type: Development Well	Well Country: United States of America	
H2S Present: No	Well State: Colorado	Well County: Garfield

KEY PERFORMANCE INDICATORS

General	
Survey Conducted Date	12/16/2011
The date the survey was conducted	

Cementing KPI Survey	
Type of Job	0
Select the type of job. (Cementing or Non-Cementing)	
Select the Maximum Deviation range for this Job	Vertical
What is the highest deviation for the job you just completed? This may not be the maximum well deviation.	
Total Operating Time (hours)	4
Total Operating Hours Including Rig-up, Pumping, Rig-down. Enter in decimal format.	
HSE Incident, Accident, Injury	No
HSE Incident, Accident, Injury. This should be recordable incidents only.	
Was the job purpose achieved?	Yes
Was the job delivered correctly as per customer agreed design?	
Operating Hours (Pumping Hours)	2
Total number of hours pumping fluid on this job. Enter in decimal format.	
Customer Non-Productive Rig Time (hrs)	0
Lost time due to Halliburton in the start, execution, or completion of an ordered service or product, or delays in a follow-on service. Enter in decimal format. 0 if none.	
Type of Rig Classification Job Was Performed	Drilling Rig (Portable)
Type Of Rig (classification) Job Was Performed On	
Number Of JSAs Performed	6
Number Of Jsas Performed	
Number of Unplanned Shutdowns	0
Unplanned shutdown is when injection stops for any period of time.	
Was this a Primary Cement Job (Yes / No)	Yes

Sales Order #: 9110454	Line Item: 10	Survey Conducted Date: 12/16/2011
Customer: WILLIAMS PRODUCTION RMT INC - EBUS		Job Type (BOM): CMT SURFACE CASING BOM
Customer Representative: JEREMY HARRISON		API / UWI: (leave blank if unknown) 05-045-20259
Well Name: PA		Well Number: 431-29
Well Type: Development Well	Well Country: United States of America	
H2S Present: No	Well State: Colorado	Well County: Garfield

Primary Cement Job= Casing job, Liner job, or Tie-back job.	
Did We Run Wiper Plugs? Did We Run Top And Bottom Casing Wiper Plugs?	Top
Mixing Density of Job Stayed in Designed Density Range (0-100%) Density Range defined as +/- .20 ppg. Calculation: Total BBLs cement mixed at designed density divided by total BBLs of cement multiplied by 100	90
Was Automated Density Control Used? Was Automated Density Control (ADC) Used ?	Yes
Pump Rate (percent) of Job Stayed At Designed Pump Rate Pump Rate range defined as +/- 1bbl/min. Calculation: Total BBLs of fluid pumped at the designed rate divided by Total BBLs of fluid pumped, multiplied by 100	90
Nbr of Remedial Sqz Jobs Rqd - Competition Number Of Remedial Squeeze Jobs Required After Primary Job Performed By Competition	0
Nbr of Remedial Plug Jobs Rqd - HES Number Of Remedial Plug Jobs Needed After Primary Plug Pumped By HES	0
Nbr of Remedial Sqz Jobs Rqd - HES Number Of Remedial Squeeze Jobs Required After Primary Job Performed By HES	0