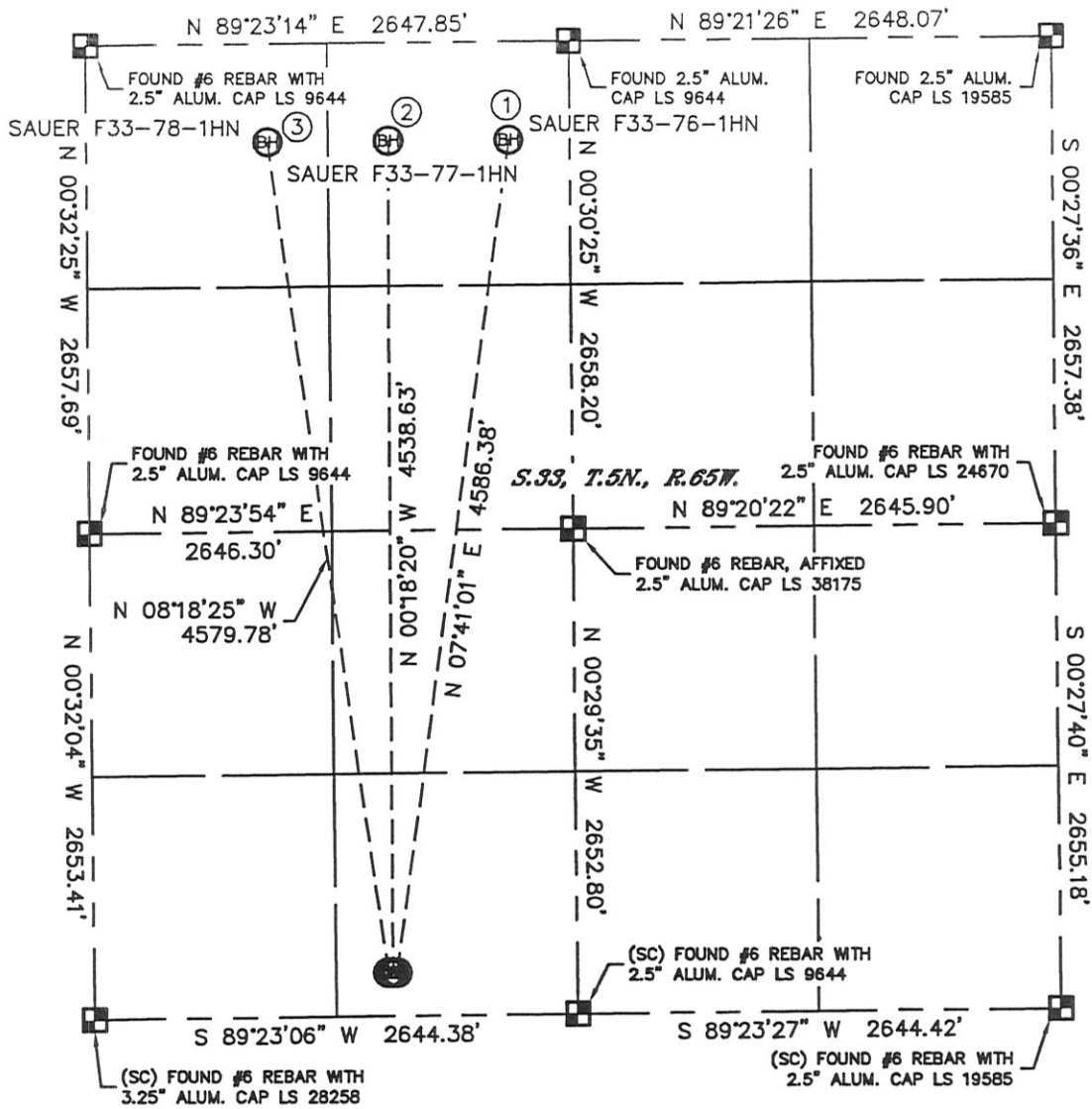


# MULTI-WELL PLAN

SAUER F33-76-1HN, 77-1HN, 78-1HN

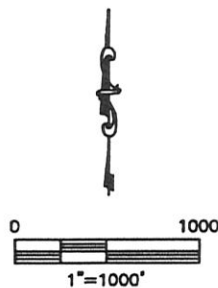
THIS MAP DOES NOT REPRESENT A BOUNDARY SURVEY

SECTION: 33  
TOWNSHIP: 5N  
RANGE: 65W



- |  |  |   |
|--|--|---|
| ①  | ②  | ③   |
| -BOTTOM HOLE-<br>SAUER F33-76-1HN<br>535' FNL<br>2310' FWL<br>LAT-40.36159°N<br>LONG-104.66957°W | -BOTTOM HOLE-<br>SAUER F33-77-1HN<br>535' FNL<br>1650' FWL<br>LAT-40.36159°N<br>LONG-104.67194°W | -BOTTOM HOLE-<br>SAUER F33-78-1HN<br>535' FNL<br>990' FWL<br>LAT-40.36158°N<br>LONG-104.67431°W |

- LEGEND
- = ALIQUOT MONUMENT AS DESCRIBED
  - = CALCULATED POSITION

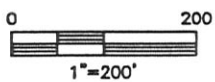
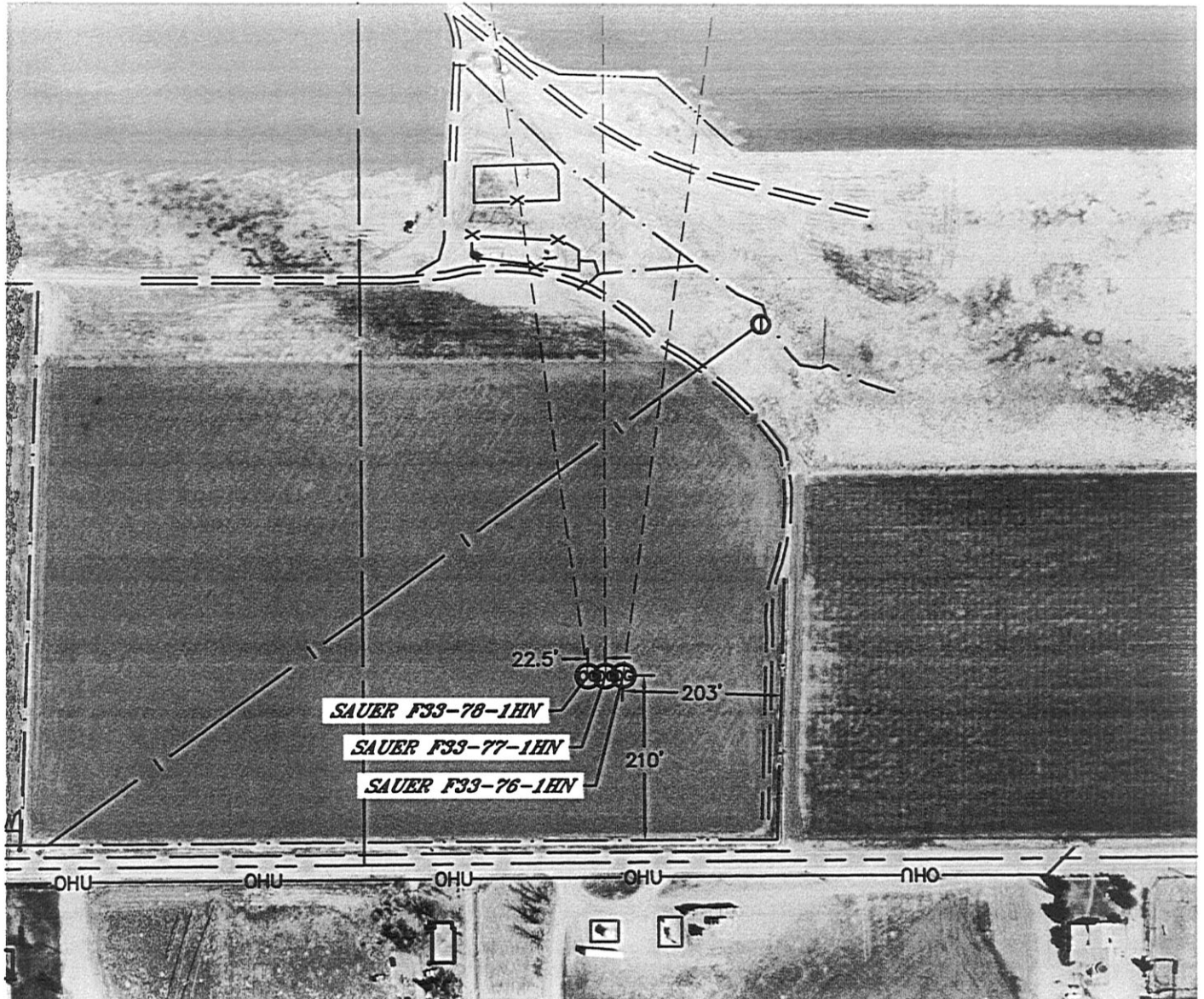


Lat40°, Inc. 1635 Foxtrail Drive, Suite 325 Loveland, CO 970-776-3321

## MULTI-WELL PLAN

SAUER F33-76-1HN, 77-1HN, 78-1HN

SECTION: 33  
TOWNSHIP: 5N  
RANGE: 65W



DATE: rev 01/05/12  
PROJECT#: 2011334