
CHEVRON - MID-CONTINENT EBIZ

SKR 598-36-BV-01
PICEANCE
Garfield County , Colorado

Cement Surface Casing
25-Dec-2008

Job Site Documents

CHEVRON - MID-CONTINENT EBIZ

**SKR 598-36-BV-01
PICEANCE
Garfield County , Colorado**

Cement Surface Casing
25-Dec-2008

Job Site Documents

The Road to Excellence Starts with Safety

| | | | |
|--|-----------------------------------|---------------------------------|------------------------|
| Sold To #: 338668 | Ship To #: 2703521 | Quote #: | Sales Order #: 6368339 |
| Customer: CHEVRON - MID-CONTINENT EBIZ | | Customer Rep: | |
| Well Name: SKR | Well #: 598-36-BV-01 | API/UWI #: | |
| Field: PICEANCE | City (SAP): PARACHUTE | County/Parish: Garfield | State: Colorado |
| Contractor: H&P 316 | Rig/Platform Name/Num: H&P 316 | | |
| Job Purpose: Cement Surface Casing | | | |
| Well Type: Development Well | | Job Type: Cement Surface Casing | |
| Sales Person: HARTLEY, RICHARD | Srvc Supervisor: BRANDON, BRADLEY | MBU ID Emp #: 353157 | |

Job Personnel

| HES Emp Name | Exp Hrs | Emp # | HES Emp Name | Exp Hrs | Emp # | HES Emp Name | Exp Hrs | Emp # |
|-------------------------|---------|--------|------------------|---------|--------|------------------------|---------|--------|
| BRANDON, BRADLEY Vernon | | 353157 | CLARKE, GERALD C | | 441763 | HOEFER, FREEMAN Dennis | | 369666 |
| JONES, CHRISTOPHER E | | 343111 | | | | | | |

Equipment

| HES Unit # | Distance-1 way | HES Unit # | Distance-1 way | HES Unit # | Distance-1 way | HES Unit # | Distance-1 way |
|------------|----------------|------------|----------------|------------|----------------|------------|----------------|
| 10296148C | 120 mile | 10867322 | 120 mile | 10951251 | 120 mile | 10969711 | 120 mile |
| 10998512 | 120 mile | | | | | | |

Job Hours

| Date | On Location Hours | Operating Hours | Date | On Location Hours | Operating Hours | Date | On Location Hours | Operating Hours |
|----------|-------------------|-----------------|--|-------------------|-----------------|------|-------------------|-----------------|
| 12/24/08 | 4 | 0 | 12/25/08 | 8 | 3 | | | |
| TOTAL | | | Total is the sum of each column separately | | | | | |

Job

| Formation Name | Formation Depth (MD) | Top | Bottom | Job Type | Job depth MD | Water Depth | Perforation Depth (MD) | From | To | Job Times | Date | Time | Time Zone |
|----------------|----------------------|-----|--------|----------|--------------|-------------|------------------------|------|----|---------------|-----------------|-------|-----------|
| | | | | BHST | 1042. ft | | | | | Called Out | 24 - Dec - 2008 | 14:00 | MST |
| | | | | | | | | | | On Location | 24 - Dec - 2008 | 20:00 | MST |
| | | | | | | | | | | Job Started | 25 - Dec - 2008 | 06:17 | MST |
| | | | | | | | | | | Job Completed | 25 - Dec - 2008 | 07:13 | MST |
| | | | | | | | | | | Departed Loc | | | |

Well Data

| Description | New / Used | Max pressure psig | Size in | ID in | Weight lbm/ft | Thread | Grade | Top MD ft | Bottom MD ft | Top TVD ft | Bottom TVD ft |
|-------------|------------|-------------------|---------|-------|---------------|--------|-------|-----------|--------------|------------|---------------|
|-------------|------------|-------------------|---------|-------|---------------|--------|-------|-----------|--------------|------------|---------------|

Sales/Rental/3rd Party (HES)

| Description | Qty | Qty uom | Depth | Supplier |
|--|-----|---------|-------|----------|
| PLUG,CMTG,TOP,8 5/8,HWE,7.20 MIN/8.09 MA | 1 | EA | | |

Tools and Accessories

| Type | Size | Qty | Make | Depth | Type | Size | Qty | Make | Type | Size | Qty | Make |
|--------------|------|-----|------|-------|-------------|------|-----|------|----------------|-------|-----|------|
| Guide Shoe | | | | | Packer | | | | Top Plug | 8.625 | 1 | |
| Float Shoe | | | | | Bridge Plug | | | | Bottom Plug | | | |
| Float Collar | | | | | Retainer | | | | SSR plug set | | | |
| Insert Float | | | | | | | | | Plug Container | 8.625 | 1 | |
| Stage Tool | | | | | | | | | Centralizers | | | |

Miscellaneous Materials

| Gelling Agt | Conc | Surfactant | Conc | Acid Type | Qty | Conc % |
|---------------|------|------------|------|-----------|------|--------|
| Treatment Fld | Conc | Inhibitor | Conc | Sand Type | Size | Qty |

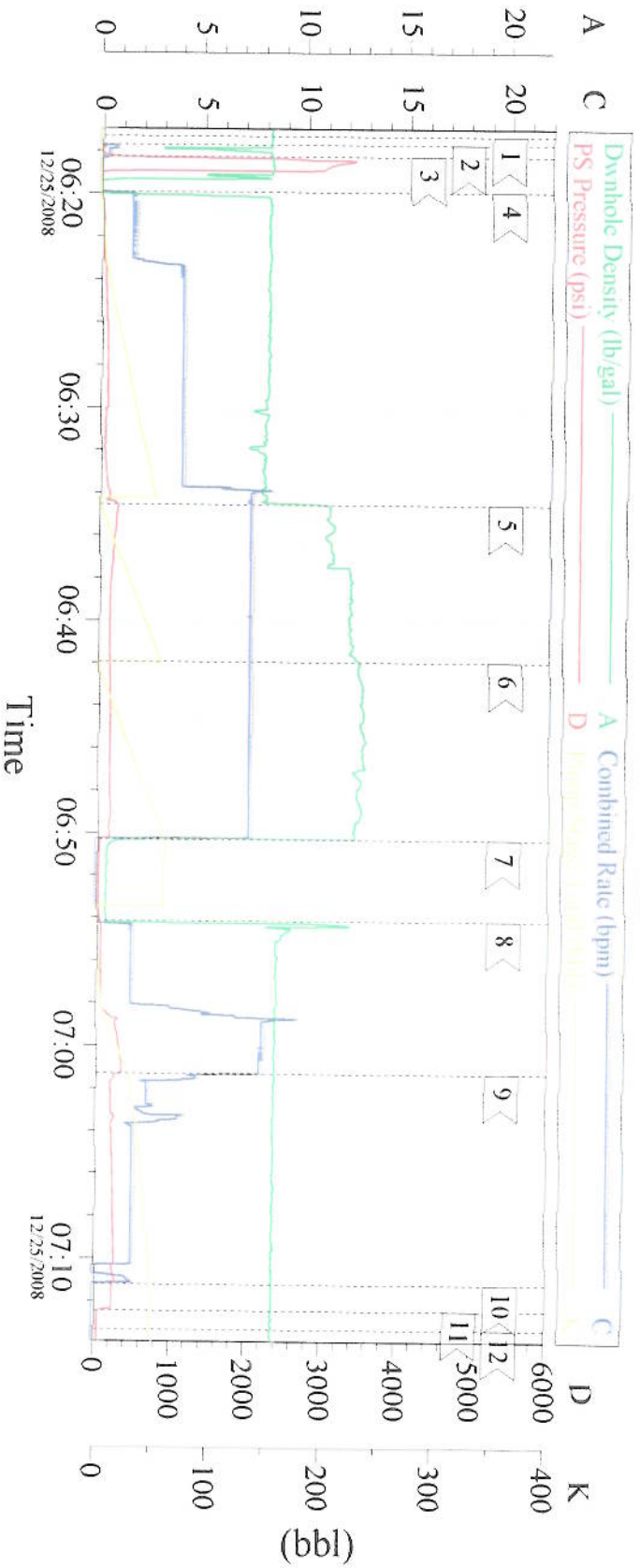
| Fluid Data | | | | | | | | | | |
|--|-------------|-------------------------------|--------|-----------------------------------|------------------------|---------------------------|------------------|--------------|------------------------|--|
| Stage/Plug #: 1 | | | | | | | | | | |
| Fluid # | Stage Type | Fluid Name | Qty | Qty uom | Mixing Density lbm/gal | Yield ft ³ /sk | Mix Fluid Gal/sk | Rate bbl/min | Total Mix Fluid Gal/sk | |
| 1 | H2O SPACER | | 50 | bbl | . | .0 | .0 | .0 | | |
| 2 | Lead Cement | VERSACEM (TM) SYSTEM (452010) | 133 | sacks | 12.3 | 2.38 | 13.75 | | | |
| | 0.432 Gal | FRESH WATER | | | | | | | | |
| 3 | Tail Cement | VERSACEM (TM) SYSTEM (452010) | 149 | sacks | 12.8 | 2.11 | 11.75 | | | |
| | 11.75 Gal | FRESH WATER | | | | | | | | |
| Calculated Values | | Pressures | | Volumes | | | | | | |
| Displacement | 57.02 | Shut In: Instant | | Lost Returns | 0 | Cement Slurry | | Pad | | |
| Top Of Cement | SURFACE | 5 Min | | Cement Returns | 20 | Actual Displacement | 58.5 | Treatment | | |
| Frac Gradient | | 15 Min | | Spacers | 50 | Load and Breakdown | | Total Job | | |
| Rates | | | | | | | | | | |
| Circulating | RIG | Mixing | 7 | Displacement | 8 | Avg. Job | 8 | | | |
| Cement Left In Pipe | Amount | 47.5 ft | Reason | Shoe Joint | | | | | | |
| Frac Ring # 1 @ | ID | Frac ring # 2 @ | ID | Frac Ring # 3 @ | ID | Frac Ring # 4 @ | ID | | | |
| The Information Stated Herein Is Correct | | | | Customer Representative Signature | | | | | | |

The Road to Excellence Starts with Safety

| | | | |
|--|-----------------------|---|------------------------|
| Sold To #: 338668 | Ship To #: 2703521 | Quote #: | Sales Order #: 6368339 |
| Customer: CHEVRON - MID-CONTINENT EBIZ | | Customer Rep: | |
| Well Name: SKR | Well #: 598-36-BV-01 | API/UWI #: | |
| Field: PICEANCE | City (SAP): PARACHUTE | County/Parish: Garfield | State: Colorado |
| Legal Description: | | | |
| Lat: | | Long: | |
| Contractor: H&P 316 | | Rig/Platform Name/Num: H&P 316 | |
| Job Purpose: Cement Surface Casing | | Ticket Amount: | |
| Well Type: Development Well | | Job Type: Cement Surface Casing | |
| Sales Person: HARTLEY, RICHARD | | Srv Supervisor: BRANDON, BRADLEY MBU ID Emp #: 353157 | |

| Activity Description | Date/Time | Cht # | Rate bbl/min | Volume bbl | | Pressure psig | | Comments |
|------------------------|------------------|-------|--------------|------------|-------|---------------|--------|---|
| | | | | Stage | Total | Tubing | Casing | |
| Pre-Job Safety Meeting | 12/25/2008 05:50 | | | | | | | OFFLINE CEMENT JOB |
| Start Job | 12/25/2008 06:17 | | | | | | | |
| Test Lines | 12/25/2008 06:18 | | | | | | 3000.0 | |
| Pump Spacer 1 | 12/25/2008 06:19 | | 7 | | 50 | | 185.0 | 20BBL FRESH; 10DYED POLY FLAKE; 20 FRESH |
| Pump Lead Cement | 12/25/2008 06:34 | | 7 | | 56.4 | | 215.0 | 133SKS 12.3PPG 2.38FT3/SK |
| Pump Tail Cement | 12/25/2008 06:41 | | 7 | | 56 | | 225.0 | 149SKS 12.8PPG 2.11FT3/SK |
| Drop Top Plug | 12/25/2008 06:50 | | | | | | | AWAY |
| Pump Displacement | 12/25/2008 06:54 | | 8 | | 57.02 | | 305.0 | H2O GOOD RETURNS THROUGH JOB |
| Slow Rate | 12/25/2008 07:01 | | 2 | | 47 | | 305.0 | 20BBL CEMENT TO SURFACE |
| Shutdown | 12/25/2008 07:11 | | 2 | | 58.5 | | 300.0 | PLUG DID NOT LAND SHUT DOWN @ 58.5BBL GONE WHICH WAS HALF THE SHOE CAP. |
| Check Floats | 12/25/2008 07:12 | | | | | | 300.0 | HOLDING |
| End Job | 12/25/2008 07:13 | | | | | | | THANK YOU FOR USING HALLIBURTON |

8 5/8 SURFACE



Event Log

| | | | |
|---------------------------|----------|---------------------|----------|
| 1 Start Job | 06:17:18 | 2 FILL LINES | 06:17:43 |
| 3 TEST LINES | 06:18:16 | 4 PUMP SPACER | 06:19:54 |
| 5 PUMP LEAD CEMENT | 06:34:33 | 6 PUMP TAIL CEMENT | 06:41:56 |
| 7 SHUT DOWN DROP TOP PLUG | 06:50:17 | 8 PUMP DISPLACEMENT | 06:54:07 |
| 9 SLOW RATE | 07:01:18 | 10 SHUT DOWN | 07:11:13 |
| 11 CHECK FLAOTS | 07:12:27 | 12 END JOB | 07:13:20 |

Customer: CHEVRON
Well Desc: SURFACE
Operator CRAIG CLARKE

Job Date: 12/25/08
Center: Brad Brandon
Lease & Well # SKR 598-36-BV-01

Ticket #: 6568339
Truck # Elite #1
C.O. Rep. RONALD MOELLER

HALLIBURTON
CentWin v1.7.2
25-Dec-08 07:31