

---

# **CHEVRON - MID-CONTINENT EBIZ**

---

**SKR 598-36-BV-17  
PICEANCE  
Garfield County , Colorado**

**Cement Production Casing**  
**14-Feb-2009**

**Job Site Documents**

## Cementing Job Summary

## The Road to Excellence Starts with Safety

Sold To #: 338668	Ship To #: 2695493	Quote #:	Sales Order #: 6498636
Customer: CHEVRON - MID-CONTINENT EBIZ		Customer Rep: DOHERTY, ED	
Well Name: SKR	Well #: 598-36-BV-17	API/UWI #:	
Field: PICEANCE	City (SAP): PARACHUTE	County/Parish: Garfield	State: Colorado
Contractor: H&P 316	Rig/Platform Name/Num: H&P316		
Job Purpose: Cement Production Casing			
Well Type: Development Well		Job Type: Cement Production Casing	
Sales Person: HARTLEY, RICHARD		Srv Supervisor: ANDREWS, ANTHONY	MBU ID Emp #: 321604

## Job Personnel

HES Emp Name	Exp Hrs	Emp #	HES Emp Name	Exp Hrs	Emp #	HES Emp Name	Exp Hrs	Emp #
ANDREWS, ANTHONY Michael		321604	ANGLESTEIN, TROY Edward WM		436099	JAMISON, PRICE W		229155
SAUTER, MARK A		410526	WHITE, GENE L		445480	WYMS, JUAN P		456693

## Equipment

HES Unit #	Distance-1 way	HES Unit #	Distance-1 way	HES Unit #	Distance-1 way	HES Unit #	Distance-1 way

## Job Hours

Date	On Location Hours	Operating Hours	Date	On Location Hours	Operating Hours	Date	On Location Hours	Operating Hours
2/14/09	6	5	2/14/09	1.75	1			
TOTAL		Total is the sum of each column separately						

## Job

Formation Name	Formation Depth (MD)	Top	Bottom	Form Type	Job depth MD	Water Depth	Perforation Depth (MD)	From	To
				BHST	6910. ft				
					Job Depth TVD	Wk Ht Above Floor			
					6910. ft	4. ft			

## Job Times

Called Out	Date	Time	Time Zone
	14 - Feb - 2009	13:25	MST
On Location	14 - Feb - 2009	18:00	MST
Job Started	14 - Feb - 2009	21:04	MST
Job Completed	14 - Feb - 2009	23:16	MST
Departed Loc	14 - Feb - 2009	01:45	MST

## Well Data

Description	New / Used	Max pressure psig	Size in	ID in	Weight lbm/ft	Thread	Grade	Top MD ft	Bottom MD ft	Top TVD ft	Bottom TVD ft

Sales/Rental/3<sup>rd</sup> Party (HES)

Description	Qty	Qty uom	Depth	Supplier
PLUG,CMTG,TOP,4 1/2,HWE,3.65 MIN/4.14 MA	1	EA		

## Tools and Accessories

Type	Size	Qty	Make	Depth	Type	Size	Qty	Make	Depth	Type	Size	Qty	Make
Guide Shoe					Packer					Top Plug			
Float Shoe					Bridge Plug					Bottom Plug			
Float Collar					Retainer					SSR plug set			
Insert Float										Plug Container			
Stage Tool										Centralizers			

## Miscellaneous Materials

Gelling Agt	Conc	Surfactant	Conc	Acid Type	Qty	Conc	%
Treatment Fld	Conc	Inhibitor	Conc	Sand Type	Size	Qty	

# HALLIBURTON

## Cementing Job Summary

Fluid Data									
Stage/Plug #: 1									
Fluid #	Stage Type	Fluid Name	Qty	Qty uom	Mixing Density lbm/gal	Yield ft <sup>3</sup> /sk	Mix Fluid Gal/sk	Rate bbl/min	Total Mix Fluid Gal/sk
1	DYED SPACER		50	Bbl	8.33	.0	.0	.0	
2	Lead Cement	VARICEM (TM) CEMENT (452009)	350	Sacks	12.8	1.6	7.31		
3	Tail Cement	VARICEM (TM) CEMENT (452009)	750	Sacks	13.2	1.47	6.32		
4	DISPLACEMENT		105.9	Bbl	.	.0	.0	.0	
Calculated Values		Pressures		Volumes					
Displacement	105.9	Shut In: Instant		Lost Returns	N	Cement Slurry	296.1	Pad	
Top Of Cement	SURFACE	5 Min		Cement Returns	0	Actual Displacement	105.9	Treatment	
Frac Gradient		15 Min		Spacers	50	Load and Breakdown		Total Job	452
Rates									
Circulating	RIG	Mixing	6	Displacement	8-2	Avg. Job	6		
Cement Left In Pipe	Amount	49 ft	Reason	Shoe Joint					
Frac Ring # 1 @	ID	Frac ring # 2 @	ID	Frac Ring # 3 @	ID	Frac Ring # 4 @	ID		
The Information Stated Herein Is Correct				Customer Representative Signature					



*The Road to Excellence Starts with Safety*

The Road to Excellence Starts With Safety			
Sold To #: 338668	Ship To #: 2695493	Quote #:	Sales Order #: 6498636
Customer: CHEVRON - MID-CONTINENT EBIZ		Customer Rep: DOHERTY, ED	
Well Name: SKR		Well #: 598-36-BV-17	API/UWI #:
Field: PICEANCE	City (SAP): PARACHUTE	County/Parish: Garfield	State: Colorado
Legal Description:			
Lat: N 0 deg. OR N 0 deg. 0 min. 0 secs.		Long: E 0 deg. OR E 0 deg. 0 min. 0 secs.	
Contractor: H&P 316		Rig/Platform Name/Num: H&P316	
Job Purpose: Cement Production Casing			Ticket Amount:
Well Type: Development Well		Job Type: Cement Production Casing	
Sales Person: HARTLEY, RICHARD		Srvc Supervisor: ANDREWS, ANTHONY	MBU ID Emp #: 321604

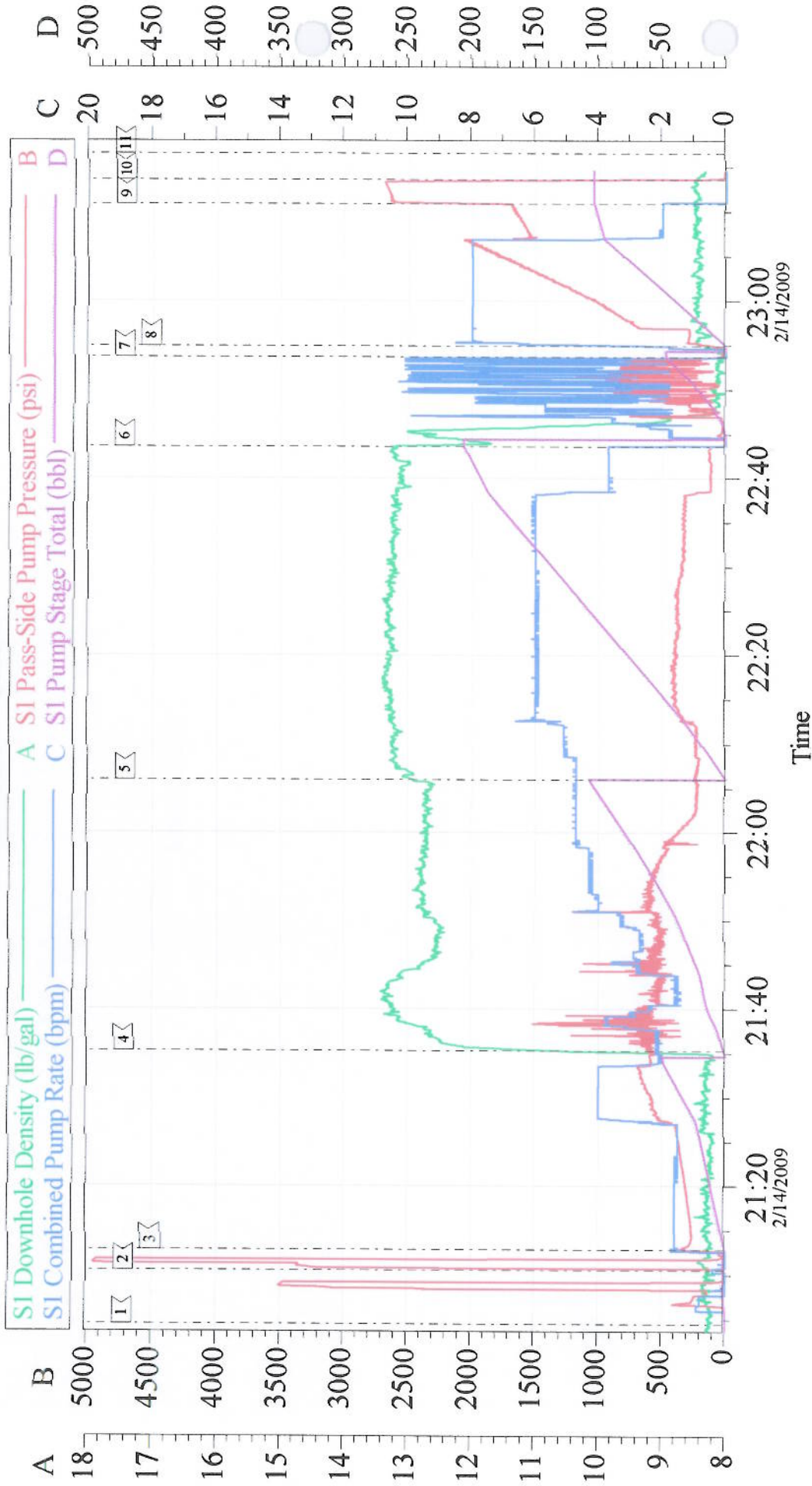
Activity Description	Date/Time	Cht #	Rate bbl/min	Volume bbl		Pressure psig		Comments
				Stage	Total	Tubing	Casing	
Call Out	02/14/2009 13:25							
Pre-Convoy Safety Meeting	02/14/2009 14:30							
Crew Leave Yard	02/14/2009 14:45							
Arrive At Loc	02/14/2009 18:00							
Assessment Of Location Safety Meeting	02/14/2009 18:15							
Other	02/14/2009 18:25							SPOT EQUIPMENT
Pre-Rig Up Safety Meeting	02/14/2009 18:30							
Rig-Up Equipment	02/14/2009 18:35							
Pre-Job Safety Meeting	02/14/2009 20:30							
Start Job	02/14/2009 21:04							TD: 6910 TP: 6879 SJ: 49 MW: 10.2 PPG 4.5" 11.6#/FT CASING
Test Lines	02/14/2009 21:10							4000 PSI TEST
Pump Spacer	02/14/2009 21:12		4	50			350.0	
Pump Lead Cement	02/14/2009 21:35		5	99.7			531.0	350 SKS @ 12.8 PPG 1.6 YLD
Pump Tail Cement	02/14/2009 22:05		6	196.4			235.0	750 SKS @13.2 PPG 1.47 YLD
Shutdown	02/14/2009 22:43							
Clean Lines	02/14/2009 22:45							
Drop Plug	02/14/2009 22:53							

## Cementing Job Log

Activity Description	Date/Time	Cht #	Rate bbl/min	Volume bbl		Pressure psig		Comments
				Stage	Total	Tubing	Casing	
Pump Displacement	02/14/2009 22:54		8		105.9		176.0	
Slow Rate	02/14/2009 23:04		2	95			1675.0	
Bump Plug	02/14/2009 23:10		2	105.9			2600.0	
Check Floats	02/14/2009 23:13							GOOD CIRCULATION THROUGHOUT JOB. PIPE WAS LEFT STATIC THROUGHOUT JOB. PLUG BUMPED AT CALCULATED DISPLACEMENT. FLOATS HELD.
End Job	02/14/2009 23:16							2 ADD HOURS CHARGED.
Post-Job Safety Meeting (Pre Rig-Down)	02/14/2009 23:30							
Rig-Down Equipment	02/14/2009 23:45							
Pre-Convoy Safety Meeting	02/15/2009 01:30							
Crew Leave Location	02/15/2009 01:45							THANK YOU FOR CHOOSING HALLIBURTON CEMENTING OF GRAND JUNCTION, COLORADO ANTHONY ANDREWS AND CREW



# Chevron Production Cement



Customer: CHEVRON - MID-CONTINENT	Job Date: 14-Feb-2009	Sales Order #: 6498636
Well Description: Skinner Ridge 598-36-BV-17	Job Type: Production	ADC Used: Yes
Company Rep: Ed Doherty	Cement Supervisor: Anthony Andrews	Elite #: 6