
CHEVRON - MID-CONTINENT EBIZ

**SKR 598-36-BV-16
PICEANCE
Garfield County , Colorado**

**Cement Production Casing
24-Mar-2009**

Job Site Documents

Cementing Job Summary

The Road to Excellence Starts with Safety

Sold To #: 338668	Ship To #: 2695492	Quote #:	Sales Order #: 6576848
Customer: CHEVRON - MID-CONTINENT EBIZ		Customer Rep: DOHERTY, ED	
Well Name: SKR	Well #: 598-36-BV-16	API/UWI #:	
Field: PICEANCE	City (SAP): PARACHUTE	County/Parish: Garfield	State: Colorado
Contractor: H&P 316	Rig/Platform Name/Num: H&P 316		
Job Purpose: Cement Production Casing			
Well Type: Development Well	Job Type: Cement Production Casing		
Sales Person: DUNNING, DUSTIN	Srvc Supervisor: BROST, ROBERT	MBU ID Emp #: 394382	

Job Personnel

HES Emp Name	Exp Hrs	Emp #	HES Emp Name	Exp Hrs	Emp #	HES Emp Name	Exp Hrs	Emp #
BROST, ROBERT W	12	394382	BROWN, TRAVIS A	12	396848	CREECH, STEVEN Michael	12	420183
lunceford, steven	12	00457512	ross, chuck	12	453128	WILKE, ANDREW J	12	398822

Equipment

HES Unit #	Distance-1 way	HES Unit #	Distance-1 way	HES Unit #	Distance-1 way	HES Unit #	Distance-1 way
10025121	120 mile	10243540C	120 mile	10296148C	120 mile	10829469	120 mile
10988978	120 mile						

Job Hours

Date	On Location Hours	Operating Hours	Date	On Location Hours	Operating Hours	Date	On Location Hours	Operating Hours
3/24/09	8.5	2						
TOTAL								

Total is the sum of each column separately

Job

Formation Name	Formation Depth (MD)	Top	Bottom	Job Times	Date	Time	Time Zone
Form Type			BHST	Called Out	24 - Mar - 2009	10:00	MST
Job depth MD	6560. ft		Job Depth TVD	On Location	24 - Mar - 2009	13:45	MST
Water Depth			Wk Ht Above Floor	Job Started	24 - Mar - 2009	18:45	MST
Perforation Depth (MD)	From	To	4. ft	Job Completed	24 - Mar - 2009	20:14	MST
				Departed Loc	24 - Mar - 2009	22:30	MST

Well Data

Description	New / Used	Max pressure psig	Size In	ID In	Weight lbm/ft	Thread	Grade	Top MD ft	Bottom MD ft	Top TVD ft	Bottom TVD ft
production	New		4.5	4.	11.6		N-80		6532.		

Sales/Rental/3rd Party (HES)

Description	Qty	Qty uom	Depth	Supplier
PLUG,CMTG,TOP,4 1/2,HWE,3.65 MIN/4.14 MA	1	EA		
PORT. DAS W/CEMWIN;ACQUIRE W/HES, ZI	1	JOB		
ADC (AUTO DENSITY CTRL) SYS, /JOB,ZI	1	JOB		

Tools and Accessories

Type	Size	Qty	Make	Depth	Type	Size	Qty	Make	Depth	Type	Size	Qty	Make
Guide Shoe					Packer					Top Plug	4.5	1	
Float Shoe					Bridge Plug					Bottom Plug			
Float Collar					Retainer					SSR plug set			
Insert Float										Plug Container	4.5	1	
Stage Tool										Centralizers			

Miscellaneous Materials

Gelling Agt	Conc	Surfactant	Conc	Acid Type	Qty	Conc	%
Treatment Fld	Conc	Inhibitor	Conc	Sand Type	Size		Qty

Fluid Data									
Stage/Plug #: 1									
Fluid #	Stage Type	Fluid Name	Qty	Qty uom	Mixing Density lbm/gal	Yield ft ³ /sk	Mix Fluid Gal/sk	Rate bbl/min	Total Mix Fluid Gal/sk
1	Dyed Spacer		50.00	bbl	8.33	.0	.0	4	
2	Lead Cement	VARICEM (TM) CEMENT (452009)	390.0	sacks	12.8	1.6	7.31	7.5	
3	Tail Cement	VARICEM (TM) CEMENT (452009)	635.0	sacks	13.2	1.47	6.32	7.5	
4	KCL Displacement		101.00	bbl	8.44	.0	.0	9	
Calculated Values		Pressures		Volumes					
Displacement	101	Shut In: Instant		Lost Returns	No	Cement Slurry	287	Pad	
Top Of Cement	surface	5 Min		Cement Returns	No	Actual Displacement	100.5	Treatment	
Frac Gradient		15 Min		Spacers	50	Load and Breakdown		Total Job	
Rates									
Circulating rig		Mixing	7.5	Displacement	9	Avg. Job	8		
Cement Left In Pipe	Amount	47.4 ft	Reason	Shoe Joint					
Frac Ring # 1 @	ID	Frac ring # 2 @	ID	Frac Ring # 3 @	ID	Frac Ring # 4 @	ID		
The Information Stated Herein Is Correct				Customer Representative Signature					

Cementing Job Log

The Road to Excellence Starts with Safety

Sold To #: 338668	Ship To #: 2695492	Quote #:	Sales Order #: 6576848
Customer: CHEVRON - MID-CONTINENT EBIZ	Customer Rep: DOHERTY, ED		
Well Name: SKR	Well #: 598-36-BV-16	API/UWI #:	
Field: PICEANCE	City (SAP): PARACHUTE	County/Parish: Garfield	State: Colorado
Legal Description:			
Lat: N 0 deg. OR N 0 deg. 0 min. 0 secs.	Long: E 0 deg. OR E 0 deg. 0 min. 0 secs.		
Contractor: H&P 316	Rig/Platform Name/Num: H&P 316		
Job Purpose: Cement Production Casing	Ticket Amount:		
Well Type: Development Well	Job Type: Cement Production Casing		
Sales Person: DUNNING, DUSTIN	Srvc Supervisor: BROST, ROBERT	MBU ID Emp #: 394382	

Activity Description	Date/Time	Cht #	Rate bbl/ min	Volume bbl		Pressure psig		Comments
				Stage	Total	Tubing	Casing	
Call Out	03/24/2009 10:00							elite#1 4 1/2" production 6560td 6532tp 47.4shoe 10.5ppg mud 7 7/8" open hole 11.6ppf N-80 cs
Safety Huddle	03/24/2009 11:30							no cell phones use seatbelts watch following distance
Arrive At Loc	03/24/2009 13:45							look over location looking for haz
Assessment Of Location Safety Meeting	03/24/2009 14:20							walk threw rig up looking for haz
Rig-Up Equipment	03/24/2009 14:30							
Rig-Up Completed	03/24/2009 15:15							rig td at 1730 started ciculation
Safety Meeting - Pre Job	03/24/2009 18:20							attn by rig crew pump crew comp rep
Start Job	03/24/2009 18:45			3			326.0	fill lines fresh water
Pressure Test	03/24/2009 18:47						6400. 0	good test no leaks
Pump Spacer 1	03/24/2009 18:49			50			869.0	red dye and polyflake first 20 bls
Pump Lead Cement	03/24/2009 19:03			111			1100. 0	390sks 12.8ppg 1.6yield 7.31h2o
Pump Tail Cement	03/24/2009 19:20			166			725.0	635sks 13.2ppg 1.47yield 6.32h2o
Shutdown	03/24/2009 19:43							
Clean Lines	03/24/2009 19:44							
Drop Top Plug	03/24/2009 19:55							plug left container
Pump Displacement	03/24/2009 19:56			101			2000. 0	kcl at 1.5 bags per 10 bls slow last ten bls to 2 bls min

Sold To #: 338668

Ship To #: 2695492

Quote #:

Sales Order #:

6576848

SUMMIT Version: 7.20.130

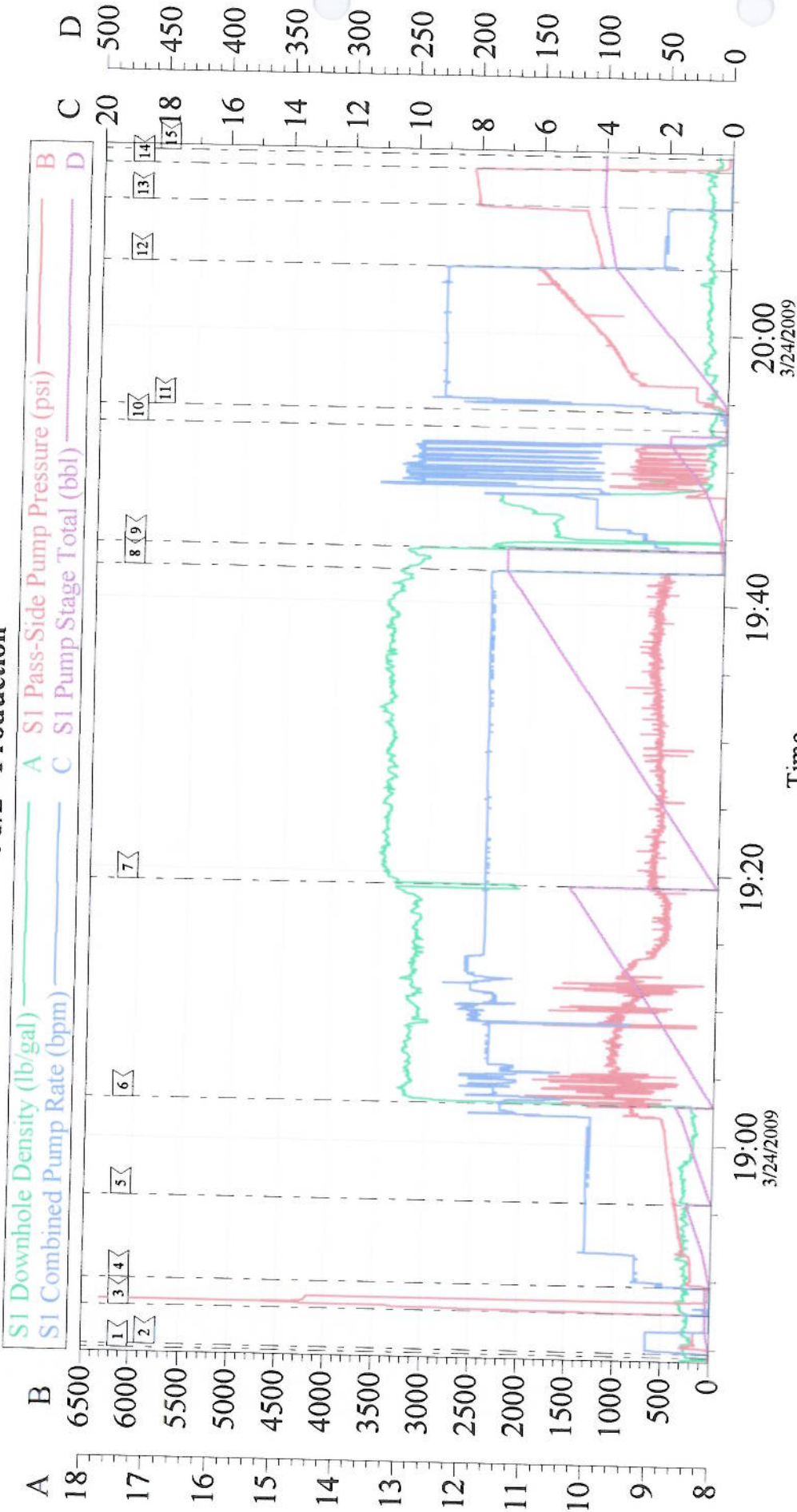
Tuesday, March 24, 2009 08:42:00

Cementing Job Log

Activity Description	Date/Time	Cht #	Rate bbl/ min	Volume bbl		Pressure psig		Comments
				Stage	Total	Tubing	Casing	
Bump Plug	03/24/2009 20:10						1540. 0	took 1000 over psi to land
Check Floats	03/24/2009 20:12						2613. 0	floats held
End Job	03/24/2009 20:14							good circulation during job
Safety Meeting - Pre Rig- Down	03/24/2009 20:30							no cmt to surface. spcr to surface
Safety Meeting - Departing Location	03/24/2009 22:30							thank you Robert Brost and crew

Chevron

4 1/2" Production



Local Event Log	
1 START JOB	18:44:25
2 PRIME LINES	18:44:44
3 TEST LINES	18:47:33
4 PUMP DYED SPACER	18:49:33
5 PUMP H2O SPACER	18:55:40
6 PUMP LEAD CEMENT	19:02:53
7 PUMP TAIL CEMENT	19:19:04
8 SHUT DOWN	19:42:24
9 WASH PUMPS & LINES	19:44:04
10 DROP TOP PLUG	19:53:02
11 START DISPLACEMENT	19:54:18
12 SLOW RATE	20:04:53
13 LAND PLUG	20:13:07
14 CHECK FLOATS/FLOATS HELD	20:12:07
15 END JOB	

Customer: CHEVRON - MID-CONTINENT
Well Description: Skinner Ridge 598-36-BV-16
Company Rep: Elmer Tatum

Job Date: 24-Mar-2009
Job Type: Production
Cement Supervisor: Robert Brost

Sales Order #: 6576848
ADC Used: Yes
Elite #/Operator: #1/Travis Brown