



SUPERIOR
Black Lick, Pa.
Mercer, Pa.
Wooster, Oh.
Cleveland, Ok.
Trinidad, Co.

GAMMA RAY C.C.L.

Company **MERCHANT ENERGY**
Well **RALPH MICHAELS #1**
Field **PEETZ WEST**
County **LOGAN** State **COLORADO**

Company **MERCHANT ENERGY**
Well **RALPH MICHAELS #1**
Field **PEETZ WEST**
County **LOGAN**
State **COLORADO**

Location:	API # :	Other Services
SEC	TWP	RGE
Permanent Datum		Elevation
Log Measured From		K.B. D.F. G.L.
Drilling Measured From		

Date **17-SEPT-2010**

Run Number	ONE
Depth Driller	
Depth Logger	5310
Bottom Logged Interval	5310
Top Log Interval	4500
Open Hole Size	
Type Fluid	
Density / Viscosity	
Max. Recorded Temp.	
Estimated Cement Top	
Time Well Ready	
Time Logger on Bottom	
Equipment Number	0700
Location	45
Recorded By	L. HOBBS
Witnessed By	K. REINHARDT

Borehole Record				Tubing Record			
Run Number	Bit	From	To	Size	Weight	From	To
Casing Record		Size		Wgt/Ft		Top	Bottom
Surface String							
Prot. String							
Production String							
Liner							

<<< Fold Here >>>

All interpretations are opinions based on inferences from electrical or other measurements and we cannot and do not guarantee the accuracy or correctness of any interpretation, and we shall not, except in the case of gross or willful negligence on our part, be liable or responsible for any loss, costs, damages, or expenses incurred or sustained by anyone resulting from any interpretation made by any of our officers, agents or employees. These interpretations are also subject to our general terms and conditions set out in our current Price Schedule.

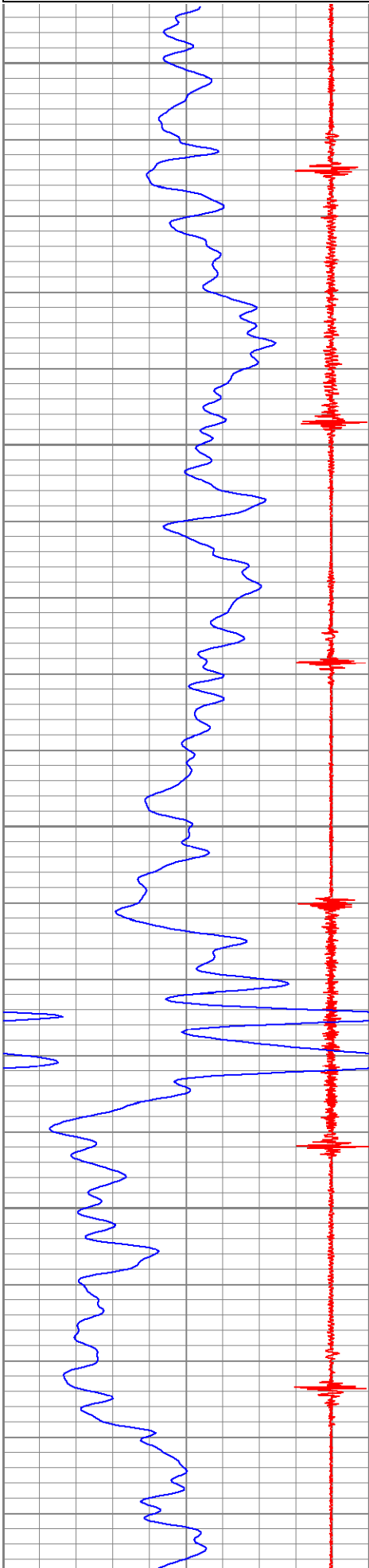
Comments

THIS LOG WAS RAN OFF A 10 FT K.B.

Database File: peetznorth.db
Dataset Pathname: run2/pass1
Presentation Format: gr-ccl
Dataset Creation: Tue Jan 01 00:56:07 2002 by Log Open-Cased 071220
Charted by: Depth in Feet scaled 1:240

18	CCL	-2
0	GR (GAPI)	200

0	GR (GAPI)	1000
---	-----------	------

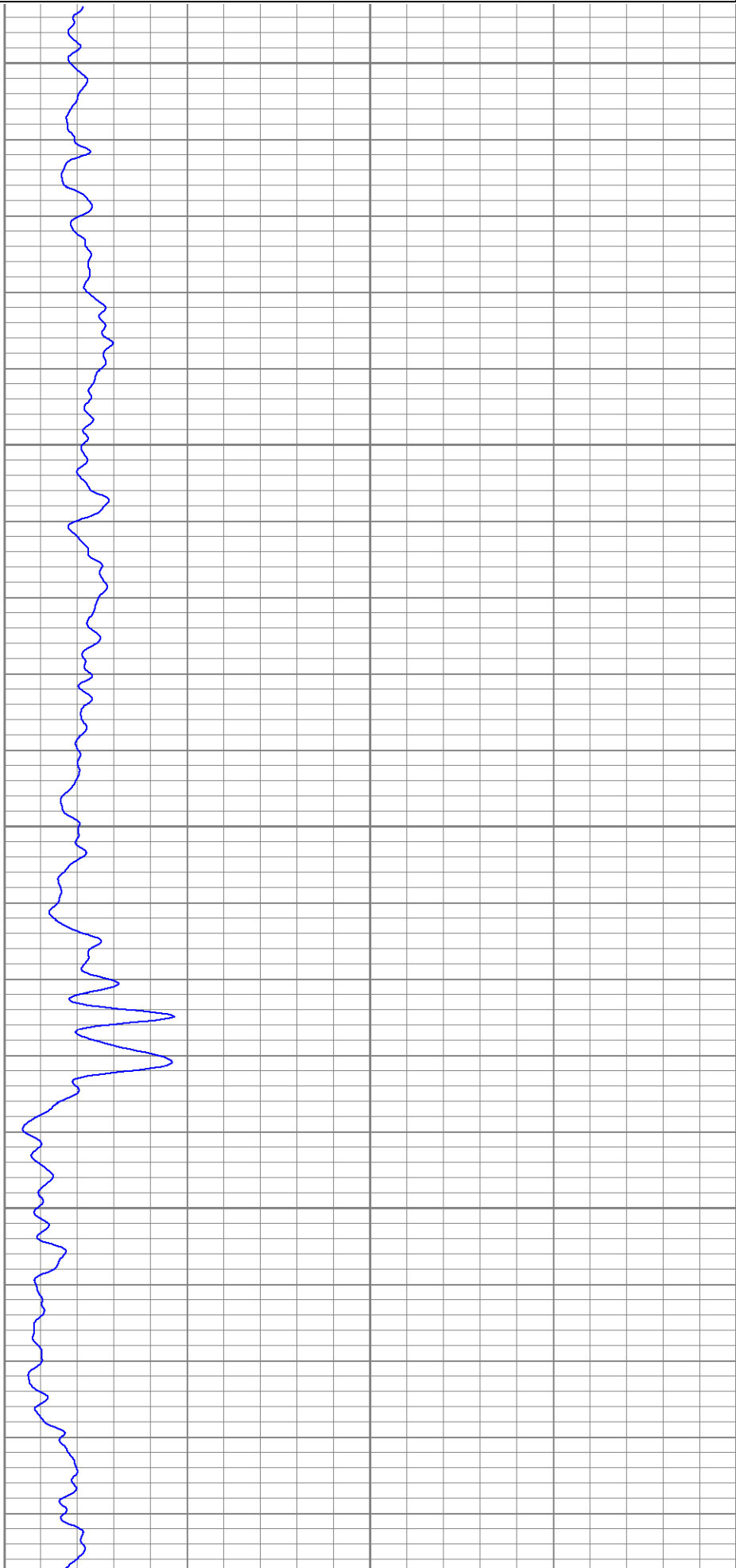


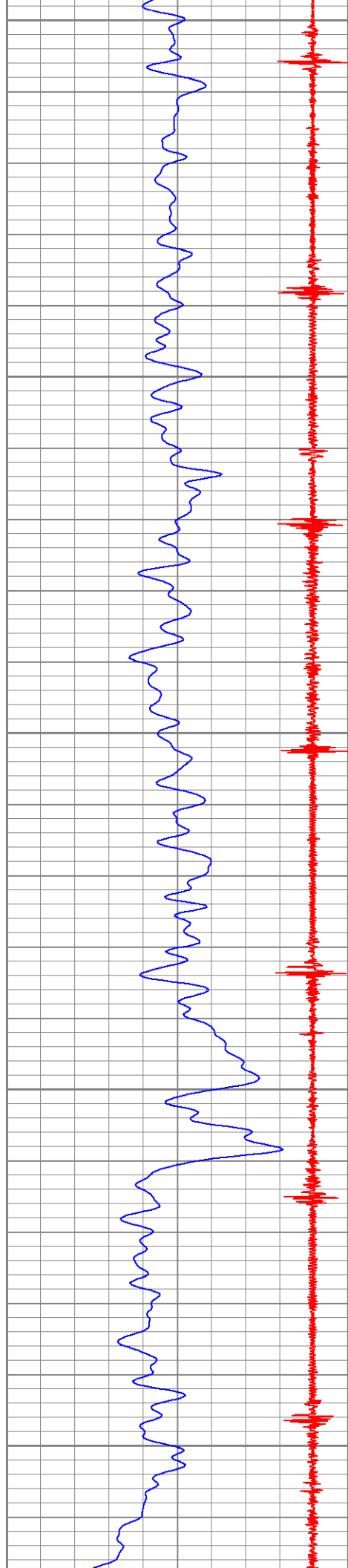
4500

4550

4600

4650





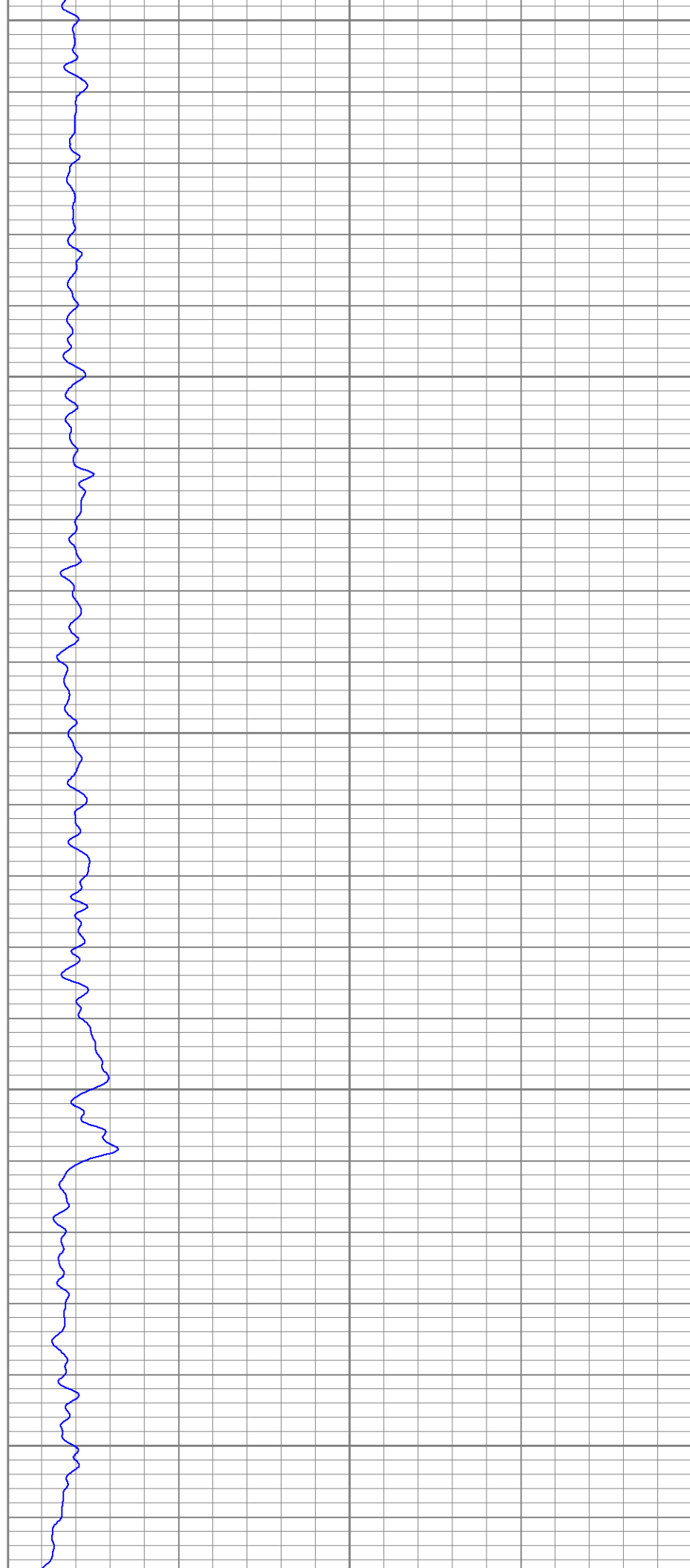
4700

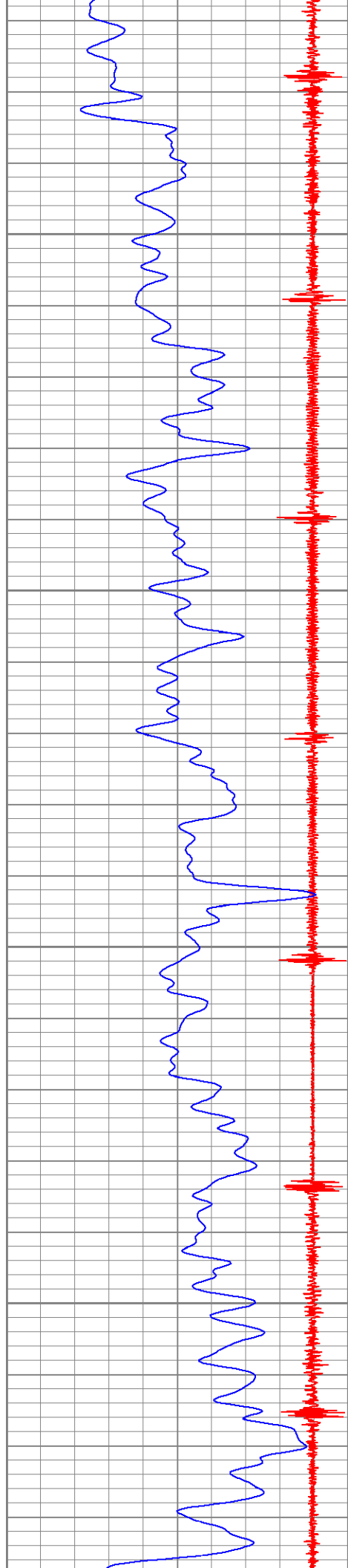
4750

4800

4850

4900





4950

5000

5050

5100

