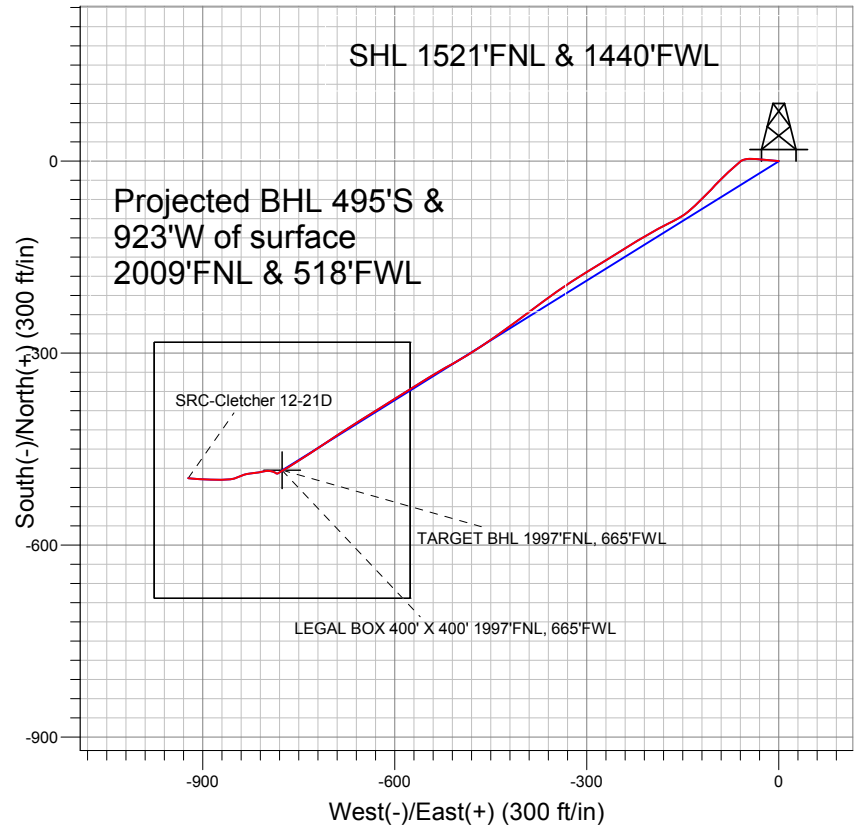


Synergy Resources



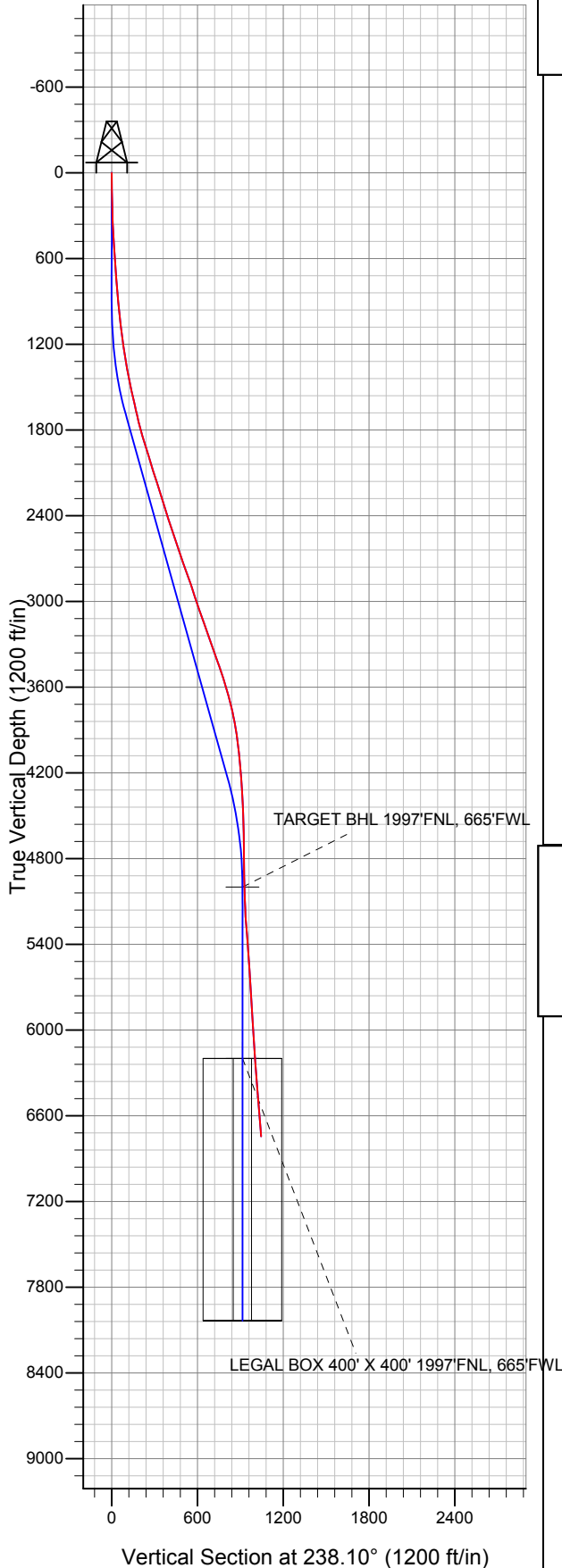
LEGEND

- ▲ SRC-Cletcher 12-21D, SRC-Cletcher 12-21D, SRC-Cletcher 12-21D Plan #2 (8-29-11) V0
- SRC-Cletcher 12-21D
- Survey #1

Final Survey Plot

Projected Final Survey -
 6875'MD & 6745'TVD @ 1045'VS
 6.3 deg Inc 276.3 deg AZ

Project: SEC.21-T4N-R68W
 Site: SRC-Cletcher Pad Sec.21-T4N-R68W
 Well: SRC-Cletcher 12-21D
 Plan: SRC-Cletcher 12-21D





Directional

Synergy Resources

SEC.21-T4N-R68W

SRC-Cletcher Pad Sec.21-T4N-R68W

SRC-Cletcher 12-21D

SRC-Cletcher 12-21D

Survey: Survey #1

Standard Survey Report

12 September, 2011

Company:	Synergy Resources	Local Co-ordinate Reference:	Well SRC-Cletcher 12-21D
Project:	SEC.21-T4N-R68W	TVD Reference:	WELL @ 4949.0ft (Original Well Elev)
Site:	SRC-Cletcher Pad Sec.21-T4N-R68W	MD Reference:	WELL @ 4949.0ft (Original Well Elev)
Well:	SRC-Cletcher 12-21D	North Reference:	True
Wellbore:	SRC-Cletcher 12-21D	Survey Calculation Method:	Minimum Curvature
Design:	SRC-Cletcher 12-21D	Database:	Landmark

Survey

Measured Depth (ft)	Inclination (°)	Azimuth (°)	Vertical Depth (ft)	+N/-S (ft)	+E/-W (ft)	Vertical Section (ft)	Dogleg Rate (°/100ft)	Build Rate (°/100ft)	Turn Rate (°/100ft)
1,832.0	15.90	243.20	1,814.2	-101.2	-179.5	205.9	3.04	3.01	1.61
1,926.0	17.50	239.90	1,904.2	-114.1	-203.2	232.8	1.98	1.70	-3.51
2,021.0	17.20	238.10	1,994.9	-128.7	-227.5	261.2	0.65	-0.32	-1.89
2,115.0	17.50	238.80	2,084.6	-143.4	-251.4	289.2	0.39	0.32	0.74
2,208.0	17.90	238.70	2,173.2	-158.1	-275.6	317.5	0.43	0.43	-0.11
2,302.0	17.40	237.80	2,262.8	-173.0	-299.8	346.0	0.61	-0.53	-0.96
2,396.0	17.40	236.60	2,352.5	-188.3	-323.4	374.1	0.38	0.00	-1.28
2,490.0	17.70	235.30	2,442.1	-204.1	-346.9	402.4	0.53	0.32	-1.38
2,583.0	18.30	233.60	2,530.5	-220.9	-370.3	431.1	0.86	0.65	-1.83
2,676.0	18.90	232.70	2,618.7	-238.6	-394.0	460.6	0.72	0.65	-0.97
2,770.0	19.50	233.60	2,707.5	-257.2	-418.8	491.4	0.71	0.64	0.96
2,864.0	19.70	235.00	2,796.0	-275.6	-444.4	522.9	0.54	0.21	1.49
2,958.0	18.60	237.60	2,884.8	-292.7	-470.0	553.7	1.48	-1.17	2.77
3,051.0	18.70	240.10	2,972.9	-308.1	-495.4	583.4	0.87	0.11	2.69
3,145.0	18.60	239.70	3,062.0	-323.2	-521.4	613.5	0.17	-0.11	-0.43
3,239.0	19.30	238.50	3,150.9	-338.8	-547.6	644.0	0.85	0.74	-1.28
3,333.0	19.50	237.40	3,239.6	-355.4	-574.1	675.2	0.44	0.21	-1.17
3,426.0	19.90	238.30	3,327.1	-372.1	-600.6	706.6	0.54	0.43	0.97
3,520.0	19.40	238.10	3,415.6	-388.7	-627.5	738.2	0.54	-0.53	-0.21
3,614.0	18.80	237.40	3,504.5	-405.2	-653.5	768.9	0.68	-0.64	-0.74
3,708.0	16.40	236.40	3,594.1	-420.7	-677.3	797.3	2.57	-2.55	-1.06
3,801.0	14.80	238.30	3,683.6	-434.2	-698.4	822.3	1.81	-1.72	2.04
3,895.0	12.60	236.20	3,775.0	-446.2	-717.1	844.6	2.40	-2.34	-2.23
3,989.0	9.90	235.20	3,867.1	-456.5	-732.3	862.9	2.88	-2.87	-1.06
4,083.0	7.50	236.40	3,960.1	-464.5	-744.0	877.1	2.56	-2.55	1.28
4,176.0	6.60	241.10	4,052.4	-470.4	-753.8	888.5	1.15	-0.97	5.05
4,270.0	4.90	237.30	4,145.9	-475.2	-761.9	897.9	1.85	-1.81	-4.04
4,364.0	4.00	235.90	4,239.6	-479.2	-768.0	905.2	0.96	-0.96	-1.49
4,457.0	3.40	241.70	4,332.4	-482.4	-773.1	911.2	0.76	-0.65	6.24
4,551.0	2.90	243.20	4,426.3	-484.8	-777.6	916.4	0.54	-0.53	1.60
4,645.0	1.80	226.40	4,520.2	-486.8	-780.8	920.2	1.37	-1.17	-17.87
4,739.0	1.40	252.20	4,614.1	-488.2	-783.0	922.7	0.87	-0.43	27.45
4,833.0	1.50	303.20	4,708.1	-487.9	-785.1	924.4	1.33	0.11	54.26
4,927.0	0.80	304.20	4,802.1	-486.9	-786.7	925.2	0.74	-0.74	1.06
5,021.0	1.10	297.20	4,896.1	-486.1	-788.0	925.9	0.34	0.32	-7.45
5,114.0	2.60	285.80	4,989.0	-485.1	-790.9	927.8	1.65	1.61	-12.26
5,124.3	2.59	285.21	4,999.4	-485.0	-791.3	928.1	0.29	-0.12	-5.75
TARGET BHL 1997'FNL, 665'FWL									
5,208.0	2.50	280.20	5,082.9	-484.1	-794.9	930.7	0.29	-0.10	-5.98
5,395.0	4.10	256.90	5,269.6	-484.9	-805.5	940.1	1.10	0.86	-12.46
5,583.0	5.50	263.60	5,457.0	-487.5	-821.0	954.6	0.80	0.74	3.56
5,771.0	3.40	254.70	5,644.4	-489.9	-835.3	968.0	1.17	-1.12	-4.73
5,959.0	3.30	241.50	5,832.1	-494.0	-845.4	978.8	0.41	-0.05	-7.02
6,147.0	4.00	264.30	6,019.7	-497.2	-856.7	990.1	0.85	0.37	12.13
6,320.6	4.65	268.13	6,192.8	-498.1	-869.8	1,001.6	0.41	0.37	2.21
LEGAL BOX 400' X 400' 1997'FNL, 665'FWL									
6,335.0	4.70	268.40	6,207.2	-498.1	-870.9	1,002.6	0.41	0.38	1.88
6,523.0	5.40	272.80	6,394.4	-497.9	-887.5	1,016.5	0.43	0.37	2.34
6,708.0	5.70	273.10	6,578.6	-497.0	-905.3	1,031.2	0.16	0.16	0.16
6,831.0	6.30	276.30	6,700.9	-495.9	-918.1	1,041.5	0.56	0.49	2.60
6,875.0	6.30	276.30	6,744.6	-495.4	-922.9	1,045.3	0.00	0.00	0.00

Company:	Synergy Resources	Local Co-ordinate Reference:	Well SRC-Cletcher 12-21D
Project:	SEC.21-T4N-R68W	TVD Reference:	WELL @ 4949.0ft (Original Well Elev)
Site:	SRC-Cletcher Pad Sec.21-T4N-R68W	MD Reference:	WELL @ 4949.0ft (Original Well Elev)
Well:	SRC-Cletcher 12-21D	North Reference:	True
Wellbore:	SRC-Cletcher 12-21D	Survey Calculation Method:	Minimum Curvature
Design:	SRC-Cletcher 12-21D	Database:	Landmark

Checked By: _____	Approved By: _____	Date: _____
-------------------	--------------------	-------------