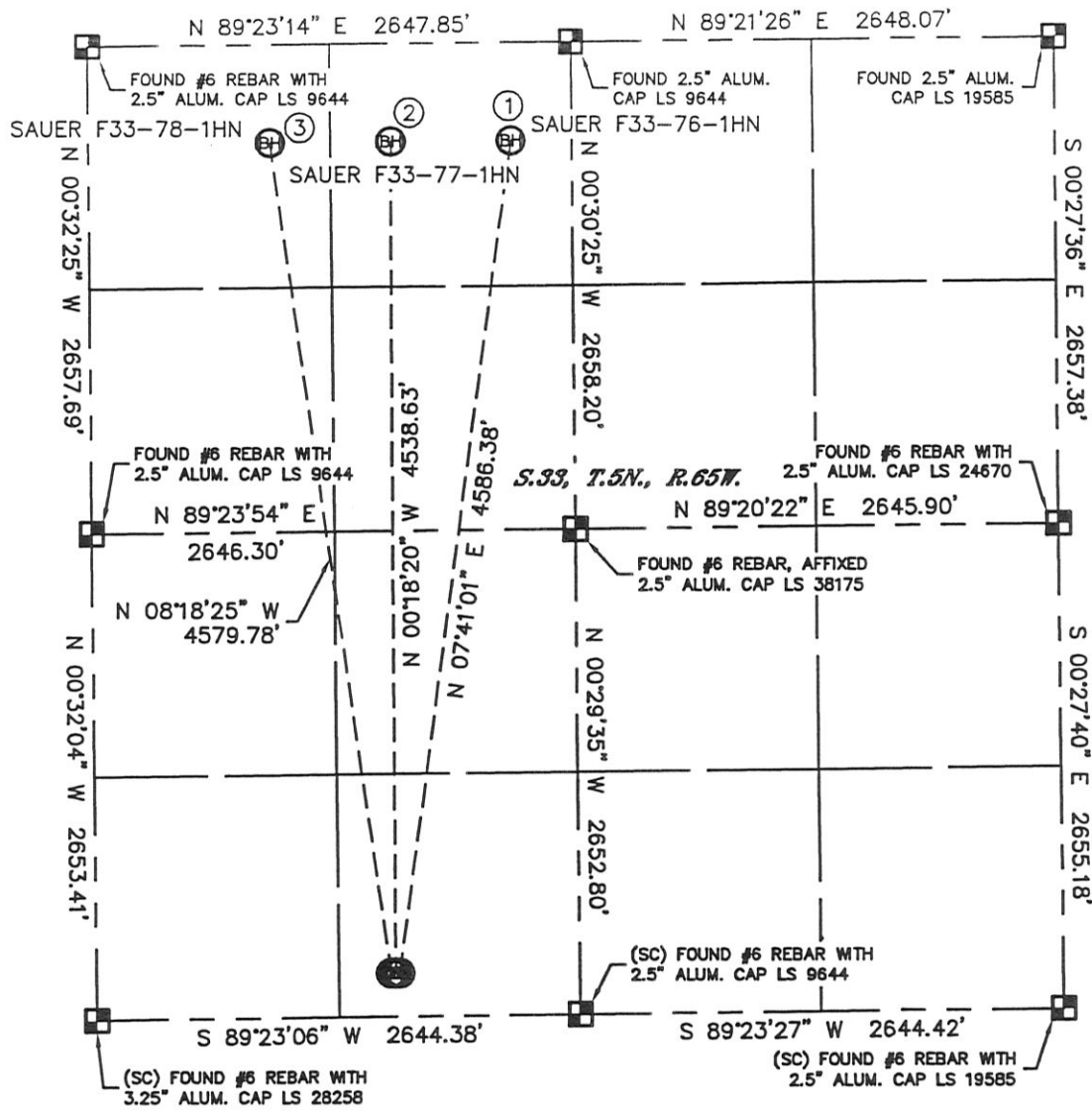




MULTI-WELL PLAN

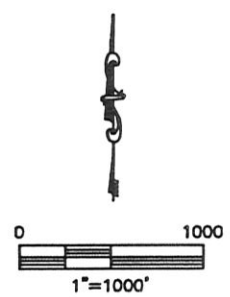
SAUER F33-76-1HN, 77-1HN, 78-1HN
THIS MAP DOES NOT REPRESENT A BOUNDARY SURVEY

SECTION: 33
TOWNSHIP: 5N
RANGE: 65W



- | | | |
|--|--|---|
| <p>①
-BOTTOM HOLE-
SAUER F33-76-1HN
535' FNL
2310' FWL
LAT-40.36159°N
LONG-104.66957°W</p> | <p>②
-BOTTOM HOLE-
SAUER F33-77-1HN
535' FNL
1650' FWL
LAT-40.36159°N
LONG-104.67194°W</p> | <p>③
-BOTTOM HOLE-
SAUER F33-78-1HN
535' FNL
990' FWL
LAT-40.36158°N
LONG-104.67431°W</p> |
|--|--|---|

LEGEND
 = ALIQUOT MONUMENT AS DESCRIBED
 = CALCULATED POSITION

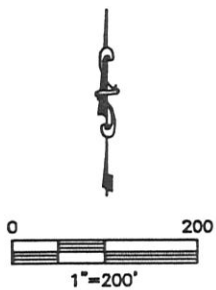
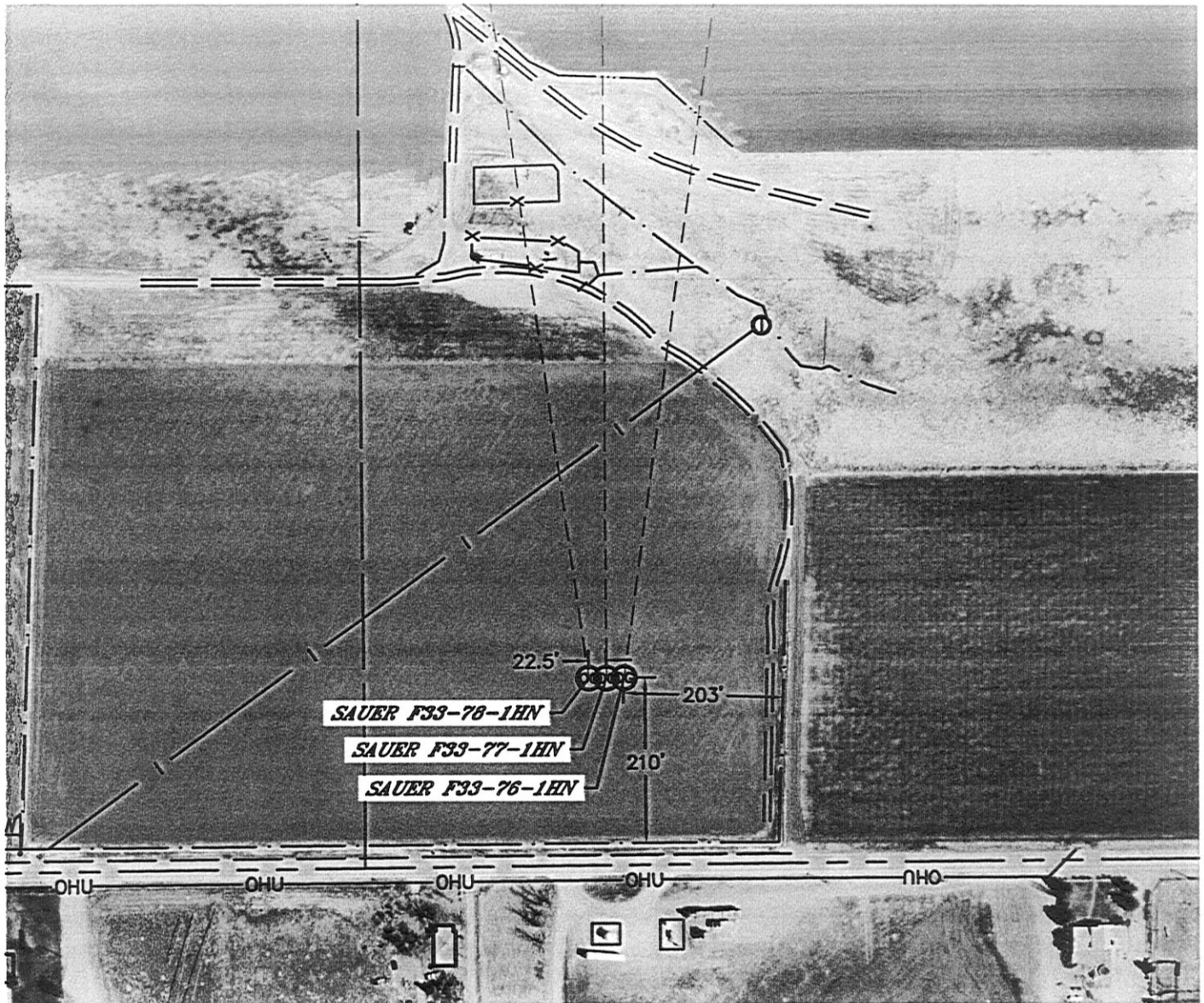


Lat40°, Inc. 1635 Foxtrail Drive, Suite 325 Loveland, CO 970-776-3321

MULTI-WELL PLAN

SAUER F33-76-1HN, 77-1HN, 78-1HN

SECTION: 33
TOWNSHIP: 5N
RANGE: 65W



DATE: rev 01/05/12
PROJECT#: 2011334