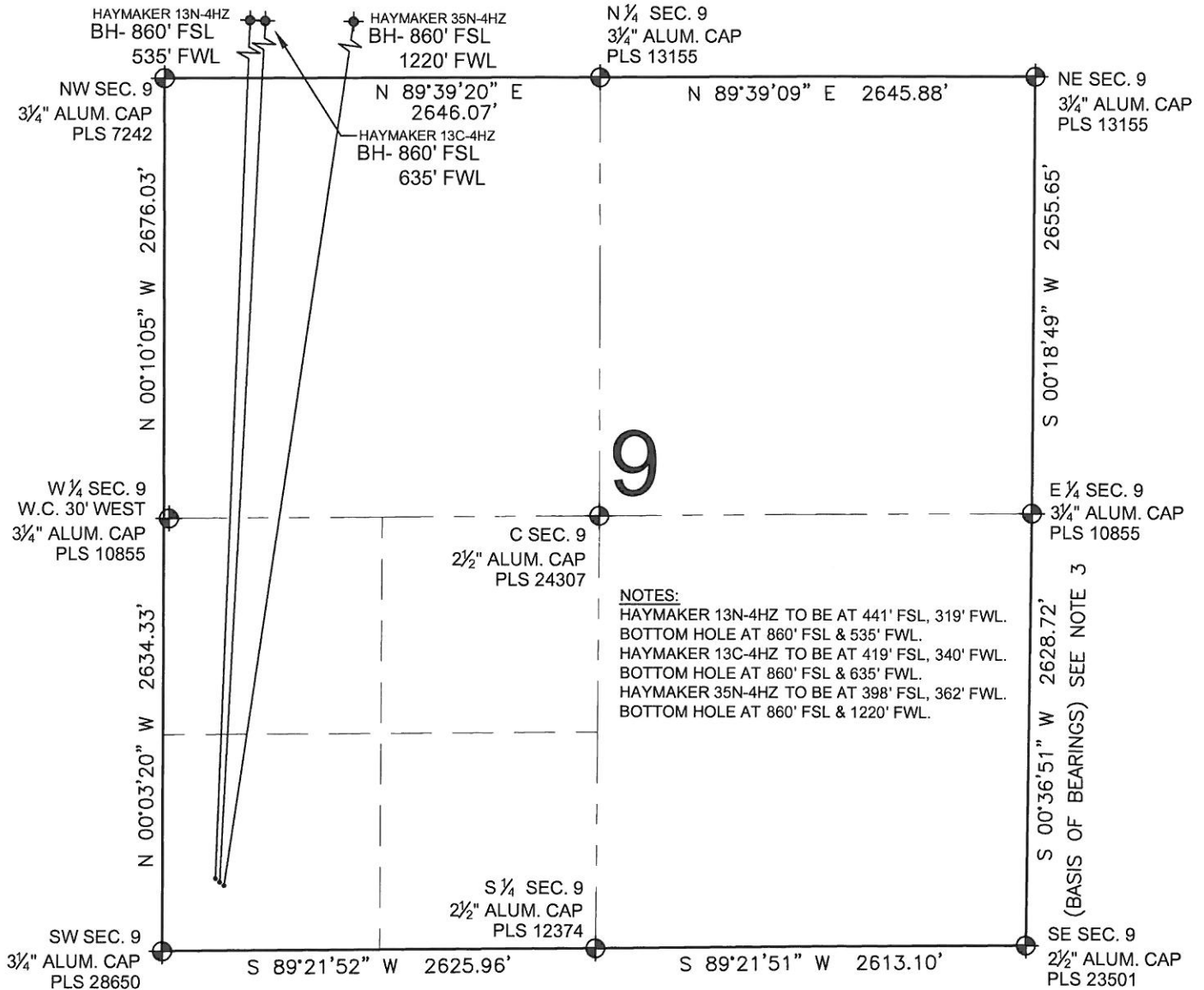


# PAD DRAWING: HAYMAKER 3 PAD

SECTION 9, TOWNSHIP 2 NORTH, RANGE 65 WEST, 6TH P.M.



## NOTES:

HAYMAKER 13N-4HZ TO BE AT 441' FSL, 319' FWL.  
 BOTTOM HOLE AT 860' FSL & 535' FWL.  
 HAYMAKER 13C-4HZ TO BE AT 419' FSL, 340' FWL.  
 BOTTOM HOLE AT 860' FSL & 635' FWL.  
 HAYMAKER 35N-4HZ TO BE AT 398' FSL, 362' FWL.  
 BOTTOM HOLE AT 860' FSL & 1220' FWL.

## NOTES:

- THIS FIELD SURVEY CONFORMS TO THE MINIMUM STANDARDS SET BY THE C.O.G.C.C., RULE NO. 215
- HORIZONTAL POSITIONS AND ORTHOMETRIC ELEVATIONS SHOWN AT THE WELL HEAD, ARE BASED ON GPS-RTK POSITIONS DERIVED FROM MINIMUM 2-HOUR STATIC OBSERVATIONS CORRECTED BY THE NATIONAL GEODETIC SURVEY ONLINE POSITIONING USER SERVICE, O.P.U.S. DATUM: HORIZONTAL = NAD83/2007, VERTICAL = NAVD88
- THE BASIS OF BEARINGS ARE STATE PLANE COORDINATE SYSTEM GRID BEARINGS SHOWN HEREON BETWEEN THE DESCRIBED THE MONUMENTS SHOWN HEREON.
- GRID DISTANCES ARE SHOWN, AS MEASURED IN THE FIELD, WITH TIES TO WELLS MEASURED PERPENDICULAR TO SECTION LINES.

## LEGEND

- = EXISTING MONUMENT  
 = PROPOSED WELL  
 = BOTTOM HOLE  
 = EXISTING WELL  
 BH = BOTTOM HOLE

PREPARED BY:



KERR-MCGEE OIL & GAS ONSHORE LP

FIELD DATE: 12-09-11	PAD NAME: HAYMAKER 3 PAD
DRAWING DATE: 12-19-11	SURFACE LOCATION: WELD COUNTY, COLORADO
BY: SMF	SW 1/4 SW 1/4, SEC. 9, T2N, R65W, 6TH P.M.

