

HALLIBURTON

WILLIAMS PRODUCTION RMT INC - EBUS

**GM 313-23
GRAND VALLEY
Garfield County , Colorado**

**Cement Surface Casing
11-Jul-2011**

Job Site Documents

The Road to Excellence Starts with Safety

Sold To #: 300721	Ship To #: 2862412	Quote #:	Sales Order #: 8255300
Customer: WILLIAMS PRODUCTION RMT INC - EBUS	Customer Rep: Moore, Frank		
Well Name: GM	Well #: 313-23	API/UWI #: 05-045-20471	
Field: GRAND VALLEY	City (SAP): PARACHUTE	County/Parish: Garfield	State: Colorado
Lat: N 39.506 deg. OR N 39 deg. 30 min. 22.669 secs.	Long: W 108.083 deg. OR W -109 deg. 55 min. 0.368 secs.		
Contractor: NABORS 576	Rig/Platform Name/Num: NABORS 576		
Job Purpose: Cement Surface Casing			
Well Type: Development Well	Job Type: Cement Surface Casing		
Sales Person: KOHL, KYLE	Srv Supervisor: KUKUS, CRAIG	MBU ID Emp #: 369124	

Job Personnel

HES Emp Name	Exp Hrs	Emp #	HES Emp Name	Exp Hrs	Emp #	HES Emp Name	Exp Hrs	Emp #
BURKE, BRENDAN Patrick	4	487782	KUKUS, CRAIG A	4	369124	SMITH, DUSTIN Michael	4	418015
WYCKOFF, RYAN Scott	4	476117						

Equipment

HES Unit #	Distance-1 way	HES Unit #	Distance-1 way	HES Unit #	Distance-1 way	HES Unit #	Distance-1 way
10025118	60 mile	10567589C	60 mile	10741259	60 mile	10829469	60 mile
10995027	60 mile						

Job Hours

Date	On Location Hours	Operating Hours	Date	On Location Hours	Operating Hours	Date	On Location Hours	Operating Hours
7/11/11	4	2						

TOTAL	Total is the sum of each column separately							
-------	--	--	--	--	--	--	--	--

Job

Formation Name						Date	Time	Time Zone	
Formation Depth (MD)	Top			Bottom		Called Out	11 - Jul - 2011	06:30	MST
Form Type			BHST			On Location	11 - Jul - 2011	10:00	MST
Job depth MD	802. ft		Job Depth TVD		802. ft	Job Started	11 - Jul - 2011	12:22	MST
Water Depth			Wk Ht Above Floor		4. ft	Job Completed	11 - Jul - 2011	13:01	MST
Perforation Depth (MD)	From			To		Departed Loc	11 - Jul - 2011	14:30	MST

Well Data

Description	New / Used	Max pressure psig	Size in	ID in	Weight lbm/ft	Thread	Grade	Top MD ft	Bottom MD ft	Top TVD ft	Bottom TVD ft
-------------	------------	-------------------	---------	-------	---------------	--------	-------	-----------	--------------	------------	---------------

Sales/Rental/3rd Party (HES)

Description	Qty	Qty uom	Depth	Supplier
PLUG,CMTG,TOP,9 5/8,HWE,8.16 MIN/9.06 MA	1	EA		

Tools and Accessories

Type	Size	Qty	Make	Depth	Type	Size	Qty	Make	Depth	Type	Size	Qty	Make
Guide Shoe					Packer					Top Plug	9 5/8	1	HES
Float Shoe					Bridge Plug					Bottom Plug			
Float Collar					Retainer					SSR plug set			
Insert Float										Plug Container	9 5/8	1	HES
Stage Tool										Centralizers			

Miscellaneous Materials

Gelling Agt	Conc	Surfactant	Conc	Acid Type	Qty	Conc	%
Treatment Fld	Conc	Inhibitor	Conc	Sand Type	Size		Qty

Fluid Data

Stage/Plug #: 1	Fluid #	Stage Type	Fluid Name	Qty	Qty uom	Mixing Density lbm/gal	Yield ft3/sk	Mix Fluid Gal/sk	Rate bbl/min	Total Mix Fluid Gal/sk
-----------------	---------	------------	------------	-----	---------	------------------------	--------------	------------------	--------------	------------------------

Stage/Plug #: 1									
Fluid #	Stage Type	Fluid Name	Qty	Qty uom	Mixing Density lbm/gal	Yield ft ³ /sk	Mix Fluid Gal/sk	Rate bbl/min	Total Mix Fluid Gal/sk
1	Spacer		20.00	bbl	.	.0	.0	4	
2	VersaCem Tail	VERSACEM (TM) SYSTEM (452010)	235.0	sacks	12.8	2.11	13.75	7	13.75
13.75 Gal		FRESH WATER							
3	Displacement Fluid		58.00	bbl	8.34	.0	.0	10	
Calculated Values		Pressures		Volumes					
Displacement	58	Shut In: Instant		Lost Returns	0	Cement Slurry	88	Pad	
Top Of Cement	SURFACE	5 Min		Cement Returns	10	Actual Displacement	59	Treatment	
Frac Gradient		15 Min		Spacers	20	Load and Breakdown		Total Job	167
Rates									
Circulating	RIG	Mixing	7	Displacement	10	Avg. Job	8.5		
Cement Left In Pipe	Amount	40.06 ft	Reason	Shoe Joint					
Frac Ring # 1 @	ID	Frac ring # 2 @	ID	Frac Ring # 3 @	ID	Frac Ring # 4 @	ID		
The Information Stated Herein Is Correct				Customer Representative Signature					

The Road to Excellence Starts with Safety

Sold To #: 300721	Ship To #: 2862412	Quote #:	Sales Order #: 8255300
Customer: WILLIAMS PRODUCTION RMT INC - EBUS	Customer Rep: Moore, Frank		
Well Name: GM	Well #: 313-23	API/UWI #: 05-045-20471	
Field: GRAND VALLEY	City (SAP): PARACHUTE	County/Parish: Garfield	State: Colorado
Legal Description:			
Lat: N 39.506 deg. OR N 39 deg. 30 min. 22.669 secs.		Long: W 108.083 deg. OR W -109 deg. 55 min. 0.368 secs.	
Contractor: NABORS 576	Rig/Platform Name/Num: NABORS 576		
Job Purpose: Cement Surface Casing			Ticket Amount:
Well Type: Development Well	Job Type: Cement Surface Casing		
Sales Person: KOHL, KYLE	Srvc Supervisor: KUKUS, CRAIG	MBU ID Emp #: 369124	

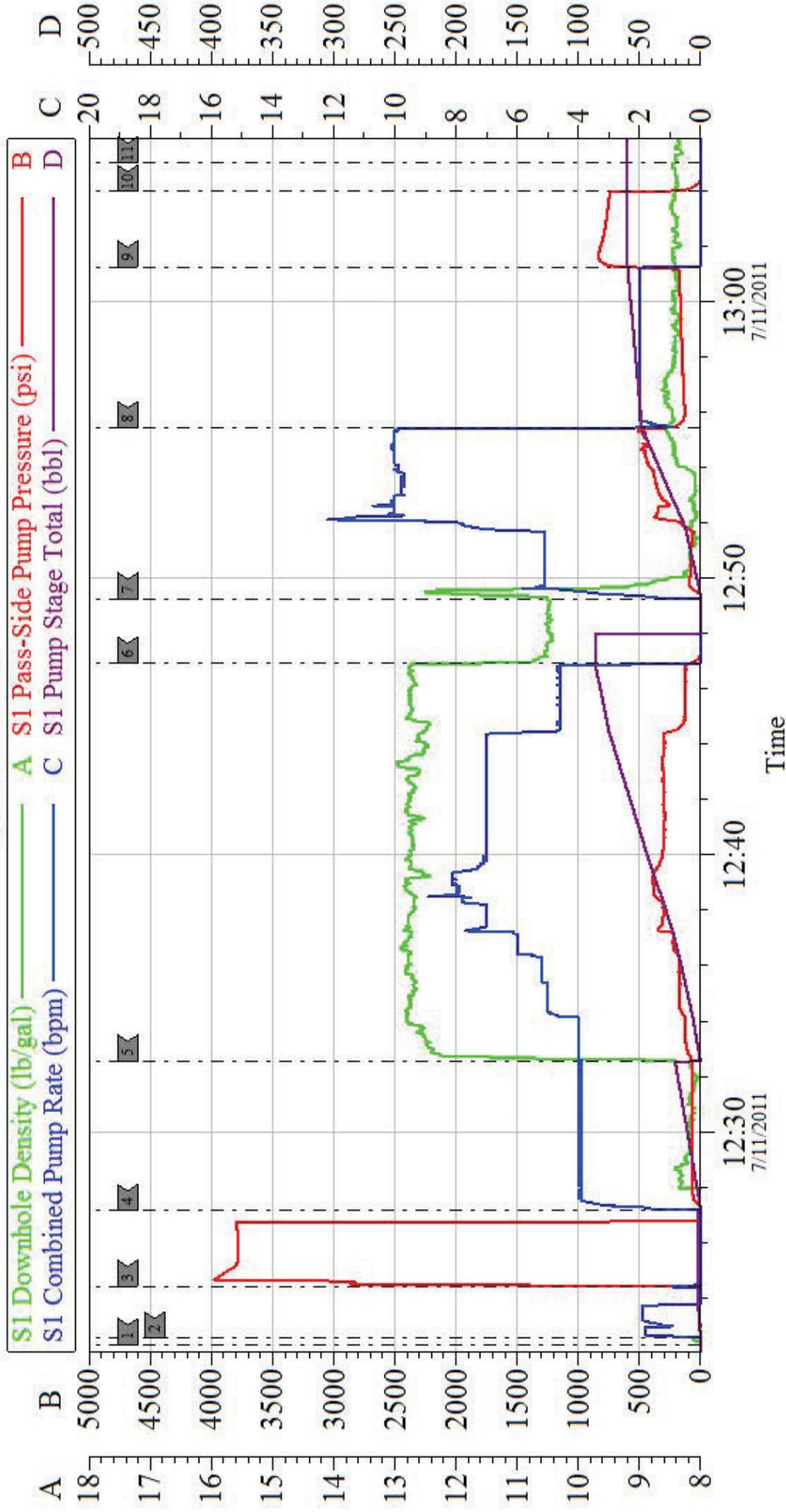
Activity Description	Date/Time	Cht #	Rate bbl/min	Volume bbl		Pressure psig		Comments
				Stage	Total	Tubing	Casing	
Call Out	07/11/2011 06:00							
Depart Yard Safety Meeting	07/11/2011 08:00							SAFETY MEETING INVOLVING THE ENTIRE CMT CREW
Arrive At Loc	07/11/2011 10:00							RIG WAS RUNNING CSG
Assessment Of Location Safety Meeting	07/11/2011 10:10							ASSESSMENT OF LOCATION INVOLVING THE ENTIRE CMT CREW
Circulate Well	07/11/2011 11:15							RIG CIRCULATE WELL
Pre-Rig Up Safety Meeting	07/11/2011 11:25							SAFETY MEETING INVOLVING THE ENTIRE CMT CREW
Rig-Up Equipment	07/11/2011 11:30							RIG UP TO STAND PIPE AND WATER TO UP RIGHT/LAY OUT LINE TO WASH UP TO CELLAR
Pre-Job Safety Meeting	07/11/2011 12:00							SAFETY MEETING INVOLVING EVERYONE ON LOCATION
Start Job	07/11/2011 12:22							TD 802 FT TP 770.39 SJ 40.06 FT LANDING JOINT 38 FT OH 13.5 IN PIPE 9 5/8 IN 32.2 # MUD WT 10.0 #
Other	07/11/2011 12:22		2	2			30.0	FILL LINES WITH FRESH WATER
Pressure Test	07/11/2011 12:24		0.5			3800.0		PRESSURE TEST GOOD
Pump Spacer 1	07/11/2011 12:27		4	20			83.0	FRESH WATER SPACER

Activity Description	Date/Time	Cht #	Rate bbl/min	Volume bbl		Pressure psig		Comments
				Stage	Total	Tubing	Casing	
Pump Tail Cement	07/11/2011 12:32		7	88.3			384.0	PUMP 235 SKS TAIL CEMENT AT 12.8 PPG 2.11 Y 11.75 GAL/SK
Shutdown	07/11/2011 12:46							SHUT DOWN READY TUB FOR WASH UP ON TOP OF PLUG
Drop Top Plug	07/11/2011 12:48							PLUG LEFT THE PLUG CONTAINER
Pump Displacement	07/11/2011 12:49		10	57.5			377.0	PUMP FRESH WATER DISPLACEMENT
Slow Rate	07/11/2011 12:55		2	47			153.0	SLOW RATE LAST 10 BBLS
Bump Plug	07/11/2011 13:01		2	58			815.0	PLUG LANDED 189 PSI
Check Floats	07/11/2011 13:03							FLOATS HELD
End Job	07/11/2011 13:05							HAD GOOD RETURNS THRU OUT THE JOB AND GOT 10 BBLS CEMENT TO SURFACE
Pre-Rig Down Safety Meeting	07/11/2011 13:10							SAFETY MEETING INVOLVING THE ENTIRE CMT CREW
Rig-Down Equipment	07/11/2011 13:15							
Safety Meeting - Departing Location	07/11/2011 14:15							SAFETY MEETING INVOLVING THE ENTIRE CMT CREW
Comment	07/11/2011 14:30							THANK YOU FOR USING HALLIBURTON, CRAIG KUKUS AND CREW

EVENT #	EVENT	VOLUME	SACKS	WEIGHT	YIELD	GAL/ SK
1	Start Job		<div>MAX <u>1120</u></div>			
	FILL LINES	2				
6	Test Lines	3500.0				
9	H2O Spacer	20.0		8.3		
13	LEAD CEMENT					
15	TAIL CEMENT	88.3	235	12.8	2.11	11.75
	SHUTDOWN					
	DROP TOP PLUG					
25	H2O DISPLACE	57.5		8.3		
	SLOW RATE	47.0	2 bbl	slow	2BBL	
	LAND PLUG	171.0	PLUS	500	OVER	
	CHECK FLOATS					
	END JOB		Do Not Overdisplace			
DISPLACEMENT	TOTAL PIPE	SHOE JOINT LENGTH	FLOAT COLLAR	BBL/FT	H2O REQ.	
57.50	770.39	40.06	730.33	0.0787	200	
PSI TO LIFT	290	<div>*****Use Mud Scales on Each Tier*****</div>				
Total Displacement	57.50					
CALCULATED PSI LAND		171	TOTAL FLUID PUMPED		166	
Collapse	2270	Burst	1400	SO#	8255300	

WILLIAMS PRODUCTION

SURFACE



Local Event Log

1	START JOB	12:22:18	2	PRIME LINES	12:22:32	3	PRESSURE TEST	12:24:25
4	PUMP H2O SPACER	12:27:09	5	PUMP TAIL CEMENT	12:32:33	6	SHUT DOWN/DROP PLUG	12:46:56
7	PUMP H2O DISPLACEMENT	12:49:15	8	SLOW RATE	12:55:26	9	BUMP PLUG	13:01:15
10	CHECK FLOATS	13:03:59	11	END JOB	13:05:00			

Customer: WILLIAMS PRODUCTION
Well Description: GM 313-23
Company Rep: FRANK MOORE

Job Date: 11-Jul-2011
Job Type: SURFACE
Cement Supervisor: CRAIG KUKUS

Sales Order #: 8255300
ADC Used: YES
Elite #/Operator: ELITE 3 BRENDAN BURKE