

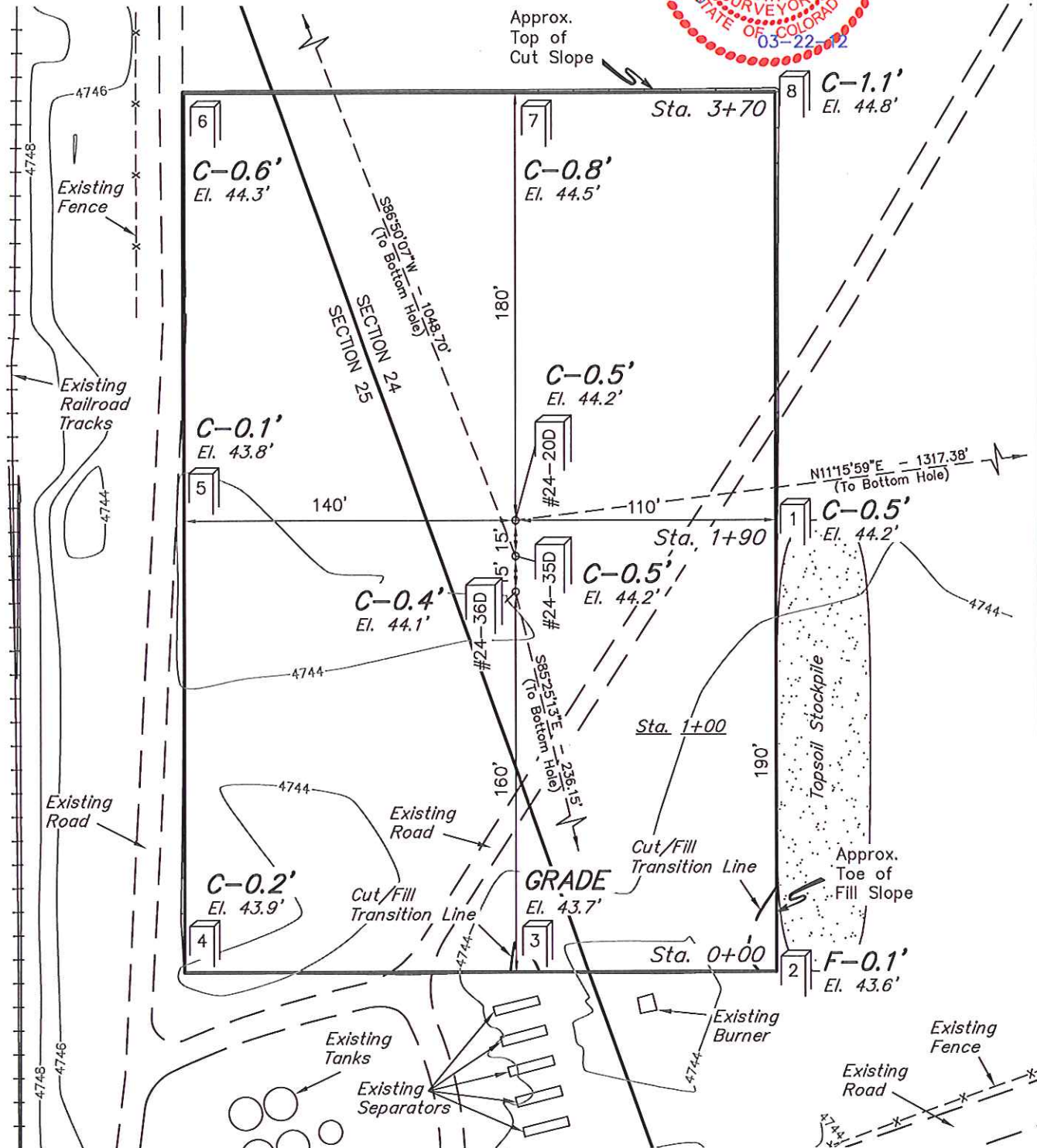
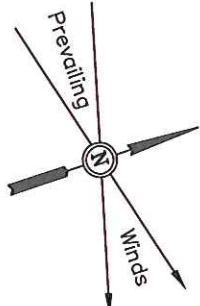
# GREAT WESTERN OIL & GAS COMPANY

## CONSTRUCTION LAYOUT FOR

HCW FD #24-20D, #24-35D & #24-36D  
SECTION 24, T6N, R67W, 6th P.M.  
SE 1/4 SW 1/4

FIGURE #1

SCALE: 1" = 60'  
DATE: 03-15-12  
DRAWN BY: T.B.



Elev. Ungraded Ground At #24-20D Loc. Stake = 4744.2'  
FINISHED GRADE ELEV. AT #24-20D LOC. STAKE = 4743.7'

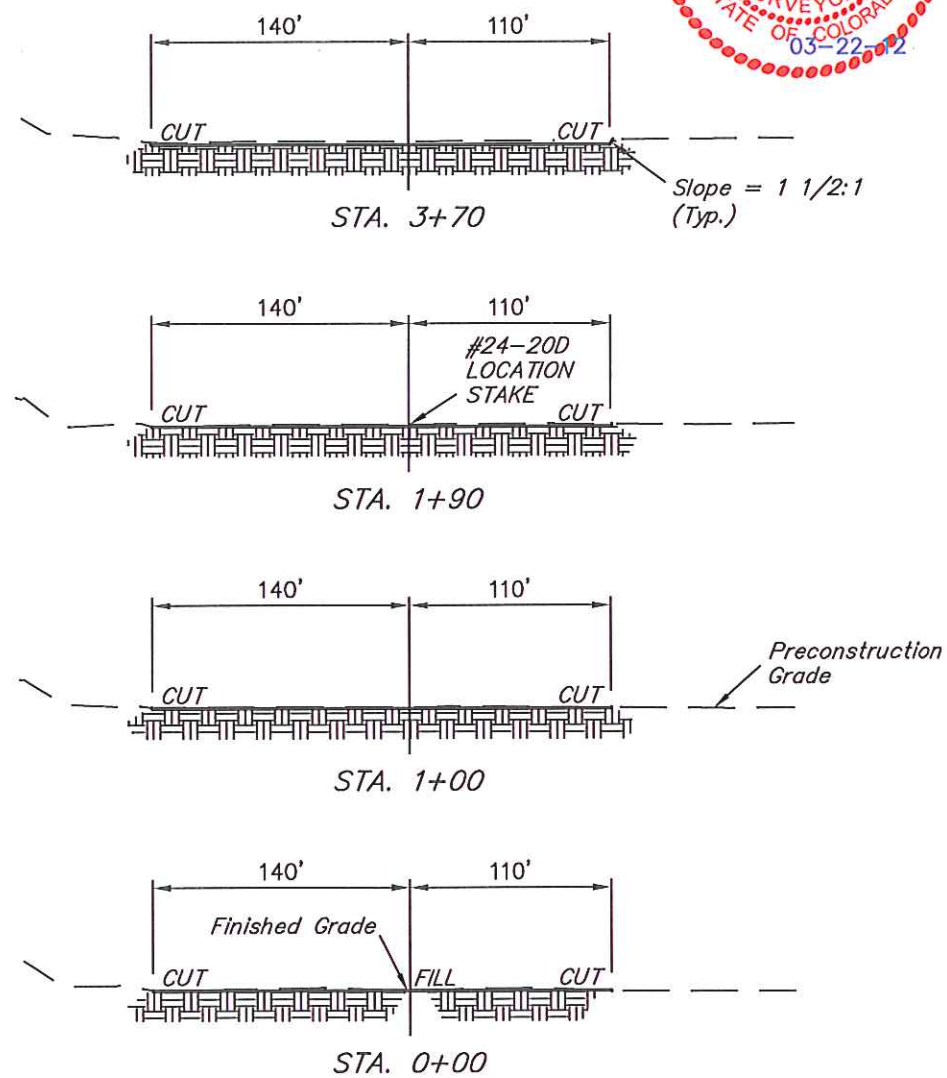
UINTAH ENGINEERING & LAND SURVEYING  
85 So. 200 East \* Vernal, Utah 84078 \* (435) 789-1017

GREAT WESTERN OIL & GAS COMPANY  
 CONSTRUCTION LAYOUT CROSS SECTIONS FOR  
 HCW FD #24-20D, #24-35D & #24-36D  
 SECTION 24, T6N, R67W, 6th P.M.  
 SE 1/4 SW 1/4

FIGURE #2

1" = 40'  
 X-Section Scale  
 1" = 100'

DATE: 03-15-12  
 DRAWN BY: T.B.



NOTE:  
 Topsoil should not be Stripped Below Finished Grade on Substructure Area.

APPROXIMATE ACREAGES  
 WELL SITE DISTURBANCE = ± 2.306 ACRES

\* NOTE:  
 FILL QUANTITY INCLUDES 5% FOR COMPACTION

APPROXIMATE YARDAGES

(6") Topsoil Stripping	=	1,730 Cu. Yds.
Remaining Location	=	300 Cu. Yds.
<b>TOTAL CUT</b>	=	<b>2,030 CU. YDS.</b>
<b>FILL</b>	=	<b>300 CU. YDS.</b>

EXCESS MATERIAL	=	1,730 Cu. Yds.
Topsoil	=	1,730 Cu. Yds.
EXCESS UNBALANCE (After Interim Rehabilitation)	=	0 Cu. Yds.

UINTAH ENGINEERING & LAND SURVEYING  
 85 So. 200 East \* Vernal, Utah 84078 \* (435) 789-1017

GREAT WESTERN OIL & GAS COMPANY

TYPICAL RIG LAYOUT FOR

HCW FD #24-20D, #24-35D & #24-36D  
SECTION 24, T6N, R67W, 6th P.M.  
SE 1/4 SW 1/4

FIGURE #3

SCALE: 1" = 60'  
DATE: 03-15-12  
DRAWN BY: T.B.

