

GREAT WESTERN OIL & GAS COMPANY HCW FD #24-20D, #24-35D & #24-36D

LOCATED IN WELD COUNTY, COLORADO
SECTION 24, T6N, R67W, 6th P.M.

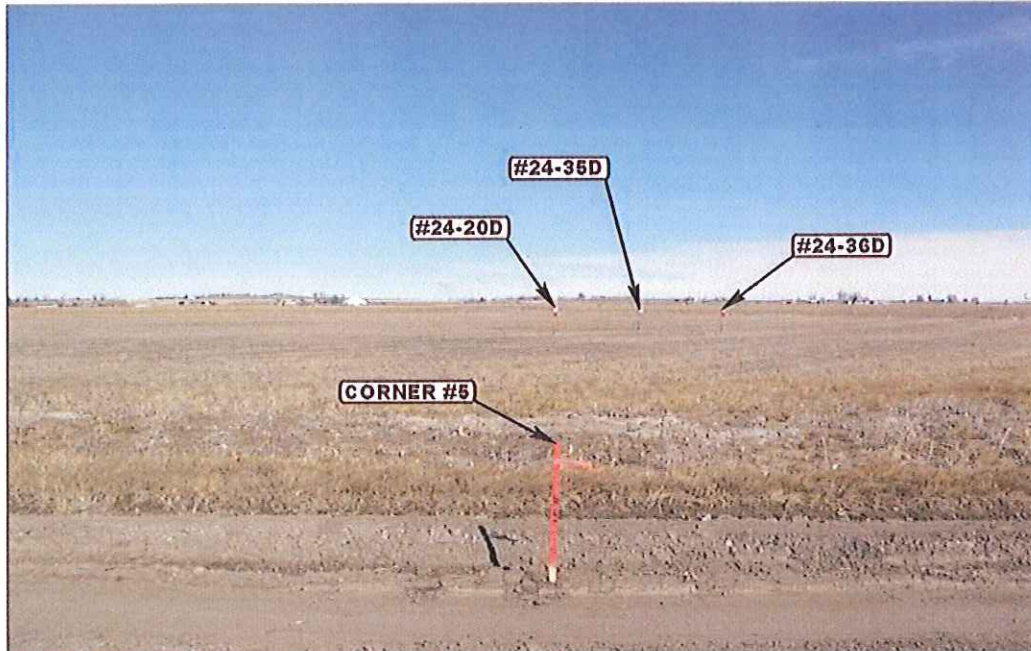


PHOTO: VIEW FROM CORNER #5 TO LOCATION STAKES

CAMERA ANGLE: NORTHERLY



PHOTO: VIEW OF EXISTING ACCESS

CAMERA ANGLE: WESTERLY



U **E** **L** **S** Uintah Engineering & Land Surveying
85 South 200 East Vernal, Utah 84078
(435) 789-1017 * FAX (435) 789-1813

LOCATION PHOTOS

02 22 12
MONTH DAY YEAR

PHOTO

P1

TAKEN BY: D.N.

DRAWN BY: A.T.

REVISED: 00-00-00

GREAT WESTERN OIL & GAS COMPANY HCW FD #24-20D, #24-35D & #24-36D

LOCATED IN WELD COUNTY, COLORADO
SECTION 24, T6N, R67W, 6th P.M.

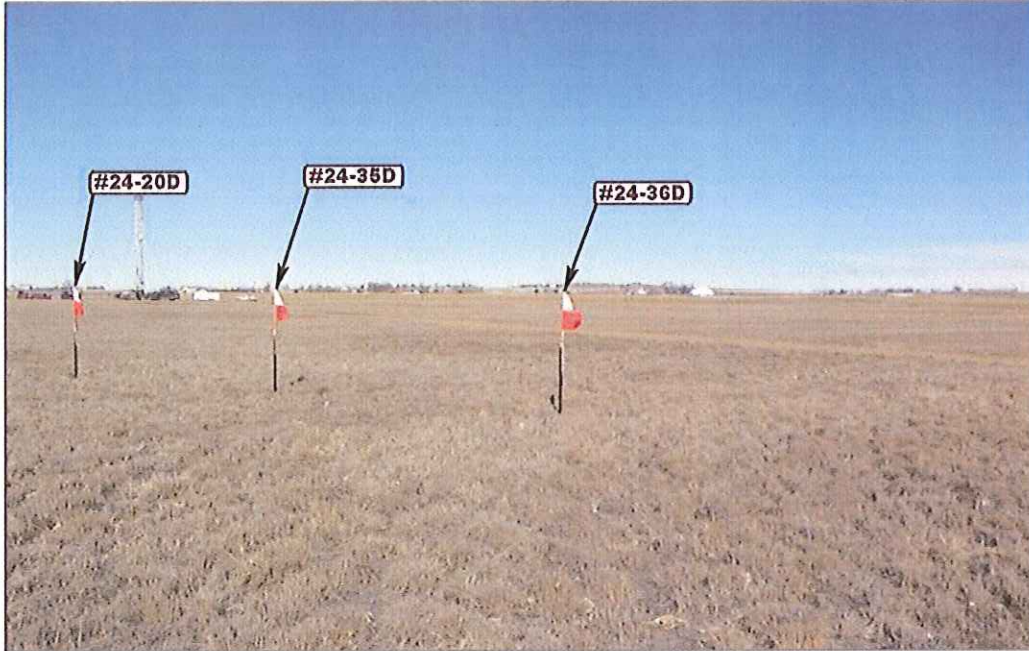


PHOTO: VIEW OF LOCATION STAKES

CAMERA ANGLE: NORTHERLY

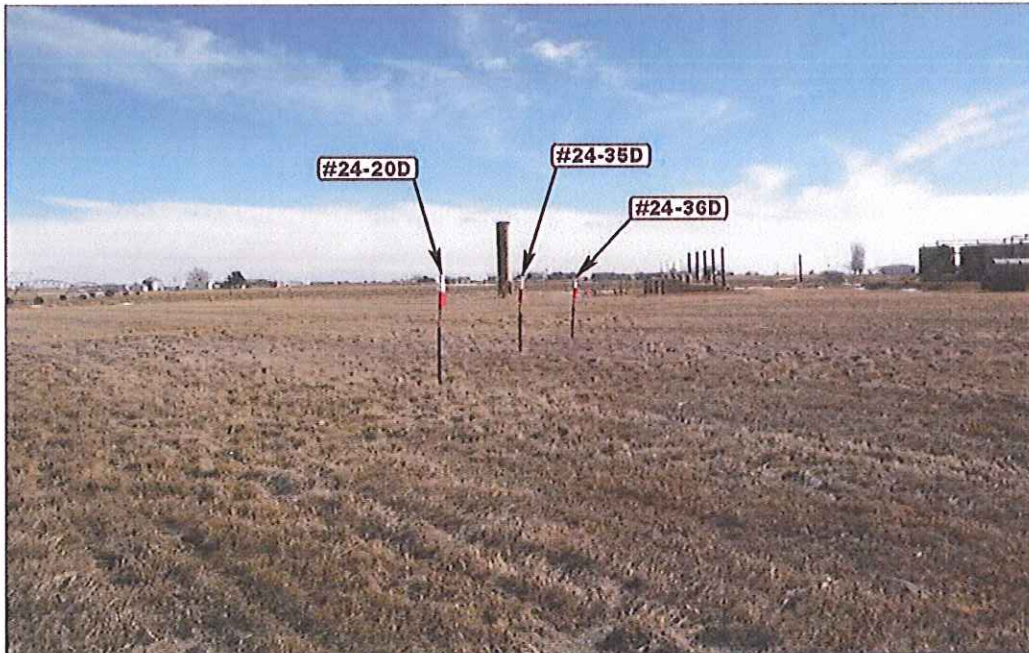


PHOTO: VIEW OF LOCATION STAKES

CAMERA ANGLE: EASTERLY



UELS Uintah Engineering & Land Surveying
85 South 200 East Vernal, Utah 84078
(435) 789-1017 * FAX (435) 789-1813

| | | | | | | |
|------------------------|----------------|-------------------|-----------|-----------|-----------|---------------------|
| LOCATION PHOTOS | | | 02 | 22 | 11 | PHOTO P2 |
| | | | MONTH | DAY | YEAR | |
| TAKEN BY: D.N. | DRAWN BY: A.T. | REVISED: 00-00-00 | | | | |

GREAT WESTERN OIL & GAS COMPANY HCW FD #24-20D, #24-35D & #24-36D

LOCATED IN WELD COUNTY, COLORADO
SECTION 24, T6N, R67W, 6th P.M.

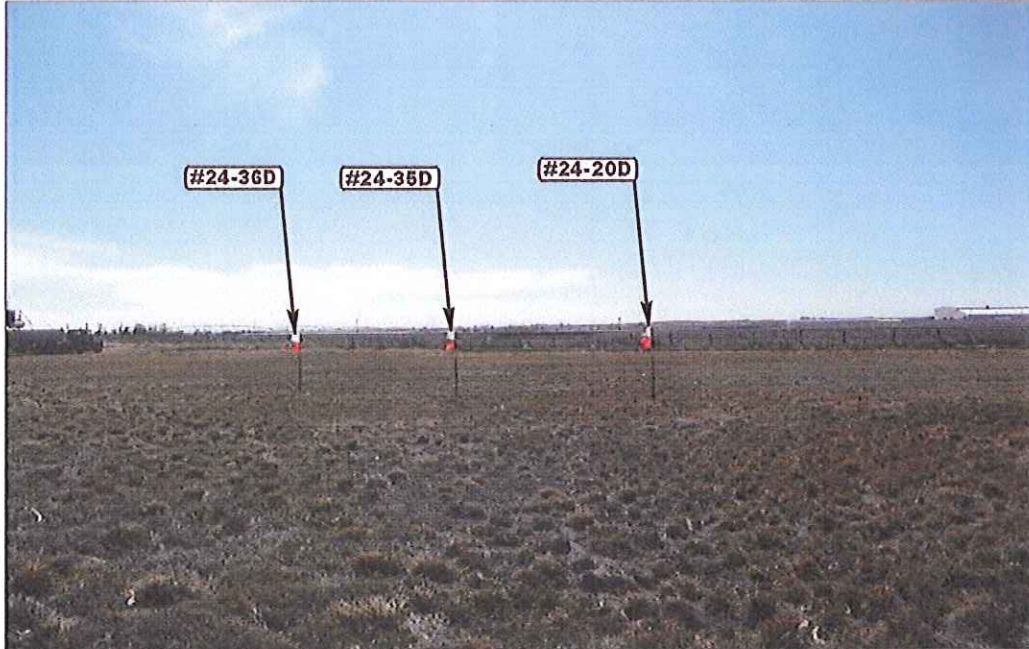


PHOTO: VIEW OF LOCATION STAKES

CAMERA ANGLE: SOUTHERLY



PHOTO: VIEW OF LOCATION STAKES

CAMERA ANGLE: WESTERLY



Since 1964

U **E** **L** **S** Uintah Engineering & Land Surveying
85 South 200 East Vernal, Utah 84078
(435) 789-1017 * FAX (435) 789-1813

LOCATION PHOTOS

02 22 12
MONTH DAY YEAR

PHOTO

P3

TAKEN BY: D.N. | DRAWN BY: A.T. | REVISED: 00-00-00