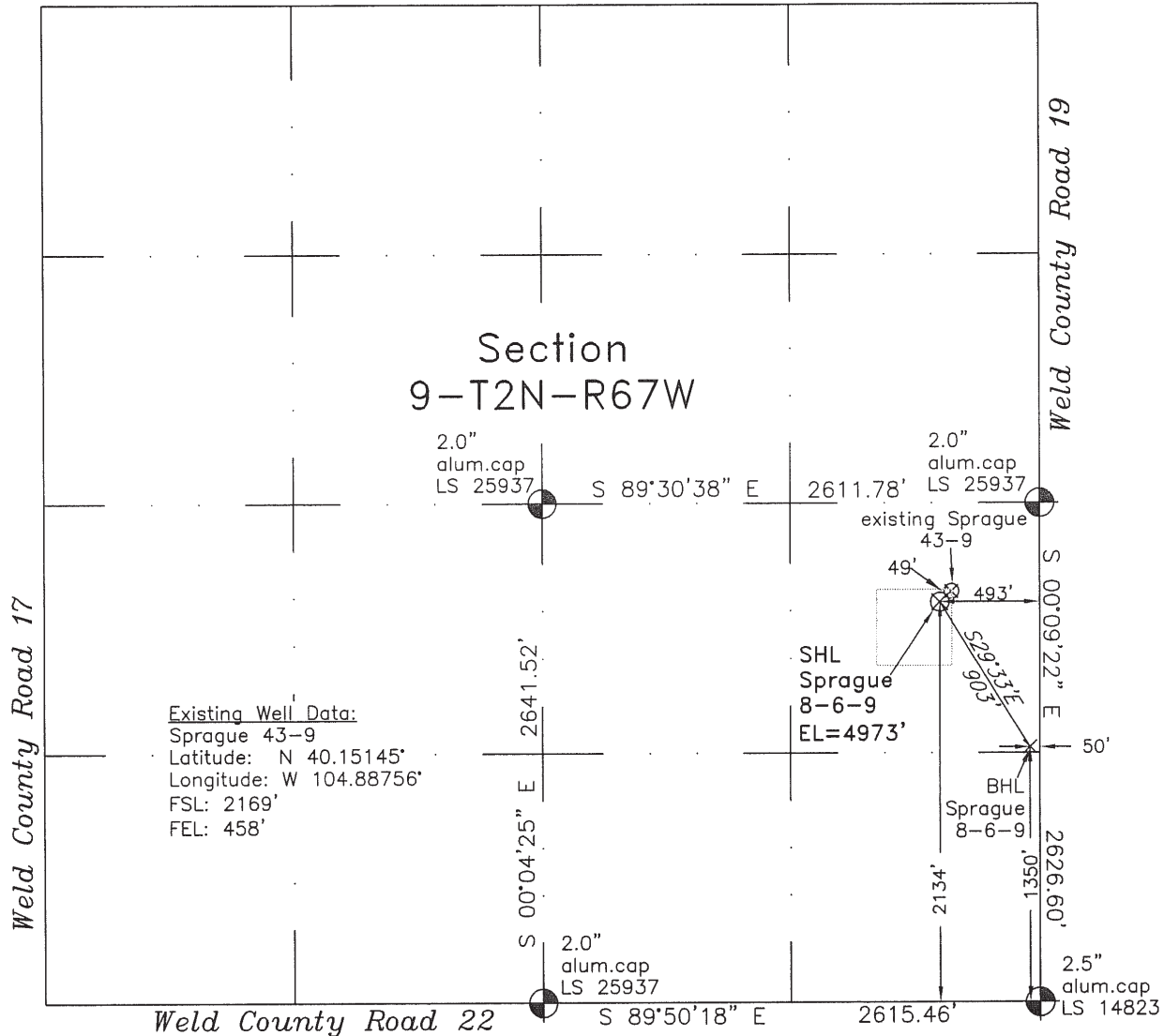


WELL LOCATION CERTIFICATE
 THIS MAP DOES NOT REPRESENT A BOUNDARY SURVEY

Weld County Road 24



In accordance with a request from Doug Pearlman of EnCana Oil & Gas (USA) Inc., Frederick Land Surveying, Inc. has determined the location of the **Sprague 8-6-9** well site to be 2134' FSL and 493' FEL, (BHL 1350' FSL and 50' FEL), as measured at ninety (90) degrees from the section lines of Section 9, Township 2 North, Range 67 West of the 6th Principal Meridian, Weld County, Colorado.

Proposed Surface Hole Data:

Latitude: N 40.15135° BHL(40.14919°)
 Longitude: W 104.88768° BHL(104.88611°)
 Nearest: Building 373' northeast
 Public Road 481' east
 Property Line 280' north

Above Ground Utility 526' east
 Railroad 17,800' northwest

PDOP: 1.0

Notes:

- 1) Bearings and distances based on NAD 83 Colorado North State Plane Coordinates using RTK GPS observations taken 2/17/10 by operator Tom Winans.
- 2) Conversion factor to ground (1.000271870).
- 3) Elevations based on NAVD 88 GPS heights and Geoid 2003 corrections.
- 4) See improvement map for visible improvements within 400 feet.
- 5) The location falls on agricultural land.

NOTICE: According to Colorado law you MUST commence any legal action based upon any defect in this W.L.C. within three years after you first discover such defect. In no event may any action based upon any defect in this W.L.C. be commenced more than ten years from this said date of the certification shown hereon.

I hereby certify that this Well Location Certificate was prepared by me or under my direct supervision on 2/23/10 for and on behalf of EnCana Oil & Gas (USA) Inc. that it is a Land Survey Plat and that it is not to be relied upon for establishment of fences, buildings, or other future improvement lines.

Alex Ronald Perkins LS#34176
 Job #: 06082.023 2-23-2010