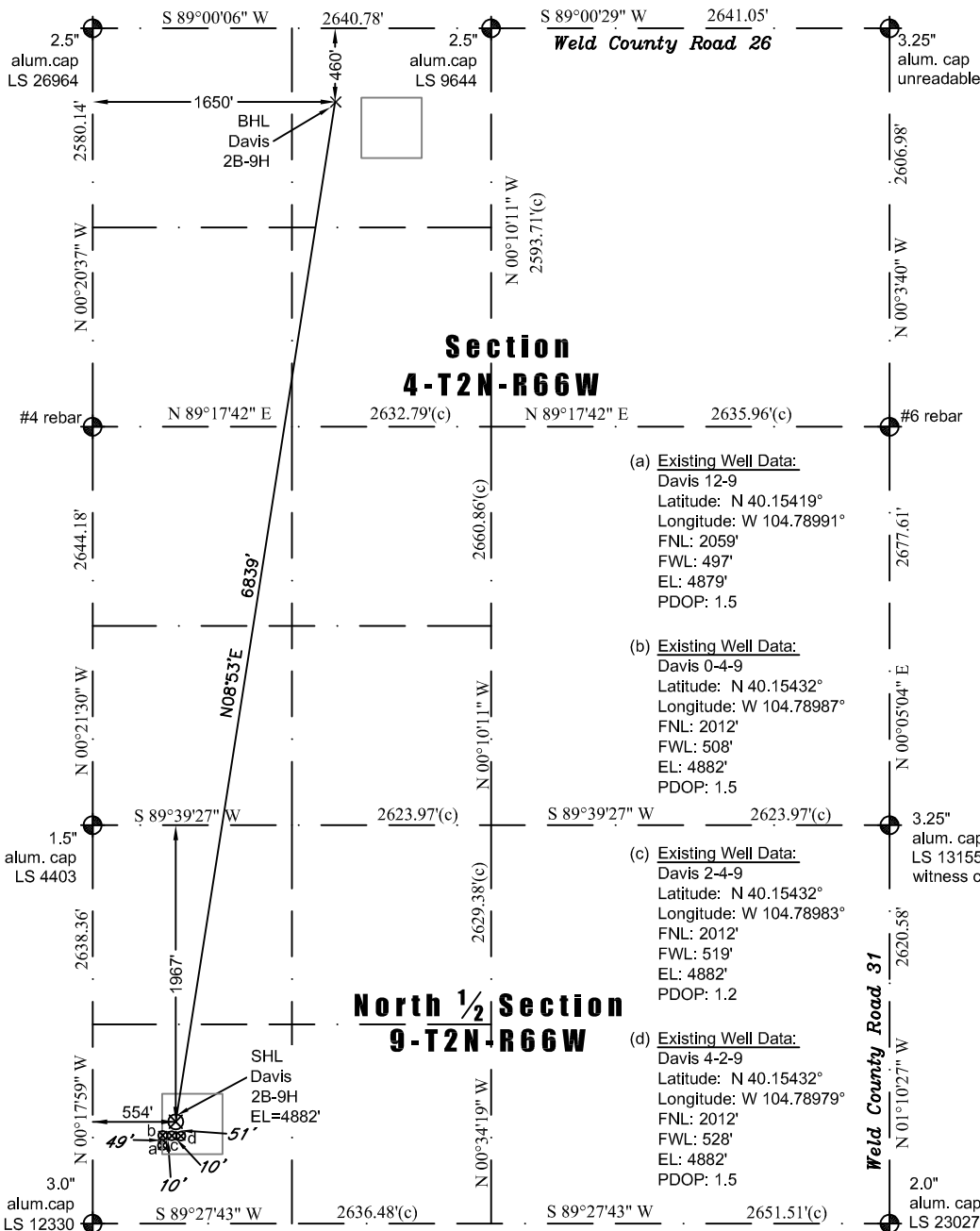


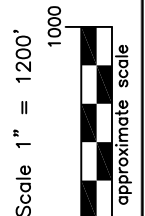
JR Land Surveying, LLC

8114 Northstar Drive
Windsor, Colorado 80528
P. 970-576-4641



WELL LOCATION CERTIFICATE

THIS MAP DOES NOT REPRESENT A BOUNDARY SURVEY



LEGEND
— found survey monument
— calculated dimension

In accordance with a request from Jennifer Lind of EnCana Oil & Gas (USA) Inc., JR Land Surveying, LLC has determined the location of the **Davis 2B-9H** well site to be SHL: 1967' FNL and 554' FWL, (BHL 460 FNL and 1650' FWL) as measured at ninety (90) degrees from the section lines of Section 9, & Section 4, Township 2 North, Range 66 West, 6th Principal Meridian, Weld County, CO.

Proposed Surface Hole Data:

Latitude: N 40.15444° (BHL 40.17297°)
Longitude: W 104.78970° (BHL 104.78573°)
PDOP: 1.6

Nearest:

Building 941' southeast
Public Road 3318' south
Property Line 554' west
Existing Well: Davis 4-2-9, 51' southwest

Above Ground Utility 653' south
Railroad 6195' west
Window Well: SHL is 96' inside

Notes:

- 1) Bearings and distances based on NAD 83 Colorado North State Plane Coordinates using RTK GPS observations taken 12/08/11 by operator Craig Burke.
- 2) Conversion factor to ground (1.000275398).
- 3) Elevations based on NAVD 88 GPS heights and Geoid 2003 corrections.
- 4) See Location Drawing for visible improvements within 400 feet.
- 5) The surface use is a cultivated field.

NOTICE: According to Colorado law you must commence any legal action based upon any defect in this W.L.C. within three years after you first discover such defect. In no event may any action based upon any defect in this W.L.C. be commenced more than ten years from this said date of the certification shown hereon.

I hereby certify that this Well Location Certificate was prepared by me or under my direct supervision on 4/23/2012 for and on behalf of EnCana Oil & Gas (USA) Inc. That it is not a Land Survey Plat or an Improvement Survey Plat and that it is not to be relied upon for establishment of fences, buildings, or other future improvement lines.

John Robert McGehee LS#38219
Well: Davis 2B-9H W.L.C.

